

Submit to Appropriate
District Office
State Lease - 4 copies
Fee Lease - 3 copies

State of New Mexico
Energy, Minerals and Natural Resources Department

Form C-102
Revised 1-1-89

OIL CONSERVATION DIVISION

DISTRICT I
P.O. Box 1980, Hobbs, NM 88240

P.O. Box 2088
Santa Fe, New Mexico 87504-2088

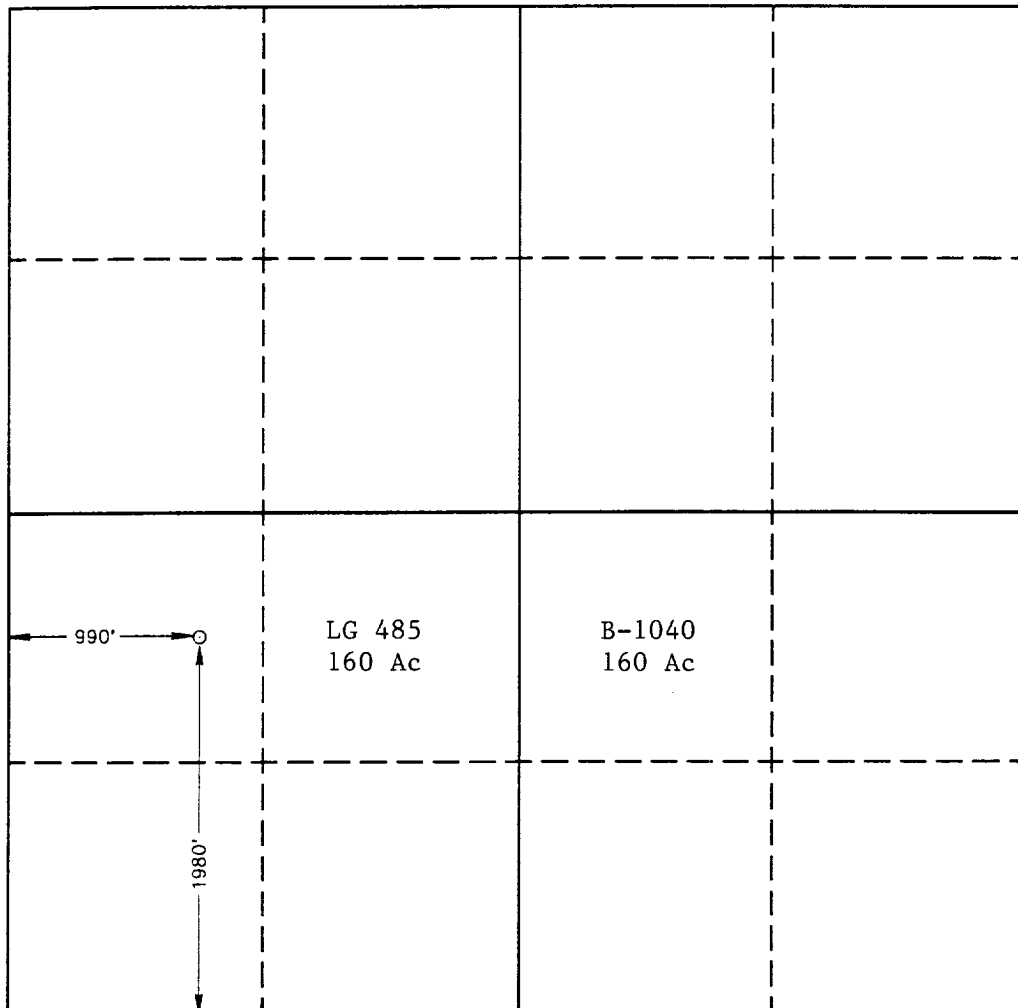
DISTRICT II
P.O. Drawer DD, Artesia, NM 88210

DISTRICT III
1000 Rio Brazos Rd., Aztec, NM 87410

WELL LOCATION AND ACREAGE DEDICATION PLAT

All Distances must be from the outer boundaries of the section

Operator BTA OIL PRODUCERS			Lease 8016 JV-P (STATE 2) (CM)		Well No. 2
Unit Letter L	Section 2	Township 23 SOUTH	Range 34 EAST	County LEA	
Actual Footage Location of Well: 1980 feet from the SOUTH line and 990 feet from the WEST line					
Ground Level Elev. 3382.4'	Producing Formation Atoka		Pool Antelope Ridge		Dedicated Acreage: 320 Acres
<p>1. Outline the acreage dedicated to the subject well by colored pencil or hachure marks on the plat below.</p> <p>2. If more than one lease is dedicated to the well, outline each and identify the ownership thereof (both as to working interest and royalty).</p> <p>3. If more than one lease of different ownership is dedicated to the well, have the interest of all owners been consolidated by communitization, unitization, force-pooling, etc.? <input checked="" type="checkbox"/> Yes <input type="checkbox"/> No If answer is "yes" type of consolidation <u>Communitization</u></p> <p>If answer is "no" list of owners and tract descriptions which have actually been consolidated. (Use reverse side of this form necessary.)</p> <p>No allowable will be assigned to the well unit all interests have been consolidated (by communitization, unitization, forced-pooling, otherwise) or until a non-standard unit, eliminating such interest, has been approved by the Division.</p>					



OPERATOR CERTIFICATION

I hereby certify the the information contained herein is true and complete to the best of my knowledge and belief.

Signature
Dorothy Houghton
Printed Name
Dorothy Houghton
Position
Regulatory Administrator
Company
BTA Oil Producers
Date
1-5-94

SURVEYOR CERTIFICATION

I hereby certify that the well location shown on this plat was plotted from field notes of actual surveys made by me or under my supervision, and that the same is true and correct to the best of my knowledge and belief.

Date Surveyed
SEPTEMBER 18, 1992
Signature & Seal of Professional Surveyor
Gary L. Jones
Certificate No. JOHN W. WEST, 676
RONALD J. EDSON, 3239
GARY L. JONES, 7977

92-41-1386