

OIL CONSERVATION DIVISION

P.O. Box 2088

Santa Fe, New Mexico 87504-2088

DISTRICT I

P.O. Box 1880, Hobbs, NM 88240

DISTRICT II

P.O. Drawer DD, Artesia, NM 88210

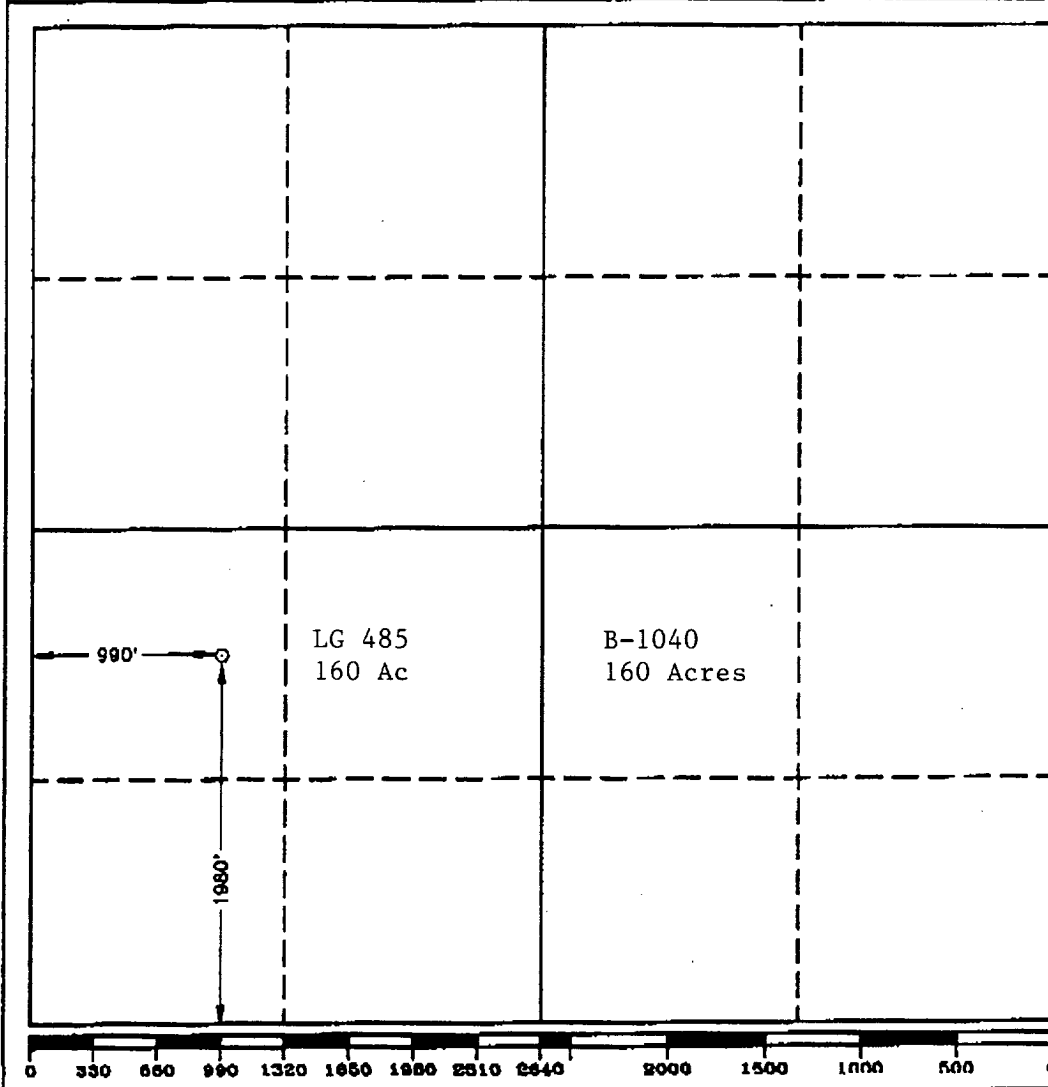
DISTRICT III

1000 Rio Brazos Rd., Artesia, NM 87410

WELL LOCATION AND ACREAGE DEDICATION PLAT

All Distances must be from the outer boundaries of the section

Operator BTA OIL PRODUCERS		Lease 8016 JV-P STATE 2 Com		Well No. 2
Unit Letter L	Section 2	Township 23 SOUTH	Range 34 EAST NMPM	County LEA
Actual Footage Location of Well: 1980 feet from the SOUTH line and 990 feet from the WEST line				
Ground Level Elev. 3382.4'	Producing Formation Morrow	Pool Antelope Ridge	Dedicated Acreage: 320 Acres	
<p>1. Outline the acreage dedicated to the subject well by colored pencil or hatchure marks on the plat below.</p> <p>2. If more than one lease is dedicated to the well, outline each and identify the ownership thereof (both as to working interest and royalty).</p> <p>3. If more than one lease of different ownership is dedicated to the well, have the interest of all owners been consolidated by communitization, unitization, force-pooling, etc.?</p> <p><input checked="" type="checkbox"/> Yes <input type="checkbox"/> No If answer is "yes" type of consolidation <u>Communitization</u></p> <p>If answer is "no" list of owners and tract descriptions which have actually been consolidated. (Use reverse side of this form necessary.)</p> <p>No allowable will be assigned to the well unit all interests have been consolidated (by communitization, unitization, forced-pooling, otherwise) or until a non-standard unit, eliminating such interest, has been approved by the Division.</p>				



OPERATOR CERTIFICATION	
I hereby certify the information contained herein is true and complete to the best of my knowledge and belief.	
Signature <i>Dorothy Houghton</i>	Printed Name Dorothy Houghton
Position Regulatory Administrator	
Company BTA Oil Producers	
Date 9-21-92	
SURVEYOR CERTIFICATION	
I hereby certify that the well location shown on this plat was plotted from field notes of actual surveys made by me or under my supervision, and that the same is true and correct to the best of my knowledge and belief.	
Date Surveyed SEPTEMBER 18, 1992	
Signature & Seal of Professional Surveyor <i>Gary L. Jones</i>	
Certificate No.	JOHN W. WEST. 878
	RONALD E. JONES. 3339
	GARY L. JONES. 7077