

APPLICATION FOR PERMIT TO DRILL, DEEPEN, OR PLUG BACK

5. LEASE DESIGNATION AND SERIAL NO.

NM-77062

6. IF INDIAN, ALLOTTEE OR TRIBE NAME

7. UNIT AGREEMENT NAME

8. FARM OR LEASE NAME

Amanda "AMN" Federal

9. WELL NO.

1

10. FIELD AND POOL, OR WILDCAT

Diamondtail Delaware

11. SEC., T., R., M., OR BLK.
AND SURVEY OR AREA

Sec. 11-T23S-R32E

12. COUNTY OR PARISH

Lea

13. STATE

NM

1A. TYPE OF WORK

DRILL ☒

DEEPEN ☐

PLUG BACK ☐

B. TYPE OF WELL

OIL
WELL ☒

GAS
WELL ☐

OTHER

SINGLE
ZONE ☐

MULTIPLE
ZONE ☐

2. NAME OF OPERATOR

Yates Petroleum Corporation

3. ADDRESS OF OPERATOR

105 South Fourth Street, Artesia, New Mexico 88210

4. LOCATION OF WELL (Report location clearly and in accordance with any State requirements.)*

At surface

2310' FNL and 1650' FWL

unit F

At proposed prod. zone

Same

14. DISTANCE IN MILES AND DIRECTION FROM NEAREST TOWN OR POST OFFICE*

41 miles Northwest of Jal, New Mexico

15. DISTANCE FROM PROPOSED*

LOCATION TO NEAREST
PROPERTY OR LEASE LINE, FT.
(Also to nearest drig. unit line, if any)

18. DISTANCE FROM PROPOSED LOCATION*
TO NEAREST WELL, DRILLING, COMPLETED,
OR APPLIED FOR, ON THIS LEASE, FT.

16. NO. OF ACRES IN LEASE

280

17. NO. OF ACRES ASSIGNED
TO THIS WELL

40

19. PROPOSED DEPTH

9000'

20. ROTARY OR CABLE TOOLS

Rotary

21. ELEVATIONS (Show whether DF, RT, GR, etc.)

3728' GR

22. APPROX. DATE WORK WILL START*

ASAP

23.

PROPOSED CASING AND CEMENTING PROGRAM

SIZE OF HOLE	SIZE OF CASING	WEIGHT PER FOOT	SETTING DEPTH	QUANTITY OF CEMENT
17 1/2"	13 3/8"	54.50# J-55	1200'	950 sacks CIRCULATE
11"	8 5/8"	32# J-55 & HC-80	4630'	1450 sacks (tie back)
7 7/8"	5 1/2"	15.5# J-55 & 17# J-55	TD	700 sacks (tie back)

Yates Petroleum Corporation proposes to drill and test the Delaware and intermediate formations. Approximately 1200' of surface casing will be set and cement circulated. Approximately 4630' of intermediate casing will be set and cement circulated. If commercial, production casing will be run and cemented with adequate cover, perforated and stimulated as needed for production.

MUD PROGRAM: FW/GEL to 1200'; Brine to 4630', cut Brine to TD

BOPE PROGRAM: BOPE will be installed on the 13 3/8" casing and tested daily for operational.

IN ABOVE SPACE DESCRIBE PROPOSED PROGRAM: If proposal is to deepen or plug back, give data on present productive zone and proposed new productive zone. If proposal is to drill or deepen directionally, give pertinent data on subsurface locations and measured and true vertical depths. Give blowout preventer program, if any.

24.

SIGNED

Cliff R. May

TITLE

Permit Agent

DATE 2/17/93

(This space for Federal or State office use)

PERMIT NO.

APPROVAL DATE

APPROVED BY

TITLE

AREA MANAGER

DATE

4/12/93

CONSENTS OF APPROVAL, IF ANY:

APPROVAL SUBJECT TO

GENERAL REQUIREMENTS AND

SPECIAL STIPULATIONS

ATTACHED

*See Instructions On Reverse Side

Submit to Appropriate
District Office
State Lease - 4 copies
Fee Lease - 3 copies

State of New Mexico
Energy, Minerals and Natural Resources Department

Form C-102
Revised 1-1-89

OIL CONSERVATION DIVISION

P.O. Box 2088
Santa Fe, New Mexico 87504-2088

DISTRICT I

P.O. Box 1980, Hobbs, NM 88240

DISTRICT II

P.O. Drawer DD, Artesia, NM 88210

DISTRICT III

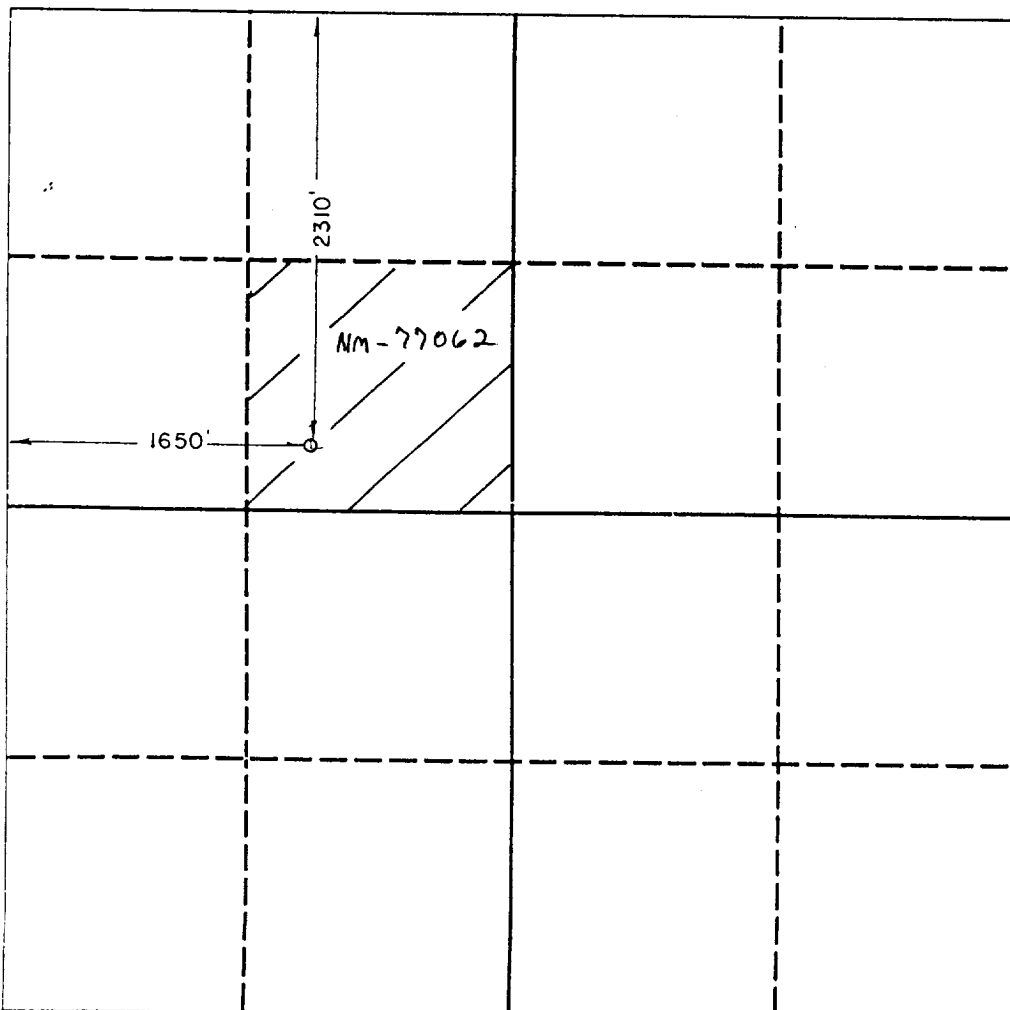
1000 Rio Brazos Rd., Aztec, NM 87410

WELL LOCATION AND ACREAGE DEDICATION PLAT

All Distances must be from the outer boundaries of the section

Operator YATES PETROLEUM CORPORATION			Lease AMANDA "AMN" FEDERAL		Well No. 1
Unit Letter F	Section 11	Township 23 SOUTH	Range 32 EAST	County NMPM LEA	
Actual Footage Location of Well: 2310 feet from the NORTH line and 1650 feet from the WEST line					
Ground level Elev. 3728	Producing Formation DELAWARE		Pool DIAMONDTAIL DELAWARE	Dedicated Acreage: 40 Acres	

1. Outline the acreage dedicated to the subject well by colored pencil or hatchure marks on the plat below.
2. If more than one lease is dedicated to the well, outline each and identify the ownership thereof (both as to working interest and royalty).
3. If more than one lease of different ownership is dedicated to the well, have the interest of all owners been consolidated by communitization, unitization, force-pooling, etc.?
☐ Yes ☐ No If answer is "yes" type of consolidation _____
If answer is "no" list the owners and tract descriptions which have actually been consolidated. (Use reverse side of this form if necessary.) _____
No allowable will be assigned to the well until all interests have been consolidated (by communitization, unitization, forced-pooling, or otherwise) or until a non-standard unit, eliminating such interest, has been approved by the Division.



OPERATOR CERTIFICATION

I hereby certify that the information contained herein is true and complete to the best of my knowledge and belief.

Signature

Clifton R. May

Printed Name

Clifton R. May

Position

Permit Agent

Company

Yates Petroleum

Date

2/10/93

SURVEYOR CERTIFICATION

I hereby certify that the well location shown on this plat was plotted from field notes of actual surveys made by me or under my supervision, and that the same is true and correct to the best of my knowledge and belief.

Date Surveyed

2/03/93

Signature & Seal of
Professional Surveyor

Handwritten Signature

Certificate No.

3640

0 330 660 990 1320 1650 1980 2310 2640 2000 1500 1000 500 0

YATES PETROLEUM CORPORATION
AMANDA AMN FED. #1
2310' FNL AND 1650' FWL
Sec. 11 T23S R32E
County LEA State NM

1. The estimated tops of geologic markers are as follows:

Rustler	1155'	Bone Spring	8720'
Bottom of Salt	4530'	TD	9000'
Bell Canyon	4800'		
Cherry Canyon	5780'		
Brushy Canyon	7590'		

2. The estimated depths at which anticipated water, oil or gas formations are expected to be encountered:

Water: 250-750
Oil or Gas: 7590' and 8720'

3. Pressure Control Equipment: BOPE will be installed on the 13 3/8" casing and rated for 3M BOP systems will be consistent with API RP 53. Pressure tests will be conducted before drilling out from under all casing strings which are set and cemented in place. Blowout preventor controls will be installed prior to drilling the surface plug and will remain in use until the well is completed or abandoned. Preventors will be inspected and operated at least daily to ensure good mechanical working order, and this inspection recorded on the daily drilling report. See Exhibit B.

Auxiliary Equipment:

- A. Auxiliary Equipment: Kelly cock, pit level indicators, and a sub with full opening valve to fit the drill pipe and collars will be available on the rig floor in the open position at all times for use when kelly is not in use.

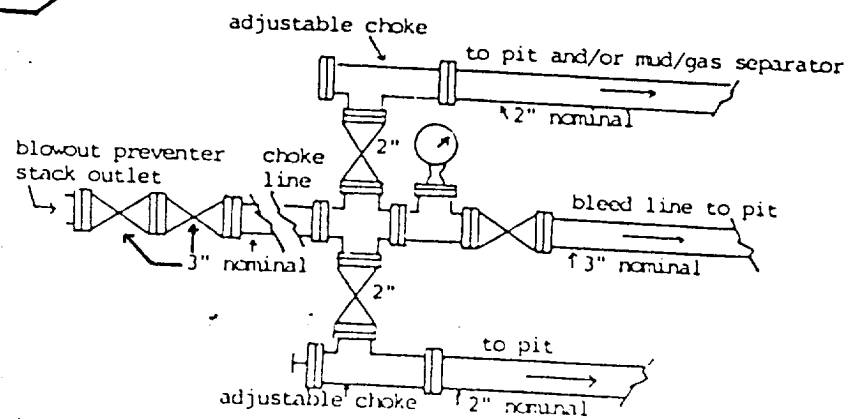
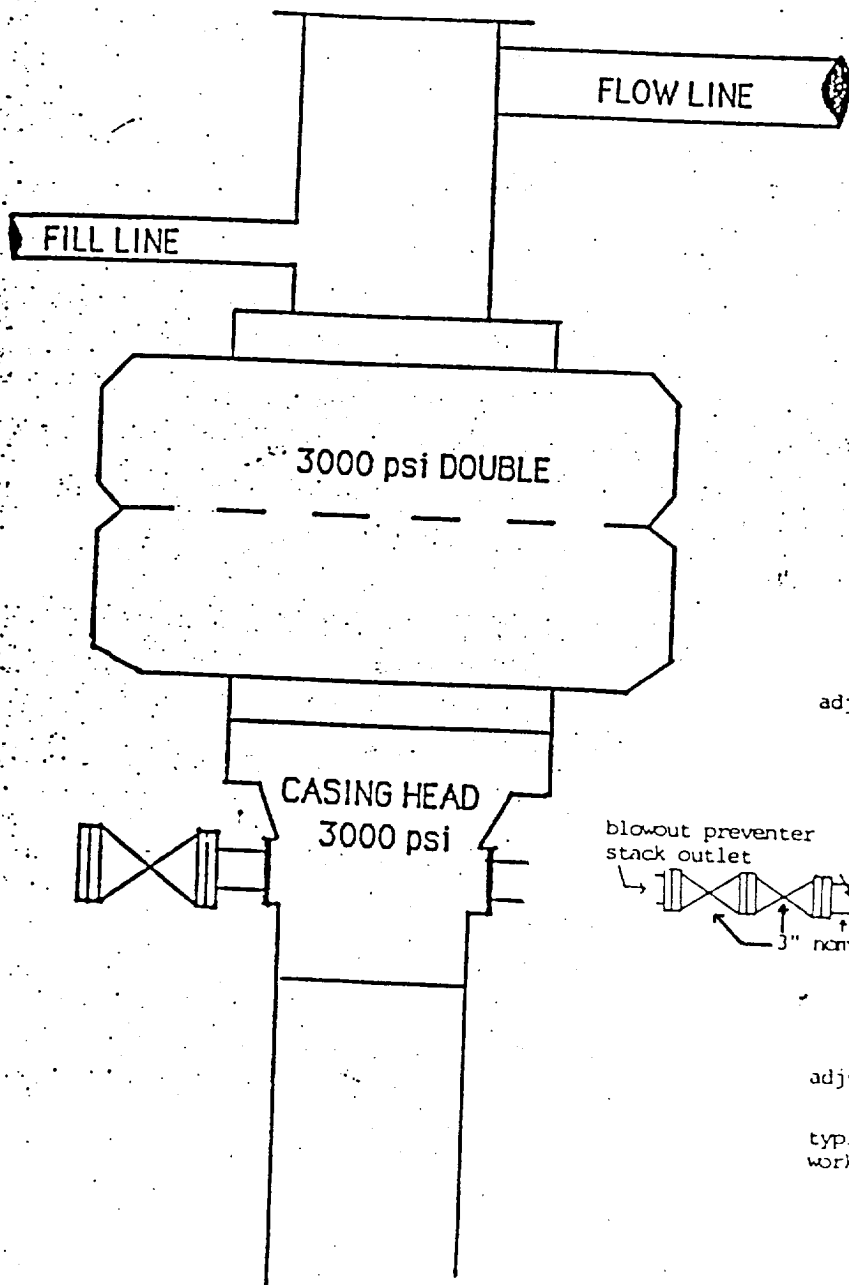
4. THE PROPOSED CASING AND CEMENTING PROGRAM:

- A. Casing Program: (All New)

<u>Hole Size</u>	<u>Casing Size</u>	<u>Wt./Ft</u>	<u>Grade</u>	<u>Thread</u>	<u>Coupling</u>	<u>Interval</u>	<u>Length</u>
17 1/2"	13 3/8	54.50	J55	8R	ST&C	0-1200	1200
11"	8 5/8	32	J55	8R	ST&C	0-4200	4200'
11"	8 5/8	32	HC-80	8R	LT&C	4200-4630	430'
7 7/8"	5 1/2	17#	J55	8R	LT&C	0-1500	1500'
7 7/8"	5 1/2	15.50#	J55	8R	LT&C	1500-6700	5200'
7 7/8"	5 1/2	17#	J55	8R	LT&C	6700-9000	2300'

Minimum Casing Design Factors: Collapse 1.125, Burst 1.0, Tensile Strength 1.80

YATES PETROLEUM CORPORATION



typical choke manifold assembly for 3M rated
working pressure service-surface installation

**BLOWOUT PREVENTER
3M SYSTEM**

Rec'd 6-23-93

ELF

RECEIVED

JUN 23 1993

U.S. AIR FORCE