

N. M. OIL CONS. COMMISSION
P. O. BOX 1990
HOBBS, NEW MEXICO 88240
DEPARTMENT OF THE INTERIOR
BUREAU OF LAND MANAGEMENT

CONTACT RECEIVING
OFFICE FOR 1 R
OF COPIES RETURNED
(Other instructions on
reverse side)

30-025-31968
BLM Roswell District
Modified Form No.
NM60-3160-2

APPLICATION FOR PERMIT TO DRILL, DEEPEN, OR PLUG BACK

1a. TYPE OF WORK DRILL <input checked="" type="checkbox"/> DEEPEN <input type="checkbox"/> PLUG BACK <input type="checkbox"/>		5. LEASE DESIGNATION AND SERIAL NO. NM-85939
b. TYPE OF WELL OIL WELL <input checked="" type="checkbox"/> GAS WELL <input type="checkbox"/> OTHER <input type="checkbox"/> SINGLE ZONE <input type="checkbox"/> MULTIPLE ZONE <input type="checkbox"/>		6. IF INDIAN, ALLOTTEE OR TRIBE NAME
2. NAME OF OPERATOR Strata Production Company		7. UNIT AGREEMENT NAME
3. ADDRESS OF OPERATOR P. O. Box 1030, Roswell, New Mexico 88202-1030		8. FARM OR LEASE NAME Colibri Federal
4. LOCATION OF WELL (Report location clearly and in accordance with any State requirements.)* At surface 990' FSL & 330' FEL Unit P		9. WELL NO. #1
14. DISTANCE IN MILES AND DIRECTION FROM NEAREST TOWN OR POST OFFICE* 43 miles east of Carlsbad, New Mexico		10. FIELD AND POOL, OR WILDCAT Diamondtail Delaware
15. DISTANCE FROM PROPOSED* LOCATION TO NEAREST PROPERTY OR LEASE LINE, FT. (Also to nearest drg. unit line, if any) 330'	16. NO. OF ACRES IN LEASE 640.00	11. SEC., T., R., M., OR BLK. AND SURVEY OR AREA Section 10-23S-32E
13. DISTANCE FROM PROPOSED LOCATION* TO NEAREST WELL, DRILLING, COMPLETED, OR APPLIED FOR, ON THIS LEASE, FT.	19. PROPOSED DEPTH 9000'	12. COUNTY OR PARISH Lea
21. ELEVATIONS (Show whether DF, RT, GR, etc.) 3715' GR		13. STATE NM
22. APPROX. DATE WORK WILL START* April 15, 1993		

PROPOSED CASING AND CEMENTING PROGRAM

HOLE SIZE	CASING SIZE	WEIGHT/FOOT	GRADE	THREAD TYPE	SETTING DEPTH	QUANTITY OF CEMENT
17 1/2"	13 3/8"	48#	H-40	8 RD ST&C	600'	Circ to surface
11"	8 5/8"	28# & 24#	J-55	8 RD ST&C	4700'	Tie back to surf csg
7 7/8"	5 1/2"	17#	J-55	8 RD LT&C	9000'	Tie back to 600'in intermediate csg

Strata Production Company proposes to drill to a depth sufficient to test the Delaware formation. If productive, 5 1/2" casing will be set. If non-productive, the well will be plugged and abandoned in a manner consistent with Federal Regulations. Specific programs as set out in Onshore Oil and Gas Order #1 are outlined in the following attachments:

Location and Elevation Plat
Hole Prognosis
Surface Use and Operating Plan
Exhibit "A" Equipment Description
Exhibit "B" Planned Access Roads
Exhibit "C" One Mile Radius Map
Exhibit "D" Drilling Rig Layout Plan

IN ABOVE SPACE DESCRIBE PROPOSED PROGRAM: If proposal is to deepen or plug back, give data on present productive zone and proposed new productive zone. If proposal is to drill or deepen directionally, give pertinent data on subsurface locations and measured and true vertical depths. Give blowout preventer program, if any.

24. SIGNED Carol J. Garcia TITLE Production Supervisor DATE 3/31/93

(This space for Federal or State office use)

PERMIT NO. _____ APPROVAL DATE _____

(ORIG. SGD.) RICHARD L. MANUS

AREA MANAGER

APPROVED BY _____ TITLE _____ DATE 4/30/93

GENERAL REQUIREMENTS AND
SPECIAL STIPULATIONS

ATTACHED

*See Instructions On Reverse Side

RECEIVED

MAY 04 1993

OCB HOBBS OFFICE

Submit to Appropriate
District Office
State Lease - 4 copies
Fee Lease - 3 copies

State of New Mexico
Energy, Minerals and Natural Resources Department

Form C-102
Revised 1-1-89

OIL CONSERVATION DIVISION

DISTRICT I
P.O. Box 1980, Hobbs, NM 88240

P.O. Box 2088
Santa Fe, New Mexico 87504-2088

DISTRICT II
P.O. Drawer DD, Artesia, NM 88210

DISTRICT III
1000 Rio Brazos Rd., Aztec, NM 87410

WELL LOCATION AND ACREAGE DEDICATION PLAT

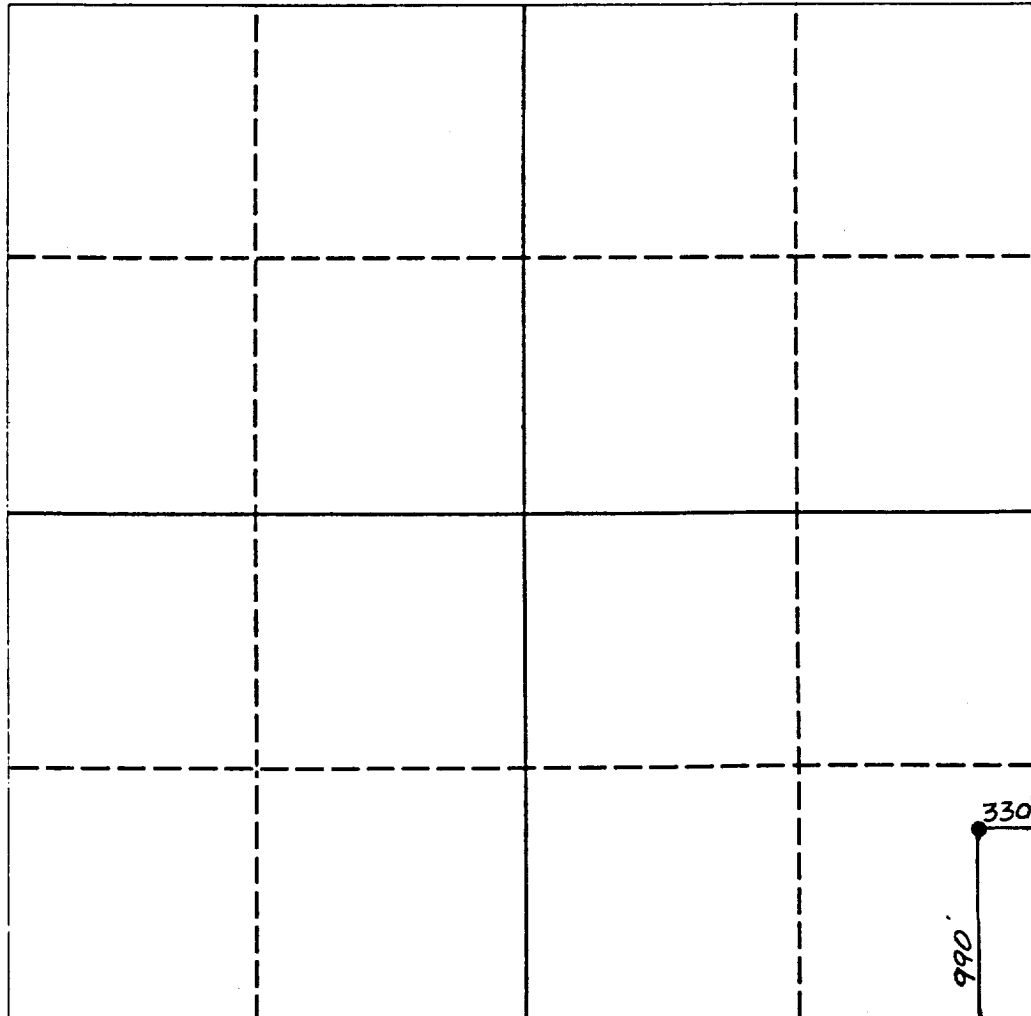
All Distances must be from the outer boundaries of the section

Operator STRATA PRODUCTION			Lease COLIBRI FEDERAL		Well No. 1
Unit Letter P	Section 10	Township 23 SOUTH	Range 32 EAST	County NMPM LEA COUNTY, NM	
Actual Footage Location of Well: 990 feet from the SOUTH line and 330 feet from the EAST line					
Ground level Elev. 3715.	Producing Formation Delaware		Pool Diamondtail Delaware	Dedicated Acreage: 40.00 Acres	

1. Outline the acreage dedicated to the subject well by colored pencil or hachure marks on the plat below.
2. If more than one lease is dedicated to the well, outline each and identify the ownership thereof (both as to working interest and royalty).
3. If more than one lease of different ownership is dedicated to the well, have the interest of all owners been consolidated by communitization, unitization, force-pooling, etc.?
☐ Yes ☒ No If answer is "yes" type of consolidation _____

If answer is "no" list the owners and tract descriptions which have actually been consolidated. (Use reverse side of this form if necessary.) _____

No allowable will be assigned to the well until all interests have been consolidated (by communitization, unitization, forced-pooling, or otherwise) or until a non-standard unit, eliminating such interest, has been approved by the Division.



0 330 660 990 1320 1650 1980 2310 2640 2000 1500 1000 500 0

OPERATOR CERTIFICATION

I hereby certify that the information contained herein is true and complete to the best of my knowledge and belief.

Signature
Carol J. Garcia
Printed Name
Carol J. Garcia
Position
Production Supervisor
Company
Strata Production Company
Date
March 31, 1993

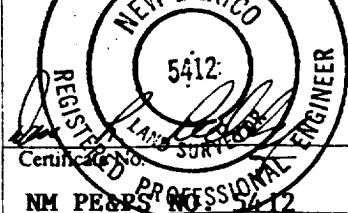
SURVEYOR CERTIFICATION

I hereby certify that the well location shown on this plat was plotted from field notes of actual surveys made by me or under my supervision, and that the same is true and correct to the best of my knowledge and belief.

Date Surveyed

FEBRUARY 18 1993

Signature & Seal of
Professional Surveyor



Certificate No.

NM PEERS 5412

HOLE PROGNOSIS
APPLICATION FOR PERMIT TO DRILL
STRATA PRODUCTION COMPANY
COLIBRI FEDERAL #1 WELL
990' FSL & 330' FEL
SECTION 10-23S-32E
LEA COUNTY, NM

In conjunction with form 3160-3, Application for Permit to Drill, Strata Production Company submits the following items in accordance with Onshore Oil and Gas Order Numbers 1 and 2, and all other applicable federal and state regulations.

1. Geologic Name of Surface Formation:

Permian

2. Estimated Tops of Geologic Markers:

Rustler	1200'	Lamar	4930'
Top of Salt	1300'	Bone Spring	8790'
Base of Salt	3525'	T.D.	9000'

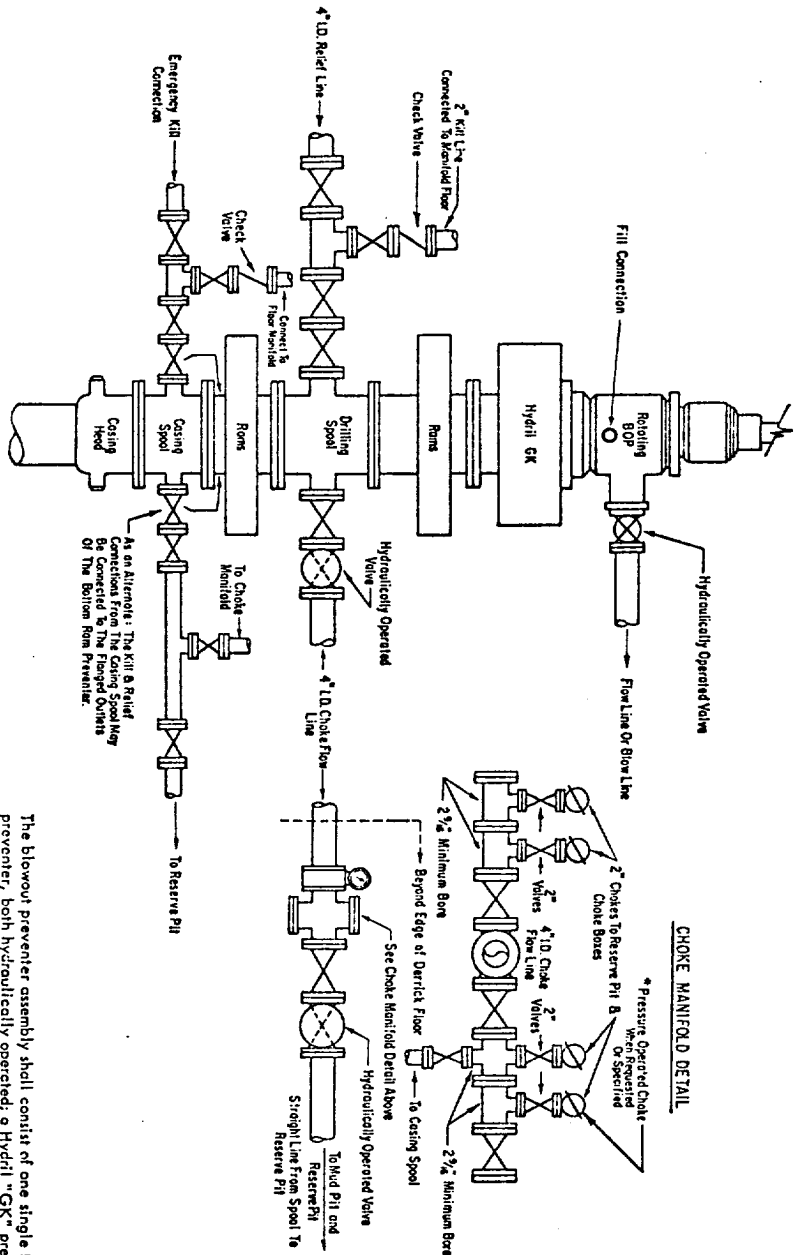
3. Estimated Depths of Anticipated Fresh Water, Oil or Gas:

Surface	150'	Fresh Water
Delaware	4930' - 8790'	Oil or Gas

No other formations are expected to produce oil, gas or fresh water in measurable quantities. The surface fresh water sands will be protected by setting 13 3/8" casing at 600' and circulating cement back to surface. Any shallower zones above TD which contain commercial quantities of oil and/or gas will have cement circulated across the zone by inserting a cementing stage tool into the 5 1/2" production casing which will be run at TD.

4. Casing Program:

<u>Hole Size</u>	<u>Interval</u>	<u>OD csq</u>	<u>Weight, Grade, Jt. Cond, Type</u>
17 1/2"	0-600'	13 3/8"	48#, H-40, ST&C, New
11"	0-4700'	8 5/8"	24# & 28#, J-55, ST&C, New
7 7/8"	0-TD	5 1/2"	17#, J-55, LT&C, New



3000 # PSI WORKING PRESSURE BLOWOUT PREVENTER HOOK-UP

hydraulic operating system which is to be a closed system. (2) Accumulators with a precharge of nitrogen of not less than 750 PSI and connected so as to receive the aforementioned fluid charge. With the charging pumps shut down, the pressurized fluid volume stored in the accumulators must be sufficient to close all the pressure-operated devices simultaneously within _____ seconds; after closure, the remaining accumulator pressure shall be not less than 1000 PSI with the remaining accumulator fluid volume of least _____ percent of the original. (3) When requested, an additional source of power, remote and equivalent, is to be available to operate the above pumps; or there shall be additional pumps operated by separate power and equal in performance capabilities.

The closing manifold and remote closing manifold shall have a separate control for each pressure-operated device. Controls are to be labeled, with control handles indicating open and closed positions. A pressure reducer and regulator must be provided for operating the Hydril® preventer. When requested, a second pressure reducer shall be available to limit operating fluid pressures to ram preventers. A Gulf Legion No. 38 hydraulic oil, an equivalent or better, is to be used as the fluid to operate the hydraulic equipment.

The choke manifold, choke flow line, relief line, and choke lines are to be supported by metal stands and adequately anchored. The choke flow line, relief line, and choke lines shall be constructed as straight as possible and without sharp bends. Easy and safe access is to be maintained to the choke manifold. If deemed necessary, walkways and stairways shall be erected in and around the choke manifold. All valves are to be selected for operation in the presence of oil, gas, and drilling fluids. The choke flow line valves and relief line valves connected to the drilling spool and all ram type preventers must be equipped with stem extensions, universal joints if needed, and hand wheels which are to extend beyond the edge of the derrick substructure. All other valves are to be equipped with handles.

* To include derrick floor mounted controls.