

Submit to Appropriate  
District Office  
State Lease - 6 copies  
Fee Lease - 5 copies

State of New Mexico  
Energy, Minerals and Natural Resources Department

Form C-101  
Revised 1-1-89

OIL CONSERVATION DIVISION

DISTRICT I  
P.O. Box 1980, Hobbs, NM 88240

DISTRICT II  
P.O. Drawer DD, Artesia, NM 88210

DISTRICT III  
1000 Rio Brazos Rd., Aztec, NM 87410

P.O. Box 2088  
Santa Fe, New Mexico 87504-2088

API NO. (assigned by OCD on New Wells)

30-025-32108

5. Indicate Type of Lease

STATE ☒

FEE ☐

6. State Oil & Gas Lease No.

VB-0286

APPLICATION FOR PERMIT TO DRILL, DEEPEN, OR PLUG BACK

1a. Type of Work:

DRILL ☒

RE-ENTER ☐

DEEPEN ☐

PLUG BACK ☐

b. Type of Well:

OIL  
WELL ☒

GAS  
WELL ☐

OTHER ☐

SINGLE  
ZONE ☐

MULTIPLE  
ZONE ☐

7. Lease Name or Unit Agreement Name

Saffron Unit

2. Name of Operator

Yates Petroleum Corporation

8. Well No.

1

3. Address of Operator

105 South Fourth Street, Artesia, New Mexico 88210

9. Pool name or Wildcat

Diamondtail Delaware

4. Well Location

Unit Letter G : 2310 Feet From The North Line and 1650 Feet From The East Line

Section 2

Township 23 South

Range 32 East

NMPM

Lea

County

10. Proposed Depth

9200'

11. Formation

Delaware

12. Rotary or C.T.

Rotary

13. Elevations (Show whether DF, RT, GR, etc.)

3739' GR

14. Kind & Status Plug Bond

Blanket

15. Drilling Contractor

Undesignated

16. Approx. Date Work will start

ASAP

17.

PROPOSED CASING AND CEMENT PROGRAM

SIZE OF HOLE	SIZE OF CASING	WEIGHT PER FOOT	SETTING DEPTH	SACKS OF CEMENT	EST. TOP
17 1/2"	13 3/8"	54.5# J-55	1200'	950 sacks	Circulate
11"	8 5/8"	32# J-55 & HC-80	4630'	1450 sacks	(Tie Back 100')
7 7/8"	5 1/2"	15.5# J-55 & 17# J-55	TD	700 sacks	(Tie Back 100')

Yates Petroleum Corporation proposes to drill and test the Delaware and intermediate formations. Approximately 1200' of surface casing will be set and cement circulated. Approximately 4630' of intermediate casing will be set and cement circulated. If commercial, production casing will be run and cemented with adequate cover, perforated and stimulated as needed for production.

MUD PROGRAM: FW/GEL to 1200'; Brine to 4630', cut Brine to TD.

BOPE PROGRAM: BOPE will be installed on the 13 3/8" casing and tested daily for operational.

IN ABOVE SPACE DESCRIBE PROPOSED PROGRAM: IF PROPOSAL IS TO DEEPEN OR PLUG BACK, GIVE DATA ON PRESENT PRODUCTIVE ZONE AND PROPOSED NEW PRODUCTIVE ZONE. GIVE BLOWOUT PREVENTER PROGRAM, IF ANY.

I hereby certify that the information above is true and complete to the best of my knowledge and belief.

SIGNATURE

Clifton R. May

TITLE

Permit Agent

DATE

7/8/93

TYPE OR PRINT NAME

Clifton R. May

TELEPHONE NO.

748-1471

(This space for State Use)

ORIGINAL SIGNED BY JERRY SEXTON

APPROVED BY

DISTRICT I SUPERVISOR

TITLE

DATE

JUL 12 1993

CONDITIONS OF APPROVAL, IF ANY:

Permit Expires 6 Months From Approval  
Date Unless Drilling Underway.

RECEIVED

JUL 17 1988

COMMUNICATIONS  
SECTION

Submit to Appropriate  
District Office  
State Lease - 4 copies  
Fee Lease - 3 copies

State of New Mexico  
Energy, Minerals and Natural Resources Department

Form C-102  
Revised 1-1-89

# OIL CONSERVATION DIVISION

DISTRICT I  
P.O. Box 1980, Hobbs, NM 88240

P.O. Box 2088

Santa Fe, New Mexico 87504-2088

DISTRICT II  
P.O. Drawer DD, Artesia, NM 88210

DISTRICT III  
1000 Rio Brazos Rd., Aztec, NM 87410

## WELL LOCATION AND ACREAGE DEDICATION PLAT

All Distances must be from the outer boundaries of the section

Operator <b>YATES PETROLEUM CORPORATION</b>			Lease <b>SAFFRON UNIT</b>		Well No. <b>1</b>
Unit Letter <b>G</b>	Section <b>2</b>	Township <b>23 SOUTH</b>	Range <b>32 EAST</b>	County <b>NMPM</b>	<b>LEA</b>
Actual Footage Location of Well: <b>2310</b> feet from the <b>NORTH</b> line and <b>1650</b> feet from the <b>EAST</b> line					
Ground level Elev. <b>3739</b>	Producing Formation <b>DELAWARE</b>		Pool <b>DIAMONDTAIL DELAWARE</b>		Dedicated Acreage: <b>40</b> Acres

- Outline the acreage dedicated to the subject well by colored pencil or hachure marks on the plat below.
- If more than one lease is dedicated to the well, outline each and identify the ownership thereof (both as to working interest and royalty).
- If more than one lease of different ownership is dedicated to the well, have the interest of all owners been consolidated by communitization, unitization, force-pooling, etc.?  
☐ Yes ☐ No If answer is "yes" type of consolidation \_\_\_\_\_  
If answer is "no" list the owners and tract descriptions which have actually been consolidated. (Use reverse side of this form if necessary.) \_\_\_\_\_  
No allowable will be assigned to the well until all interests have been consolidated (by communitization, unitization, forced-pooling, or otherwise) or until a non-standard unit, eliminating such interest, has been approved by the Division.

### OPERATOR CERTIFICATION

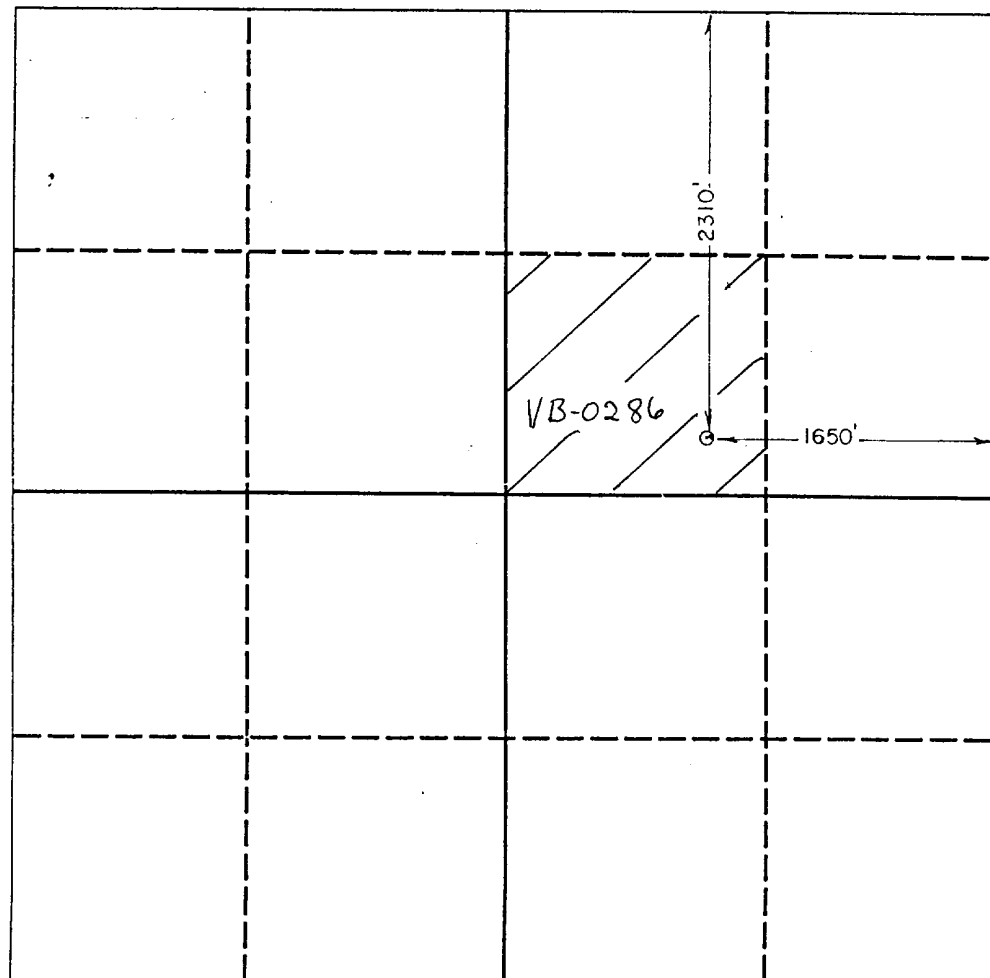
I hereby certify that the information contained herein is true and complete to the best of my knowledge and belief.

Signature Clifton R. May  
Printed Name **Clifton R. May**  
Position **Permit Agent**  
Company **Yates Petroleum Corporation**  
Date **7/8/93**

### SURVEYOR CERTIFICATION

I hereby certify that the well location shown on this plat was plotted from field notes of actual surveys made by me or under my supervision, and that the same is true and correct to the best of my knowledge and belief.

Date Surveyed **7/10/93**  
Signature Herschel L. Jones  
Professional Surveyor  
Certificate No. **3640**

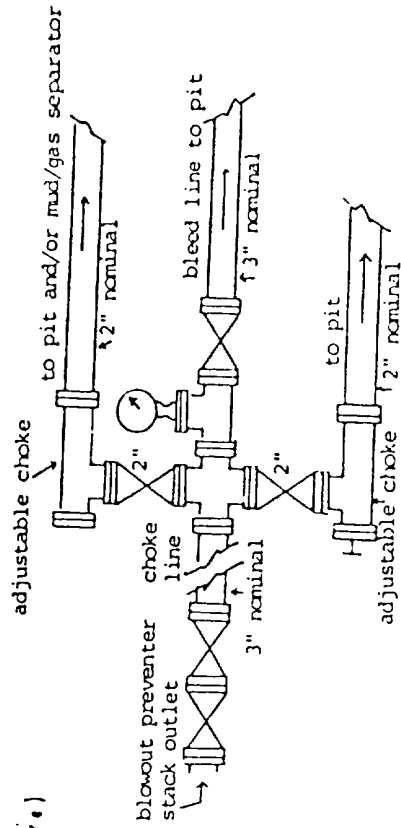
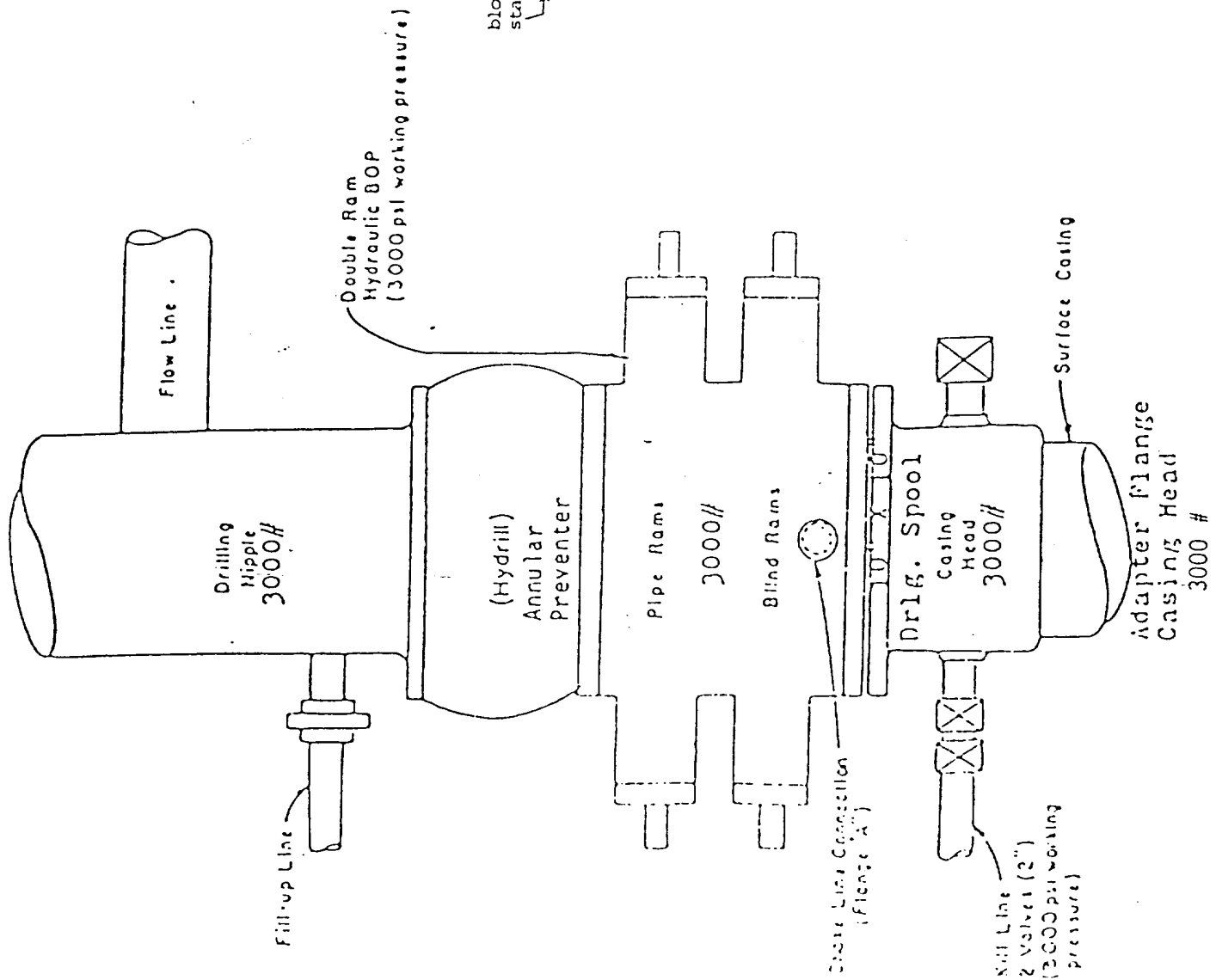


0 330 660 990 1320 1650 1980 2310 2640 2000 1500 1000 500 0

RECEIVED

JUL 13 1943

100 H-6-11  
100 H-6-11



typical choke manifold assembly for 3M rated working pressure service-surface installation

EXHIBIT "B"  
Blowout Preventer  
Diagram

111

RECEIVED

100-100000

100 percent  
100 percent