

**DISTRICT I**  
P. O. Box 1980  
Hobbs, NM 88240

**DISTRICT II**  
P. O. Drawer DD  
Artesia, NM 88210

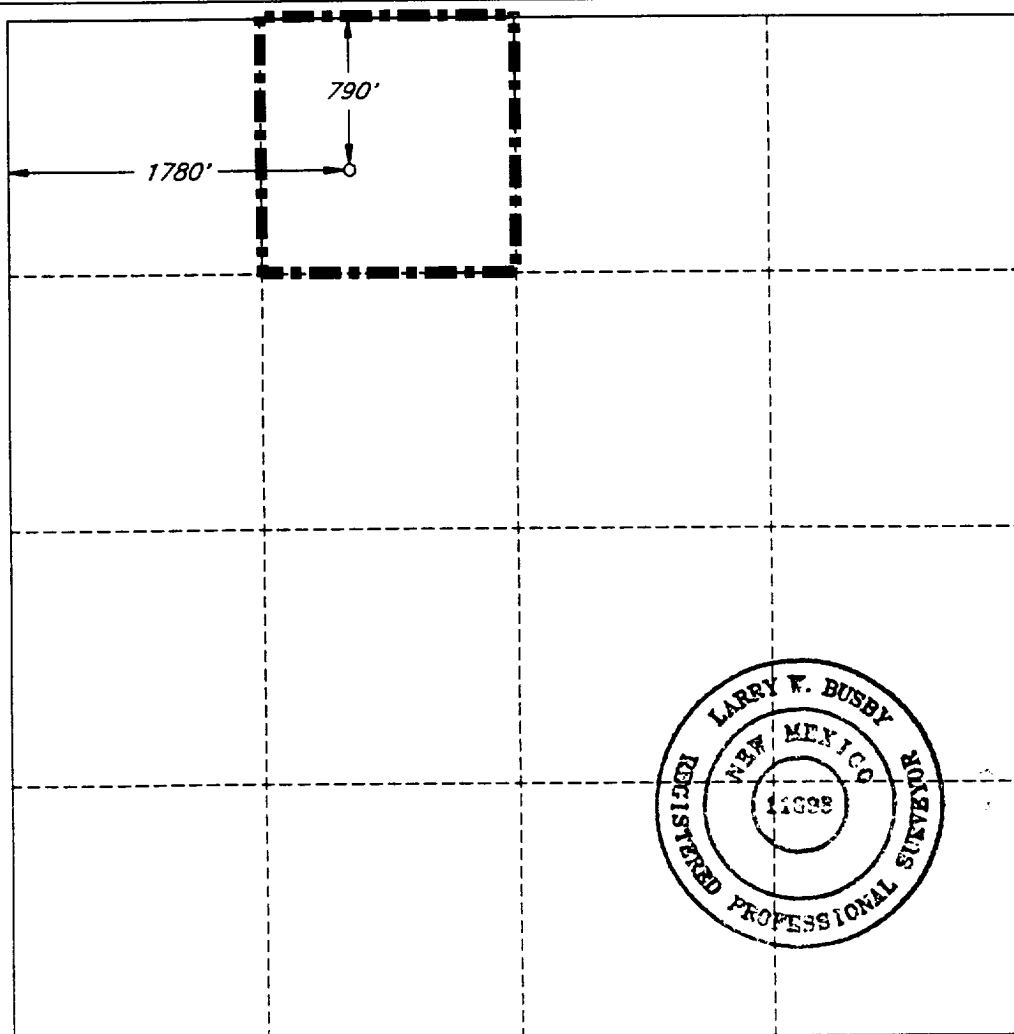
**DISTRICT III**  
1000 Rio Brazos Rd  
Aztec, NM 87410

**OIL CONSERVATION DIVISION**  
P. O. Box 2088  
Santa Fe, New Mexico 87504-2088

**WELL LOCATION AND ACREAGE DEDICATION PLAT**  
All distances must be from the outer boundaries of the section.

Operator <b>SANTA FE ENERGY OPER. PART, L.P.</b>		Lease <b>THISTLE UNIT '33' STATE</b>		Well No. <b>1</b>
Unit Letter <b>C</b>	Section <b>33</b>	Township <b>23 SOUTH</b>	Range <b>33 EAST, N.M.P.M.</b>	County <b>LEA</b>
Actual Footage Location of Well <b>790'</b> feet from the <b>NORTH</b> line and <b>1780'</b> feet from the <b>WEST</b> line				
Ground Level Elev. <b>3670'</b>	Producing Formation <b>Delaware</b>		Pool <b>Wildcat</b> <del>Undesignated</del> (Delaware)	<b>40</b> Acres

1. Outline the acreage dedicated to the subject well by colored pencil or hatchure marks on the plat below.
2. If more than one lease is dedicated to the well, outline each and identify the ownership thereof (both as to working interest and royalty).
3. If more than one lease of different ownership is dedicated to the well, have the interest of all the owners been consolidated by communitization, unitization, forced-pooling, etc.?  
☒ Yes ☐ No If answer is "yes", type of consolidation Unitization  
If the answer is "no", list the owners and tract descriptions which have actually been consolidated. (Use the reverse side of this form if necessary.)  
No allowable will be assigned to the well until all interests have been consolidated (by communitization, unitization, forced-pooling, or otherwise) or until a non-standard unit, eliminating such interest, has been approved by the division.



**OPERATOR CERTIFICATION**

I hereby certify that the information herein is true and complete to the best of my knowledge and belief.

Signature  
*Darrell Roberts*  
Printed Name  
**Darrell Roberts**  
Position  
**Sr. Drilling Engineer**  
Company  
**Santa Fe Energy Operating Partners, L.P.**  
Date  
**July 21, 1993**

**SURVEYOR CERTIFICATION**

I hereby certify that the well location shown on this plat was plotted from field notes of actual surveys made by me or under my supervision, and that the same is true and correct to the best of my knowledge and belief.

Date Surveyed  
**JUNE 30, 1993**  
Signature and Seal of Professional Surveyor  
*Larry F. Busby*  
Certificate No.  
**LARRY W. BUSBY R.P.S. #11398**  
**LWB / 97089 / 47SE**

1-11-77

# ADCM 01