

Submit to Appropriate
District Office
State Lease - 6 copies
Fee Lease - 5 copies

State of New Mexico
Energy, Minerals and Natural Resources Department

Form C-101
Revised 1-1-89

OIL CONSERVATION DIVISION

DISTRICT I
P.O. Box 1980, Hobbs, NM 88240

DISTRICT II
P.O. Drawer DD, Artesia, NM 88210

DISTRICT III
1000 Rio Brazos Rd., Aztec, NM 87410

P.O. Box 2088
Santa Fe, New Mexico 87504-2088

API NO. (assigned by OCD on New Wells)

30-025-32139

5. Indicate Type of Lease

STATE ☒

FEE ☐

6. State Oil & Gas Lease No.

V-2787

APPLICATION FOR PERMIT TO DRILL, DEEPEN, OR PLUG BACK

1a. Type of Work:

DRILL ☒

RE-ENTER ☐

DEEPEN ☐

PLUG BACK ☐

b. Type of Well:

OIL
WELL ☒

GAS
WELL ☐

OTHER ☐

SINGLE
ZONE ☐

MULTIPLE
ZONE ☐

7. Lease Name or Unit Agreement Name

Thistle Unit 33 State

2. Name of Operator

Santa Fe Energy Operating Partners, L.P.

8. Well No.

2

3. Address of Operator

550 W. Texas, Suite 1330, Midland, Texas 79701

9. Pool name or Wildcat
Undesignated (Delaware)

4. Well Location

Unit Letter E : 1980 Feet From The North Line and 990 Feet From The West Line

Section 33 Township 23S Range 33E NMPM Lea County

10. Proposed Depth

9200'

11. Formation

Delaware

12. Rotary or C.T.

Rotary

13. Elevations (Show whether DF, RT, GR, etc.)

3676' GR

14. Kind & Status Plug. Bond

Blanket - current

15. Drilling Contractor

To be determined

16. Approx. Date Work will start

August 15, 1993

17. PROPOSED CASING AND CEMENT PROGRAM

SIZE OF HOLE	SIZE OF CASING	WEIGHT PER FOOT	SETTING DEPTH	SACKS OF CEMENT	EST. TOP
17-1/2"	13-3/8"	48.0	600'	600 sx	Circ. - surf.
12-1/4"	8-5/8"	32.0	5100'	2500 sx	Surface
7-7/8"	5-1/2"	15.5 & 17.0	9200'	1500 sx	4800'

Move on location and rig up. Spud 17-1/2" hole and drill to $\pm 600'$. Run 13-3/8" casing and cement with sufficient Class "C" containing 2% CaCl_2 to circulate to surface. WOC 4 hours prior to cut-off and weld on 13-3/8" casing head and NU 13-3/8" annular preventer and choke manifold. Test casing to 600 psi and BOP stack to 1500 psi. Drill 12-1/4" hole to $\pm 5100'$. Run 8-5/8" casing and cement with sufficient 35/65/6 Class C Lite followed by Class C Neat to circulate. Drill 7-7/8" hole to 9200'. Run 5-1/2" casing and cement to 4800' with Class "C" cement with a stage collar at $\pm 6000'$.

An 11" x 3000 psi BOP stack will be nipped up on the 8-5/8" casing. It will consist of an annular double ram preventer and choke manifold - test casing to 1500 psi and test BOP stack to 3000 psi.

IN ABOVE SPACE DESCRIBE PROPOSED PROGRAM: IF PROPOSAL IS TO DEEPEN OR PLUG BACK, GIVE DATA ON PRESENT PRODUCTIVE ZONE AND PROPOSED NEW PRODUCTIVE ZONE. GIVE BLOWOUT PREVENTER PROGRAM, IF ANY.

I hereby certify that the information above is true and complete to the best of my knowledge and belief.

SIGNATURE Daniel Robato TITLE Sr. Drilling Engineer DATE July 21, 1993

TYPE OR PRINT NAME

TELEPHONE NO.

(This space for State Use)

Orig. Signed by
Paul Kautz
Geologist

APPROVED BY

TITLE

DATE

JUL 23 1993

CONDITIONS OF APPROVAL, IF ANY:

Permit Expires 6 Months From Approval
Date Unless Drilling Underway.

DISTRICT I

P. O. Box 1980
Hobbs, NM 88240

DISTRICT II

P. O. Drawer DD
Artesia, NM 88210

DISTRICT III

1000 Rio Brazos Rd
Aztec, NM 87410

OIL CONSERVATION DIVISION

P. O. Box 2088
Santa Fe, New Mexico 87504-2088

WELL LOCATION AND ACREAGE DEDICATION PLAT

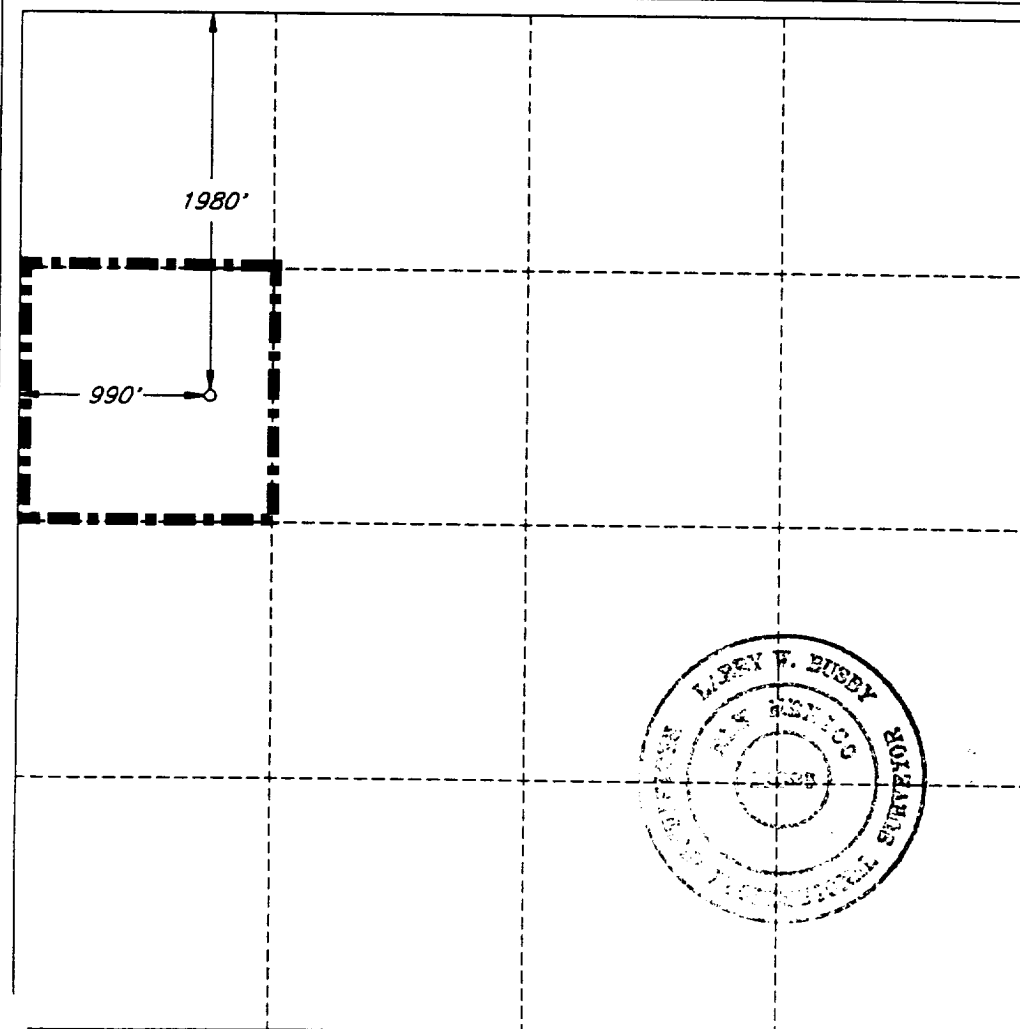
All distances must be from the outer boundaries of the section.

Operator SANTA FE ENERGY OPER. PART, L.P.			Lease THISTLE UNIT '33' STATE		Well No. 2
Unit Letter E	Section 33	Township 23 SOUTH	Range 33 EAST, N.M.P.M.	County LEA	

Actual Footage Location of Well

1980' feet from the NORTH line and		990' feet from the WEST line	
Ground Level Elev. 3676'	Producing Formation Delaware	Pool Wildcat Undesignated (Delaware)	Acres 40

1. Outline the acreage dedicated to the subject well by colored pencil or hachure marks on the plat below.
2. If more than one lease is dedicated to the well, outline each and identify the ownership thereof (both as to working interest and royalty).
3. If more than one lease of different ownership is dedicated to the well, have the interest of all the owners been consolidated by communitization, unitization, forced-pooling, etc.?
☒ Yes ☐ No If answer is "yes", type of consolidation Unitization
If the answer is "no", list the owners and tract descriptions which have actually been consolidated. (Use the reverse side of this form if necessary.)
No allowable will be assigned to the well until all interests have been consolidated (by communitization, unitization, forced-pooling, or otherwise) or until a non-standard unit, eliminating such interest, has been approved by the division.



OPERATOR CERTIFICATION

I hereby certify that the information herein is true and complete to the best of my knowledge and belief.

Signature
Darrell Roberts
Printed Name
Darrell Roberts
Position
Sr. Drilling Engineer
Company
Santa Fe Energy Operating Partners, L.P.
Date
July 21, 1993

SURVEYOR CERTIFICATION

I hereby certify that the well location shown on this plat was plotted from field notes of actual surveys made by me or under my supervision, and that the same is true and correct to the best of my knowledge and belief.

Date Surveyed
JUNE 30, 1993

Signature and Seal of
Professional Surveyor

Certificate No.
LARRY W. BUSBY R.P.S. #11398
LWB / 97220 / 47SE

330 660 990 1320 1650 1980 2310 2640 2000 1500 1000 500 0

RECEIVED

2014 JUN 10
10:11 AM