

Submit to Appropriate  
District Office  
State Lease - 6 copies  
Fee Lease - 5 copies

State of New Mexico  
Energy, Minerals and Natural Resources Department

Form C-101  
Revised 1-1-89

DISTRICT I  
P.O. Box 1980, Hobbs, NM 88240

DISTRICT II  
P.O. Drawer DD, Artesia, NM 88210

DISTRICT III  
1000 Rio Brazos Rd., Aztec, NM 87410

OIL CONSERVATION DIVISION  
P.O. Box 2088  
Santa Fe, New Mexico 87504-2088

API NO. (assigned by OCD on New Wells)

30 025-32179

5. Indicate Type of Lease

STATE ☐

FEE ☒

6. State Oil & Gas Lease No.

APPLICATION FOR PERMIT TO DRILL, DEEPEN, OR PLUG BACK

1a. Type of Work:

DRILL ☒

RE-ENTER ☐

DEEPEN ☐

PLUG BACK ☐

b. Type of Well:

OIL  
WELL ☐

GAS  
WELL ☒

OTHER

SINGLE  
ZONE ☒

MULTIPLE  
ZONE ☐

7. Lease Name or Unit Agreement Name

H. O. SIMS 'A'

2. Name of Operator

TEXACO EXPLORATION AND PRODUCTION INC.

8. Well No.

13154

3. Address of Operator

P. O. Box 3109, Midland, Texas 79702

9. Pool name or Wildcat

Wildcat  
UNDESIGNATED - BLINEBRY

4. Well Location

Unit Letter

N

: 990

Feet From The SOUTH

Line and 1980

Feet From The WEST

Line

Section

34

Township 22-SOUTH

Range 37-EAST

NMPM

LEA

County

10. Proposed Depth

5800'

11. Formation

BLINEBRY

12. Rotary or C.T.

ROTARY

13. Elevations (Show whether DF, RT, GR, etc.)

GR-3320'

14. Kind & Status Plug. Bond

BLANKET

15. Drilling Contractor

16. Approx. Date Work will start

SEPTEMBER 1, 1993

17.

PROPOSED CASING AND CEMENT PROGRAM

| SIZE OF HOLE | SIZE OF CASING | WEIGHT PER FOOT | SETTING DEPTH | SACKS OF CEMENT | EST. TOP |
|--------------|----------------|-----------------|---------------|-----------------|----------|
| 17 1/2       | 13 3/8         | 48#             | 40'           | REDI-MIX        | SURFACE  |
| 12 1/4       | 8 5/8          | 24#             | 1180'         | 650             | SURFACE  |
| 7 7/8        | 5 1/2          | 15.5# & 17#     | 5800'         | 1525            | SURFACE  |

CEMENTING PROGRAM: CONDUCTOR - READYMIX.

SURFACE CASING: 450 SACKS CLASS C w/ 4% GEL, 2% CaCl<sub>2</sub> (13.5ppg, 1.74cf/s, 9.1gw/s). F/B 200 SACKS CLASS C w/ 2% CaCl<sub>2</sub> (14.8ppg, 1.34cf/s, 6.3gw/s).

PRODUCTION CASING: 1st STAGE: 650 SACKS CLASS H (15.6ppg, 1.18cf/s, 5.2gw/s).

DV TOOL @ 3750': 2nd STAGE: 775 SACKS 35/65 POZ H w/ 6% GEL, 5% SALT, 1/4# FLOCELE (12.8ppg, 1.94cf/s, 10.4gw/s). F/B 100 SACKS CLASS H (15.6ppg, 1.18cf/s, 5.2gw/s).

THERE ARE NO OTHER OPERATORS IN THIS QUARTER QUARTER SECTION.

IN ABOVE SPACE DESCRIBE PROPOSED PROGRAM: IF PROPOSAL IS TO DEEPEN OR PLUG BACK, GIVE DATA ON PRESENT PRODUCTIVE ZONE AND PROPOSED NEW PRODUCTIVE ZONE. GIVE BLOWOUT PREVENTER PROGRAM, IF ANY.

I hereby certify that the information above is true and complete to the best of my knowledge and belief.

SIGNATURE C. P. Basham / c.m.H TITLE DRILLING OPERATIONS MANAGER DATE 08-11-93

TYPE OR PRINT NAME C. P. BASHAM

TELEPHONE NO. 915-688-4620

(This space for State Use)

Orig. Signed by  
Paul Kautz  
Geologist

APPROVED BY \_\_\_\_\_ TITLE \_\_\_\_\_ DATE AUG 16 1993

CONDITIONS OF APPROVAL, IF ANY:

Submit to Appropriate  
District Office  
State Lease - 4 copies  
Fee Lease - 3 copies

State of New Mexico  
Energy, Minerals and Natural Resources Department

Form C-102  
Revised 1-1-89

OIL CONSERVATION DIVISION

P.O. Box 2088  
Santa Fe, New Mexico 87504-2088

DISTRICT I  
P.O. Box 1980, Hobbs, NM 88240

DISTRICT II  
P.O. Drawer DD, Artesia, NM 88210

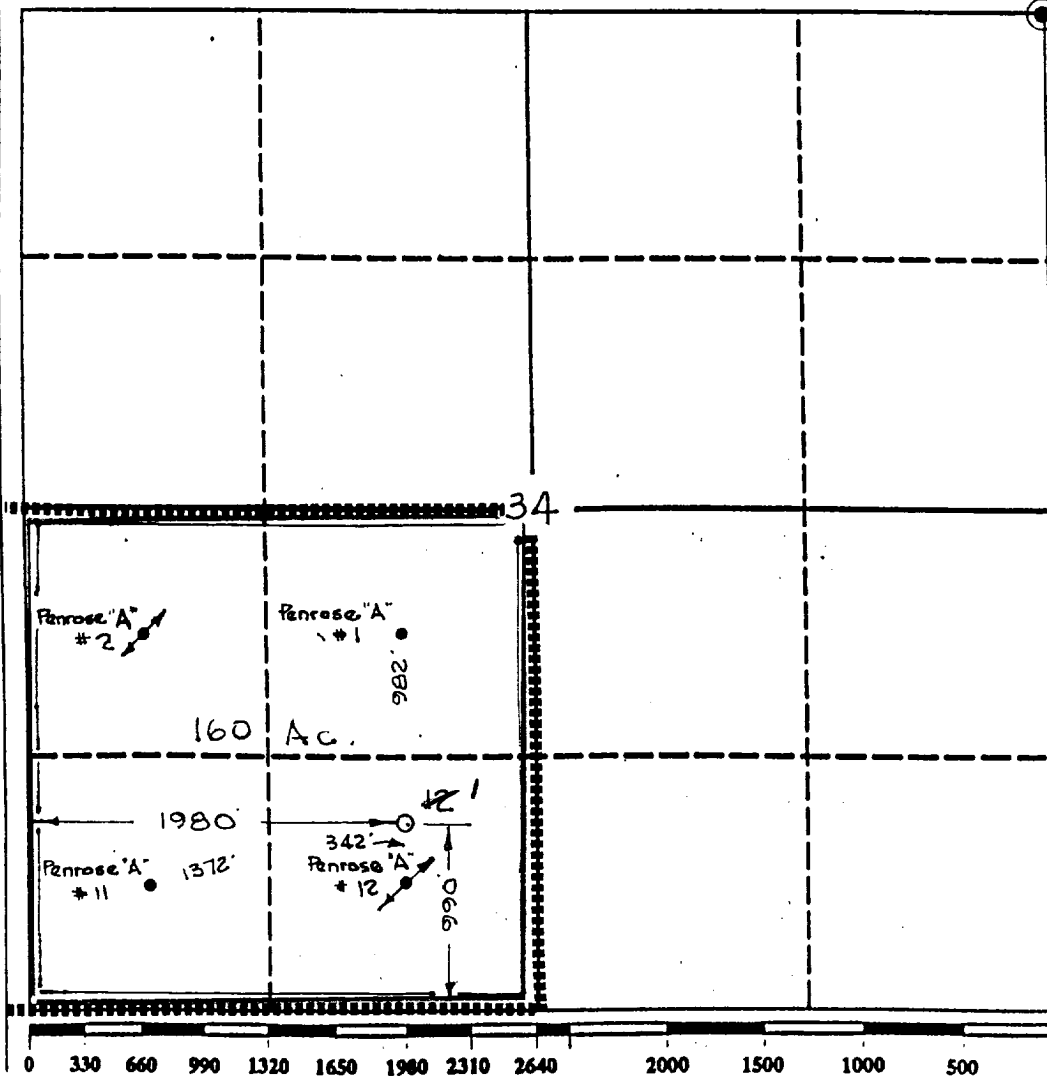
DISTRICT III  
1000 Rio Brazos Rd., Aztec, NM 87410

WELL LOCATION AND ACREAGE DEDICATION PLAT

All Distances must be from the outer boundaries of the section

|   |                                |                      |                                 |      |                 |
|---|--------------------------------|----------------------|---------------------------------|------|-----------------|
| Operator<br>TEXACO EXPLORATION AND PROD. Inc.   |                                |                      | Lease<br>H. O. Sims "A"         |      | Well No.<br>121 |
| Unit Letter<br>N  | Section<br>34                  | Township<br>22-South | Range<br>37-East                | NMPM | County<br>Lea   |
| Actual Footage Location of Well:<br>990 feet from the South line and 1980 feet from the West line |                                |                      |                                 |      |                 |
| Ground level Elev.<br>3320  | Producing Formation<br>Blinbry | Pool<br>Undesignated | Dedicated Acreage:<br>160 Acres |      |                 |

1. Outline the acreage dedicated to the subject well by colored pencil or hatchure marks on the plat below.
2. If more than one lease is dedicated to the well, outline each and identify the ownership thereof (both as to working interest and royalty).
3. If more than one lease of different ownership is dedicated to the well, have the interest of all owners been consolidated by communitization, unitization, force-pooling, etc?  
☐ Yes ☐ No If answer is "yes" type of consolidation \_\_\_\_\_  
If answer is "no" list the owners and tract descriptions which have actually been consolidated. (Use reverse side of this form if necessary.)  
No allowable will be assigned to the well until all interests have been consolidated (by communitization, unitization, forced-pooling, or otherwise) or until a non-standard unit, eliminating such interest, has been approved by the Division.



OPERATOR CERTIFICATION

I hereby certify that the information contained herein is true and complete to the best of my knowledge and belief.

Signature  
Royce D. Mariott /cwh  
Printed Name  
Royce D. Mariott  
Position  
Division Surveyor  
Company  
Texaco Expl. & Prod.  
Date  
August 10, 1993

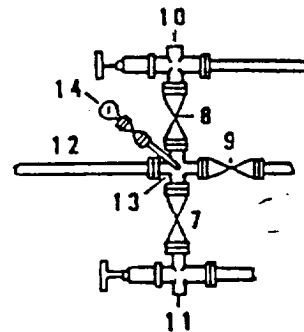
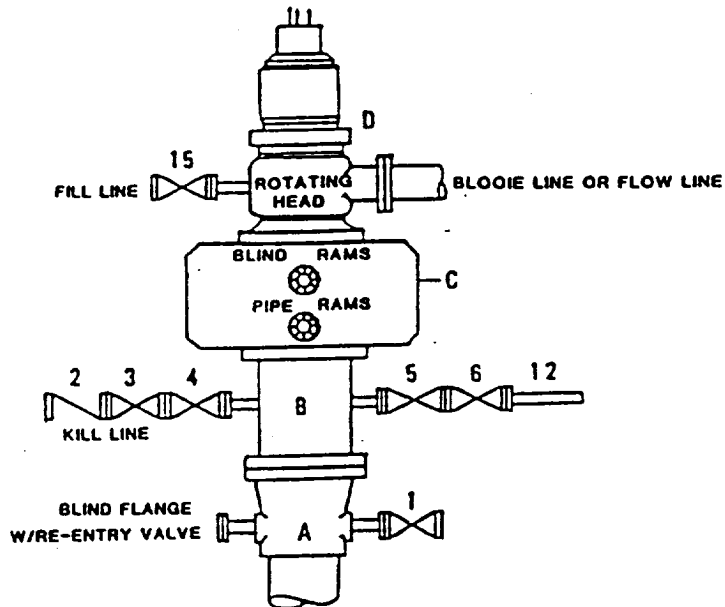
SURVEYOR CERTIFICATION

I hereby certify that the well location shown on this plat was plotted from field notes of actual surveys made by me or under my supervision, and that the same is true and correct to the best of my knowledge and belief.

Date Surveyed  
August 9, 1993  
Signature & Seal of  
Professional Surveyor  
John S. Piper  
Certificate No.  
7254 John S. Piper  
Lea Co. FB. 9, Pg. 36

**DRILLING CONTROL  
CONDITION II-B 3000 WP  
FOR AIR DRILLING OR  
WHERE NITROGEN OR AIR BLOWS ARE EXPECTED**

H<sub>2</sub>S TRIM REQUIRED  
YES ☒ NO ☐



**DRILLING CONTROL**

**MATERIAL LIST - CONDITION II - B**

- |                |   |
|----------------|---|
| A              | Texaco Wellhead   |
| B              | 3000# W.P. drilling spool with a 2" minimum flanged outlet for kill line and 3" minimum flanged outlet for choke line.  |
| C              | 3000# W.P. Dual ram type preventer, hydraulic operated with 1" steel, 3000# W.P. control lines (where sub-structure height is adequate, 2 - 3000# W.P. single ram type preventers may be utilized). |
| D              | Rotating Head with fill up outlet and extended Blooie Line.   |
| 1,3,4,<br>7,8, | 2" minimum 3000# W.P. flanged full opening steel gate valve, or Halliburton Lo Torc Plug valve.   |
| 2              | 2" minimum 3000# W.P. back pressure valve.  |
| 5,6,9          | 3" minimum 3000# W.P. flanged full opening steel gate valve, or Halliburton Lo Torc Plug valve.   |
| 12             | 3" minimum schedule 80, Grade "B", seamless line pipe.  |
| 13             | 2" minimum x 3" minimum 3000# W.P. flanged cross.   |
| 10,11          | 2" minimum 3000# W.P. adjustable choke bodies.  |
| 14             | Cameron Mud Gauge or equivalent ( location optional in choke line).   |
| 15             | 2" minimum 3000# W.P. flanged or threaded full opening steel gate valve, or Halliburton Lo Torc Plug valve.   |



TEXACO, INC.  
MIDLAND DIVISION  
MIDLAND, TEXAS



| SCALE       | DATE | EST. NO. | ORD. NO. |
|-------------|------|----------|----------|
| DRAWN BY    |      |          |          |
| CHECKED BY  |      |          |          |
| APPROVED BY |      |          |          |

EXHIBIT C