

DISTRICT I
P. O. Box 1980
Hobbs, NM 88240

DISTRICT II
P. O. Drawer DD
Artesia, NM 88210

DISTRICT III
1000 Rio Brazos Rd
Aztec, NM 87410

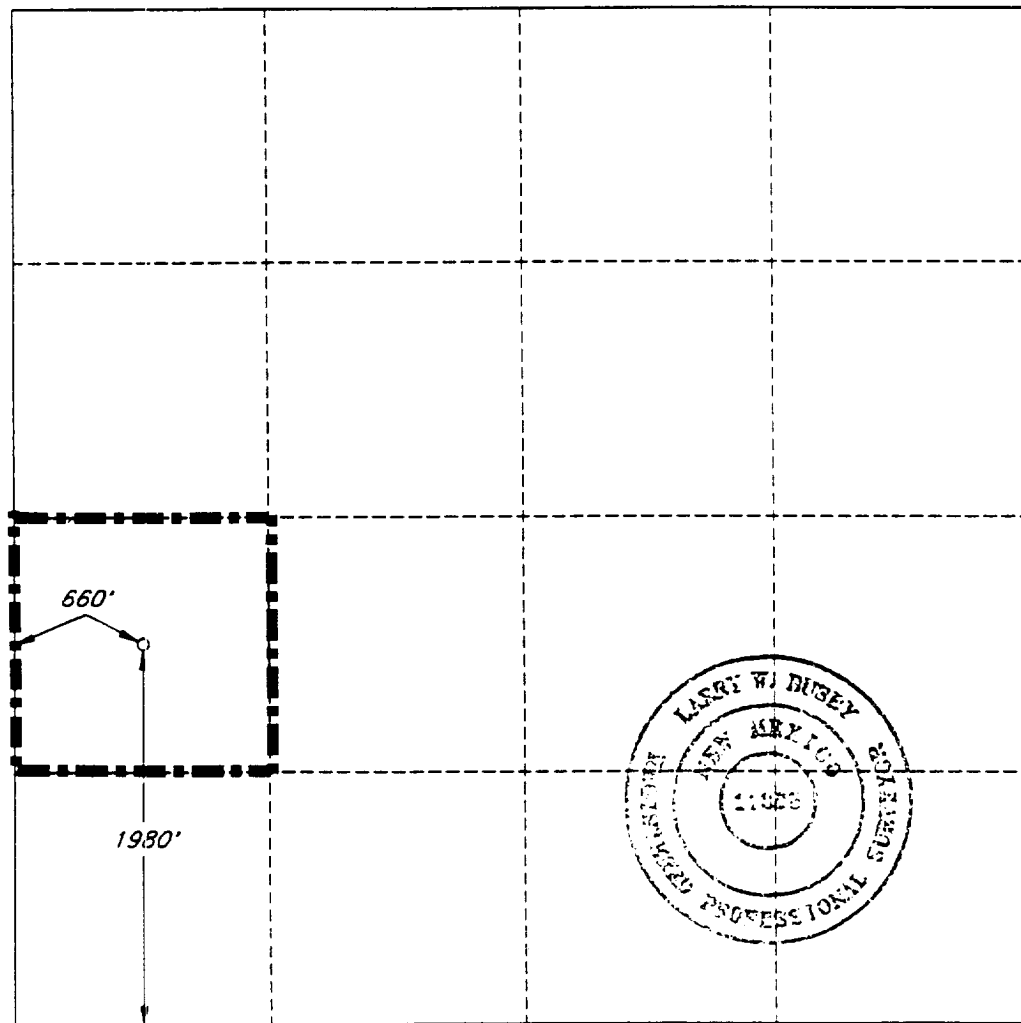
OIL CONSERVATION DIVISION
P. O. Box 2088
Santa Fe, New Mexico 87504-2088

WELL LOCATION AND ACREAGE DEDICATION PLAT

All distances must be from the outer boundaries of the section.

Operator SANTA FE ENERGY OPER. CO., L.P.		Lease THISTLE UNIT '28' FEDERAL		Well No. 1
Unit Letter L	Section 28	Township 23 SOUTH	Range 33 EAST, N.M.P.M.	County LEA
Actual Footage Location of Well				
1980' feet from the SOUTH line and		660' feet from the WEST line		
Ground Level Elev. 3674'	Producing Formation Delaware	Pool Wildcat (Delaware)	40 Acres	

- Outline the acreage dedicated to the subject well by colored pencil or hatchure marks on the plat below.
- If more than one lease is dedicated to the well, outline each and identify the ownership thereof (both as to working interest and royalty).
- If more than one lease of different ownership is dedicated to the well, have the interest of all the owners been consolidated by communitization, unitization, forced-pooling, etc.? ☒ Yes ☐ No If answer is "yes", type of consolidation Unitization
If the answer is "no", list the owners and tract descriptions which have actually been consolidated. (Use the reverse side of this form if necessary.)
No allowable will be assigned to the well until all interests have been consolidated (by communitization, unitization, forced-pooling, or otherwise) or until a non-standard unit, eliminating such interest, has been approved by the division.



OPERATOR CERTIFICATION

I hereby certify that the information herein is true and complete to the best of my knowledge and belief.

Signature

Darrell Roberts

Printed Name

Darrell Roberts

Position

Sr. Drilling Engineer

Company Santa Fe Energy

Operating Partners, L.P.

Date

July 21, 1993

SURVEYOR CERTIFICATION

I hereby certify that the well location shown on this plat was plotted from field notes of actual surveys made by me or under my supervision, and that the same is true and correct to the best of my knowledge and belief.

Date Surveyed

JULY 7, 1993

Signature and Seal of Professional Surveyor

Larry W. Busby

Certificate No.

LARRY W. BUSBY R.P.S. #11398

cls / 97221 / 47SE

RECEIVED

SEP 13 1993

OFFICE