

Submit to Appropriate  
District Office  
State Lease - 6 copies  
Fee Lease - 5 copies

State of New Mexico  
Energy, Minerals and Natural Resources Department

Form C-101  
Revised 1-1-89

OIL CONSERVATION DIVISION

P.O. Box 2088  
Santa Fe, New Mexico 87504-2088

DISTRICT I  
P.O. Box 1980, Hobbs, NM 88240

DISTRICT II  
P.O. Drawer DD, Artesia, NM 88210

DISTRICT III  
1000 Rio Brazos Rd., Aztec, NM 87410

API NO. (assigned by OCD on New Wells)

30-025-32334

5. Indicate Type of Lease

STATE ☒

FEE ☐

6. State Oil & Gas Lease No.

V-2795

APPLICATION FOR PERMIT TO DRILL, DEEPEN, OR PLUG BACK

1a. Type of Work:

DRILL ☒

RE-ENTER ☐

DEEPEN ☐

PLUG BACK ☐

b. Type of Well:

OIL  
WELL ☒

GAS  
WELL ☐

OTHER ☐

SINGLE  
ZONE ☐

MULTIPLE  
ZONE ☐

2. Name of Operator

Santa Fe Energy Operating Partners, L.P.

3. Address of Operator

550 W. Texas, Suite 1330, Midland, Texas 79701

4. Well Location

Unit Letter H : 1980 Feet From The North Line and 660 Feet From The East Line

Section 31

Township 23S

Range 33E

NMPM

Lea

County

10. Proposed Depth

9100'

11. Formation

Delaware

12. Rotary or C.T.

Rotary

13. Elevations (Show whether DF, RT, GR, etc.)

3680.5' GR

14. Kind & Status Plug. Bond

Blanket - current

15. Drilling Contractor

To be determined

16. Approx. Date Work will start

December 26, 1993

17.

PROPOSED CASING AND CEMENT PROGRAM

SIZE OF HOLE	SIZE OF CASING	WEIGHT PER FOOT	SETTING DEPTH	SACKS OF CEMENT	EST. TOP
17-7/2"	13-3/8"	48.0	600'	600 sx	Circ - surf.
12-1/4"	8-5/8"	32.0	5100'	2500 sx	Surface
7-7/8"	5-1/2"	15.5 & 17.0	9100'	1500 sx	4800'

Move on location and rig up. Spud 17-1/2" hole and drill to  $\pm 600'$ . Run 13-3/8" casing and cement with sufficient Class "C" containing 2%  $\text{CaCl}_2$  to circulate to surface. WOC 4 hours prior to cut-off and weld on 13-3/8" casing head and NU 13-3/8" annular preventer and choke manifold. Test casing to 600 psi and BOP stack to 1500 psi. Drill 12-1/4" hole to  $\pm 5100'$ . Run 8-5/8" casing and cement with sufficient 35/65/6 Class "C" Lite followed by Class "C" Neat to circulate. Drill 7-7/8" hole to 9100'. Run 5-1/2" casing and cement to 4800' with Class "C" cement with a stage collar at  $\pm 6000'$ .

An 11" x 3000 psi BOP stack will be nipped up on the 8-5/8" casing. It will consist of an annular double ram preventer and choke manifold - test casing to 1500 psi and test BOP stack to 3000 psi.

IN ABOVE SPACE DESCRIBE PROPOSED PROGRAM: IF PROPOSAL IS TO DEEPEN OR PLUG BACK, GIVE DATA ON PRESENT PRODUCTIVE ZONE AND PROPOSED NEW PRODUCTIVE ZONE. GIVE BLOWOUT PREVENTER PROGRAM, IF ANY.

I hereby certify that the information above is true and complete to the best of my knowledge and belief.

SIGNATURE Darrell Roberts TITLE Sr. Drilling Engineer DATE Dec. 6, 1993

TYPE OR PRINT NAME Darrell Roberts TELEPHONE NO. 915/ 687-3551

(This space for State Use)

Orig. Signed by  
Paul Kautz  
Geologist

APPROVED BY \_\_\_\_\_ TITLE \_\_\_\_\_ DATE DEC 08 1993

CONDITIONS OF APPROVAL, IF ANY:

Submit to Appropriate  
District Office  
State Lease - 4 copies  
Fee Lease - 3 copies

State of New Mexico  
Energy, Minerals and Natural Resources Department

Form C-102  
Revised 1-1-89

OIL CONSERVATION DIVISION

DISTRICT I  
P.O. Box 1980, Hobbs, NM 88240

P.O. Box 2088

Santa Fe, New Mexico 87504-2088

DISTRICT II  
P.O. Drawer DD, Artesia, NM 88210

DISTRICT III  
1000 Rio Brazos Rd., Aztec, NM 87410

WELL LOCATION AND ACREAGE DEDICATION PLAT

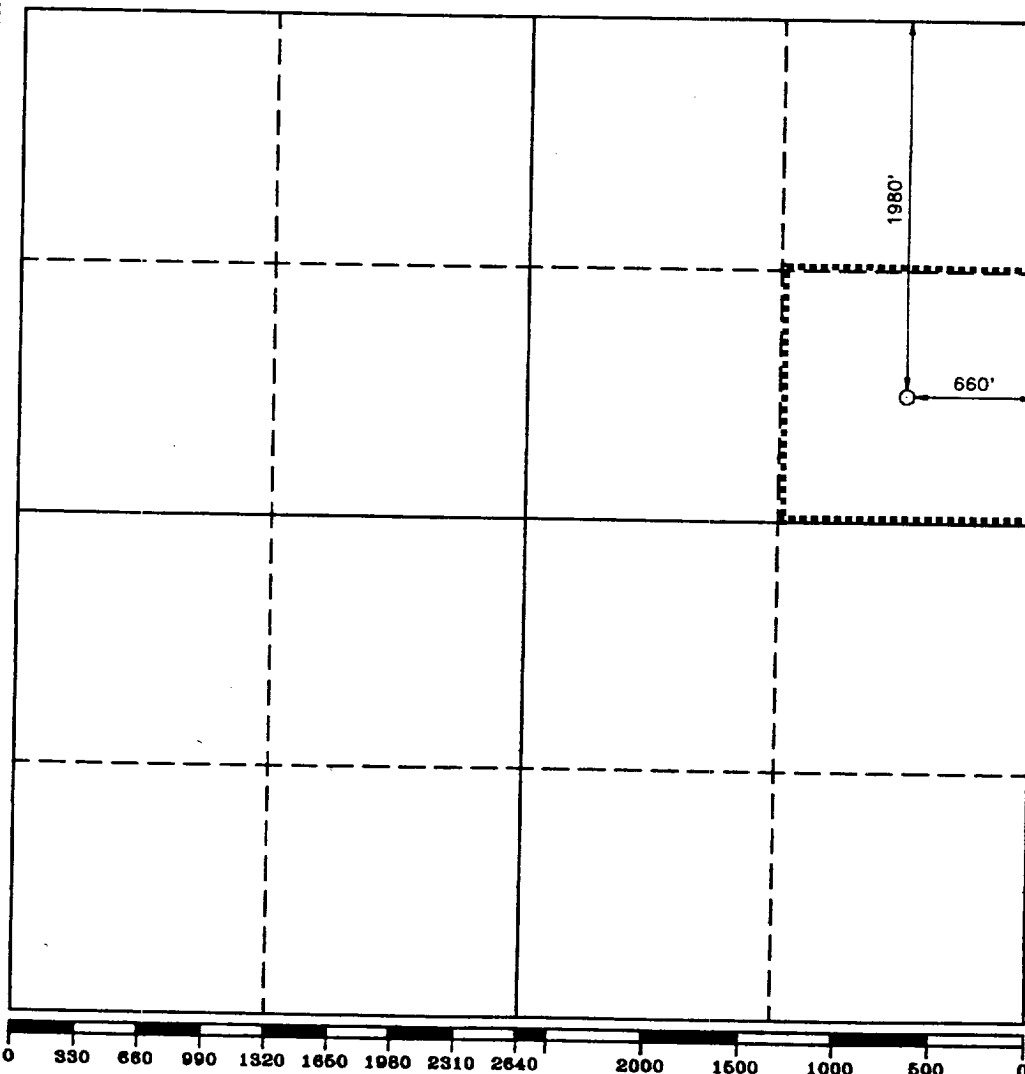
All Distances must be from the outer boundaries of the section

Operator Santa Fe Energy Operating Partners, L.P.		Lease SNAKEWEED 31 STATE		Well No. 1
Unit Letter H	Section 31	Township 23 SOUTH	Range 33 EAST NMPM	County LEA
Actual Footage Location of Well: 1980 feet from the NORTH line and 660' feet from the EAST line				
Ground Level Elev. 3680.5'	Producing Formation Delaware	Pool <i>Wildcat</i> <del>Undesignated Delaware</del>	Dedicated Acreage: 40 Acres	

- Outline the acreage dedicated to the subject well by colored pencil or hatchure marks on the plat below.
- If more than one lease is dedicated to the well, outline each and identify the ownership thereof (both as to working interest and royalty).
- If more than one lease of different ownership is dedicated to the well, have the interest of all owners been consolidated by communitization, unitization, force-pooling, etc.?  
☐ Yes ☐ No If answer is "yes" type of consolidation \_\_\_\_\_

If answer is "no" list of owners and tract descriptions which have actually been consolidated. (Use reverse side of this form necessary.)

No allowable will be assigned to the well unit all interests have been consolidated (by communitization, unitization, forced-pooling, otherwise) or until a non-standard unit, eliminating such interest, has been approved by the Division.



OPERATOR CERTIFICATION

I hereby certify the the information contained herein is true and complete to the best of my knowledge and belief.

Signature

*Darrell Roberts*

Printed Name

Darrell Roberts

Position

Sr. Drilling Engineer

Company Santa Fe Energy Operating Partners, L.P.

Date

December 6, 1993

SURVEYOR CERTIFICATION

I hereby certify that the well location shown on this plat was plotted from field notes of actual surveys made by me or under my supervision, and that the same is true and correct to the best of my knowledge and belief.

Date Surveyed

NOVEMBER 15, 1993

Signature & Seal of Professional Surveyor

GARY L. JONES  
NEW MEXICO  
7977  
Certificate No. 878  
JOHN W. WEST  
RONALD A. BROWN  
PROFESSIONAL SURVEYOR  
8299  
7977

93-11-2268