

APPLICATION FOR PERMIT TO DRILL, DEEPEN, OR PLUG BACK

1A. TYPE OF WORK

DRILL ☒

DEEPEN ☐

PLUG BACK ☐

B. TYPE OF WELL

OIL
WELL ☒

GAS
WELL ☐

OTHER

SINGLE
ZONE ☒

MULTIPLE
ZONE ☐

2. NAME OF OPERATOR

J.C. Williamson

3. ADDRESS OF OPERATOR

P.O. Box 16 Midland, Texas 79702

4. LOCATION OF WELL (Report location clearly and in accordance with any State requirements.)*

At surface

1980' FNL & 1650' FEL

At proposed prod. zone same

14. DISTANCE IN MILES AND DIRECTION FROM NEAREST TOWN OR POST OFFICE*

26 miles West of Jal, New Mexico

15. DISTANCE FROM PROPOSED*

LOCATION TO NEAREST
PROPERTY OR LEASE LINE, FT.
(Also to nearest drlg. unit line, if any)

1650'

16. NO. OF ACRES IN LEASE

360

18. DISTANCE FROM PROPOSED LOCATION*
TO NEAREST WELL, DRILLING, COMPLETED,
OR APPLIED FOR, ON THIS LEASE, FT.

1100'

19. PROPOSED DEPTH

7600'

21. ELEVATIONS (Show whether DF, RT, GR, etc.)

3377.0' GR

23.

PROPOSED CASING AND CEMENTING PROGRAM

SIZE OF HOLE	SIZE OF CASING	WEIGHT PER FOOT	SETTING DEPTH	QUANTITY OF CEMENT
17-1/2"	13-3/8"	48# & 65#	650'	750 sx Class "C" CIRCULATE
12-1/4"	10-3/4"	32.75# & 40.5#	2400'	450 sx Class "C" (tie back)
9-1/2"	8-5/8"	32# (OD liner)	4950'	450 sx Class "C" (circ. liner)
7-7/8"	5-1/2"	14# & 17.0#	7600'	492 sx Class "H" (tie back)

OPER. GRID NO. 011158

PROPERTY NO. 011812

POOL CODE 02210

EFF. DATE 5-5-94

API NO. 3D-025-32508

IN ABOVE SPACE DESCRIBE PROPOSED PROGRAM: If proposal is to deepen or plug back, give data on present productive zone and proposed new productive zone. If proposal is to drill or deepen directionally, give pertinent data on subsurface locations and measured and true vertical depths. Give blowout preventer program, if any.

24.

SIGNED

TITLE

Prod./Drlg.

DATE 03-01-94

(This space for Federal or State office use)

PERMIT NO.

APPROVAL DATE

APPROVED BY

TITLE

AREA MANAGER

CONDITIONS OF APPROVAL, IF ANY:

APPROVAL SUBJECT TO
GENERAL REQUIREMENTS AND
SPECIAL STIPULATIONS
ATTACHED

APPROVAL OF THIS APPLICATION DOES NOT WARRANT
OR CERTIFY THAT THE APPLICANT HOLDS LEGAL OR
EQUITABLE TITLE TO THOSE RIGHTS IN THE SUBJECT
LEASE WHICH WOULD ENTITLE THE APPLICANT TO
CONDUCT OPERATIONS THEREON

Title 18 U.S.C. Section 1001 makes it a crime for any person knowingly and willfully to make to any department or agency of the

See Instructions On Reverse Side

RECEIVED

MAY 6 1952

**W. J. HUBBS
OFFICE**

Submit to Appropriate
District Office
State Lease - 4 copies
Fee Lease - 3 copies

State of New Mexico
Energy, Minerals and Natural Resources Department

Form C-102
Revised 1-1-89

DISTRICT I

P.O. Box 1980, Hobbs, NM 88240

DISTRICT II

P.O. Drawer DD, Artesia, NM 88210

DISTRICT III

1000 Rio Brazos Rd., Aztec, NM 87410

OIL CONSERVATION DIVISION

P.O. Box 2088

Santa Fe, New Mexico 87504-2088

WELL LOCATION AND ACREAGE DEDICATION PLAT

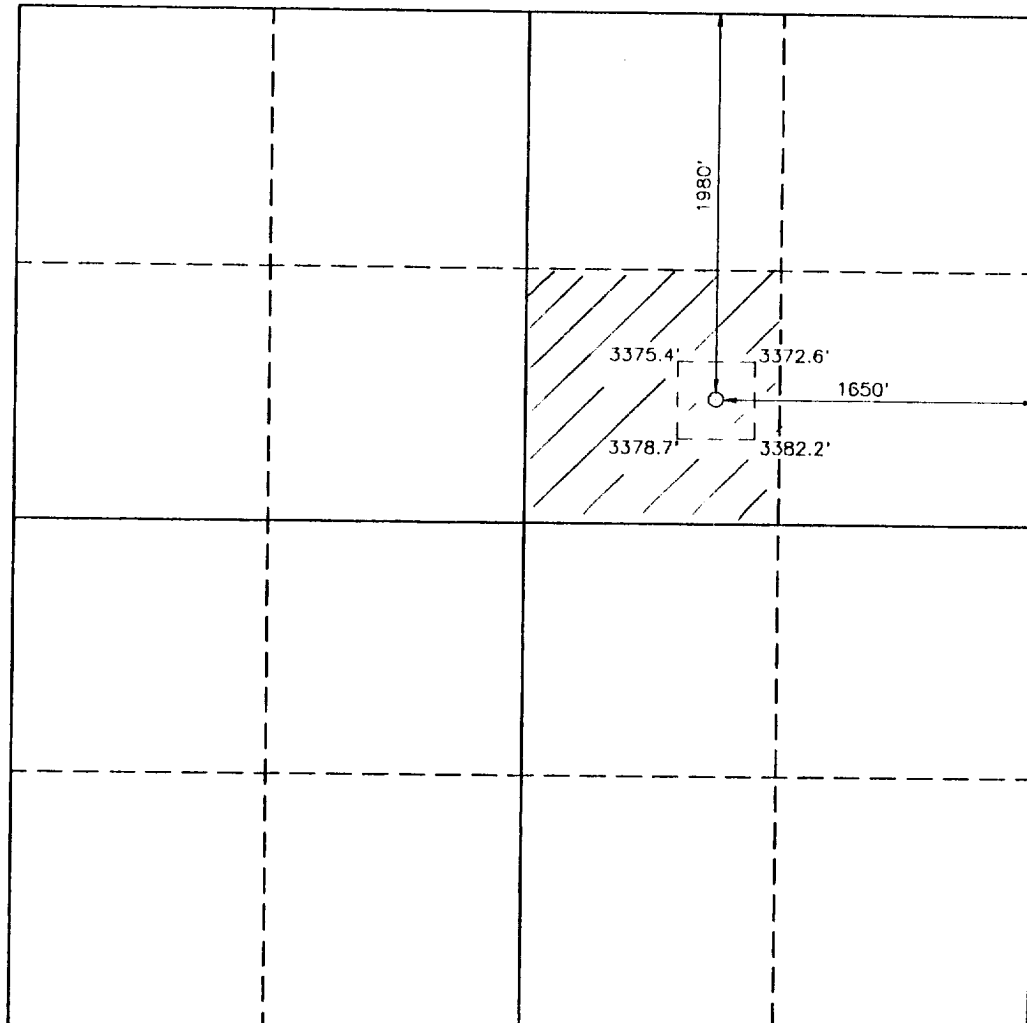
All Distances must be from the outer boundaries of the section

Operator J. C. WILLIAMSON			Lease TRIPLE A FEDERAL		Well No. 3
Unit Letter G	Section 10	Township 23 SOUTH	Range 34 EAST	County LEA	
Actual Footage Location of Well: 1980 feet from the NORTH line and 1650 feet from the EAST line					
Ground Level Elev. 3377.0'	Producing Formation Delaware		Pool Antelope Ridge (Cherry Canyon)		Dedicated Acreage: 40 Acres

1. Outline the acreage dedicated to the subject well by colored pencil or hachure marks on the plat below.
2. If more than one lease is dedicated to the well, outline each and identify the ownership thereof (both as to working interest and royalty).
3. If more than one lease of different ownership is dedicated to the well, have the interest of all owners been consolidated by communitization, unitization, force-pooling, etc.?
☐ Yes ☐ No If answer is "yes" type of consolidation N/A

If answer is "no" list of owners and tract descriptions which have actually been consolidated. (Use reverse side of this form necessary. N/A)

No allowable will be assigned to the well unit all interests have been consolidated (by communitization, unitization, forced-pooling, otherwise) or until a non-standard unit, eliminating such interest, has been approved by the Division.



OPERATOR CERTIFICATION

I hereby certify the the information contained herein is true and complete to the best of my knowledge and belief.

Signature Jan Pfister
Printed Name
Jan Pfister
Position
Production
Company
J.C. Williamson
Date
03-01-94

SURVEYOR CERTIFICATION

I hereby certify that the well location shown on this plat was plotted from field notes of actual surveys made by me or under my supervision, and that the same is true and correct to the best of my knowledge and belief.

Date Surveyed
DECEMBER 8, 1993

Signature & Seal of
Professional Surveyor

Certificate No. JOHN V. WESS 676
RONALD J. EDEN 3239
7977

93-11-2498

0 330 660 990 1320 1650 1980 2310 2640 2000 1500 1000 500 0

RECEIVED

MAY 11 1994

**U.S. DEPT. OF JUSTICE
OFFICE**

SUPPLEMENTAL DRILLING DATA

J.C. WILLIAMSON
TRIPLE "A" FED. #3 WELL

1. SURFACE FORMATION: Quaternary

2. ESTIMATED TOPS OF GEOLOGIC MARKERS:

Tansill-Yates	4,000'
Delaware	5,000'
Cherry Canyon	6,600'
Brushy Canyon	7,300'

3. ANTICIPATED POSSIBLE HYDROCARBON BEARING ZONES:

Delaware sand series 4,000'-7,300'

4. PROPOSED CASING AND CEMENTING PROGRAM:

Casing program is shown on Form 3160-3, (also see Exhibit "E")

The Cellar floor will be cemented around the top of the conductor pipe.

SURFACE CASING will consist of 48.0#/ft, H-40, ST&C casing to be set at 650' and cemented with Class "C", 4% gel, 1/4#/sack Flocele, 2% CaCl₂ and will circulate to surface, this is 100 percent excess for the volume calculated.

INTERMEDIATE CASING will consist of a 10-3/4" OD casing set from 2400' to the surface and will be cemented with 133 percent of volume of salt saturated Class "C" cement w/flocele. This should bring the cement back to the surface and will case off an unconsolidated sand having a base of 2,300' in the area. The 10-3/4" OD casing will be drilled out and a 9-1/2" hole will be made to 4,950' where an 8-3/4" OD liner will be set at that depth and hung at a depth 300' inside the base of the 10-3/4" string. The 8-3/4" OD liner will be cemented with sufficient cement to circulate above the top of the liner.

PRODUCTION CASING will be run to total depth and cemented in two stages, with the first stage of 200 sacks Class "C" utilizing 2% gel to prevent brittleness and the second stage of sufficient volume to bring the top of the cement above the 8-5/8" csg shoe. This program will permit cement to be behind casing from total depth to the surface.

ALL CEMENT VOLUMES WILL BE MEASURED USING A FLUID CALIPER FLOW METER. CEMENT ADDITIVES WILL VARY AS DETERMINED BY DRILLING CONDITIONS AT THE TIME CASING IS RUN.

5. PRESSURE CONTROL EQUIPMENT:

BOP equipment will consist of a minimum of a 3000# double ram preventer, both blind and pipe rams, and choke manifold if required.

6. CIRCULATING MEDIUM:

CONDUCTOR STRING: An air drilling machine will be used to set the 60' of conductor casing.

RECEIVED

MAY 11 1964

**RECORDS
OFFICE**

60' to 800', SURFACE CASING: A light fresh water mud with gel and ground paper, as needed, to control water-loss. Maintain water loss between 8.5 and 9.0, The viscosity will be maintained between 35 and 45 seconds.

800' to 5000', INTERMEDIATE CASING: Cut brine and saturated brine as determined by amount of salt-encountered. Use of hole-sweeps will be used to keep the hole clean. Intermediate casing will be set in solid anhydrite of lime if little salt is encountered.

5000' to TOTAL DEPTH, PRODUCTION CASING: A fresh water light polymer gel will be used from the base of the the 8-5/8" csg. The weight will be as light as practical by using centrifuges and de-sanders to keep the mud as clean as possible. All precautions will be made to eliminate surges in the mud system to keep the formations from breaking down and taking large volumes of drilling fluid.

7. AUXILARY EQUIPMENT:

Upper Kelly Cock, full opening stabbing valve, flow sensors and fluid level controls.

8. TESTING, LOGGING AND CORING PROGRAM:

Drill stem test will be made when drilling time, samples, and other data indicate a test is warranted.

It is planned that a compensated neutron-density gamma ray and gamma ray dual laterolog will be run when total depth is reached.

No coring is planned.

9. ABNORMAL PRESSURES, TEMPERATURES OR HYDROGEN SULFIDE GAS:

None anticipated.

10. ANTICIPATED STARTING DATE:

It is planned that operations will commence on April 01, 1994 or upon approval of this application.

RECEIVED

MAY 14 1994

LOGS
OFFICE

SURFACE USE AND OPERATIONS PLAN
FOR
J.C. WILLIAMSON
TRIPLE "A" FEDERAL #3 WELL
1980' FNL & 1650' FEL Sec. 10, T-23-S, R-34-E
LEA COUNTY, NEW MEXICO

LOCATED: 26 miles west of Jal, New Mexico

FEDERAL LEASE NUMBER: NM 15035

LEASE ISSUED: March 1, 1972 for 10 years. Lease is now held by production.

RECORD LESSEE: Belco Petroleum

ACRES IN LEASE: Originally 400 acres, but reduced to 360 by 40 acres assigned to a communitized area.

SURFACE OWNERSHIP: State surface, under contract to Mrs. Frances Maddox.

SURFACE LESSEE: Mrs. Frances W. A. Maddox
Attn: Mr. J.W. Neal
P.O. Box 278
Hobbs, New Mexico

POOL: Antelope Ridge (Cherry Canyon)

POOL RULES Statewide. 40 acre spacing for oil wells.

ATTACHMENTS:

- A. General Road Map
- B. Plat Showing existing well and existing roads
- C. Drilling Rig Layout
- D. Topo Plat
- E. Casing and Cementing Program

RECEIVED

MAY 14 1994

**AD HOC
OFFICE**

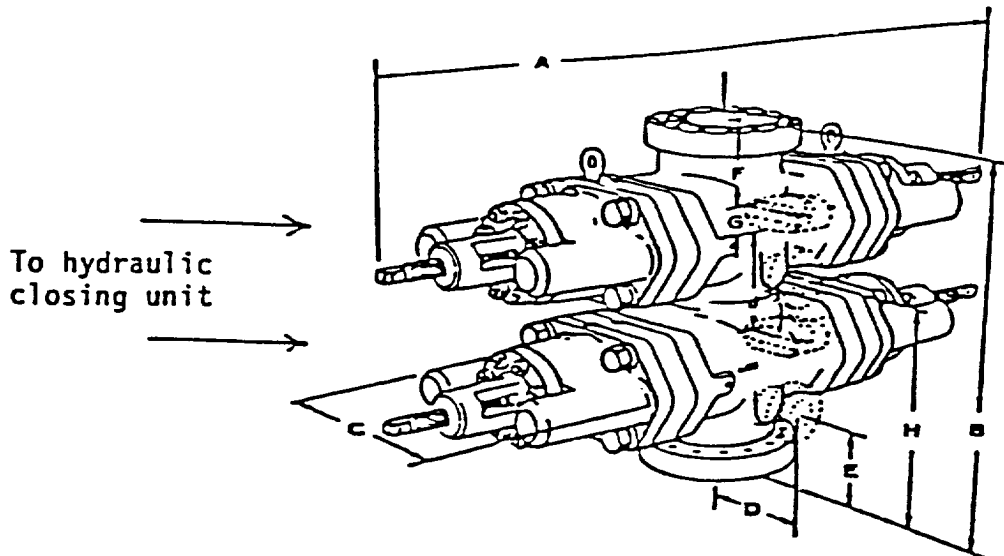
RECEIVED

MAR 23 10 37 AM '84

UAB
ARCO

BOP Diagram

After 13-3/8" surface casing has been set and cement circulated to the surface, an 11" double ram BOP, as shown below will be put on the hole. This blowout preventer will be connected to a hydraulically controlled closing unit. The pressure rating on this BOP is 3000#, and will have blank and 5-1/2" pipe rams.



J.C. WILLIAMSON
TRIPLE "A" FEDERAL #3

Sec. 27-T26S-R30E
EDDY CO., NM

RECEIVED

MAY 10 1994

FOR RECORDS
OFFICE

57-1-2