

SUBMIT IN TRIPLICATE

N.M. OIL CONS. COMMISS
P.O. BOX 1980
HOBBS, NEW MEXICO 88401
DEPARTMENT OF THE INTERIOR
BUREAU OF LAND MANAGEMENT

GRID NO. 22351
PROPERTY NO. 10889
POOL CODE 07900
EFF. DATE 9-21-94
API NO. 30-025-32673
5. Lease Designation and Serial No. LC-032104

APPLICATION FOR PERMIT TO DRILL OR DEEPEN

1a. Type of Work DRILL <input checked="" type="checkbox"/> DEEPEN <input type="checkbox"/>	1b. Type of Well OIL WELL <input checked="" type="checkbox"/> GAS WELL <input type="checkbox"/> OTHER <input type="checkbox"/>	SINGLE ZONE <input type="checkbox"/> MULTIPLE ZONE <input checked="" type="checkbox"/>	6. If Indian, Allottee or Tribe Name
2. Name of Operator TEXACO EXPLORATION & PRODUCTION INC.			7. If Unit or CA, Agreement Designation
3. Address and Telephone No. P.O. Box 3109, Midland Texas 79702 688-4608			8. Well Name and Number BLINEBRY, A.H. FEDERAL NCT-1
4. Location of Well (Report location clearly and in accordance with any State requirements. *) At Surface Unit Letter M : 330 Feet From The SOUTH Line and 990 Feet From The WEST Line At proposed prod. zone SAME			9. API Well No. 45
14. Distance In Miles and Direction from Nearest Town or Post Office* 6 MILES SE OF EUNICE, NM			10. Field and Pool, Exploratory Area SOUTH BRUNSON DRINKARD-ABO; TUBB, OIL & GAS
15. Distance From Proposed* Location to Nearest Property or Lease Line, Ft. (also to nearest drlg. unit line, if any) 1045'		16. No. of Acres in Lease 2255.12	11. SEC., T., R., M., or BLK. and Survey or Area Sec. 20, Township 22-S, Range 38-E
18. Distance From Proposed Location* to Nearest Well, Drilling, Completed or Applied For, On This Lease, Ft. 465'		19. Proposed Depth 7650'	12. County or Parish LEA
21. Elevations (Show whether DF, RT, GR, etc.) GR-3381'		20. Rotary or Cable Tools R	13. State NM
22. Approx. Date Work Will Start* 9/3/94			17. No. of Acres Assigned To This Well 40

23. PROPOSED CASING AND CEMENT PROGRAM				
SIZE OF HOLE	GRADE, SIZE OF CASING	WEIGHT PER FOOT	SETTING DEPTH	QUANTITY OF CEMENT
11	8 5/8	24#	1340'	710 SACKS CIRCULATE
7 7/8	5 1/2	15.5 & 17#	7650'	3400 SACKS

CEMENTING PROGRAM:

SURFACE CASING - 460 SACKS CLASS C W/ 4% GEL, 2% CACL2 (13.5 PPG, 1.74 CF/S, 9.11 GW/S). F/B 250 SACKS CLASS C W/ 2% CACL2 (14.8 PPG, 1.34 CF/S, 6.31 GW/S).

PRODUCTION CASING - 2900 SACKS 35/65 POZ CLASS H W/ 6% GEL, 5% SALT, 1/4# FLOCELE (12.8 PPG, 1.94 CFS, 10.46 GW/S). F/B 500 SACKS 50/50 POZ CLASS H W/ 2% GEL, 5% SALT, 1/4# FLOCELE (14.2 PPG, 1.35 CF/S, 6.3 GW/S).

THERE ARE NO OTHER OPERATORS IN THIS QUARTER QUARTER SECTION.

Approved Subject to
Cement Treatments and
Special Regulations
Attached

In Above Space Describe Proposed Program: If proposal is to deepen, give data on present productive zone and proposed new productive zone. If proposal is to drill or deepen directionally, give pertinent data on subsurface locations and measured true verticle depths. Give blowout preventer program, if any.

24. I hereby certify that the foregoing is true and correct

SIGNATURE C. P. Basham / JON TITLE Drilling Operations Mgr. DATE 8/3/94
TYPE OR PRINT NAME C. P. Basham

(This space for Federal or State office use)

PERMIT NO. _____ APPROVAL DATE _____
Application approval does not warrant or certify that the Applicant holds legal or equitable title to those rights in the subject lease which would entitle the applicant to conduct operations thereon.
APPROVED BY Tom J. Herrel TITLE (For) **AREA MANAGER** DATE SEP 09 1994
CONDITIONS OF APPROVAL, IF ANY: _____

Title 18 U.S.C. Section 1001, makes it a crime for any person knowingly and willfully to make to any department or agency of the United States any false, fictitious or fraudulent statements or representations as to any matter within its jurisdiction.

DISTRICT I
P. O. Box 1980, Hobbs, NM 88240

DISTRICT II
P. O. Drawer D0, Artesia, NM 88210

DISTRICT III
1000 Rio Brazos Rd., Aztec, NM 87410

DISTRICT IV
P. O. Box 2088, Santa Fe, NM 87504-2088

State of New Mexico
Energy, Minerals and Natural Resources Department

Form C-10
Revised February 10, 199

Instructions on bac

Submit to Appropriate District Office

State Lease-4 copie

Fee Lease-3 copie

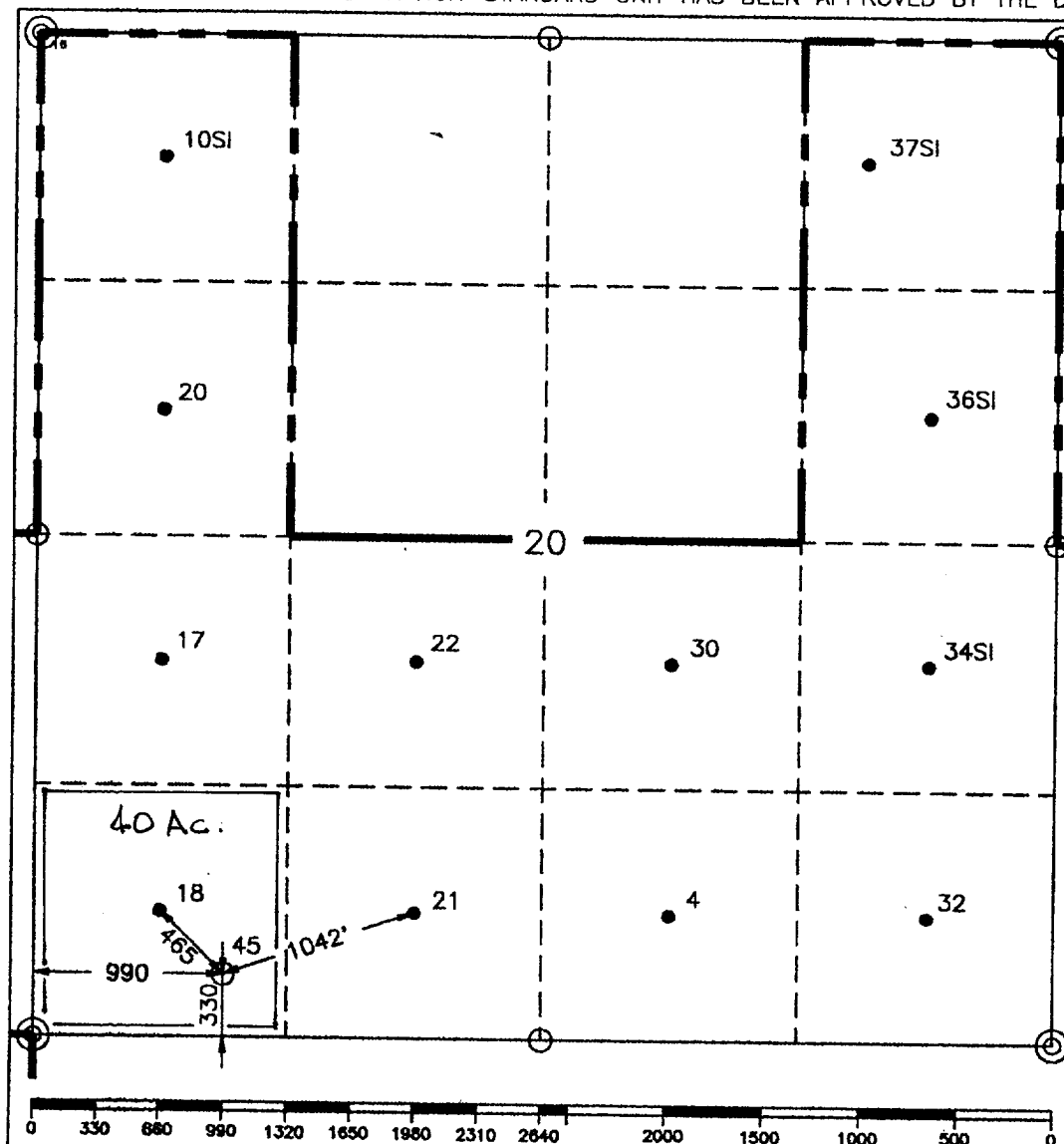
OIL CONSERVATION DIVISION
PO Box 2088
Santa Fe, NM 87504-2088

WELL LOCATION AND ACREAGE DEDICATION PLAT

☐ AMENDED REPORT

¹ API Number		² Pool Code 0900/6024D		³ Pool Name South Brunson Drinkard-ABO/Tubb Oil & Gas					
⁴ Property Code 10899		⁵ Property Name A. H. Blinebry NCT-1						⁶ Well Number 45	
⁷ GRID No. 22351		⁸ Operator Name TEXACO EXPLORATION & PRODUCTION, INC.						⁹ Elevation 3381	
¹⁰ Surface Location									
UL or lot no. M	Section 20	Township 22-S	Range 38-E	Lot Idn	Feet from the 330'	North/South line South	Feet from the 990'	East/West line West	⁷ County Lea
¹¹ Bottom Hole Location If Different From Surface									
UL or lot no.	Section	Township	Range	Lot Idn	Feet from the	North/South line	Feet from the	East/West line	⁷ County
¹² Dedicated Acres 40		¹³ Joint or Infill		¹⁴ Consolidation Code		¹⁵ Order No.			

NO ALLOWABLE WILL BE ASSIGNED TO THIS COMPLETION UNTIL ALL INTERESTS HAVE BEEN CONSOLIDATED
OR A NON-STANDARD UNIT HAS BEEN APPROVED BY THE DIVISION.



¹ OPERATOR CERTIFICATION

I hereby certify that the information contained herein is true and complete to the best of my knowledge and belief.

Signature

Royce D. Mariott/cwt

Printed Name

Royce D. Mariott

Position

Division Surveyor

Company

Texaco Expl. & Prod. Inc.

Date

July 13, 1994

¹⁸ SURVEYOR CERTIFICATION

I hereby certify that the well location shown on this plat was plotted from field notes of actual surveys made by me or under my supervision and that the same is true and correct to the best of my knowledge and belief.

Date Surveyed

July 6, 1994

Signature & Seal of Professional Surveyor

John S. Piper

Certificate No.

7254 John S. Piper

Sheet Sheet 8 of 8

○ = Staked Location ● = Producing Well ● = Injection Well ◇ = Water Supply Well ◆ = Plugged & Abandon Well
⊙ = Found Section Corner, 2 or 3" Iron Pipe & GLO B.C. ○ = Found 1/4 Section Corner, 1" Iron Pipe & GLO B.C.

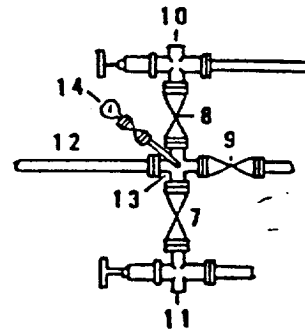
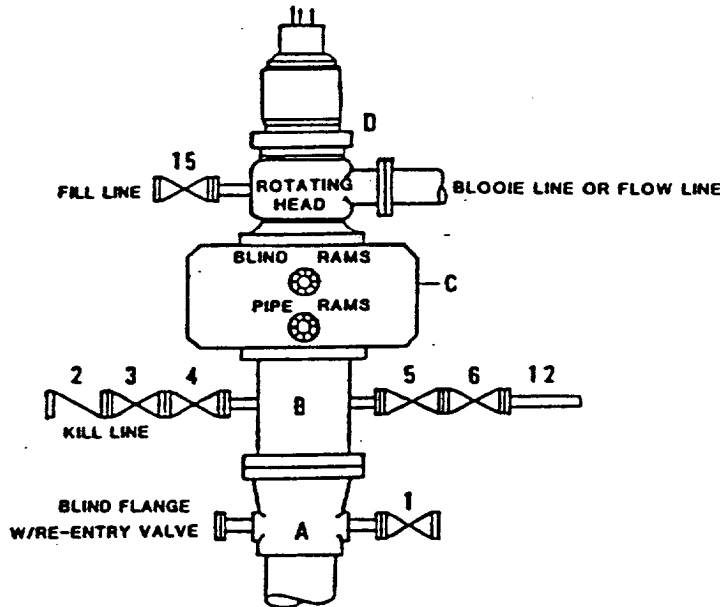
RECEIVED

SEP 21 1994

U.S. DEPT. OF JUSTICE
FEDERAL BUREAU OF INVESTIGATION

**DRILLING CONTROL
CONDITION II-B 3000 WP
FOR AIR DRILLING OR
WHERE NITROGEN OR AIR BLOWS ARE EXPECTED**

H₂S TRIM REQUIRED
YES X NO



DRILLING CONTROL

MATERIAL LIST - CONDITION II - B

- | | |
|----------------|---|
| A | Texaco Wellhead |
| B | 3000# W.P. drilling spool with a 2" minimum flanged outlet for kill line and 3" minimum flanged outlet for choke line. |
| C | 3000# W.P. Dual ram type preventer, hydraulic operated with 1" steel, 3000# W.P. control lines (where sub-structure height is adequate, 2 - 3000# W.P. single ram type preventers may be utilized). |
| D | Rotating Head with fill up outlet and extended Blooe Line. |
| 1,3,4,
7,8, | 2" minimum 3000# W.P. flanged full opening steel gate valve, or Halliburton Lo Torc Plug valve. |
| 2 | 2" minimum 3000# W.P. back pressure valve. |
| 5,6,9 | 3" minimum 3000# W.P. flanged full opening steel gate valve, or Halliburton Lo Torc Plug valve. |
| 12 | 3" minimum schedule 80, Grade "B", seamless line pipe. |
| 13 | 2" minimum x 3" minimum 3000# W.P. flanged cross. |
| 10,11 | 2" minimum 3000# W.P. adjustable choke bodies. |
| 14 | Cameron Mud Gauge or equivalent (location optional in choke line). |
| 15 | 2" minimum 3000# W.P. flanged or threaded full opening steel gate valve, or Halliburton Lo Torc Plug valve. |



TEXACO, INC.
MIDLAND DIVISION
MIDLAND, TEXAS



SCALE	DATE	EST. NO.	DRG. NO.
DRAWN BY			
CHECKED BY			
APPROVED BY			

EXHIBIT C

DRILLING PROGRAM

A.H. BLINEBRY FEDERAL NCT-1 WELL NO. 45

SURFACE DESCRIPTION:

The land surface in the area is relatively level with some moderate sand dunes. Top soil at the well site is a moderate to deep sandy loam. Vegetation consists mainly of scrub oak, mesquite and desert grasses.

FORMATION TOPS: Estimated KB Elevation: 3396'

<u>Formation</u>	<u>Depth</u>	<u>Lithology</u>	<u>Fluid Content</u>
Rustler	1279'	Anhydrite, Salt	----
Salado	1379'	Salt	----
San Andres	4046'	Limestone	----
Blinebry	5601'	Dolomite	Oil
Tubb	6151'	Sandstone, Dolomite	Oil and Gas
Drinkard	6376'	Dolomite	Oil and Gas
Abo	6637'	Dolomite, Limestone	Oil and Gas
Granite Wash	7471'	Sandstone	Oil and Gas

The base of the salt section is found around 2700'. No abnormal pressures or temperatures are anticipated to be encountered in this well. H₂S is possible in this well. H₂S RADIUS OF EXPOSURE: 100ppm = 18 feet, 500ppm = 8 feet, based on 1050ppm and 60 mcf. (See attached H₂S Drilling Operations Plan. H₂S equipment to be operational prior to drilling out Surface Casing Shoe.)

PRESSURE CONTROL EQUIPMENT:

A 3000 psi Dual Ram type preventer with rotating head will be used. (See Exhibit C). We do not plan to have an annular preventer. We will be able to achieve full closure of the well with the double ram preventer. It will be installed after surface casing is set. BOP will be tested each time it is installed on a casing string and at least every 29 days, and operated at least once each 24-hour period during drilling.

A PVT system will not be installed. We will be drilling through the reserve pit and will circulate the steel pits one hour each tour to check for gains and losses and will be noted on the driller's log, which is Texaco's policy.

We do not plan to run an automatic remote-controlled choke. We will have installed and tested two manual, H₂S trimmed, chokes.

CASING AND CEMENT PROGRAM:

The casing and cementing programs are detailed on Form 3160-3. All casing will be new.

Centralizer Program:

Surface Casing - Centralize the bottom 3 joints and every 4th to surface.

Production Casing - Centralize the bottom 3 joints and every other joint from 6000'-7650'.

MUD PROGRAM:

<u>Depth</u>	<u>Type</u>	<u>Weight</u>	<u>Viscosity</u>
0'-1340'	Fresh Water	8.4	28
1340'-7650'	Brine Water	10.0	29

LOGGING, TESTING:

GR-CNL-FDC-CAL, GR-DLL-MSFL, GR-BHC SONIC, FULL-WAVE SONIC surveys will be run.

A two-man Mud Logging Unit will be used from 4000' to 7650'.

No drill stem tests will be conducted.

No cores will be taken.

56/8/8
110

RECEIVED

SEP 1 1994

LIBRARY