

UNITED STATES  
DEPARTMENT OF THE INTERIOR  
BUREAU OF LAND MANAGEMENT

N.M. C  
P.O. B  
HOBB

SUBMIT IN TRIPLICATE

OPER. OGRID NO. 22351

PROPERTY NO. 10844

POOL CODE 07900

EFF. DATE 9-22-94

APINO 30-025-32674

D. Lease Designation and Serial No.  
LC-032104

APPLICATION FOR PERMIT TO DRILL OR DEEPEN

1a. Type of Work **DRILL** ☒ **DEEPEN** ☐  
1b. Type of Well  
OIL ☒ GAS ☐ OTHER ☐  
WELL ☐ SINGLE ZONE ☐  
MULTIPLE ZONE ☒

2. Name of Operator  
TEXACO EXPLORATION & PRODUCTION INC.

3. Address and Telephone No.  
P.O. Box 3109, Midland Texas 79702 688-4608

4. Location of Well (Report location clearly and in accordance with any State requirements. \*)  
At Surface  
Unit Letter A : 330 Feet From The NORTH Line and 330 Feet From The EAST Line  
At proposed prod. zone  
SAME

14. Distance In Miles and Direction from Nearest Town or Post Office\*  
6 MILES SE OF EUNICE, NM

15. Distance From Proposed\* Location to Nearest Property or Lease Line, Ft. (also to nearest drlg. unit line, if any) 990'

18. Distance From Proposed Location\* to Nearest Well, Drilling, Completed or Applied For, On This Lease, Ft. 664'

21. Elevations (Show whether DF, RT, GR, etc.)

GR-3369'

Capitan Controlled Water Basin

6. If Indian, Alottee or Tribe Name

7. If Unit or CA, Agreement Designation

8. Well Name and Number  
BLINEBRY, A.H. FEDERAL NCT-1

9. API Well No.

10. Field and Pool, Exploatory Area  
SOUTH BRUNSON DRINKARD-ABO; TUBB OIL & GAS

11. SEC., T., R., M., or BLK. and Survey or Area  
Sec. 29, Township 22-S, Range 38-E

12. County or Parish  
LEA

13. State  
NM

17. No. of Acres Assigned To This Well  
40

20. Rotary or Cable Tools  
R

22. Approx. Date Work Will Start\*  
9/3/94

23. PROPOSED CASING AND CEMENT PROGRAM

SIZE OF HOLE	GRADE, SIZE OF CASING	WEIGHT PER FOOT	SETTING DEPTH	QUANTITY OF CEMENT
11	8 5/8	24#	1390'	710 SACKS
7 7/8	5 1/2	15.5 & 17#	7800'	3400 SACKS

CEMENTING PROGRAM:

SURFACE CASING - 460 SACKS CLASS C W/ 4% GEL, 2% CACL2 (13.5 PPG, 1.74 CF/S, 9.11 GW/S). F/B 250 SACKS CLASS C W/ 2% CACL2 (14.8 PPG, 1.34 CF/S, 6.31 GW/S).

PRODUCTION CASING - 2900 SACKS 35/65 POZ CLASS H W/ 6% GEL, 5% SALT, 1/4# FLOCELE (12.8 PPG, 1.94 CFS, 10.46 GW/S). F/B 500 SACKS 50/50 POZ CLASS H W/ 2% GEL, 5% SALT, 1/4# FLOCELE (14.2 PPG, 1.35 CF/S, 6.3 GW/S).

THERE ARE NO OTHER OPERATORS IN THIS QUARTER QUARTER SECTION.

In Above Space Describe Proposed Program: If proposal is to deepen, give data on present productive zone and proposed new productive zone. If proposal is to drill or deepen directionally, give pertinent data on subsurface locations and measured true verticle depths. Give blowout preventer program, if any.

24. I hereby certify that the foregoing is true and correct

SIGNATURE C. P. Basham / SDH TITLE Drilling Operations Mgr. DATE 8/3/94

TYPE OR PRINT NAME C. P. Basham

(This space for Federal or State office use)

PERMIT NO. APPROVAL DATE

Application approval does not warrant or certify that the applicant holds legal or equitable title to those rights in the subject lease which would entitle the applicant to conduct operations thereon.

APPROVED BY /s/ Scott Powell TITLE AREA MANAGER (Acting) DATE SEP 09 1994

CONDITIONS OF APPROVAL, IF ANY:

Title 18 U.S.C. Section 1001, makes it a crime for any person knowingly and willfully to make to any department or agency of the United States any false, fictitious or fraudulent statements or representations as to any matter within its jurisdiction.

DISTRICT 1  
P. O. Box 1980, Hobbs, NM 88240

DISTRICT II  
P. O. Box 88, Artesia, NM 88210

DISTRICT III  
1000 Rio Brazos Rd., Aztec, NM 87410

DISTRICT IV  
P. O. Box 2088, Santa Fe, NM 87504-2088

State of New Mexico  
Energy, Minerals and Natural Resources Department

OIL CONSERVATION DIVISION  
PO Box 2088  
Santa Fe, NM 87504-2088

Form C-102  
Revised February 10, 1994

Instructions on back

Submit to Appropriate District Office

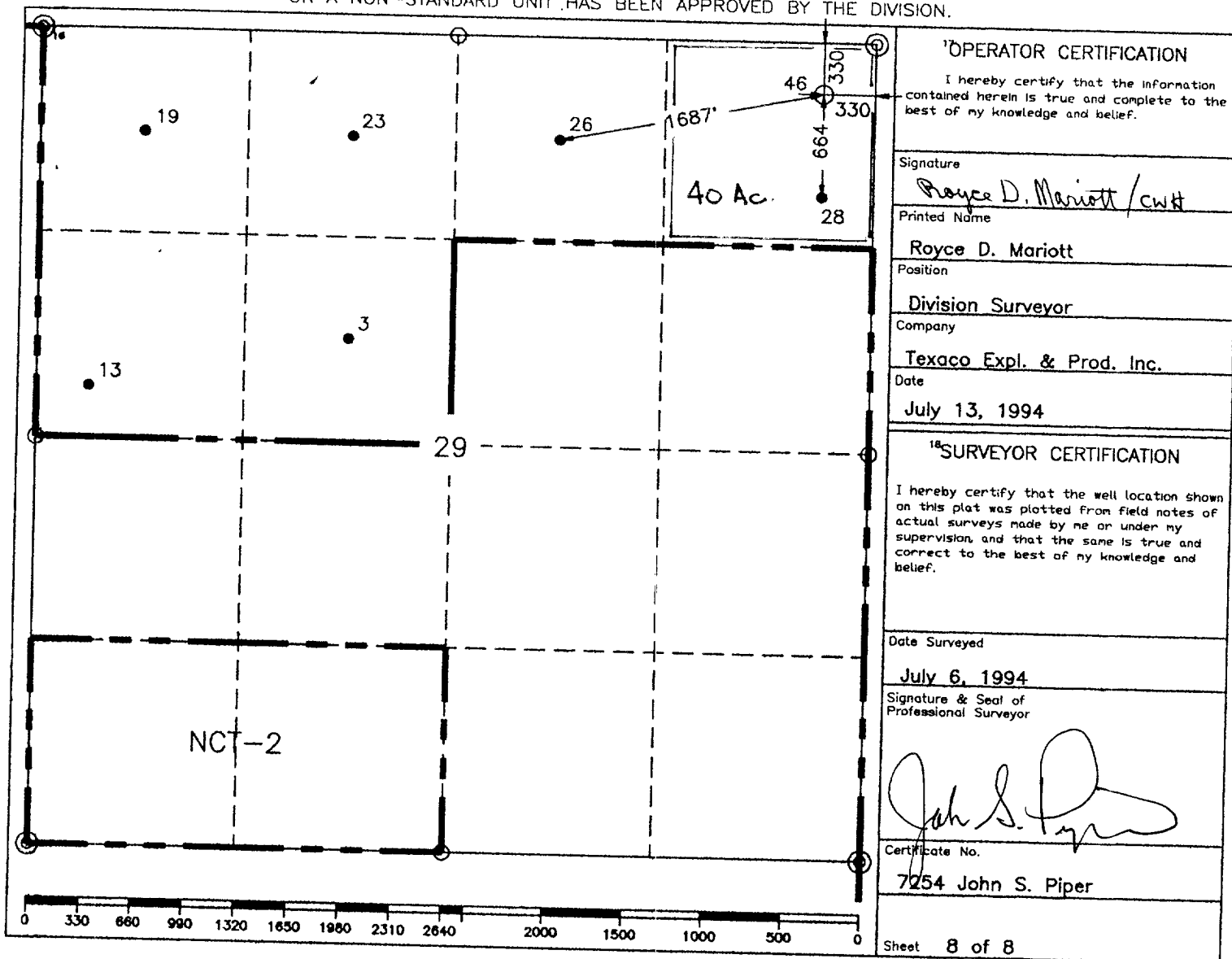
State Lease-4 copies  
Fee Lease-3 copies

WELL LOCATION AND ACREAGE DEDICATION PLAT

☐ AMENDED REPORT

1 API Number		2 Pool Code		3 Pool Name					
				South Brunson Drinkard-ABO; Tubb Oil & Gas					
4 Property Code		5 Property Name			6 Well Number				
		A.H. Blinebry NCT-1			46				
7 OGRID No.		8 Operator Name			9 Elevation				
		TEXACO EXPLORATION & PRODUCTION, INC.			3369'				
10 Surface Location									
UL or lot no.	Section	Township	Range	Lot Idn	Feet from the	North/South line	Feet from the	East/West line	7 County
A	29	22-S	38-E		330'	North	330'	East	Lea
11 Bottom Hole Location If Different From Surface									
UL or lot no.	Section	Township	Range	Lot Idn	Feet from the	North/South line	Feet from the	East/West line	7 County
12 Dedicated Acres		13 Joint or Infill		14 Consolidation Code		15 Order No.			
40									

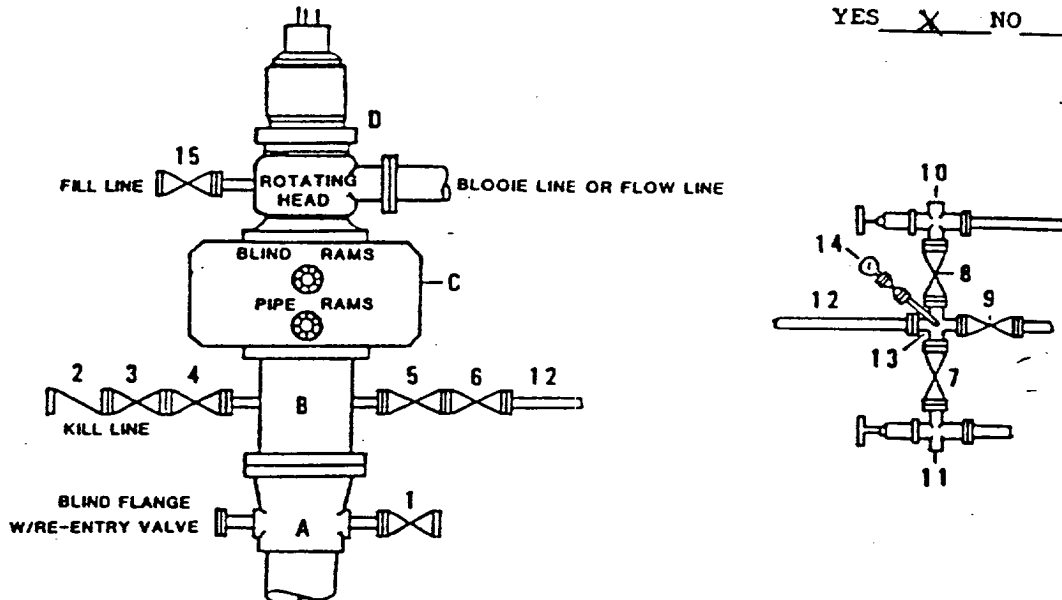
NO ALLOWABLE WILL BE ASSIGNED TO THIS COMPLETION UNTIL ALL INTERESTS HAVE BEEN CONSOLIDATED  
OR A NON-STANDARD UNIT HAS BEEN APPROVED BY THE DIVISION.



○ = Staked Location ● = Producing Well ● = Injection Well ◇ = Water Supply Well ◆ = Plugged & Abandon Well  
⊙ = Found Section Corner, 2 or 3" Iron Pipe & GLO B.C. ○ = Found 1/4 Section Corner, 1" Iron Pipe & GLO B.C.

**DRILLING CONTROL  
CONDITION II-B 3000 WP  
FOR AIR DRILLING OR  
WHERE NITROGEN OR AIR BLOWS ARE EXPECTED**

H<sub>2</sub>S TRIM REQUIRED  
YES X NO     



**DRILLING CONTROL**

**MATERIAL LIST - CONDITION II - B**

- A Texaco Wellhead
- B 3000# W.P. drilling spool with a 2" minimum flanged outlet for kill line and 3" minimum flanged outlet for choke line.
- C 3000# W.P. Dual ram type preventer, hydraulic operated with 1" steel, 3000# W.P. control lines (where sub-structure height is adequate, 2 - 3000# W.P. single ram type preventers may be utilized).
- D Rotating Head with fill up outlet and extended Bleed Line.
- 1,3,4, 7,8, 2" minimum 3000# W.P. flanged full opening steel gate valve, or Halliburton Lo Torc Plug valve.
- 2 2" minimum 3000# W.P. back pressure valve.
- 5,6,9 3" minimum 3000# W.P. flanged full opening steel gate valve, or Halliburton Lo Torc Plug valve.
- 12 3" minimum schedule 80, Grade "B", seamless line pipe.
- 13 2" minimum x 3" minimum 3000# W.P. flanged cross.
- 10,11 2" minimum 3000# W.P. adjustable choke bodies.
- 14 Cameron Mud Gauge or equivalent ( location optional in choke line).
- 15 2" minimum 3000# W.P. flanged or threaded full opening steel gate valve, or Halliburton Lo Torc Plug valve.



TEXACO, INC.  
MIDLAND DIVISION  
MIDLAND, TEXAS



SCALE	DATE	EST NO.	DRG NO.
DRAWN BY			
CHECKED BY			
APPROVED BY			

EXHIBIT C

## DRILLING PROGRAM

A.H. BLINEBRY FEDERAL NCT-1 WELL NO. 46

### **SURFACE DESCRIPTION:**

The land surface in the area is relatively level with some moderate sand dunes. Top soil at the well site is a moderate to deep sandy loam. Vegetation consists mainly of scrub oak, mesquite and desert grasses.

**FORMATION TOPS:** Estimated KB Elevation: 3383'

<u>Formation</u>	<u>Depth</u>	<u>Lithology</u>	<u>Fluid Content</u>
Rustler	1363'	Anhydrite, Salt	----
Salado	1463'	Salt	----
San Andres	4183'	Limestone	----
Blinebry	5733'	Dolomite	Oil
Tubb	6323'	Sandstone, Dolomite	Oil and Gas
Drinkard	6558'	Dolomite	Oil and Gas
Abo	6843'	Dolomite, Limestone	Oil and Gas
Granite Wash	7623'	Sandstone	Oil and Gas

The base of the salt section is found around 2750'. No abnormal pressures or temperatures are anticipated to be encountered in this well. H<sub>2</sub>S is possible in this well. H<sub>2</sub>S RADIUS OF EXPOSURE: 100ppm = 18 feet, 500ppm = 8 feet, based on 1050ppm and 60 mcf. (See attached H<sub>2</sub>S Drilling Operations Plan. H<sub>2</sub>S equipment to be operational prior to drilling out Surface Casing Shoe.)

### **PRESSURE CONTROL EQUIPMENT:**

A 3000 psi Dual Ram type preventer with rotating head will be used. (See Exhibit C). We do not plan to have an annular preventer. We will be able to achieve full closure of the well with the double ram preventer. It will be installed after surface casing is set. BOP will be tested each time it is installed on a casing string and at least every 29 days, and operated at least once each 24-hour period during drilling.

A PVT system will not be installed. We will be drilling through the reserve pit and will circulate the steel pits one hour each tour to check for gains and losses and will be noted on the driller's log, which is Texaco's policy.

We do not plan to run an automatic remote-controlled choke. We will have installed and tested two manual, H<sub>2</sub>S trimmed, chokes.

**CASING AND CEMENT PROGRAM:**

The casing and cementing programs are detailed on Form 3160-3. All casing will be new.

**Centralizer Program:**

Surface Casing - Centralize the bottom 3 joints and every 4th to surface.

Production Casing - Centralize the bottom 3 joints and every other joint from 6000'-7800'.

**MUD PROGRAM:**

<u>Depth</u>	<u>Type</u>	<u>Weight</u>	<u>Viscosity</u>
0'-1390'	Fresh Water	8.4	28
1390'-7800'	Brine Water	10.0	29

**LOGGING, TESTING:**

GR-CNL-FDC-CAL, GR-DLL-MSFL, GR-BHC SONIC surveys will be run.

A two-man Mud Logging Unit will be used from 4000' to 7800'.

No drill stem tests will be conducted.

No cores will be taken.