

# NM OIL CON' COMMISSION

DRAWER DD

ARTESIA, NM 88210

Form 3160-3  
(July 1992)

SUBMIT IN TRIPLICATE\*

(Other instructions on  
reverse side)

FORM APPROVED  
OMB NO. 1004-0136  
Expires: February 28, 1995

## UNITED STATES DEPARTMENT OF THE INTERIOR BUREAU OF LAND MANAGEMENT

### APPLICATION FOR PERMIT TO DRILL OR DEEPEN

1a. TYPE OF WORK

DRILL ☒

DEEPEN ☐

b. TYPE OF WELL

OIL  
WELL ☒

S/S

GAS  
WELL ☐

OTHER

SINGLE  
ZONE ☒

MULTIPLE  
ZONE ☐

2. NAME OF OPERATOR

Enron Oil & Gas Company

NOV 30 '94

3. ADDRESS AND TELEPHONE NO.

P. O. Box 2267, Midland, Texas 79702

4. LOCATION OF WELL (Report location clearly and in accordance with any State requirements.)

At surface

2310' FNL & 2310' FWL

At proposed prod. zone

2310' FNL & 2310' FWL

14. DISTANCE IN MILES AND DIRECTION FROM NEAREST TOWN OR POST OFFICE\*

35 miles NW from Jal

15. DISTANCE FROM PROPOSED\*

LOCATION TO NEAREST

PROPERTY OR LEASE LINE, FT.

(Also to nearest drlg. unit line, if any)

2310

330

16. NO. OF ACRES IN LEASE

640

17. NO. OF ACRES ASSIGNED  
TO THIS WELL

40

18. DISTANCE FROM PROPOSED LOCATION\*

TO NEAREST WELL, DRILLING, COMPLETED,

OR APPLIED FOR, ON THIS LEASE, FT.

2640'

19. PROPOSED DEPTH

8900

20. ROTARY OR CABLE TOOLS

Rotary

21. ELEVATIONS (Show whether L.F., RT., GR., etc.)

3611' GR

22. APPROX. DATE WORK WILL START\*

November 18, 1994

23.

#### PROPOSED CASING AND CEMENTING PROGRAM

SIZE OF HOLE	GRADE SIZE OF CASING	WEIGHT PER FOOT	SETTING DEPTH	QUANTITY OF CEMENT
17-1/2	13-3/8 H-40 A ST&C	42#	650	275 sx CIRCULATED
11	8-5/8 J-55 LT&C	32#	4600	725 sx CIRCULATED
7-7/8	5-1/2 N-80 LT&C	17#	8900	300 sx est TOC @ 3500'

The Undersigned accepts all applicable terms, conditions, stipulations,  
and restrictions concerning operations conducted on leased land or  
portions thereof as shown below:

NM 14157

Section 30, T23S, R32E

Bone Spring Formation

OPER. OGR. NO. 15772

PROPERTY NO. 15772

POOL CODE 53805

EFF. DATE 12-2-94

API NO. 30-025-3-2754

Federal Bond number is MT 0748 with endorsement to New Mexico.

IN ABOVE SPACE DESCRIBE PROPOSED PROGRAM: If proposal is to deepen, give data on present productive zone and proposed new productive zone. If proposal is to drill or deepen directionally, give pertinent data on subsurface locations and measured and true vertical depths. Give blowout preventer program, if any.

24.

SIGNED

Betty Gildon

TITLE

Regulatory Analyst

DATE

11/1/94

(This space for Federal or State office use)

PERMIT NO.

APPROVAL DATE

Application approval does not warrant or certify that the applicant holds legal or equitable title to those rights in the subject lease which would entitle the applicant to the same thereon.  
CONDITIONS OF APPROVAL, IF ANY:

APPROVAL SUBJECT TO  
GENERAL REQUIREMENTS AND  
SPECIAL STIPULATIONS  
ATTACHED

APPROVED BY

(ORIG. SGD.) RICHARD L. MANUS

TITLE

DATE

11/23/94

\*See Instructions On Reverse Side

Title 18 U.S.C. Section 1001, makes it a crime for any person knowingly and willfully to make to any department or agency of the  
false statements or representations as to any matter within its jurisdiction.

District I  
PO Box 1980, Hobbs, NM 88241-1980  
District II  
PO Drawer DD, Artesia, NM 88211-0719  
District III  
1000 Rio Brazos Rd., Aztec, NM 87410  
District IV  
PO Box 2088, Santa Fe, NM 87504-2088

State of New Mexico  
Energy, Minerals & Natural Resources Department

OIL CONSERVATION DIVISION  
PO Box 2088  
Santa Fe, NM 87504-2088

Form C-102  
Revised February 21, 1994  
Instructions on back  
Submit to Appropriate District Office  
State Lease - 4 Copies  
Fee Lease - 3 Copies

☐ AMENDED REPORT

WELL LOCATION AND ACREAGE DEDICATION PLAT

<sup>1</sup> API Number 31-125-32754	<sup>2</sup> Pool Code 53805	<sup>3</sup> Pool Name Sand Dunes Bone Spring, South
<sup>4</sup> Property Code 15772	<sup>5</sup> Property Name TRESNOR MITCHELL "30" FEDERAL	<sup>6</sup> Well Number 2
<sup>7</sup> OGRID No. 7377	<sup>8</sup> Operator Name ENRON OIL AND GAS COMPANY	<sup>9</sup> Elevation 3611

<sup>10</sup>Surface Location

UL or lot no.	Section	Township	Range	Lot Idn	Feet from the	North/South line	Feet from the	East/West line	County
F	30	23-S	32-E		2310	NORTH	2310	WEST	LEA

<sup>11</sup>Bottom Hole Location If Different From Surface

UL or lot no.	Section	Township	Range	Lot Idn	Feet from the	North/South line	Feet from the	East/West line	County

<sup>12</sup> Dedicated Acres 40	<sup>13</sup> Joint or Infill	<sup>14</sup> Consolidation Code	<sup>15</sup> Order No.
-------------------------------------	-------------------------------	----------------------------------	-------------------------

NO ALLOWABLE WILL BE ASSIGNED TO THIS COMPLETION UNTIL ALL INTERESTS HAVE BEEN CONSOLIDATED  
OR A NON-STANDARD UNIT HAS BEEN APPROVED BY THE DIVISION

<div><div>18</div><div><div><div>2310'</div><div>2310'</div></div></div></div>	<div><div>17 OPERATOR CERTIFICATION</div><div>I hereby certify that the information contained herein is true and complete to the best of my knowledge and belief.</div><div><div>Betty Gildon</div><div>Signature</div></div><div>Betty Gildon</div><div>Printed Name</div><div>Regulatory Analyst</div><div>Title</div><div>10/18/94</div><div>Date</div></div>			
	<div><div>18 SURVEYOR CERTIFICATION</div><div>I hereby certify that the well location shown on this plat was plotted from field notes of actual surveys made by me or under my supervision, and that the same is true and correct to best of my belief.</div><div>10-10-94</div><div>Date of Survey</div><div>Signature and Seal of Professional Surveyor:</div><div><div>EARL FOOTE</div><div>NEW MEXICO</div><div>REGISTERED PROFESSIONAL LAND SURVEYOR</div><div>8278</div></div><div>Earl Foote</div><div>Certificate Number</div><div>8278</div></div>			

**RECEIVED**

11 01 1994

GOO HUBBS  
OFFICE

## DRILLING PROGRAM

Enron Oil & Gas Company  
Tresnor-Mitchell 30 Federal No. 2  
2310' FNL & 2310' FWL  
Sec. 30, T23S, R32E  
Lea County, New Mexico

1. Geologic Name of Surface Formation:

Permian

2. Estimated Tops of Important Geologic Markers:

Rustler	1020'
Delaware	4660'
Bell Canyon	4690'
Cherry Canyon	5745'
Bone Spring	8520'

3. Estimated Depths of Anticipated Fresh Water, Oil or Gas:

Delaware	4660'
Bone Spring	8520'

No other formations are expected to give up oil, gas or fresh water in measurable quantities. The surface fresh water sands will be protected by setting 11-3/4" casing at 650' and circulating cement back to surface, and 8-5/8" casing will be set at 4600' with cement circulating back to surface.

RECEIVED

NOV 11 1971  
OCD ILB &  
OFFICE



Enron Oil & Gas Company  
Tresnor-Mitchell 30 Federal No. 2  
2310' FNL & 2310' FWL  
Sec. 30, T23S, R32E  
Lea County, New Mexico

4. Casing Program:

<u>Hole Size</u>	<u>Interval</u>	<u>OD csg</u>	<u>Weight Grade Jt. Cond. Type</u>
17-1/2	0- 650'	13- <del>3</del> /8	42# H-40 A ST&C
11	0- 4600'	8-5/8	32# J-55 LT&C
7-7/8	0- 8900'	5-1/2	17# N-80 LT&C

Cementing Program:

**13-3/8"** Surface casing: Cement to surface with 275 sx of Class C  
+ 2% CaCl<sub>2</sub> + 1/4#/sx flocele.

8-5/8" Intermediate: Cement to surface with 425 sx of Premium Plus  
lite + 15#/sx salt + 1/4#/sx Flocele and 300 sx  
Cl C + 2% CaCl<sub>2</sub>

5-1/2" Production: Cement with 350 sx 50/50 Cl H/Poz + 0.8% Halad 9 +  
1/4#/sx Flocele. This cement slurry is designed to  
bring TOC to 3500.

575

5. Minimum Specifications for Pressure Control:

The blowout preventer equipment (BOP) shown in Exhibit #1 will consist of a double ram-type (3000 psi WP) preventer and an annular preventer (3000 psi WP). Units will be hydraulically operated and the ram-type will be equipped with blind rams on top and drill pipe rams on bottom. All will be installed on the **13-3/8"** surface casing and used continuously until TD is reached. All BOP's and accessory equipment will be tested to 1000 psi before drilling out of surface casing. Before drilling out of intermediate casing, the ram-type BOP and accessory equipment will be tested to 3000 psi and the annular to 70% of rated working pressure (2100 psi).

Pipe rams will be operationally checked each 24 hour period. Blind rams will be operationally checked on each trip out of the hole. These checks will be noted on the daily tour sheets. A 2" kill line and 4" choke line will be included in the drilling spool located below the ram-type BOP. Other accessories to the BOP equipment will include a kelly cock and floor safety valve (inside BOP) and choke lines and choke manifold with 3000 psi WP rating.

**RECEIVED**

DEC 01 1994

OCE HOBBS  
OFFICE



ENRON OIL & GAS COMPANY

Tresnor-Mitchell 30 Federal #2

ATTACHMENT

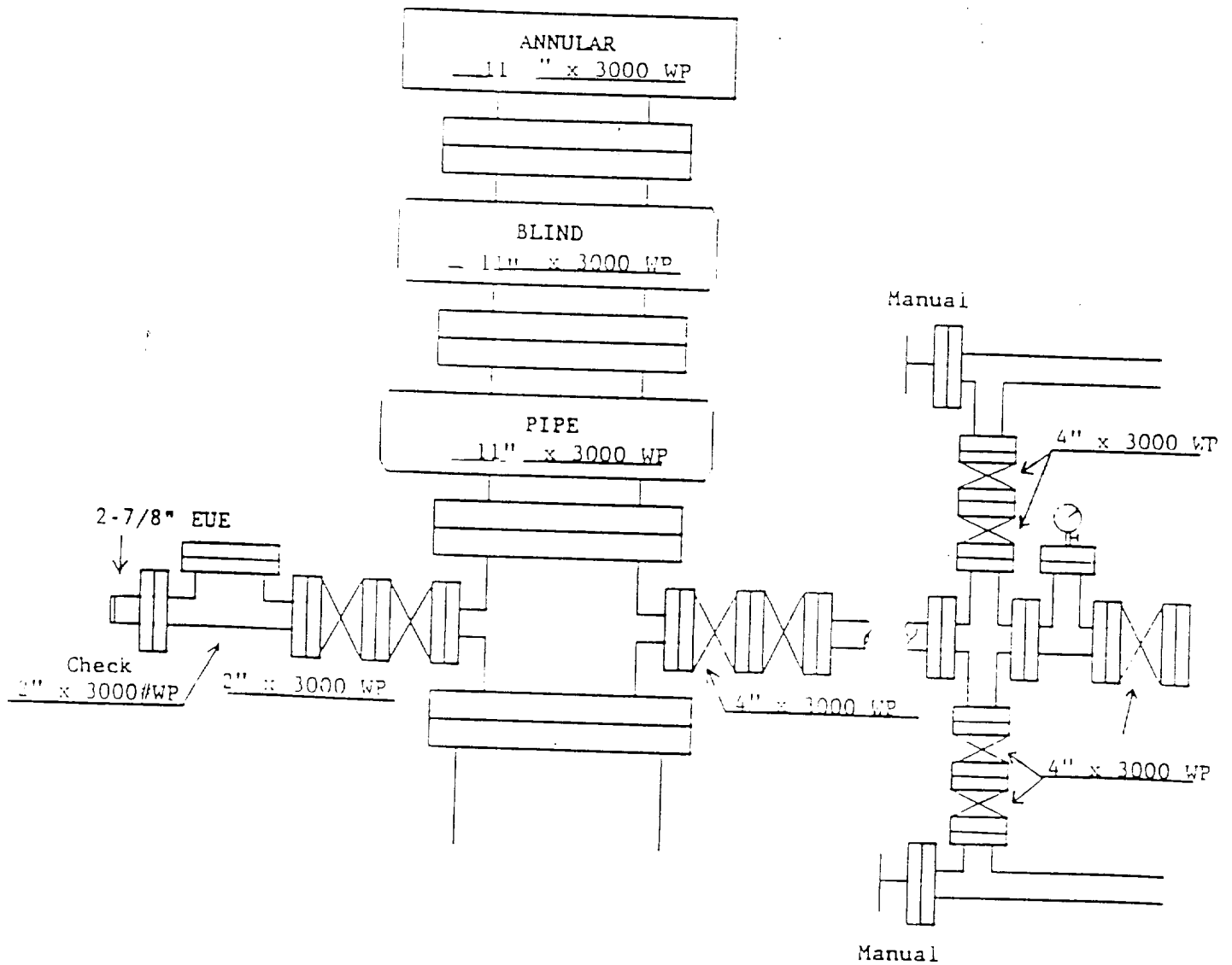


EXHIBIT #1

5/17/87  
173

5-187

194

UCC H 1084  
OFFICE