

UNITED STATES  
DEPARTMENT OF THE INTERIOR  
BUREAU OF LAND MANAGEMENT

N.M. Oil Co. Division  
P.O. Box 1980  
Hobbs, NM 88241

FORM APPROVED  
Budget Bureau No. 1004-0135  
Expires: March 31, 1993

SUNDRY NOTICES AND REPORTS ON WELLS

Do not use this form for proposals to drill or to deepen or reentry to a different reservoir.

Use "APPLICATION FOR PERMIT --" for such proposals

SUBMIT IN TRIPLICATE

1. Type of Well: ☒ OIL WELL ☐ GAS WELL ☐ OTHER

2. Name of Operator  
TEXACO EXPLORATION & PRODUCTION INC.

3. Address and Telephone No. P.O. Box 3109, Midland Texas 79702 688-4606

4. Location of Well (Footage, Sec., T., R., M., or Survey Description)  
Unit Letter O : 660 Feet From The SOUTH Line and \*2310 Feet From The  
EAST Line Section 31 Township 23-S Range 32-E

5. Lease Designation and Serial No.  
NM-18848

6. If Indian, Allottee or Tribe Name

7. If Unit or CA, Agreement Designation

8. Well Name and Number  
SDE '31' FEDERAL  
15

9. API Well No.  
30-025-32917

10. Field and Pool, Exploratory Area  
TRISTE DRAW WEST & SAND DUNES SOUTH BONE

11. County or Parish, State  
LEA, NM

12. Check Appropriate Box(s) To Indicate Nature of Notice, Report, or Other Data

TYPE OF SUBMISSION

- ☒ Notice of Intent  
☐ Subsequent Report  
☐ Final Abandonment Notice

TYPE OF ACTION

- ☐ Abandonment  
☐ Recompletion  
☐ Plugging Back  
☐ Casing Repair  
☐ Altering Casing  
☒ OTHER: MOVE LOCATION  
☐ Change of Plans  
☐ New Construction  
☐ Non-Routine Fracturing  
☐ Water Shut-Off  
☐ Conversion to Injection  
☐ Dispose Water

(Note: Report results of multiple completion on Well Completion or Recompletion Report and Log Form.)

13. Describe Proposed or Completed Operations (Clearly state all pertinent details, and give pertinent dates, including estimated date of starting any proposed work. If well is directionally drilled, give subsurface locations and measured and true vertical depths for all markers and zones pertinent to this work.)\*

CHANGE OF LOCATION: THIS WELL WAS MOVED 300' WEST FOR GEOLOGICAL REASONS.  
ATTACHED IS THE REVISED FORM C-102 AND SURFACE USE PLAN. THE ARCHAEOLOGICAL SURVEY REPORT WILL FOLLOW.

NEW LOCATION IS: 660' FSL AND 2310' FEL OF SECTION 31.

14. I hereby certify that the foregoing is true and correct

SIGNATURE C. Wade Howard TITLE Eng. Assistant DATE 11/21/96

TYPE OR PRINT NAME C. Wade Howard

(This space for Federal or State office use)

APPROVED BY (ORIG. SGD) DAVID R. GLASS TITLE PETROLEUM ENGINEER DATE DEC 11 1996

CONDITIONS OF APPROVAL, IF ANY:

Title 18 U.S.C. Section 1001, makes it a crime for any person knowingly and willfully to make to any department or agency of the United States any false, fictitious or fraudulent statements or representations as to any matter within its jurisdiction.

DISTRICT I  
P. O. Box 1980, Hobbs, NM 88240

DISTRICT II  
P. O. Drawer DD, Artesia, NM 88210

DISTRICT III  
1000 Rio Brazos Rd., Aztec, NM 87410

DISTRICT IV  
P. O. Box 2088, Santa Fe, NM 87504-2088

State of New Mexico  
Energy, Minerals and Natural Resources Department

OIL CONSERVATION DIVISION

P.O. Box 2088  
Santa Fe, NM 87504-2088

Form C-102  
Revised February 10, 1994

Instructions on back

Submit to Appropriate District Office

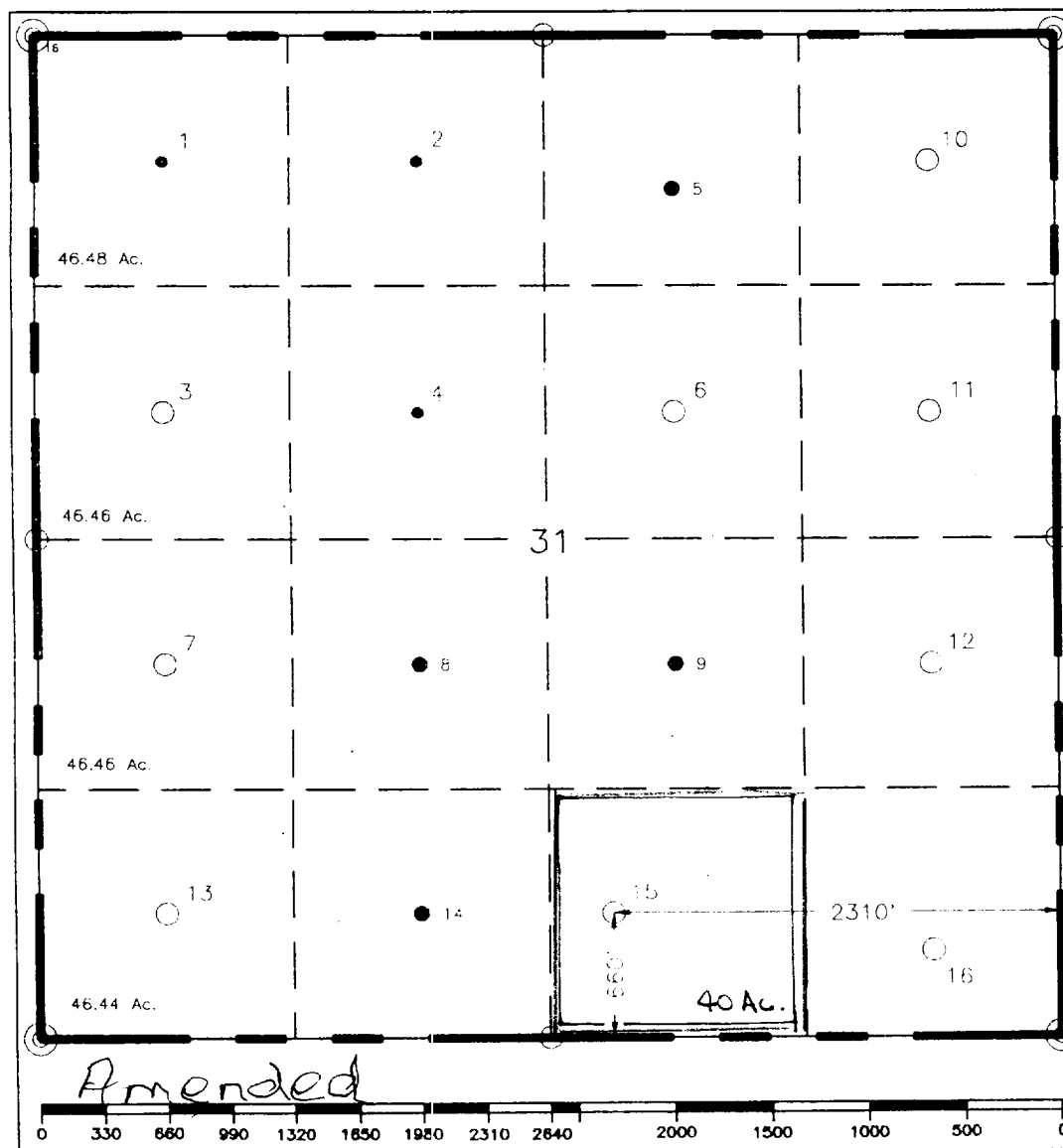
State Lease-4 copies  
Fee Lease-3 copies

☒ AMENDED REPORT

WELL LOCATION AND ACREAGE DEDICATION PLAT

<sup>1</sup> API Number 30-025-32917		<sup>2</sup> Pool Code 53805		<sup>3</sup> Pool Name SAND DUNES SOUTH BONE SPRINGS					
<sup>4</sup> Property Code 15704		<sup>5</sup> Property Name SDE "31" FEDERAL				<sup>6</sup> Well Number 15			
<sup>7</sup> GRID No. 22351		<sup>8</sup> Operator Name TEXACO EXPLORATION & PRODUCTION, INC.				<sup>9</sup> Elevation 3583'			
<sup>10</sup> Surface Location									
UL or lot no. 0	Section 31	Township 23-S	Range 32-E	Lot Idn	Feet from the 660'	North/South line South	Feet from the 2310'	East/West line East	<sup>7</sup> County Lea
<sup>11</sup> Bottom Hole Location If Different From Surface									
UL or lot no.	Section	Township	Range	Lot Idn	Feet from the	North/South line	Feet from the	East/West line	<sup>7</sup> County
<sup>12</sup> Dedicated Acres 40		<sup>13</sup> Joint or Infill		<sup>14</sup> Consolidation Code		<sup>15</sup> Order No.			

NO ALLOWABLE WILL BE ASSIGNED TO THIS COMPLETION UNTIL ALL INTERESTS HAVE BEEN CONSOLIDATED  
OR A NON-STANDARD UNIT HAS BEEN APPROVED BY THE DIVISION.



<sup>17</sup> OPERATOR CERTIFICATION	
I hereby certify that the information contained herein is true and complete to the best of my knowledge and belief.	
Signature <i>C. Wade Howard</i>	
Printed Name C. Wade Howard	
Position Engineer's Assistant	
Company Texaco Expl. & Prod. Inc.	
Date November 20, 1996	
<sup>18</sup> SURVEYOR CERTIFICATION	
I hereby certify that the well location shown on this plat was plotted from field notes of actual surveys made by me or under my supervision, and that the same is true and correct to the best of my knowledge and belief.	
Date Surveyed November 14, 1996	
Signature & Seal of Professional Surveyor <i>John S. Piper</i>	
Certificate No. 7254 John S. Piper	
Sheet 8 of 8	

**SURFACE USE AND OPERATIONS PLAN**  
**FOR**  
**TEXACO EXPLORATION AND PRODUCTION, INC.**

SDE "31" FEDERAL No. 15  
660' FSL & 2310' FEL, SECTION 31,  
TWP. 23 SOUTH, RANGE 32 EAST, N.M.P.M.,  
LEA COUNTY, NEW MEXICO

LOCATED: 23 miles Easterly of Loving, New Mexico and 31 miles  
Northwest of Jal, New Mexico

FEDERAL LEASE NUMBER: NM 18848

LEASE ISSUED: August 1, 1973

ACRES IN LEASE: 1994.13

RECORD LESSEE: TEXACO EXPLORATION AND PRODUCTION, Inc.

SURFACE OWNERSHIP: USA

GRAZING PERMITTEE: Mr. Charlie James  
1207 W. Riverside Drive  
Carlsbad, New Mexico 88220

POOL: Triste Draw West; Sand Dunes South Bone Spring

POOL RULES: Field Rules are for no wells to be located closer  
than 330' to any quarter-quarter section and to be 330' from the  
lease line.

EXHIBITS: A. Access Road and Facilities Map

B. Drilling Rig Layout Diagram

C. Well Location and Acreage Dedication Plat

## 1. EXISTING ACCESS ROADS

A. Exhibit "A" is an enlarged portion of a 7.5 minute U.S.G.S. topographic map showing the proposed well site and the existing roads in the area. Point "A" is at the intersection of an existing resource road and the Lea and Eddy County Line at a cattle guard in a North-South fence. Said point is 0.9 miles Southeast of its junction with Eddy County Road No. 798, being 1.7 miles North from its intersection with State Highway 128. Said intersection is approximately 35 miles West of Jal and 24 miles East of Loving, New Mexico along the major established Public Road System. From Point "A" as shown on Exhibit "A", on an existing resource road go 0.1 miles Easterly, then Southerly 0.35 miles entering the subject lease, continuing for a total distance of 0.55 miles, then Easterly 0.25 miles, then Southerly 0.25 miles, then 0.3 miles Easterly, 0.25 miles Southerly, 0.30 miles Westerly and Southerly 0.25 miles to Point "B" at the Southwest corner of the existing well pad for SDE "31" Federal No. 14 as shown on Exhibit "A".

## 2. PLANNED RESOURCE ROAD

A. Length and Width: From Point "B" as shown on Exhibit "A", a new 14 foot wide Resource Road will be constructed approximately 1338 feet East (Shown in red on Exhibit "A") with access at the Southwest corner of the proposed well pad, as shown on Exhibits "A" and "B".

B. Surfacing Material: Caliche material will be used to surface the proposed road. It will be watered, compacted, and graded.

C. Maximum Grade: An approximate grade of one to two percent will be encountered ascending from Point "B" to the proposed well pad.

D. Turnouts: Turnouts will not be required.

E. Drainage Design: The new road will be crowned at the center to direct drainage to ditches on both sides of the roadway with turnout ditches to be constructed as required.

F. Culverts: None will be required.

G. Cuts and Fills: A slight amount of leveling will be required as the road crosses immediate size sand dunes to the proposed well pad.

H. Gates and Cattle Guards: None will be required.

### 3. LOCATION OF EXISTING WELLS

A. Existing wells on the lease and in the immediate area are shown on Exhibit "A".

### 4. LOCATION OF EXISTING AND PROPOSED FACILITIES

A. The oil, gas, and/or water that this well produces will be transported by a 2 7/8" steel surface flowline (Shown in Green) to the SDE "31" Federal tank battery located in the Southeast quarter of the Northwest quarter of Section 31 as shown on Exhibit "A".

B. Approximately 1320 feet of electric line will be built to service this well as shown in Orange on Exhibit "A". Note that other existing and proposed electric lines are also shown on Exhibit "A" for reference. It will be a 12,470 phase to phase, 7200 volts to ground three phase. It will be operator owned.

### 5. LOCATION AND TYPE OF WATER SUPPLY

A. It is not contemplated that a water well would be drilled. Water necessary for drilling operations will be purchased and trucked to the well site or will be transported to the well site by a temporary pipeline laid on the ground along side existing and proposed roads.

### 6. SOURCE OF CONSTRUCTION MATERIALS

A. Caliche needed for the well pad and road will be taken from the proposed borrow pit located within the 400 x 400' archaeologically cleared tract at the proposed well site (See Exhibit "B" for location). If sufficient quality or quantity of caliche is not available, it will be transported to the proposed road and well site from the existing pit in the NW/4 of the SW/4 of Section 7, T24S, R32E, Lea County, by Eddy County Road 798 and the existing resource roads.

### 7. METHOD OF HANDLING WASTE DISPOSAL

A. Drill cuttings will be disposed of in the drilling pits.

B. Drilling fluids will be allowed to evaporate in the drilling pits until the pits are dry.

C. Water produced during tests will be disposed of at commercial or company facilities.

D. Oil produced during tests will be stored in test tanks until sold.

E. Trash, waste paper, garbage and junk will be placed in a trash bin located on the drill site pad. It will be transported to an approved landfill for disposal within 30 days after completion of drilling and/or completion of operations. All waste material will be contained to prevent scattering by the wind.

#### 8. ANCILLARY FACILITIES

A. None required.

#### 9. WELL SITE LAYOUT

A. Exhibit "B" shows the relative location and dimensions of the well pad, mud pits, borrow pit, and the location of the major rig components.

B. Cut and Fill requirements will be minor, but clearing and leveling of the well site will be necessary.

#### 10. PLANS FOR RECLAMATION OF THE SURFACE

A. After completion of drilling and/or completion of operations, all equipment and other material not needed for operations will be removed. Pits will be filled and the location will be cleaned of all trash and junk to leave the well site in an as aesthetically pleasing condition as possible.

B. Any unguarded pits containing fluids will be fenced until the pits are dry.

C. After abandonment all equipment, trash and junk will be removed and the well site will be cleaned. Any special reclamation and/or special revegetation requirements of the Surface Management Agency will be complied with and will be accomplished as rapidly as possible.

#### 11. OTHER INFORMATION

A. Topography: The land surface in the area of the well is relatively level with moderate sand dunes. Regionally, the land slopes to the Southwest with average slopes of one to two percent.

B. Soil: Top soil at the well site is a deep sandy loam.

C. Flora and Fauna: The vegetation cover is moderate. It includes range grasses, weeds, scrub oak bushes, and mesquite bushes. Wildlife in the area is that typical of a semi-arid desert land and includes coyotes, rabbits, rodents, reptiles, hawks, dove, quail and other small birds.

D. Ponds and Streams: There are no rivers, lakes, ponds, or streams in the area.

E. Residences and Other Structures: There are no occupied dwellings or other structures within 3/4 mile of the well site.

F. Archaeological, Historical, or other Cultural Sites: None were observed in the area.

G. Land Use: Grazing, oil and gas production, and wildlife habitat.

H. Surface Ownership: Federal

12. OPERATOR'S REPRESENTATIVE

C. Wade Howard  
Engineer's Assistant  
Texaco Exploration and Production, Inc.  
P. O. Box 3109  
Midland, Texas 79701  
Office Phone: (915) 688-4606

CERTIFICATION

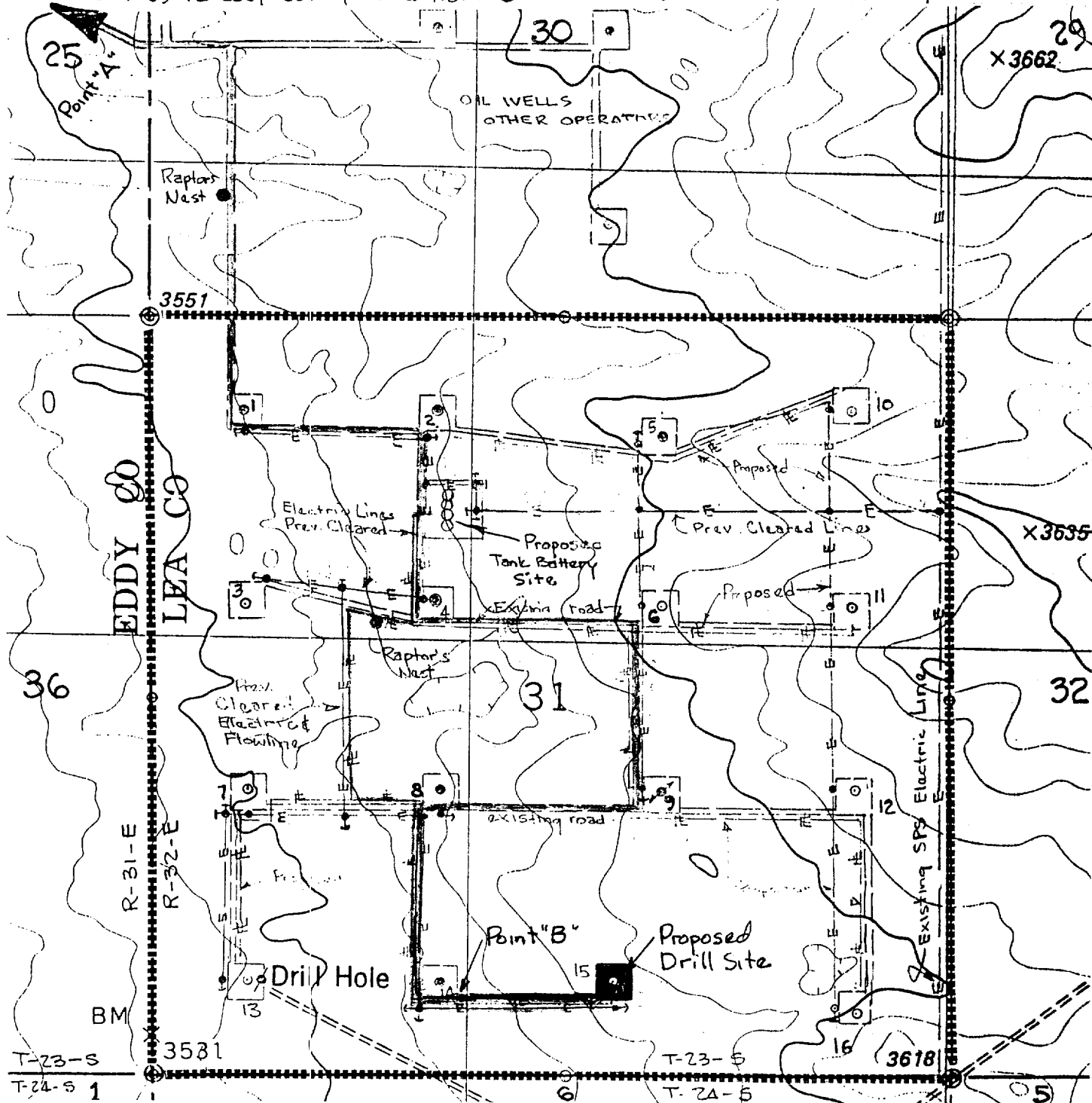
I hereby certify that I, or persons under my direct supervision, have inspected the proposed drill site and access route; that I am familiar with the conditions which currently exist; that the statements made in this plan are, to the best of my knowledge, true and correct; and, that the work associated with the operations proposed herein will be performed by Texaco Exploration and Production, Inc. and its contractors and sub-contractors in conformity with this plan and the terms and conditions under which it is approved. This statement is subject to the provisions of 18 U. S. C. 1001 for the filing of a false statement.

11/21/96  
Date

C. Wade Howard  
C. Wade Howard  
Engineer's Assistant  
Midland, Texas

Enclosures  
jsp

0.8 Miles to Eddy County Road No. 798 at 1.7 Miles North of State Hwy. No. 128



### LEGEND OF SYMEOLS

- = Access Road (Yellow)
- = Resource Road Federal Land (Pink)
- = Resource Road Private Land (Blue)
- = Resource Road on Lease (Brown)
- = Proposed Resource Road (Red)
- = Proposed Electric Line (Orange)
- = Proposed Production Flowline (Green)
- = Staked Well Location
- = Producing Well Location
- = Water Well
- = Found 1" Iron Pipe With Brass Cap
- ⊙ = Found 2" Iron Pipe With Brass Cap
- = Unit or Lease Boundary

### EXHIBIT "A" ACCESS ROAD AND FACILITIES MAP

### TEXACO EXPLORATION AND PRODUCTION

SDE FEDERAL "31" NO. 15  
660' FSL & 2310' FEL, Section 31,  
T-23-S, R-32-E, NMPM, Lea County, NM

Drawn by: D. E. Kelly

Scale: 1" = 1000 Feet

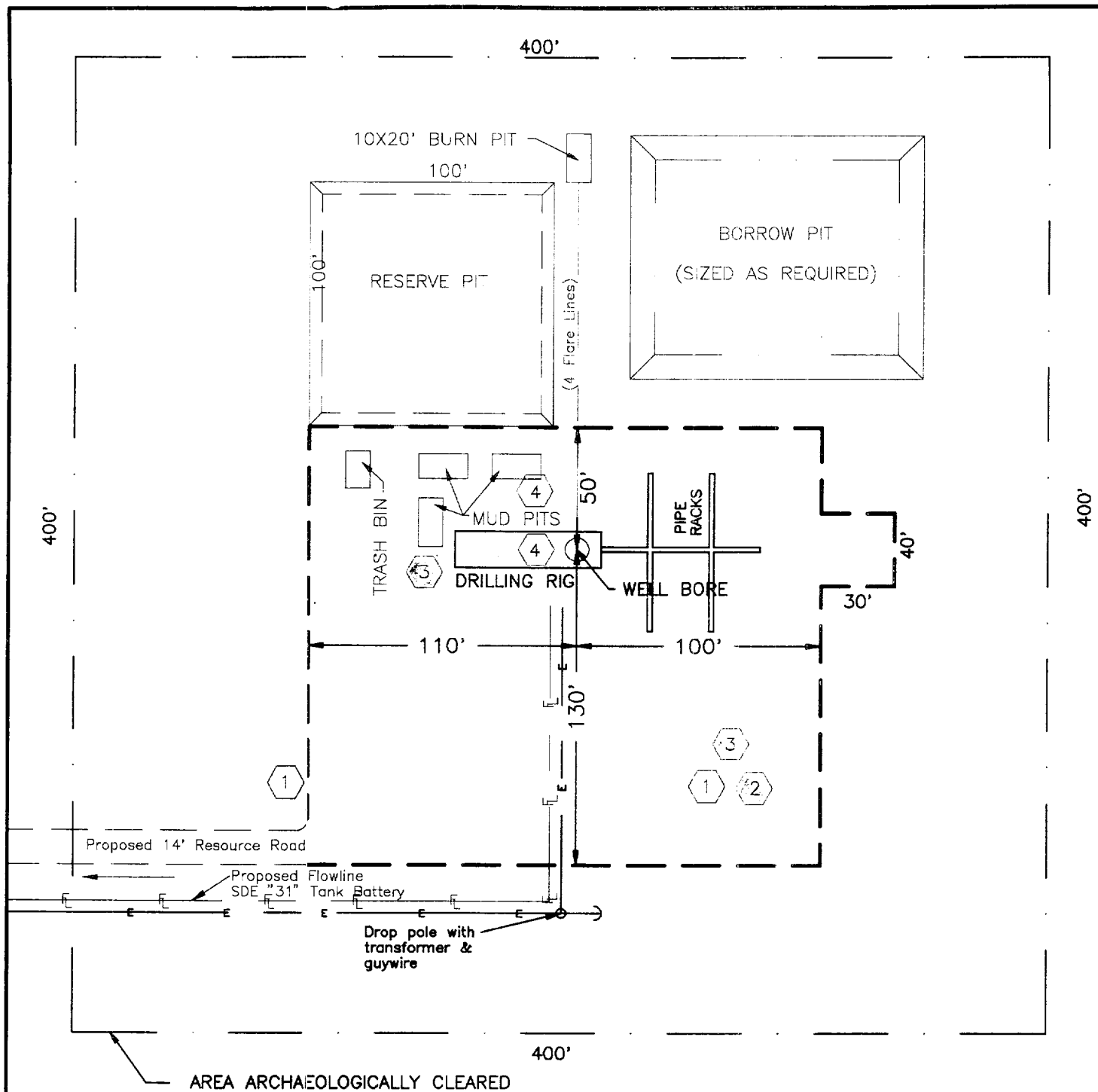
Date: November 15, 1996

C. Wade Howard

Checked by: D. M. Ballew

Sheet: 6 of 8





# H<sub>2</sub>S DRILLING OPERATION PLAN



Briefing Station



H<sub>2</sub>S Safety Trailer



Windsocks



H<sub>2</sub>S Detectors, Shale Shaker,  
Rotating Head,  
Rig Floor

Prevailing Wind from the South

## EXHIBIT "B" DRILLING RIG LAYOUT

### **TEXACO EXPLORATION AND PRODUCTION INC.**

SDE "31" Federal No. 15  
Located 660' FSL & 2310' FEL, Section 31,  
T-23-S, R-32-E, NMPM, Lea County, NM

Drawn by: D. M. Ballew

Scale: 1" = 60'

Date: November 15, 1995

C. WADE HOWARD

Checked by: J. S. Piper

Sheet 7 of 8

DISTRICT 1  
P. O. Box 1980, Hobbs, NM 88240

DISTRICT II  
P. O. Drawer DD, Artesia, NM 88210

DISTRICT III  
1000 Rio Brazos Rd., Aztec, NM 87410

DISTRICT IV  
P. O. Box 2088, Santa Fe, NM 87504-2088

State of New Mexico  
Energy, Minerals and Natural Resources Department

OIL CONSERVATION DIVISION

P.O. Box 2088  
Santa Fe, NM 87504-2088

Form C-102  
Revised February 10, 1994

Instructions on back

Submit to Appropriate District Office

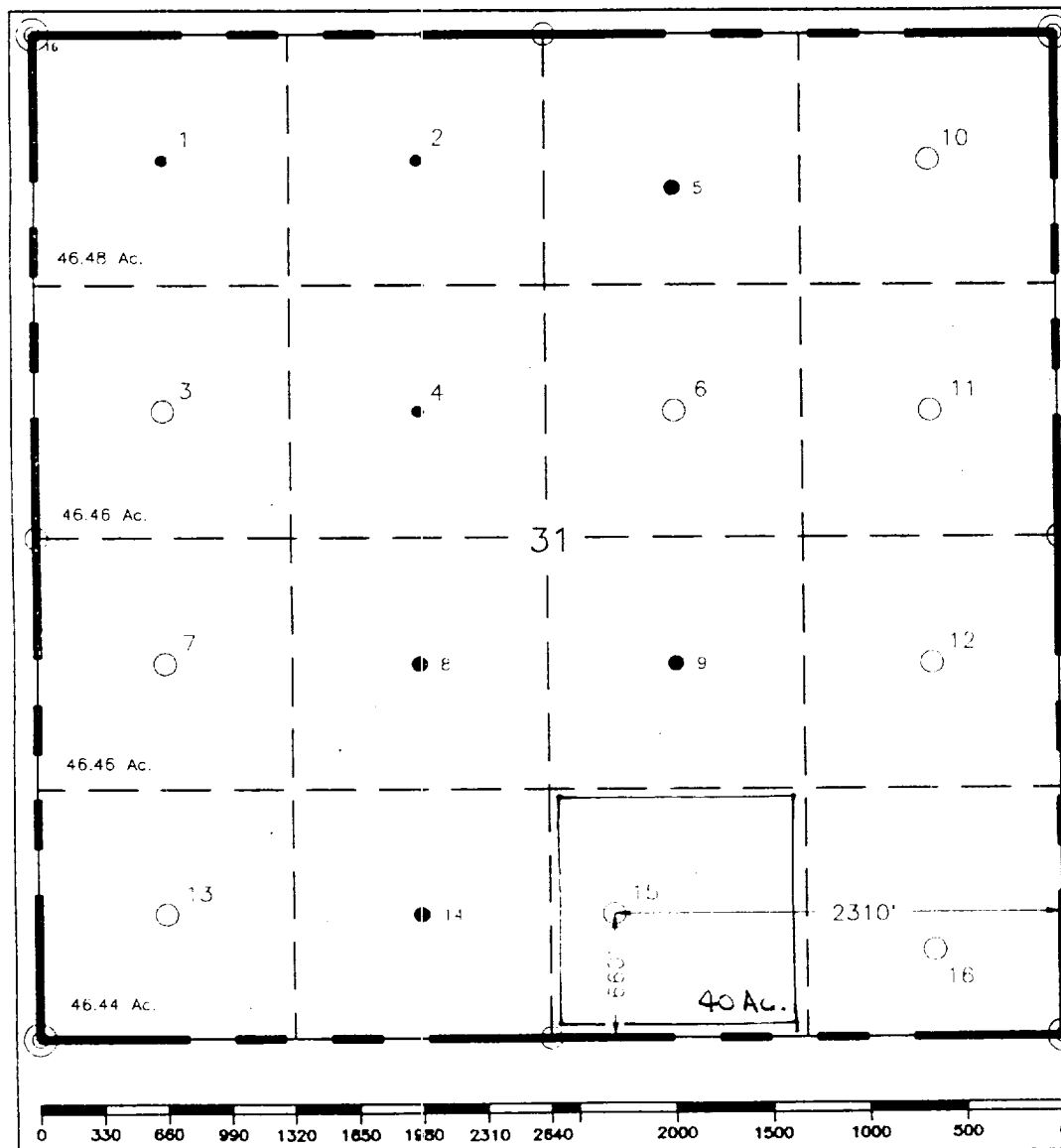
State Lease-4 copies  
Fee Lease-3 copies

☐ AMENDED REPORT

WELL LOCATION AND ACREAGE DEDICATION PLAT

<sup>1</sup> API Number 30-025-32917		<sup>2</sup> Pool Code 53805		<sup>3</sup> Pool Name SAND DUNES SOUTH BONE SPRINGS					
<sup>4</sup> Property Code 15704		<sup>5</sup> Property Name SDE "31" FEDERAL				<sup>6</sup> Well Number 15			
<sup>7</sup> OGRID No. 22351		<sup>8</sup> Operator Name TEXACO EXPLORATION & PRODUCTION, INC.				<sup>9</sup> Elevation 3583'			
<sup>10</sup> Surface Location									
UL or lot no.	Section	Township	Range	Lot Idn	Feet from the	North/South line	Feet from the	East/West line	<sup>7</sup> County
0	31	23-S	32-E		660'	South	2310'	East	Lea
<sup>11</sup> Bottom Hole Location If Different From Surface									
UL or lot no.	Section	Township	Range	Lot Idn	Feet from the	North/South line	Feet from the	East/West line	<sup>7</sup> County
<sup>12</sup> Dedicated Acres 40		<sup>13</sup> Joint or Infill		<sup>14</sup> Consolidation Code		<sup>15</sup> Order No.			

NO ALLOWABLE WILL BE ASSIGNED TO THIS COMPLETION UNTIL ALL INTERESTS HAVE BEEN CONSOLIDATED  
OR A NON-STANDARD UNIT HAS BEEN APPROVED BY THE DIVISION.

	<sup>16</sup> OPERATOR CERTIFICATION I hereby certify that the information contained herein is true and complete to the best of my knowledge and belief.
	Signature <i>C. Wade Howard</i>
	Printed Name C. Wade Howard
	Position Engineer's Assistant
	Company Texaco Expl. & Prod. Inc.
	Date November 20, 1996
	<sup>17</sup> SURVEYOR CERTIFICATION I hereby certify that the well location shown on this plat was plotted from field notes of actual surveys made by me or under my supervision and that the same is true and correct to the best of my knowledge and belief.
	Date Surveyed November 14, 1996
	Signature & Seal of Professional Surveyor <i>John S. Piper</i>
	Certificate No. 7254 John S. Piper
Sheet 8 of 8	