

DISTRICT I
P. O. Box 1980, Hobbs, NM 88240

DISTRICT II
P. O. Drawer DD, Artesia, NM 88210

DISTRICT III
1000 Rio Brazos Rd., Aztec, NM 87410

DISTRICT IV
P. O. Box 2088, Santa Fe, NM 87504-2088

State of New Mexico
Energy, Minerals and Natural Resources Department

OIL CONSERVATION DIVISION

PO Box 2088
Santa Fe, NM 87504-2088

Form C-102
Revised February 10, 1994

Instructions on back

Submit to Appropriate District Office

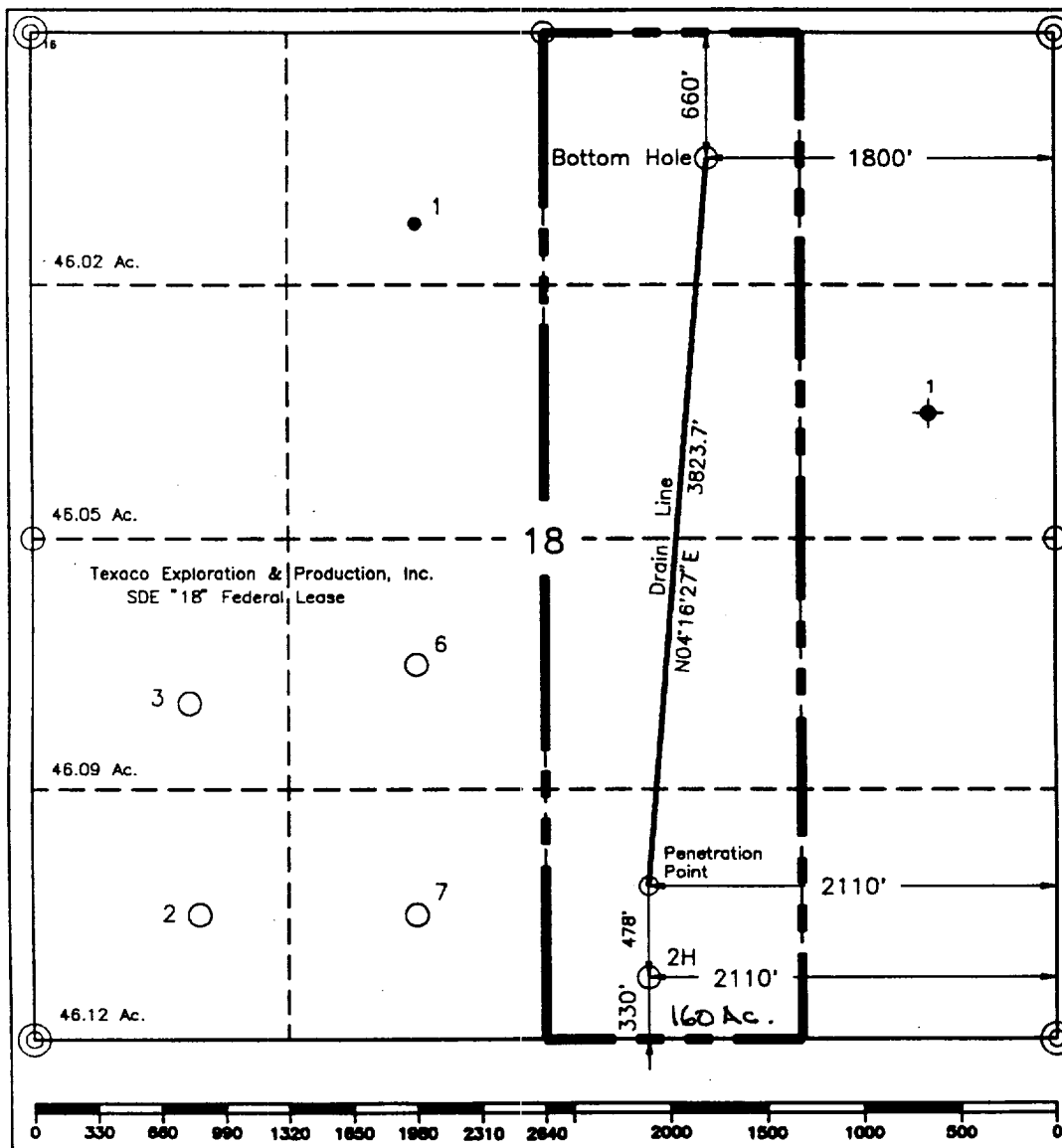
State Lease-4 copies
Fee Lease-3 copies

☐ AMENDED REPORT

WELL LOCATION AND ACREAGE DEDICATION PLAT

1 API Number		2 Pool Code		3 SAND DUNES Pool Name		EAST SAND DUNES			
BRUSHY CANYON, BONE SPRINGS,						DELAWARE			
4 Property Code 17325		5 Property Name SAND "18" FEDERAL COM				6 Well Number 2H			
7 OGRID No. 22351		8 Operator Name TEXACO EXPLORATION & PRODUCTION, INC.				9 Elevation 3643'			
10 Surface Location									
UL or lot no. 0	Section 18	Township 23-S	Range 32-E	List Idn	Feet from the 330'	North/South line South	Feet from the 2110'	East/West line East	County Lea
11 Bottom Hole Location If Different From Surface									
UL or lot no. B	Section 18	Township 23-S	Range 32-E	List Idn	Feet from the 660'	North/South line North	Feet from the 1800'	East/West line East	County Lea
12 Dedicated Acres 160		13 Joint or Infill		14 Consolidation Code		15 Order No.			

NO ALLOWABLE WILL BE ASSIGNED TO THIS COMPLETION UNTIL ALL INTERESTS HAVE BEEN CONSOLIDATED
OR A NON-STANDARD UNIT HAS BEEN APPROVED BY THE DIVISION.



16 OPERATOR CERTIFICATION

I hereby certify that the information contained herein is true and complete to the best of my knowledge and belief.

Signature

C. Wade Howard

Printed Name

C. Wade Howard

Position

Engineer's Assistant

Company

Texaco Expl. & Prod. Inc.

Date

February 5, 1996

17 SURVEYOR CERTIFICATION

I hereby certify that the well location shown on this plat was plotted from field notes of actual surveys made by me or under my supervision, and that the same is true and correct to the best of my knowledge and belief.

Date Surveyed

January 22, 1996

Signature & Seal of Professional Surveyor

John S. Piper

Certificate No.

7254 John S. Piper

Sheet 8 of 8