

To Bill

From

DENNA 8/29/95

Energy & Minerals Department

OIL CONSERVATION DIVISION

P O Box 1980

Hobbs NM 88241

Telephone Number (505) 393-6161

☐ **For Your Files**

☐ **Prepare a Reply for My
Signature**

☐ **For Your Review and
Return**

☐ **For Your Information**

☐ **For Your Handling**

☐ **For Your Approval**

☒ **As Per Your Request**

☐ **For Your Signature**

☒ **Please Advise**

☐ **For Your Attention**

3 pgs

8/29/95
Bill
on NSL gave verbal

UNITED STATES
DEPARTMENT OF THE INTERIOR
BUREAU OF LAND MANAGEMENT

APPLICATION FOR PERMIT TO DRILL, DEEPEN, OR PLUG BACK

1a. TYPE OF WORK

DRILL ☒

DEEPEN ☐

PLUG BACK ☐

b. TYPE OF WELL

OIL WELL ☐

GAS WELL ☒

OTHER

SINGLE ZONE ☐

MULTIPLE ZONE ☐

2. NAME OF OPERATOR

AMERADA HESS CORPORATION ATTN: ONSHORE DRILLING SERVICES

3. ADDRESS OF OPERATOR

P.O. BOX 2040 HOUSTON, TEXAS 77252

4. LOCATION OF WELL (Report location clearly and in accordance with any State requirements.)*

At surface

1930' FNL & 660' FEL

At proposed prod. zone

UNORTHODOX

LOCATION:

Subject to

Like Approval

By State

SAME

14. DISTANCE IN MILES AND DIRECTION FROM NEAREST TOWN OR POST OFFICE*

24 MILES SOUTHWEST OF EUNICE, NM.

15. DISTANCE FROM PROPOSED*

LOCATION TO NEAREST

PROPERTY OR LEASE LINE, FT.

(Also to nearest drlg. unit line, if any)

660'

16. NO. OF ACRES IN LEASE

628.62

17. NO. OF ACRES ASSIGNED TO THIS WELL

628.62

18. DISTANCE FROM PROPOSED LOCATION* TO NEAREST WELL, DRILLING, COMPLETED, OR APPLIED FOR, ON THIS LEASE, FT.

3000'

19. PROPOSED DEPTH

17,600'

20. ROTARY OR CABLE TOOLS

ROTARY

21. ELEVATIONS (Show whether DF, RT, GR, etc.)

GR. 3456'

Captain Controlled Water Basin

22. APPROX. DATE WORK WILL START*

08-31-95

23.

PROPOSED CASING AND CEMENTING PROGRAM

SIZE OF HOLE	SIZE OF CASING	WEIGHT PER FOOT	SETTING DEPTH	QUANTITY OF CEMENT
26"	20"	94#	900'	1545 SX (CIRC. TO SURFACE)
17-1/2"	13-3/8"	68# - 72#	4800'	2800 SX (CIRC. TO SURFACE)
12-1/4"	9-7/8" & 9-5/8"	62.8# & 53.5#	12,000'	835 SX
8-1/2"	7-5/8" LINER	39#	14,400'	380 SX
6-1/2"	5" LINER	18#	17,600'	300 SX

SEE EXHIBIT "A" FOR A LISTING OF ATTACHED EXHIBITS DESCRIBING PROPOSED PROGRAMS
BOND COVERAGE PURSUANT TO 43 CFR 3104 FOR LEASE ACTIVITIES IS BEING PROVIDED BY
AMERADA HESS UNDER NATIONWIDE BOND #75-73-25. CONFIDENTIALITY IS REQUESTED FOR
THE MAXIMUM PERIOD OF TIME.

Approved/Checked by
General Requirements
Special Requirements
Attached

RECEIVED
AUG 11 11 26 AM '95
CABLE AREA

IN ABOVE SPACE DESCRIBE PROPOSED PROGRAM: If proposal is to deepen or plug back, give data on present productive zone and proposed new productive zone. If proposal is to drill or deepen directionally, give pertinent data on subsurface locations and measured and true vertical depths. Give blowout preventer program, if any.

24.

SIGNED

Mike Jumper

TITLE ADM. SUPERVISOR DRLG. SVS.

DATE 08-09-95

(This space for Federal or State office use)

PERMIT NO.

APPROVAL DATE

APPROVED BY

Uplanda Vey

TITLE

DATE

8-25-95

CONDITIONS OF APPROVAL, IF ANY:

*See Instructions On Reverse Side

Title 18 U.S.C. Section 1001, makes it a crime for any person knowingly and willfully to make to any department or agency of the United States any false, fictitious or fraudulent statements or representations as to any matter within its jurisdiction.

DISTRICT II
P.O. Drawer ED, Artesia, NM 88210DISTRICT III
1000 Rio Brazos Rd., Aztec, NM 87410

OIL CONSERVATION DIVISION

P.O. Box 2088

Santa Fe, New Mexico 87504-2088

☐ AMENDED REPORT

WELL LOCATION AND ACREAGE DEDICATION PLAT

API Number	Pool Code 96063	Pool Name ELLENBURGER (WILDCAT)
Property Code 15703	Property Name BELL LAKE FEDERAL UNIT	Well Number 3
GRID No. 495	Operator Name AMERADA HESS CORPORATION	Elevation 3456'

Surface Location

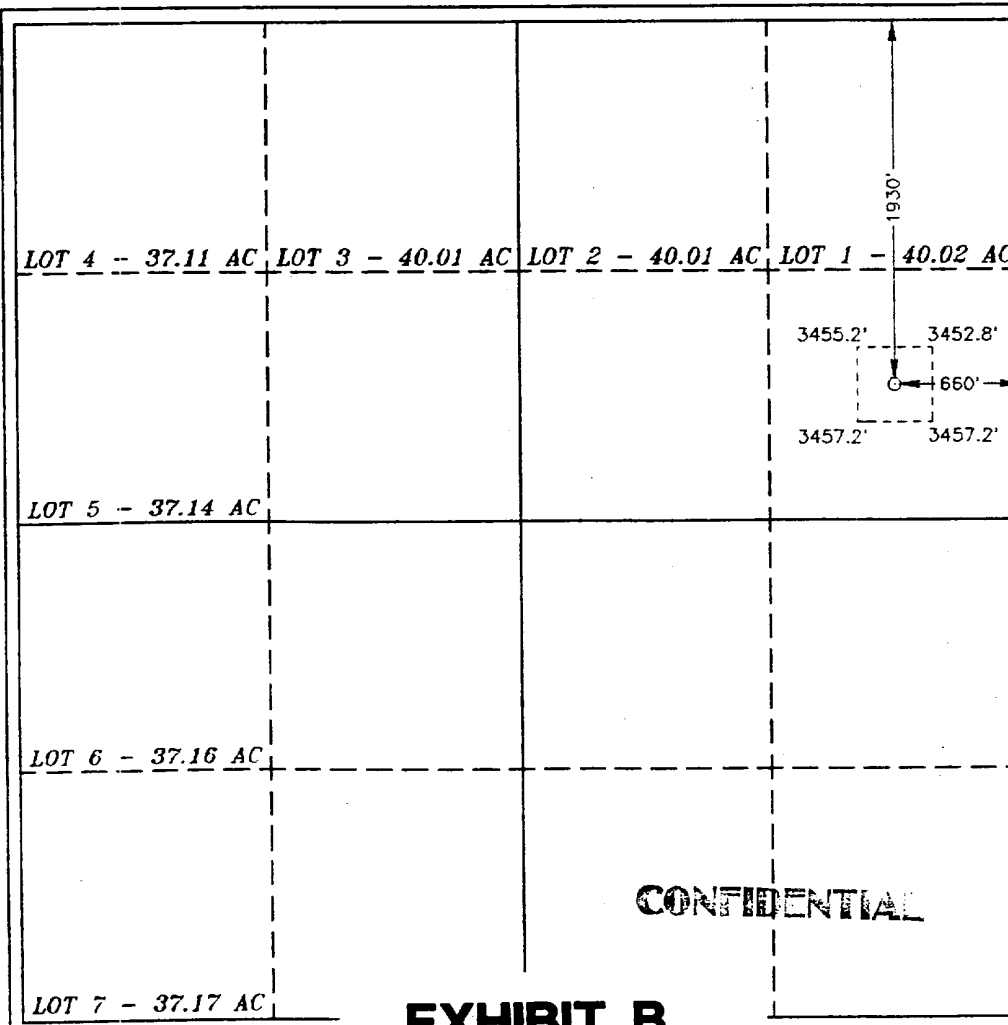
UL or lot No.	Section	Township	Range	Lot Idn	Feet from the	North/South line	Feet from the	East/West line	County
H	6	23 S	34 E		1930	NORTH	660	EAST	LEA

Bottom Hole Location If Different From Surface

UL or lot No.	Section	Township	Range	Lot Idn	Feet from the	North/South line	Feet from the	East/West line	County

Dedicated Acres 628.62	Joint or Infill	Consolidation Code	Order No. R-10427
---------------------------	-----------------	--------------------	----------------------

NO ALLOWABLE WILL BE ASSIGNED TO THIS COMPLETION UNTIL ALL INTERESTS HAVE BEEN CONSOLIDATED
OR A NON-STANDARD UNIT HAS BEEN APPROVED BY THE DIVISION



OPERATOR CERTIFICATION

I hereby certify the the information
contained herein is true and complete to the
best of my knowledge and belief.

Mike Jumper
Signature

MIKE JUMPER
Printed Name

ADM. SUPVSR. DRLG. SVS.
Title

08-10-95
Date

SURVEYOR CERTIFICATION

I hereby certify that the well location shown
on this plat was plotted from field notes of
actual surveys made by me or under my
supervision, and that the same is true and
correct to the best of my belief.

July 17, 1995
Date Surveyed

Gary L. Jones
Signature & Seal of
Professional Surveyor

7977
Professional Surveyor

7977
Professional Surveyor

7977
Professional Surveyor

7977
Professional Surveyor

Gary L. Jones

CONFIDENTIAL

EXHIBIT B

TRANSACTION REPORT

P. 01

AUG-29-95 TUE 9:44 AM

FOR: OCD HOBBS

15053930720

DATE	START	RECEIVER	TX TIME	PAGES	TYPE	NOTE
AUG-29	9:42 AM	15059836043	2' 00"	3	SEND	OK