

District I
PO Box 1980, Hobbs, NM 88241-1980
District II
PO Drawer DD, Artesia, NM 88211-0719
District III
1000 Rio Brazos Rd., Aztec, NM 87410
District IV
PO Box 2088, Santa Fe, NM 87504-2088

State of New Mexico
Energy, Minerals & Natural Resources Department

OIL CONSERVATION DIVISION
PO Box 2088
Santa Fe, NM 87504-2088

Form C-101
Revised February 10, 1994
Instructions on back
Submit to Appropriate District Office
State Lease - 6 Copies
Fee Lease - 5 Copies

☐ AMENDED REPORT

APPLICATION FOR PERMIT TO DRILL, RE-ENTER, DEEPEN, PLUGBACK, OR ADD A ZONE

¹ Operator Name and Address. Santa Fe Energy Resources, Inc. 550 W. Texas, Suite 1330 Midland, TX 79701		¹ OGRID Number 20305
		¹ API Number 30-0 25-33193
¹ Property Code 17198	¹ Property Name Falcon "32" State	¹ Well No. 2

⁷ Surface Location

UL or lot no.	Section	Township	Range	Lot Idn	Feet from the	North/South line	Feet from the	East/West line	County
K	32	23-S	32E		1980	South	1650	West	Lea

⁸ Proposed Bottom Hole Location If Different From Surface

UL or lot no.	Section	Township	Range	Lot Idn	Feet from the	North/South line	Feet from the	East/West line	County
¹ Proposed Pool 1 Mesa Verde Delaware/Bone Spring					¹ Proposed Pool 2 South Sand Dunes				

¹¹ Work Type Code N	¹¹ Well Type Code O	¹¹ Cable/Rotary R	¹¹ Lease Type Code S	¹¹ Ground Level Elevation 3634
¹¹ Multiple No	¹¹ Proposed Depth 8850	¹¹ Formation Bone Spring	¹¹ Contractor To be determined	¹¹ Spud Date 12-15-95

²¹ Proposed Casing and Cement Program

Hole Size	Casing Size	Casing weight/foot	Setting Depth	Sacks of Cement	Estimated TOC
17 1/2"	13 3/8"	48.0	600'	600	surface
11"	8 5/8"	32.0	4600'	1300	surface
7 7/8"	5 1/2"	17.0	8850'	800	4400'

¹² Describe the proposed program. If this application is to DEEPEN or PLUG BACK give the data on the present productive zone and proposed new productive zone. Describe the blowout prevention program, if any. Use additional sheets if necessary.

Rig up rotary tools. Set 13 3/8" casing @ 600', WOC 12 hrs, NU annular preventor and test casing to 600 psi. Set 8 5/8" casing @ 4600', WOC 12 hrs. and NU double ram BOP w/annular. Test casing to 1500 psi. Drill to a TD of $\pm 8850'$.

¹³ I hereby certify that the information given above is true and complete to the best of my knowledge and belief. Signature: <i>James P. Stinson</i> Printed Name: James P. Stinson Title: Agent for Santa Fe Energy Date: 11-21-95		OIL CONSERVATION DIVISION Approved by: ORIGINAL SIGNED BY JERRY SEXTON Title: DISTRICT SUPERVISOR Approval Date: NOV 27 1995 Expiration Date: Conditions of Approval: Attached <input type="checkbox"/>	
--	--	---	--

Permit Expires 6 Months From Approval
Date Unless Drilling Underway.

P. O. Box 1980
Tobbs, NM 88241-1980

STATE OF NEW MEXICO
Energy, Minerals, and Natural Resources Department

Revised 02-10-94

Instructions on back

DISTRICT II
P. O. Drawer DD
Artesia, NM 88211-0719

DISTRICT III
1000 Rio Brazos Rd.
Aztec, NM 87410

DISTRICT IV
P. O. Box 2088
Santa Fe, NM 87507-2088

OIL CONSERVATION DIVISION
P. O. Box 2088
Santa Fe, New Mexico 87504-2088

Submit to the Appropriate
District Office
State Lease - 4 copies
Fee Lease - 3 copies

☐ AMENDED REPORT

WELL LOCATION AND ACREAGE DEDICATION PLAT

¹ API Number 30-025-33193	² Pool Code 53805	³ Pool Name South Sand Dunes Mesa Verde Delaware/Bone Spring
⁴ Property Code 17198	⁵ Property Name FALCON 32 STATE	⁶ Well Number 2
⁷ OGRID No. 20305	⁸ Operator Name SANTA FE ENERGY RESOURCES, INC.	⁹ Elevation 3634'

¹⁰ SURFACE LOCATION

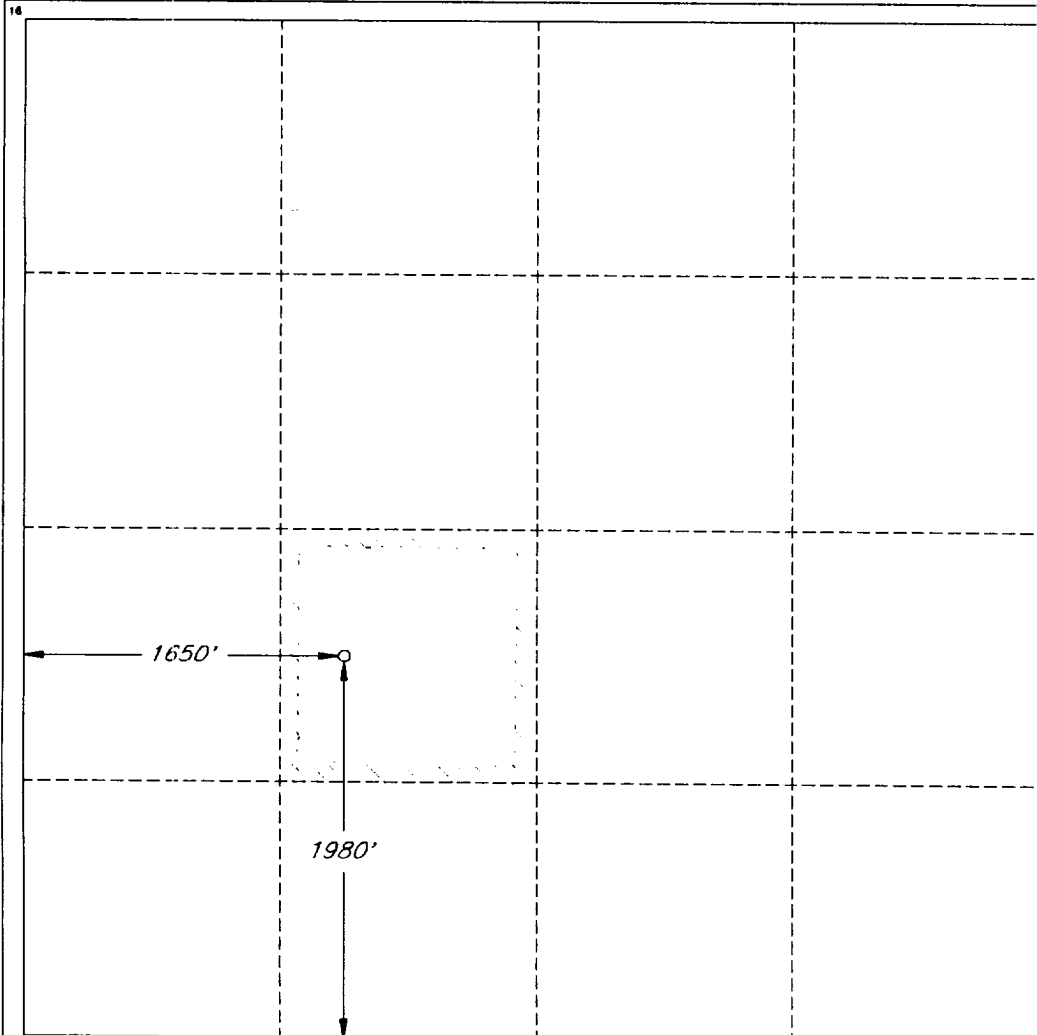
UL or lot no.	Section	Township	Range	Lot Ida	Feet from the	North/South line	Feet from the	East/West line	County
K	32	23 SOUTH	32 EAST, N.M.P.M.		1980'	SOUTH	1650'	WEST	LEA

"BOTTOM HOLE LOCATION IF DIFFERENT FROM SURFACE

UL or lot no.	Section	Township	Range	Lot Ida	Feet from the	North/South line	Feet from the	East/West line	County

¹² Dedicated Acres 40	¹³ Joint or Infill	¹⁴ Consolidation Code	¹⁵ Order No.
-------------------------------------	-------------------------------	----------------------------------	-------------------------

NO ALLOWABLE WELL BE ASSIGNED TO THIS COMPLETION UNTIL ALL INTERESTS HAVE BEEN
CONSOLIDATED OR A NON-STANDARD UNIT HAS BEEN APPROVED BY THE DIVISION



OPERATOR CERTIFICATION

I hereby certify that the information
contained herein is true and complete
to the best of my knowledge and belief.

Signature <i>James P. "Phil" Stinson</i>
Printed Name James P. "Phil" Stinson
Title Agent for Santa Fe Energy
Date 11-29-95

SURVEYOR CERTIFICATION

I hereby certify that the well
location shown on this plat was
plotted from field notes of actual
surveys made by me or under
my supervision, and that the
same is true and correct to the
best of my belief.

Date of Survey NOVEMBER 15, 1995
Signature and Seal of Professional Surveyor <i>V. Lynn Bezner</i>
Certification V. L. BEZNER R.P.S. #7920
JOB #42467 / 47 SW / VHB