

DISTRICT I

P.O. Box 1980, Hobbs, NM 88241-1980

DISTRICT II

P.O. Box Drawer DD, Artesia, NM 88211-0719

DISTRICT III

1000 Rio Brazos Rd., Aztec, NM 87410

DISTRICT IV

P.O. Box 2088, Santa Fe, NM 87504-2088

State of New Mexico

Energy, Minerals and Natural Resources Department

Form C-101

Revised February 10, 1994

Instructions on back

Submit to Appropriate District Office

State Lease - 6 Copies

Fee Lease - 5 Copies

☐ AMENDED REPORT

OIL CONSERVATION DIVISION

P.O. Box 2088

Santa Fe, New Mexico 87504-2088

APPLICATION FOR PERMIT TO DRILL, RE-ENTER, DEEPEN, PLUGBACK, OR ADD A ZONE

¹ Operator Name and Address TEXACO EXPLORATION & PRODUCTION INC. P.O. Box 3109, Midland Texas 79702		² OGRID Number 022351
		³ API Number 30-225-33376
⁴ Property Code 10886	⁵ Property Name BAKER 'B'	⁶ Well No. 18

⁷ Surface Location

UI or lot no.	Section	Township	Range	Lot.Idn	Feet From The	North/South Line	Feet From The	East/West Line	County
K	10	22-S	37-E		1650	SOUTH	1700	WEST	LEA

⁸ Proposed Bottom Hole Location If Different From Surface

UI or lot no.	Section	Township	Range	Lot.Idn	Feet From The	North/South Line	Feet From The	East/West Line	County
⁹ Proposed Pool 1 DRINKARD					¹⁰ Proposed Pool 2 WANTZ ABO				

¹¹ Work Type Code N	¹² WellType Code O	¹³ Rotary or C.T. ROTARY	¹⁴ Lease Type Code P	¹⁵ Ground Level Elevation 3408'
¹⁶ Multiple No	¹⁷ Proposed Depth 7200'	¹⁸ Formation DRINKARD/ABO	¹⁹ Contractor NABORS	²⁰ Spud Date 5/15/96

²¹ Proposed Casing and Cement Program

SIZE OF HOLE	SIZE OF CASING	WEIGHT PER FOOT	SETTING DEPTH	SACKS OF CEMENT	EST. TOP
11	8 5/8	24#	1200'	500 SACKS	SURFACE
7 7/8	5 1/2	17#	7200'	1600 SACKS	SURFACE

²² Describe the proposed program. If this application is to DEEPEN or PLUG BACK give the data on the present productive zone and proposed new productive zone. Describe the blowout prevention program, if any. Use additional sheets if necessary.

CEMENTING PROGRAM:

SURFACE CASING - 300 SACKS CLASS C W/ 4% GEL, 2% CACL₂ (13.5 PPG, 1.74 CF/S, 9.11 GW/S). F/B 200 SACKS CLASS C W/ 2% CACL₂ (14.8 PPG, 1.34 CF/S, 6.3 GW/S).

PRODUCTION CASING - 1100 SACKS 35/65 POZ CLASS H W/ 6% GEL, 5% SALT, 1/4# FLOCELE (12.4 PPG, 2.14 CF/S, 11.9 GW/S). F/B 500 SACKS 50/50 POZ H W/ 2% GEL, 5% SALT, 1/4# FC (14.2 PPG, 1.35 CF/S, 6.3 GW/S).

THERE ARE NO OTHER OPERATORS IN THIS QUARTER QUARTER SECTION.

Permit Expires 1 Year From Approval
Date Unless Drilling Underway

²³ I hereby certify that the rules and regulations of the Oil Conservation Division have been complied with and that the information given above is true and complete to the best of my knowledge and belief.

Signature

C. Wade Howard

Printed Name

C. Wade Howard

Title

Eng. Assistant

Date

4/8/96

Telephone

688-4606

OIL CONSERVATION DIVISION

Approved By:

APPROVAL SIGNED BY JERRY TEXADON
DISTRICT I SUPERVISOR

Title:

Approval Date:

APR 10 1996

Expiration Date:

Conditions of Approval:

Attached ☐

DISTRICT I
P. O. Box 1980, Hobbs, NM 88240

DISTRICT II
P. O. Drawer DD, Artesia, NM 88210

DISTRICT III
1000 Rio Brazos Rd., Aztec, NM 87410

DISTRICT IV
P. O. Box 2088, Santa Fe, NM 87504-2088

State of New Mexico
Energy, Minerals and Natural Resources Department

Form C-102
Revised February 10, 1994

Instructions on back

OIL CONSERVATION DIVISION

PO Box 2088
Santa Fe, NM 87504-2088

Submit to Appropriate District Office

State Lease-4 copies
Fee Lease-3 copies

☐ AMENDED REPORT

WELL LOCATION AND ACREAGE DEDICATION PLAT

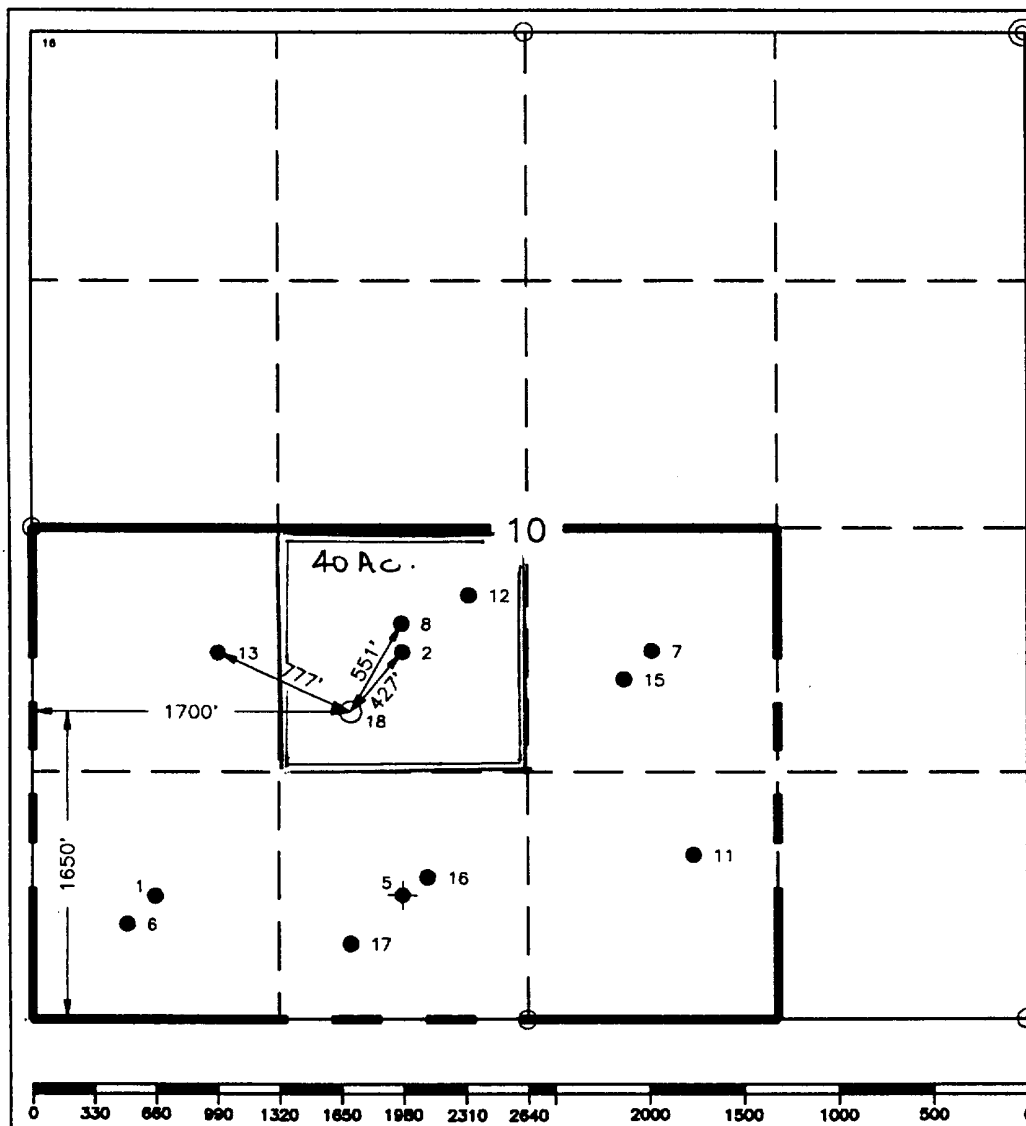
¹ API Number 25-33376		² Pool Code 18190/62700		³ Pool Name Drinkard & Wantz ABO	
⁴ Property Code 10886		⁵ Property Name Baker "B"			⁶ Well Number 18
⁷ GRID No. 22351		⁸ Operator Name TEXACO EXPLORATION & PRODUCTION, INC.			⁹ Elevation 3408'

¹⁰ Surface Location									
UL or lot no.	Section	Township	Range	Lot Idn	Feet from the	North/South line	Feet from the	East/West line	⁷ County
K	10	22-S	37-E		1650'	South	1700'	West	Lea

¹¹ Bottom Hole Location If Different From Surface									
UL or lot no.	Section	Township	Range	Lot Idn	Feet from the	North/South line	Feet from the	East/West line	⁷ County

¹² Dedicated Acres 40	¹³ Joint or Infill	¹⁴ Consolidation Code	¹⁵ Order No.
-------------------------------------	-------------------------------	----------------------------------	-------------------------

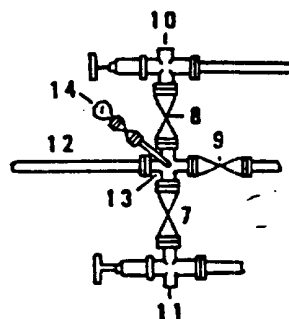
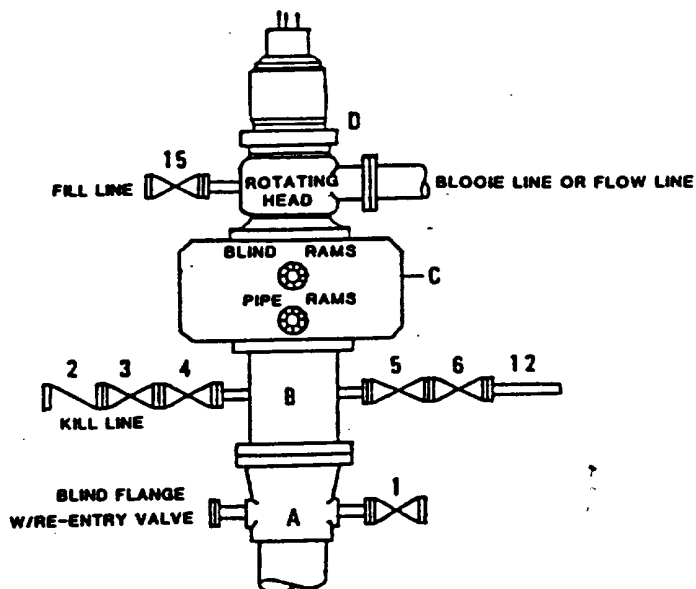
NO ALLOWABLE WILL BE ASSIGNED TO THIS COMPLETION UNTIL ALL INTERESTS HAVE BEEN CONSOLIDATED
OR A NON-STANDARD UNIT HAS BEEN APPROVED BY THE DIVISION.



¹ OPERATOR CERTIFICATION	
I hereby certify that the information contained herein is true and complete to the best of my knowledge and belief.	
Signature	<i>C. Wade Howard</i>
Printed Name	C. Wade Howard
Position	Engineer's Assistant
Company	Texaco Expl. & Prod. Inc.
Date	April 9, 1996
¹⁸ SURVEYOR CERTIFICATION	
I hereby certify that the well location shown on this plat was plotted from field notes of actual surveys made by me or under my supervision, and that the same is true and correct to the best of my knowledge and belief.	
Date Surveyed	April 2, 1996
Signature & Seal of Professional Surveyor	<i>John S. Piper</i>
Certificate No.	7254 John S. Piper
Sheet	

**DRILLING CONTROL
CONDITION II-B 3000 WP
FOR AIR DRILLING OR
WHERE NITROGEN OR AIR BLOWS ARE EXPECTED**

H₂S TRIM REQUIRED
YES _____ NO _____



DRILLING CONTROL

MATERIAL LIST - CONDITION II - B

- | | |
|----------------|---|
| A | Texaco Wellhead |
| B | 3000# W.P. drilling spool with a 2" minimum flanged outlet for kill line and 3" minimum flanged outlet for choke line. |
| C | 3000# W.P. Dual ram type preventer, hydraulic operated with 1" steel, 3000# W.P. control lines (where sub-structure height is adequate, 2 - 3000# W.P. single ram type preventers may be utilized). |
| D | Rotating Head with fill up outlet and extended Blooe Line. |
| 1,3,4,
7,8, | 2" minimum 3000# W.P. flanged full opening steel gate valve, or Halliburton Lo Torc Plug valve. |
| 2 | 2" minimum 3000# W.P. back pressure valve. |
| 5,6,9 | 3" minimum 3000# W.P. flanged full opening steel gate valve, or Halliburton Lo Torc Plug valve. |
| 12 | 3" minimum schedule 80, Grade "B", seamless line pipe. |
| 13 | 2" minimum x 3" minimum 3000# W.P. flanged cross. |
| 10,11 | 2" minimum 3000# W.P. adjustable choke bodies. |
| 14 | Cameron Mud Gauge or equivalent (location optional in choke line). |
| 15 | 2" minimum 3000# W.P. flanged or threaded full opening steel gate valve, or Halliburton Lo Torc Plug valve. |



TEXACO, INC.
MIDLAND DIVISION
MIDLAND, TEXAS



SCALE	DATE	EST. NO.	DWG. NO.
DRAWN BY			
CHECKED BY			
APPROVED BY			

EXHIBIT C

10/8/01



Receivable
Hobbs
OCD