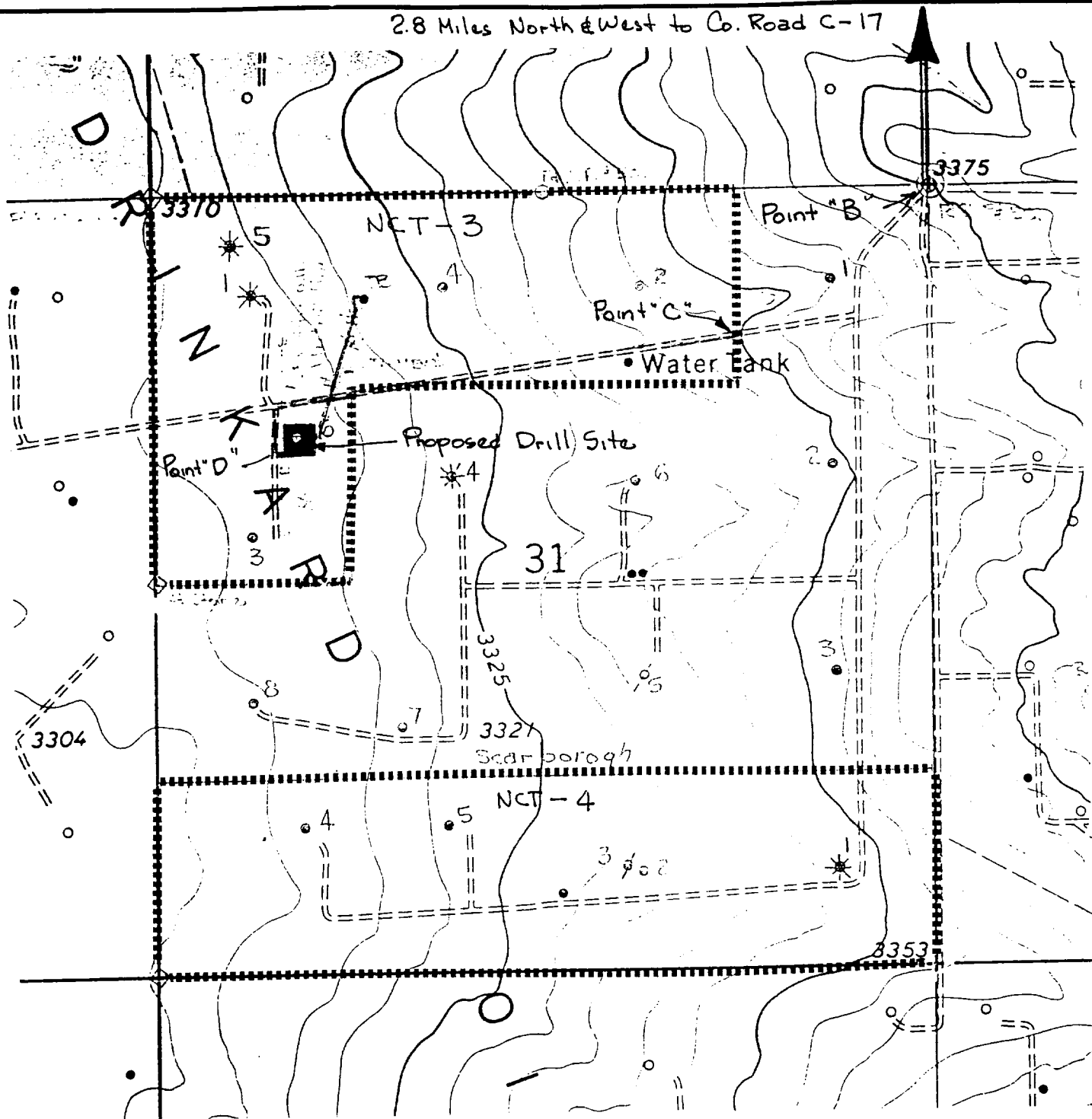


2.8 Miles North & West to Co. Road C-17



### LEGEND OF SYMBOLS

- = Access Road (Yellow)
- = Resource Road Federal Land (Pink)
- = Resource Road Private Land (Blue)
- = Resource Road on Lease (Brown)
- = Proposed Resource Road (Red)
- = Proposed Electric Line (Orange)
- = Proposed Production Flowline (Green)
- = Staked Well Location
- = Producing Well Location
- = Water Well
- = Found 1" Iron Pipe With Brass Cap
- = Found 2" Iron Pipe With Brass Cap
- = Unit or Lease Boundary

### EXHIBIT "A" ACCESS ROAD AND FACILITIES MAP

### TEXACO EXPLORATION AND PRODUCTION

A. H. BLINEBRY FEDERAL NCT-3 NO. 6  
1650' FNL & 990' FWL, Section 31,  
T-22-S, R-38-E, NMPM, Lea County, NM

Drawn by: J. S. Piper

Scale: 1" = 1000 Feet

Date: September 26, 1996

C. Wade Howard

Checked by: D. M. Ballew

Sheet: 6 of 8