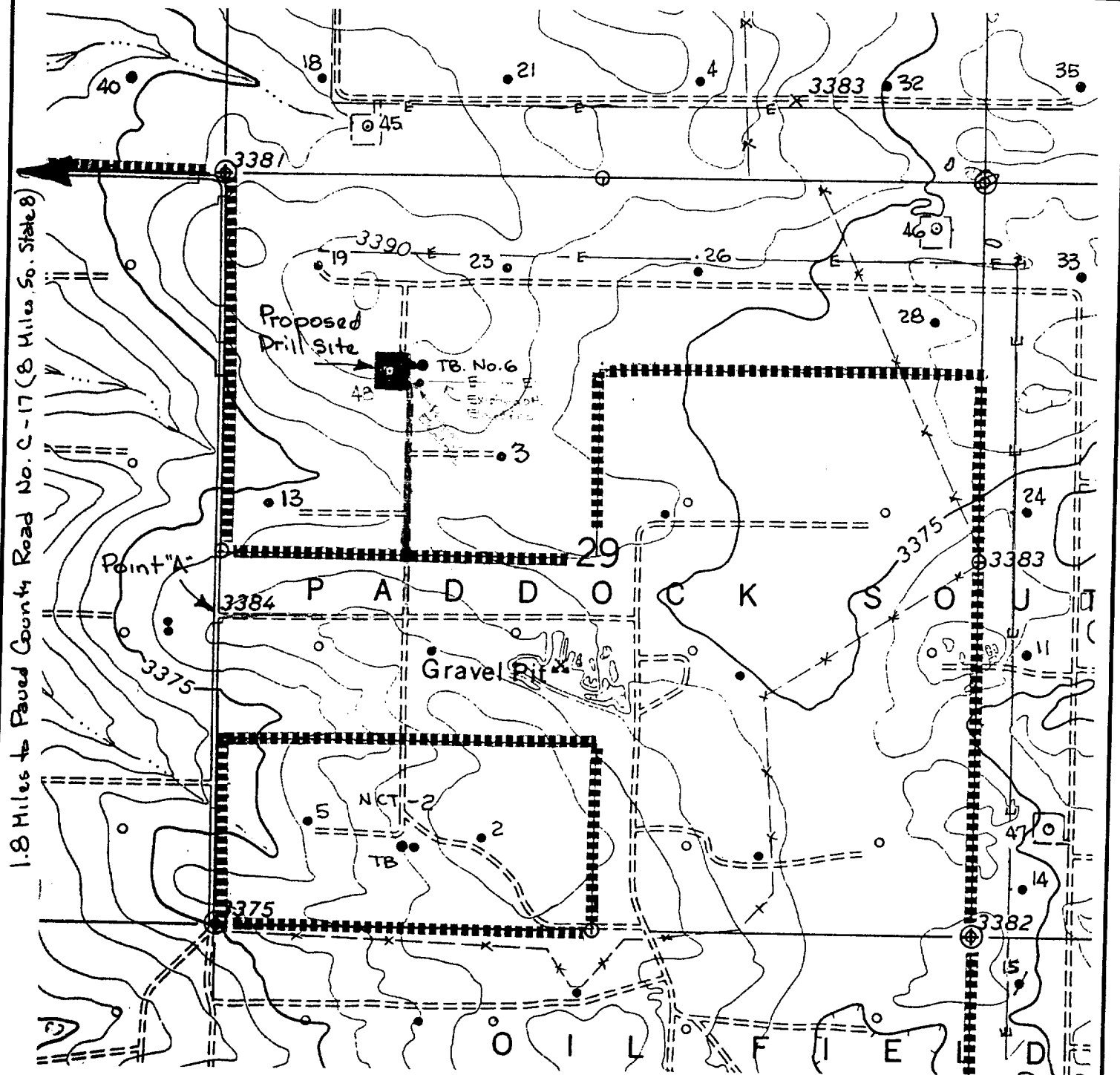


1.8 Miles to Paved County Road No. C-17 (8 Miles So. State 8)



### LEGEND OF SYMBOLS

- = Access Road (Yellow)
- = Resource Road Federal Land (Pink)
- = Resource Road Private Land (Blue)
- = Resource Road on Lease (Brown)
- = Proposed Resource Road (Red)
- = Proposed Electric Line (Orange)
- = Proposed Production Flowline (Green)
- = Staked Well Location
- = Producing Well Location
- = Water Well
- = Found 1" Iron Pipe With Brass Cap
- = Found 2" Iron Pipe With Brass Cap
- = Unit or Lease Boundary

### EXHIBIT "A" ACCESS ROAD AND FACILITIES MAP

### TEXACO EXPLORATION AND PRODUCTION

A. H. BLINEBRY FEDERAL NCT-1 NO. 48  
1330' FNL & 1155' FWL, Section 29,  
T-22-S, R-38-E, NMPM, Lea County, NM

Drawn by: J. S. Piper

Scale: 1" = 1000 Feet

Date: October 8, 1996

C. Wade Howard

Checked by: D. M. Ballew

Sheet: 6 of 8