

UNITED STATES
DEPARTMENT OF THE INTERIOR
BUREAU OF LAND MANAGEMENT

3-20-97-JP
3-18-97 nam

APPLICATION FOR PERMIT TO DRILL OR DEEPEN

1a. TYPE OF WORK

DRILL ☒

DEEPEN ☐

b. TYPE OF WELL

OIL WELL ☒

GAS WELL ☐

OTHER

SINGLE ZONE ☒

MULTIPLE ZONE ☐

2. NAME OF OPERATOR

Burlington Resources Oil & Gas Company

3. ADDRESS AND TELEPHONE NO.

P.O. Box 51810, Midland, TX 79710-1810

915-688-6943

4. LOCATION OF WELL (Report location clearly and in accordance with any State regulations)
At surface

2410' FSL & 1650' FEL

At proposed prod. zone

SUBJECT TO
LIKE APPROVAL
BY STATE

14. DISTANCE IN MILES AND DIRECTION FROM NEAREST TOWN OR POST OFFICE*

41 miles northwest of Jal, New Mexico

15. DISTANCE FROM PROPOSED*

LOCATION TO NEAREST
PROPERTY OR LEASE LINE, FT.
(Also to nearest drilg. unit line, if any)

1650'

16. NO. OF ACRES IN LEASE

240

17. NO. OF ACRES ASSIGNED
TO THIS WELL

40

18. DISTANCE FROM PROPOSED LOCATION*

TO NEAREST WELL, DRILLING, COMPLETED,
OR APPLIED FOR, ON THIS LEASE, FT.

N/A first well

19. PROPOSED DEPTH

9100'

20. ROTARY OR CABLE TOOLS

Rotary

21. ELEVATIONS (Show whether DF, RT, GR, etc.)

3708'

CARLSBAD CONTROLLED WATER BASIN

22. APPROX. DATE WORK WILL START*

Upon Approval

23. PROPOSED CASING AND CEMENTING PROGRAM

SIZE OF HOLE	GRADE, SIZE OF CASING	WEIGHT PER FOOT	SETTING DEPTH	QUANTITY OF CEMENT
12 1/4"	9 5/8" K-55	36#	650' WITNESS	400 SXS CIRCULATE
8 3/4"	7" K-55	23#	4650'	800 SXS CIRCULATE
6 1/8"	4 1/2" K-55	11.6#	9100'	500 SXS

OPER. OGRID NO. 26485

PROPERTY NO. 20747

POOL CODE 17644

EFF. DATE 5/15/97

API NO. 3D-025-33955

Not in Hydrogen Sulfide Area
Not in Designated Potash Area

Have applied for unorthodox location with NMOC.

Contact Person: Donna Williams, 915-688-6943

APPROVAL SUBJECT TO
GENERAL REQUIREMENTS AND
SPECIAL STIPULATIONS
ATTACHED

NSL-3777

IN ABOVE SPACE DESCRIBE PROPOSED PROGRAM: If proposal is to deepen, give data on present productive zone and proposed new productive zone. If proposal is to drill or deepen directionally, give pertinent data on subsurface locations and measured and true vertical depths. Give blowout preventer program, if any.

24.

SIGNED

TITLE Regulatory Compliance

DATE

3/14/97

(This space for Federal or State office use)

PERMIT NO.

APPROVAL DATE

Application approval does not warrant or certify that the applicant holds legal or equitable title to those rights in the subject lease which would entitle the applicant to conduct operations thereon.

CONDITIONS OF APPROVAL, IF ANY:

(ORIG. SGD.) TONY L. FERGUSON

ADM, MINERALS

APPROVED BY

TITLE

DATE

4/16/97

*See Instructions On Reverse Side

Title 18 U.S.C. Section 1001, makes it a crime for any person knowingly and willfully to make to any department or agency of the United States any false, fictitious or fraudulent statements or representations as to any matter within its jurisdiction.

DISTRICT I
P. O. Box 1980
Hobbs, NM 88241-1980

State of New Mexico
E gy, Minerals, and Natural Resources partment

Form C-102
Revised 02-10-94
Instructions on back

DISTRICT II
P. O. Drawer DD
Artesia, NM 88211-0719

OIL CONSERVATION DIVISION
P. O. Box 2088
Santa Fe, New Mexico 87504-2088

Submit to the Appropriate
District Office
State Lease - 4 copies
Fee Lease - 3 copies

☐ AMENDED REPORT

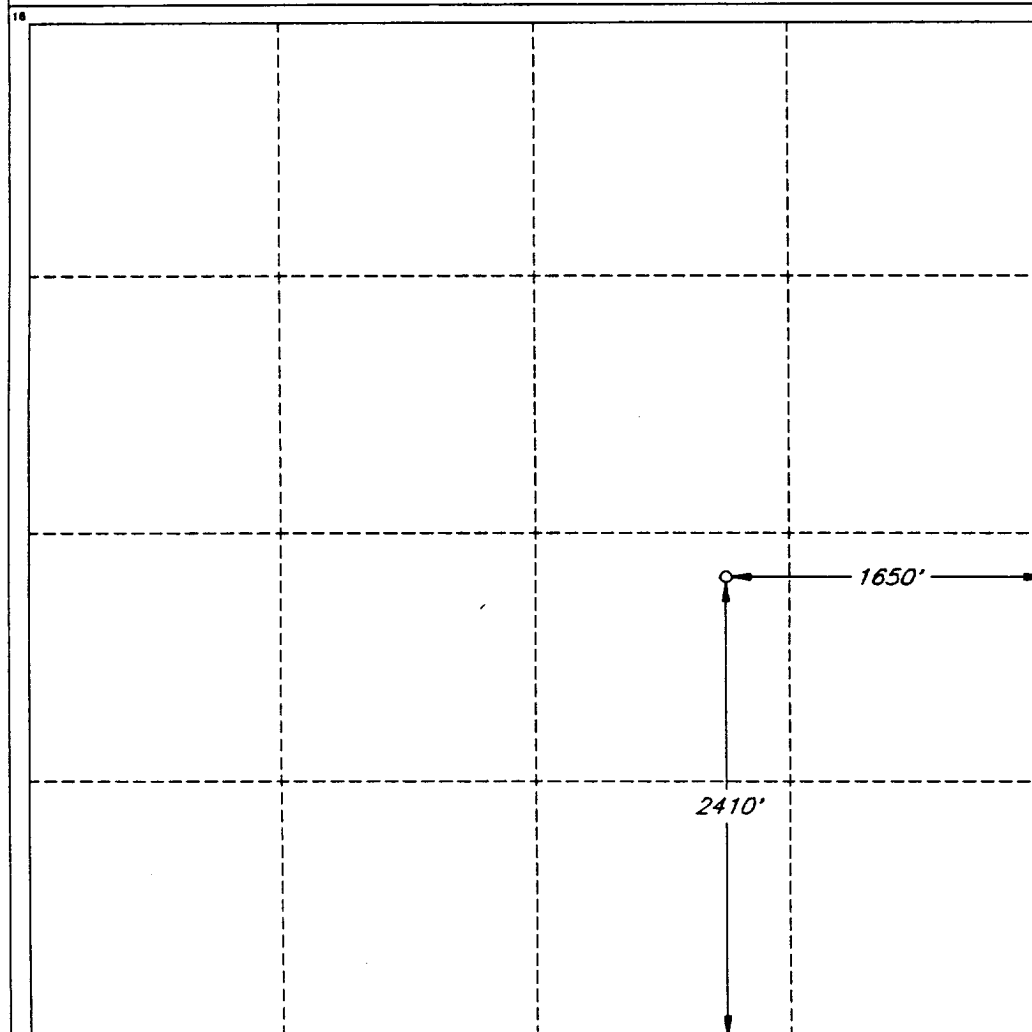
DISTRICT III
1000 Rio Brazos Rd.
Aztec, NM 87410

DISTRICT IV
P. O. Box 2088
Santa Fe, NM 87507-2088

WELL LOCATION AND ACREAGE DEDICATION PLAT

¹ API Number 30-025-33955		² Pool Code 17644/96643		³ Pool Name Diamondtail Bone Spring/Wildcat Delaware					
⁴ Property Code 20747		⁵ Property Name RED DEER '24' FEDERAL						⁶ Well Number 1	
⁷ OGRID No. 26485		⁸ Operator Name BURLINGTON RESOURCES OIL & GAS COMPANY						⁹ Elevation 3708'	
¹⁰ SURFACE LOCATION									
UL or lot no. J	Section 24	Township 23 SOUTH	Range 32 EAST, N.M.P.M.	Lot Ida	Feet from the 2410'	North/South line SOUTH	Feet from the 1650'	East/West line EAST	County LEA
¹¹ BOTTOM HOLE LOCATION IF DIFFERENT FROM SURFACE									
UL or lot no.	Section	Township	Range	Lot Ida	Feet from the	North/South line	Feet from the	East/West line	County
¹² Dedicated Acres 40		¹³ Joint or Infill		¹⁴ Consolidation Code		¹⁵ Order No. NSL-3777			

NO ALLOWABLE WELL BE ASSIGNED TO THIS COMPLETION UNTIL ALL INTERESTS HAVE BEEN CONSOLIDATED OR A NON-STANDARD UNIT HAS BEEN APPROVED BY THE DIVISION



OPERATOR CERTIFICATION

I hereby certify that the information contained herein is true and complete to the best of my knowledge and belief.

Signature
Donna Williams

Printed Name
Regulatory Compliance

Title

Date

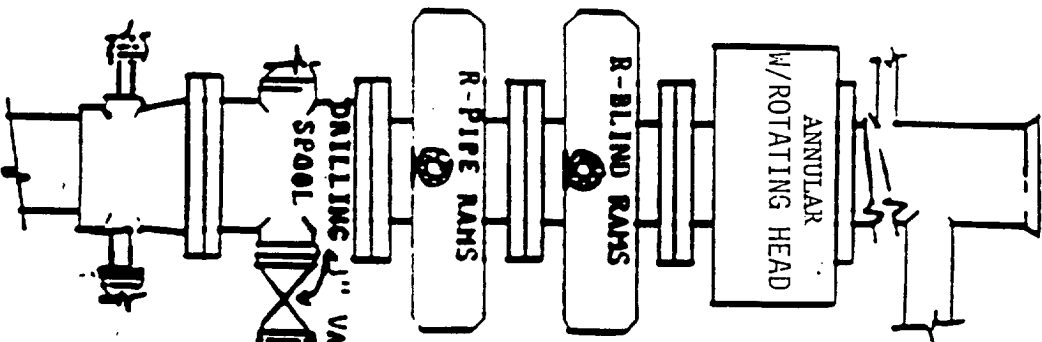
SURVEYOR CERTIFICATION

I hereby certify that the well location shown on this plat was plotted from field notes of actual surveys made by me or under my supervision, and that the same is true and correct to the best of my belief.

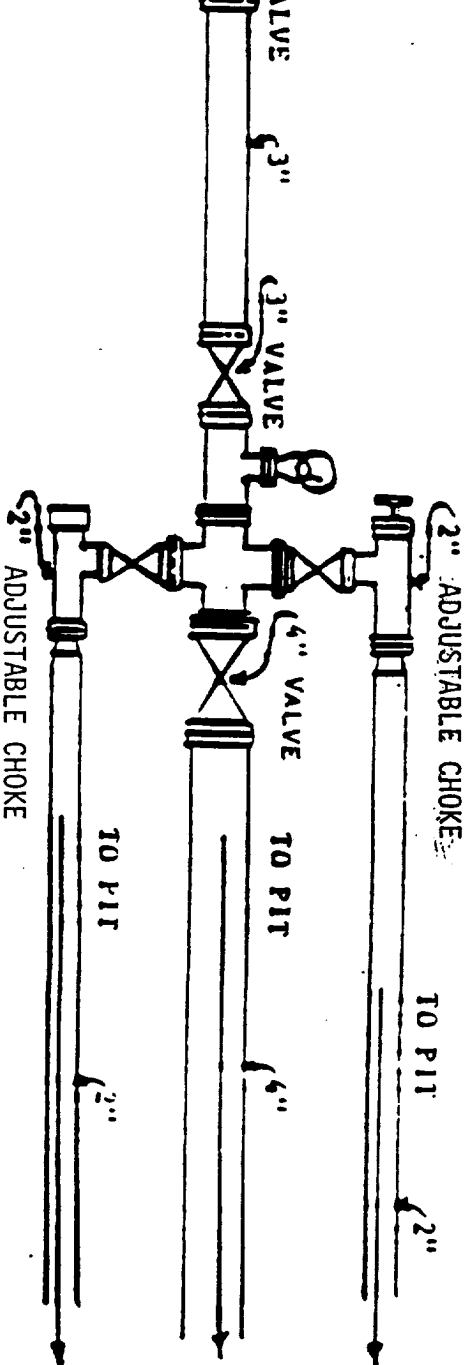
Date of Survey
OCTOBER 25, 1998

Signature and Seal of Professional Surveyor
V. LYNN BEZNER
NO. 7920
Certification No. 4732
JOB #48180 / 4732-SW / V.H.B.

DOUBLE RAM



BLOW OUT PREVENTION EQUIPMENT
 10" 900s ALL FLANGED CONNECTIONS
 3000# WORKING PRESSURE



OPERATORS NAME:	Burlington Resources Oil & Gas Company
LEASE NAME AND WELL NO.:	Red Deer '24' Federal Well No. 1
LOCATION:	2410' FSL & 1650' FEL, Sec. 24, T23S, R32E
FIELD NAME:	Diamondtail Bone Spring, Wildcat Delaware
COUNTY:	Lea County, New Mexico
LEASE NUMBER:	NM 063228

The following information is to supplement BLM form 3160-3 Application for permit to drill in accordance with Onshore Oil and Gas Order No. 1:

9 - POINT DRILLING PLAN

1. Name and estimated tops of important geologic formation/marker horizons.

<u>FORMATION</u>	<u>DEPTH</u>
Rustler	970'
Salado	1100'
Delaware	4850'
Bone Spring	8735'

2. Estimated depths at which the top and bottom of formations potentially containing usable water, oil, gas, or prospectively valuable deposits of other minerals are expected to be encountered and the operator's plans for protecting such resources.

Delaware	4850'
Bone Spring	8735'

3. The operator's minimum specifications for Blowout Preventer (BOP) and related equipment to be used and schematic diagrams thereof showing sizes, pressure ratings, and the testing procedures and testing frequency. BOP and BOP - related equipment (BOPE) schematics shall include schematics of choke manifold equipment. Accumulator systems and remote controls shall be utilized.

11"-3M BOP stack to be installed on the 9 5/8" & 7" casing strings. The BOP stack will consist of one blind ram BOP, one pipe ram BOP, and a rotating head. Tested to 3000 psi before drilling the 7" casing shoe.

4. The proposed casing program including size, grade, weights, type of thread and coupling, and the setting depth of each string and its condition (new or acceptably reconditioned). For exploratory wells, or for wells as otherwise specified by the authorized officer, the operator shall include the minimum design factors for tensions, burst, and collapse that are incorporated into the casing design. In cases where tapered casing strings are utilized, the operator shall also include and/or setting depths of each portion.

CASING:

12 1/4" hole, 9 5/8" K-55 36# STC csg, set @ 650'

8 3/4" hole, 7" K-55 23# LTC csg set @ 4650'

6 1/8" hole, 4 1/2" K-55 11.6# LTC csg set @ 9100'

5. The amount and type(s) of cement, including anticipated additives to be used in setting each casing string, shall be described. If stage cementing techniques are to be employed, the setting depth of the stage collars and amount and type of cement, including additives, and preflush amounts to be used in each stage, shall be given. The expected linear fill-up of each cemented string, or each stage when utilizing stage-cementing techniques, shall also be given.

- a. 9 5/8" csg: Cmted w/200 sxs 'C' + 4% gel + 2% CaCl₂, tail w/ 200 sxs 'C' + 2% CaCl₂. Circ. to surface.
- b. 7" csg: Cmted w/600 sxs 'C' Lite, tail w/200 sxs 'C' + 2% CaCl₂. Circ. to surface.

- c. 4 1/2" csg: Cmt w/130 sxs 'C' + 3% econolite + .5 pps flocele, tail w/370 sxs 'H' 50/50 Poz + .6% Halad-9 + 2% gel + 3 pps Kcl + .25 % flocele. TOC @ 4400'.

6. The anticipated characteristics, additives, use, and testing of drilling mud to be employed, along with the types and quantities of mud products to be maintained, shall be given. When air or gas drilling is proposed, the operator shall submit the following specific information:

Mud Program:

0-650' fresh water, gel and lime system, MW 8.6-9.0
650'-4650' brine, MW 10.0-10.1 ppg
4650'-9000' fresh water, MW 8.3-8.5

7. The anticipated testing, logging, and coring procedures to be used, including drill stem testing procedures, equipment, and safety measures.

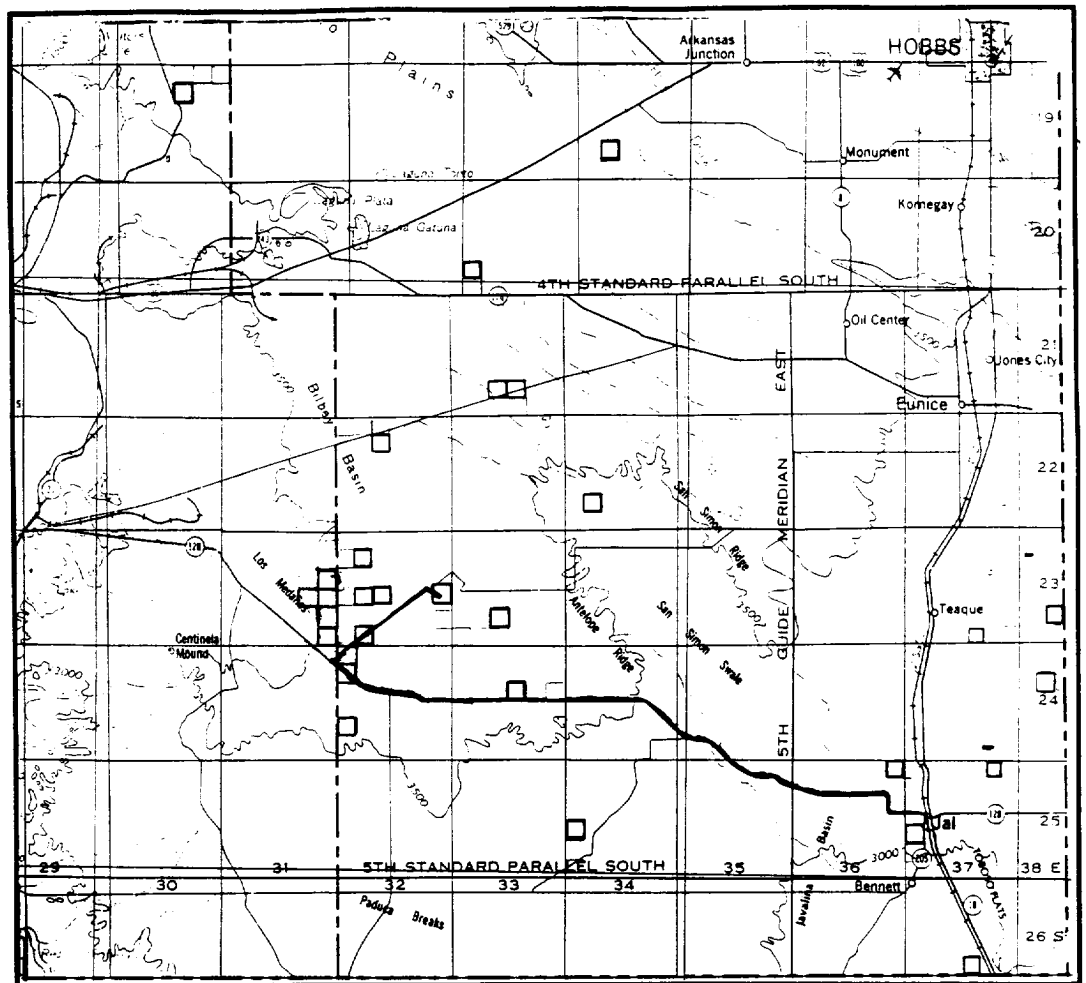
- a. DST Program: None
- b. Core: None
- c. Mud Logging: Two man unit 4650' to TD
- d. Logs to be run: DIL/GR/Density/Neutron/Sonic/Gamma Ray

The expected bottom-hole pressure and any anticipated abnormal pressures, temperatures or potential hazards that are expected to be encountered, such as lost circulation zones and hydrogen sulfide. The operator's plans for mitigating such hazards shall be discussed. Should the potential to encounter hydrogen sulfide exist, the mitigation procedures shall comply with the provisions of Onshore Oil and Gas Order No. 6.

No abnormal pressures are anticipated. Bottom hole pressures at TD expected to be 4300 psi. Bottom hole temperature 140 F. There is no anticipated Hydrogen Sulfide in this known drilling area.

9. Any other facets of the proposed operation which the operator wishes for BLM to consider in reviewing the application.

Anticipated drilling time expected to be 18 days to TD.



SECTION 24 TWP 23-S RGE 32-E
 SURVEY NEW MEXICO PRINCIPAL MERIDIAN
 COUNTY LEA STATE NM
 DESCRIPTION 2410' FSL & 1650' FEL

OPERATOR BURLINGTON RESOURCES OIL & GAS CO.
 LEASE RED DEER FEDERAL "24" #1

DISTANCE & DIRECTION FROM JAL, GO WEST 34.5 MILES
ON STATE HWY. 128, THENCE NORTHEAST 6.0 MILES ON
LEASE ROAD, THENCE SOUTHEAST 0.3 MILE ON LEASE
ROAD TO A POINT $\pm 3750'$ WEST OF THE LOCATION.



This location has been very carefully staked on the ground according to the best official survey records, maps, and other data available to us.
 Review this plat and notify us immediately of any possible discrepancy.

TOPOGRAPHIC LAND SURVEYORS

Surveying & Mapping for the Oil & Gas Industry

1307 N. HOBART
 PAMPA, TX. 79065
 (800) 658-6382

6709 N. CLASSEN BLVD.
 OKLAHOMA CITY, OK. 73116
 (800) 654-3219

2903 N. BIG SPRING
 MIDLAND, TX. 79705
 (800) 767-1653