



STATE OF NEW MEXICO  
ENERGY, MINERALS AND NATURAL RESOURCES DEPARTMENT

OIL CONSERVATION DIVISION  
HOBBS DISTRICT OFFICE

February 3, 1999

POST OFFICE BOX 1980  
HOBBS, NEW MEXICO 88241-1980  
(505) 393-6161

Titan Resources I Inc  
ATTN: Ron Lechwar  
500 W Texas, Suite 500

Midland, TX 79701

**RE: CANCELLATION OF INTENT TO DRILL**

Brunson Argo #28-G

Sec. 9, T-22s, R-37e, 1950/N & 1650/E

API #30-025-33995

Gentlemen:

Twelve months or more have elapsed since Division Form C-101, Notice of Intention to drill, for the subject well was approved. To date no progress reports, Forms C-103, have been received. Therefore, approval of your permit to drill this well has now expired and no drilling operations are to be initiated without further notice to and approval by the Oil Conservation Division. Pending such approval, this location will be considered as an abandoned location.

Very truly yours,

OIL CONSERVATION DIVISION

*Chris Williams* by dp

Chris Williams  
District I, Supervisor

CW:dp

cc: OCD Santa Fe  
BLM  
State Land Office  
OCD Hobbs well file

*Void*

District I  
PO Box 1980, Hobbs, NM 88241-1980

District II  
811 South First, Artesia, NM 88210

District III  
1000 Rio Brazos Rd., Aztec, NM 87410

District IV  
2040 South Pacheco, Santa Fe, NM 87505

State of New Mexico  
Energy, Minerals & Natural Resources Department

OIL CONSERVATION DIVISION  
2040 South Pacheco  
Santa Fe, NM 87505

Form C-161

Revised October 18, 1994

Instructions on back  
Submit to Appropriate District Office  
State Lease - 6 Copies  
Fee Lease - 5 Copies

☐ AMENDED REPORT

APPLICATION FOR PERMIT TO DRILL, RE-ENTER, DEEPEN, PLUGBACK, OR ADD A ZONE

<sup>1</sup> Operator Name and Address. Titan Resources I, Inc. 500 W. Texas, Suite 500 Midland, Texas 79701		<sup>2</sup> OGRID Number 150661
<sup>4</sup> Property Code 20000	<sup>3</sup> Property Name Brunson-Argo	<sup>5</sup> Well No. 28

<sup>7</sup> Surface Location

UL or lot no.	Section	Township	Range	Lot Idn	Feet from the	North/South line	Feet from the	East/West line	County
G	9	22S	37E		1950	North	1650	East	Lea

<sup>8</sup> Proposed Bottom Hole Location If Different From Surface

UL or lot no.	Section	Township	Range	Lot Idn	Feet from the	North/South line	Feet from the	East/West line	County
<sup>9</sup> Proposed Pool 1 Wantz Abo					<sup>10</sup> Proposed Pool 2				

<sup>11</sup> Work Type Code N	<sup>12</sup> Well Type Code O	<sup>13</sup> Cable/Rotary R	<sup>14</sup> Lease Type Code P	<sup>15</sup> Ground Level Elevation 3419'
<sup>16</sup> Multiple No	<sup>17</sup> Proposed Depth 7350'	<sup>18</sup> Formation Abo	<sup>19</sup> Contractor TMBR/SHARP	<sup>20</sup> Spud Date 7/22/97

<sup>21</sup> Proposed Casing and Cement Program

Hole Size	Casing Size	Casing weight/foot	Setting Depth	Sacks of Cement	Estimated TOC
12 1/4"	8 5/8"	24	+ 1200'	520	surface
7 7/8"	5 1/2"	17	TD	950	surface

<sup>22</sup> Describe the proposed program. If this application is to DEEPEN or PLUG BACK give the data on the present productive zone and proposed new productive zone. Describe the blowout prevention program, if any. Use additional sheets if necessary.

1. Drill 12 1/4" hole to + 1200'. Run 8 5/8" casing to + 1200' & cement with 520 sx.
2. WOC 18 hrs test BOP and casing to 1000 psi prior to drill out.
3. Drill 7 7/8" hole to TD. Run 5 1/2" casing to TD. Run DV tool in casing string at + 4500'. Cement with 950 sx.

BOP Equipment: Double Ram, 3000 psi W.P. from under surface casing to TD.

Permit Expires 1 Year From Approval  
Date Unless Drilling Underway

<sup>23</sup> I hereby certify that the information given above is true and complete to the best of my knowledge and belief.

Signature: *Ron Lechwar*  
Printed name: Ron Lechwar

Title: Project Manager

Date: 5/28/97  
Phone: (915)682-6612

OIL CONSERVATION DIVISION

Approved by: *Chris Williams*  
Title: District Supervisor

Approval Date: 6/2/97  
Expiration Date: 6/2/98

Conditions of Approval:  
Attached ☐

FOR RECORD ONLY

**C-101 Instructions**

Measurements and dimensions are to be in feet/inches. Well locations will refer to the New Mexico Principal Meridian.

**IF THIS IS AN AMENDED REPORT CHECK THE BOX LABELED "AMENDED REPORT" AT THE TOP OF THIS DOCUMENT.**

program. Attach additional sheets if necessary.

**23**

The signature, printed name, and title of the person authorized to make this report. The date this report was signed and the telephone number to call for questions about this report.

- 1 Operator's OGRID number. If you do not have one it will be assigned and filled in by the District office.
- 2 Operator's name and address
- 3 API number of this well. If this is a new drill the OCD will assign the number and fill this in.
- 4 Property code. If this is a new property the OCD will assign the number and fill it in.
- 5 Property name that used to be called 'well name'
- 6 The number of this well on the property.
- 7 The surveyed location of this well New Mexico Principal Meridian NOTE: If the United States government survey designates a Lot Number for this location use that number in the 'UL or lot no.' box. Otherwise use the OCD Unit Letter.
- 8 The proposed bottom hole location of this well at TD
- 9 and 10 The proposed pool(s) to which this well is being drilled.
- 11 Work type code from the following table:
 

N	New well
E	Re-entry
D	Drill deeper
P	Plugback
A	Add a zone
- 12 Well type code from the following table:
 

O	Single oil completion
G	Single gas completion
M	Multiple completion
I	Injection well
S	SWD well
W	Water supply well
C	Carbon dioxide well
- 13 Cable or rotary drilling code
 

C	Propose to cable tool drill
R	Propose to rotary drill
- 14 Lease type code from the following table:
 

S	State
P	Private
- 15 Ground level elevation above sea level
- 16 Intend to multiple complete? Yes or No
- 17 Proposed total depth of this well
- 18 Geologic formation at TD
- 19 Name of the intended drilling company if known.
- 20 Anticipated spud date.
- 21 Proposed hole size ID inches, proposed casing OD inches, casing weight in pounds per foot, setting depth of the casing or depth and top of liner, proposed cementing volume, and estimated top of cement
- 22 Brief description of the proposed drilling program and BOP

DISTRICT I  
P.O. Box 1980, Hobbs, NM 88241-1980

State of New Mexico  
Energy, Minerals and Natural Resources Department

Form C-102  
Revised February 10, 1994  
Submit to Appropriate District Office  
State Lease - 4 Copies  
Fee Lease - 3 Copies

DISTRICT II  
P.O. Drawer DD, Artesia, NM 88211-0719

DISTRICT III  
1000 Rio Brazos Rd., Aztec, NM 87410

OIL CONSERVATION DIVISION

P.O. Box 2088  
Santa Fe, New Mexico 87504-2088

DISTRICT IV  
P.O. Box 2088, Santa Fe, NM 87504-2088

☐ AMENDED REPORT

WELL LOCATION AND ACREAGE DEDICATION PLAT

API Number <b>30-025-33995</b>	Pool Code 62700	Pool Name Wantz Abo
Property Code 20000	Property Name BRUNSON ARGO	Well Number 28
OGRID No. 150661	Operator Name TITAN RESOURCES 1, INC.	Elevation 3419

Surface Location

UL or lot No.	Section	Township	Range	Lot Idn	Feet from the	North/South line	Feet from the	East/West line	County
G	9	22 S	37 E		1950	NORTH	1650	EAST	LEA

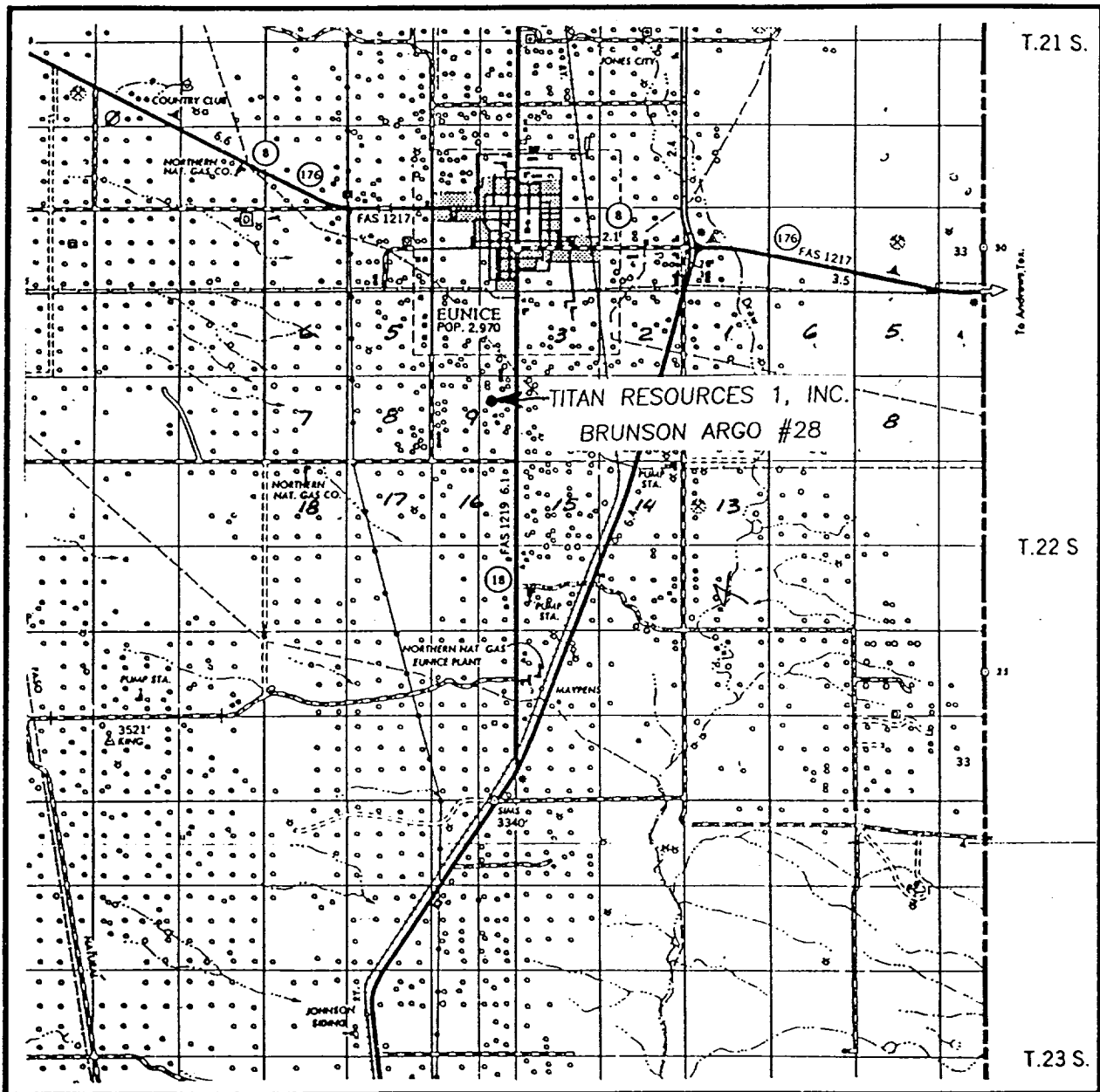
Bottom Hole Location If Different From Surface

UL or lot No.	Section	Township	Range	Lot Idn	Feet from the	North/South line	Feet from the	East/West line	County
Dedicated Acres 40	Joint or Infill N	Consolidation Code	Order No.						

NO ALLOWABLE WILL BE ASSIGNED TO THIS COMPLETION UNTIL ALL INTERESTS HAVE BEEN CONSOLIDATED  
OR A NON-STANDARD UNIT HAS BEEN APPROVED BY THE DIVISION

	<b>OPERATOR CERTIFICATION</b> I hereby certify the the information contained herein is true and complete to the best of my knowledge and belief.   Signature Ron Lechwar Printed Name Project Manager Title 5/28/97 Date
	<b>SURVEYOR CERTIFICATION</b> I hereby certify that the well location shown on this plat was plotted from field notes of actual surveys made by me or under my supervision, and that the same is true and correct to the best of my belief.  MAY 16, 1997 Date Surveyed Signature & Seal of Professional Surveyor  W.O. Num. 87-11-0840 Certificate No. JOHN W. WEST, 676 RONALD J. EIDSON, 3239 DAVE C. EIDSON, 12641

# VICINITY MAP



SCALE: 1" = 2 MILES

SEC. 9 TWP. 22-S RGE. 37-E

SURVEY N.M.P.M.

COUNTY LEA

DESCRIPTION 1950' FNL & 1650' FEL

ELEVATION 3419'

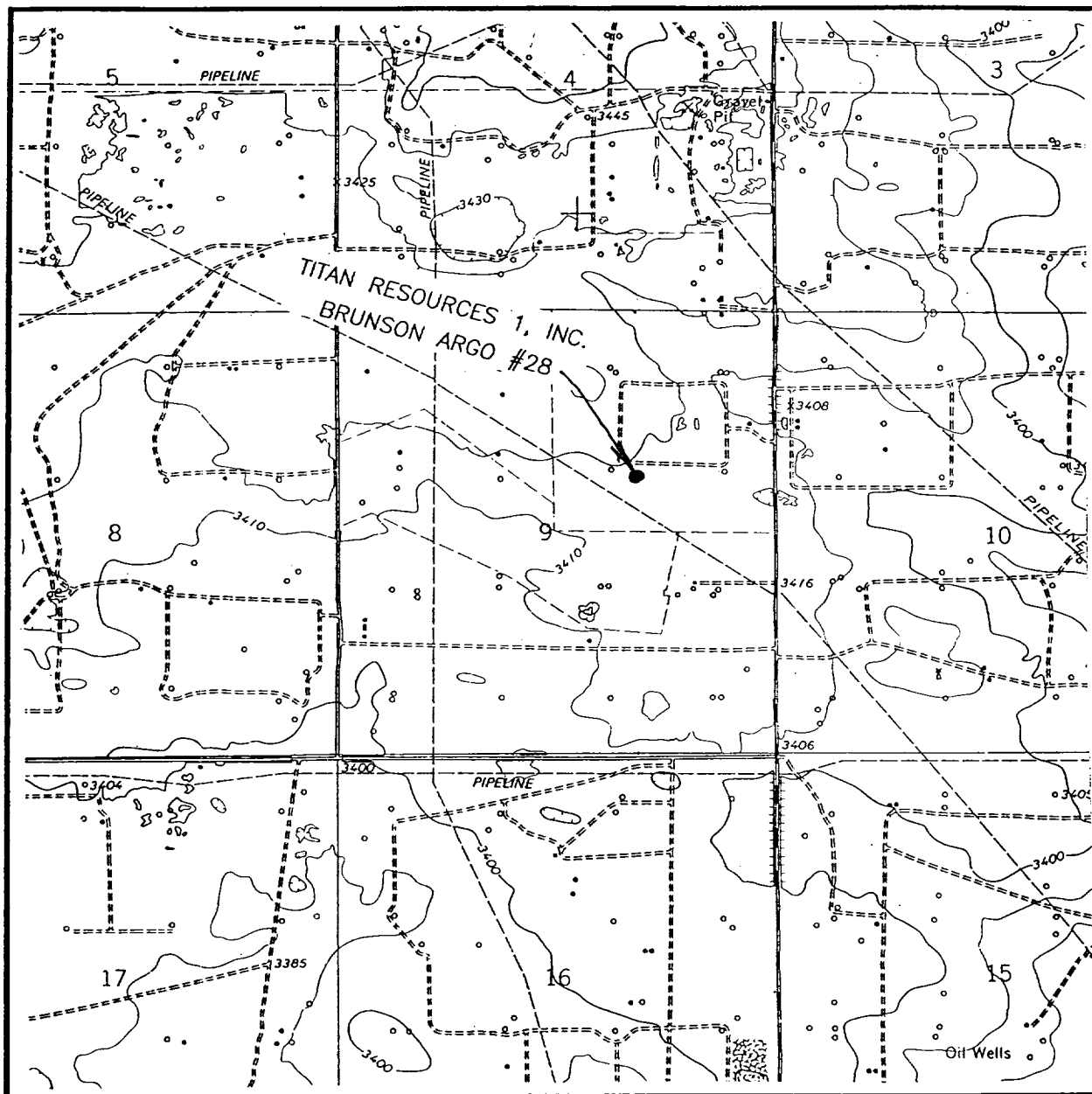
OPERATOR TITAN RESOURCES 1, INC.

LEASE BRUNSON ARGO

**JOHN WEST ENGINEERING  
HOBBS, NEW MEXICO**

**(505) 393-3117**

# LOCATION VERIFICATION MAP



SCALE: 1" = 2000'

CONTOUR INTERVAL - 10'

SEC. 9 TWP. 22-S RGE. 37-E

SURVEY N.M.P.M.

COUNTY LEA

DESCRIPTION 1950' FNL & 1650' FEL

ELEVATION 3419'

OPERATOR TITAN RESOURCES 1, INC.

LEASE BRUNSON ARGO

U.S.G.S. TOPOGRAPHIC MAP

EUNICE, N.M.

**JOHN WEST ENGINEERING  
HOBBS, NEW MEXICO**

**(505) 393-3117**