

PO Box 1980, Hobbs, NM 88240-1980
District II
PO Drawer DD, Artesia, NM 88211-0719
District III
1000 Rio Brazos Rd., Aztec, NM 87410
District IV
PO Box 2088, Santa Fe, NM 87504-2088

Energy, Minerals & Natural Resources Department

OIL CONSERVATION DIVISION
PO Box 2088
Santa Fe, NM 87504-2088

Revised February 10, 1994
Instructions on back
Submit to Appropriate District Office
State Lease - 6 Copies
Fee Lease - 5 Copies

☐ AMENDED REPORT

APPLICATION FOR PERMIT TO DRILL, RE-ENTER, DEEPEN, PLUGBACK, OR ADD A ZONE

Operator Name and Address PENWELL ENERGY INC. 1100 ARCO BUILDING (BILL PIERCE) 600 N. MERIENFELD MIDLAND, TEXAS 79701		OGRID Number 147380
		AFT Number 30-025-34258
Property Code 22218	Property Name GAZELLE "16" STATE	Well No. 1

7 Surface Location

UL or lot no.	Section	Township	Range	Lot Ida	Feet from the	North/South line	Feet from the	East/West line	County
J	16	23S	34E		1980'	South	1980'	East	Lea

8 Proposed Bottom Hole Location If Different From Surface

UL or lot no.	Section	Township	Range	Lot Ida	Feet from the	North/South line	Feet from the	East/West line	County

Proposed Pool 1 ANTELOPE RIDGE CHERRY CANYON SOUTH /2215	Proposed Pool 2
--	------------------------

Work Type Code N	Well Type Code O	Cable/Rotary R	Lease Type Code S	Ground Level Elevation 3425'
Multiple NO	Proposed Depth 9000'	Formation DELAWARE	Contractor Unknown	Spud Date When Approved

21 Proposed Casing and Cement Program

Hole Size	Casing Size	Casing weight/foot	Setting Depth	Sacks of Cement	Estimated TOC
24"	20"	Conductor	40'	Redi-mix	Surface
17½"	13 3/8"	48#	650'	700 Sx.	Surface
12½"	8 5/8"	32#	5000'	2000 Sx.	Surface
7 7/8"	5½"	15.5 & 17 #	9000'	850 Sx.	4800'

Describe the proposed program. If this application is to DEEPEN or PLUG BACK give the data on the present productive zone and proposed new productive zone. Describe the blowout prevention program, if any. Use additional sheets if necessary.

1. Drill 24" hole to 40'. Set 40' of 20" conductor pipe and cement to surface with Redi-mix.
2. Drill 17½" hole to 650'. Run and set 650' of 13 3/8" 48# H-40 ST&C casing. Cement with 500 Sx. of Class "C" Halco Light cement + additives, tail in with 200 Sx. of Class "C" cement + 2% CaCl + ½# flocele/Sx. Circulate cement to surface.
3. Drill 12½" hole to 5000'. Run and set 5000' of 8 5/8" 32# J-55 ST&C casing. Cement in two stages. 1st stage cement with 800 Sx. of Class "C" Halco light + additives, tail in with 200 Sx. of Class "C" cement + 2% CaCl + ½# flocele/Sx. 2nd stage cement with 800 Sx. of Class "C" Halco light + additives, tail in with 200 Sx. of Class "C" cement + 2% CaCl + ½# flocele/ Sx. Circulate cement to surface.
4. Drill 7 7/8" hole to 9000'. Run and set 9000' of 5½" 15.5 & 17# J-55 & N-80 LT&C casing. Cement with 650 Sx. of Class "H" Halco light + additives, tail in with 200 Sx. of Class "H" Premium cement. Estimate top of cement 4800'.

I hereby certify that the information given above is true and complete to the best of my knowledge and belief.

Signature:

Printed name: Joe T. Janica

Title: Agent

Date: 01/06/98

Phone: 505-392-2112

OIL CONSERVATION DIVISION

Approved by: ORIGINAL SIGNED BY CHRIS WILLIAMS
Title: DISTRICT I SUPERVISOR

Approval Date: 1/07/98 Expiration Date:

Conditions of Approval:
Attached ☐

Permit Expires 1 Year From Approval
Date Unless Drilling Underway

404

2
MP

DISTRICT I
P.O. Box 1980, Hobbs, NM 88240

State of New Mexico
Energy, Minerals and Natural Resources Department

Form C-102
Revised February 10, 1994
Instruction on back
Submit to Appropriate District Office
State Lease - 4 Copies
Fee Lease - 3 Copies

DISTRICT II
P.O. Drawer DD, Artesia, NM 88210

OIL CONSERVATION DIVISION

DISTRICT III
1000 Rio Brazos Rd., Aztec, NM 87410

P.O. Box 2088
Santa Fe, New Mexico 87504-2088

☐ AMENDED REPORT

WELL LOCATION AND ACREAGE DEDICATION PLAT

API Number 30-025-34258	Pool Code 72215	Pool Name ANTELOPE RIDGE CHERRY CANYON SOUTH
Property Code 22218	Property Name Gazelle "16" State	Well Number 1
OGRID No. 147380	Operator Name Penwell Energy Inc.	Elevation 3425'

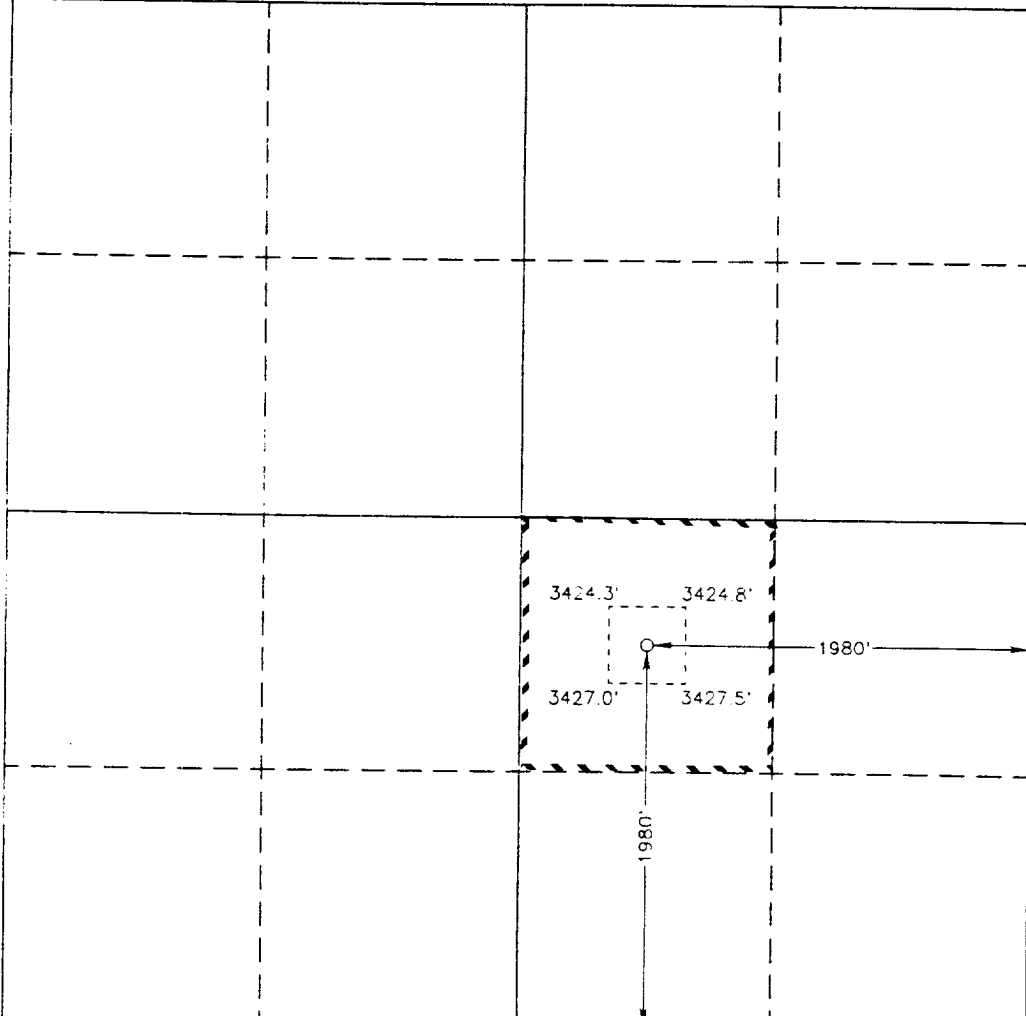
Surface Location

UL or lot No.	Section	Township	Range	Lot Idn	Feet from the	North/South line	Feet from the	East/West line	County
J	16	23 S	34 E		1980	South	1980	East	Lea

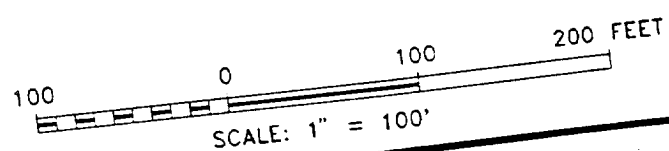
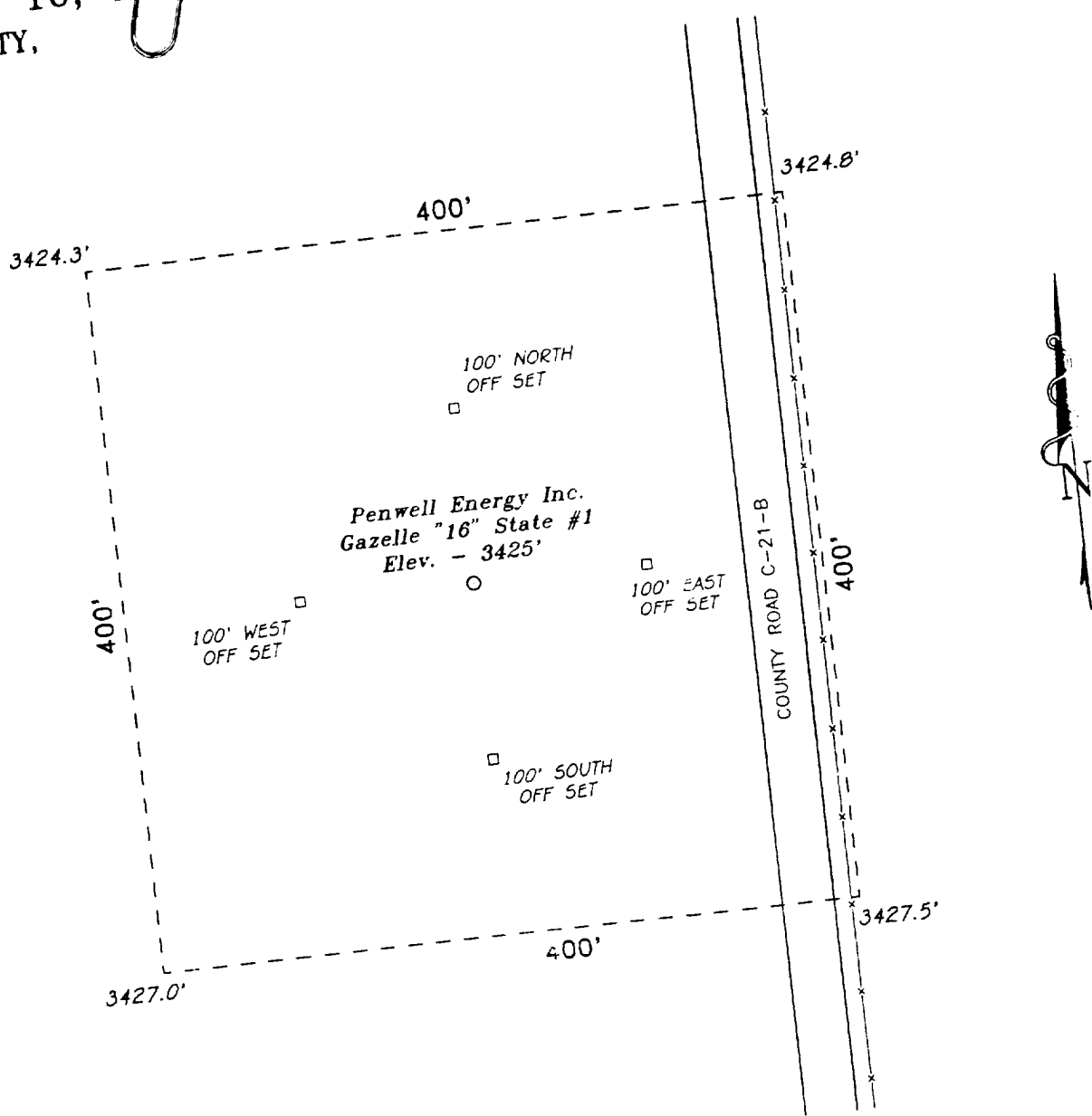
Bottom Hole Location If Different From Surface

UL or lot No.	Section	Township	Range	Lot Idn	Feet from the	North/South line	Feet from the	East/West line	County
Dedicated Acres 40	Joint or Infill	Consolidation Code	Order No.						

NO ALLOWABLE WILL BE ASSIGNED TO THIS COMPLETION UNTIL ALL INTERESTS HAVE BEEN CONSOLIDATED
OR A NON-STANDARD UNIT HAS BEEN APPROVED BY THE DIVISION

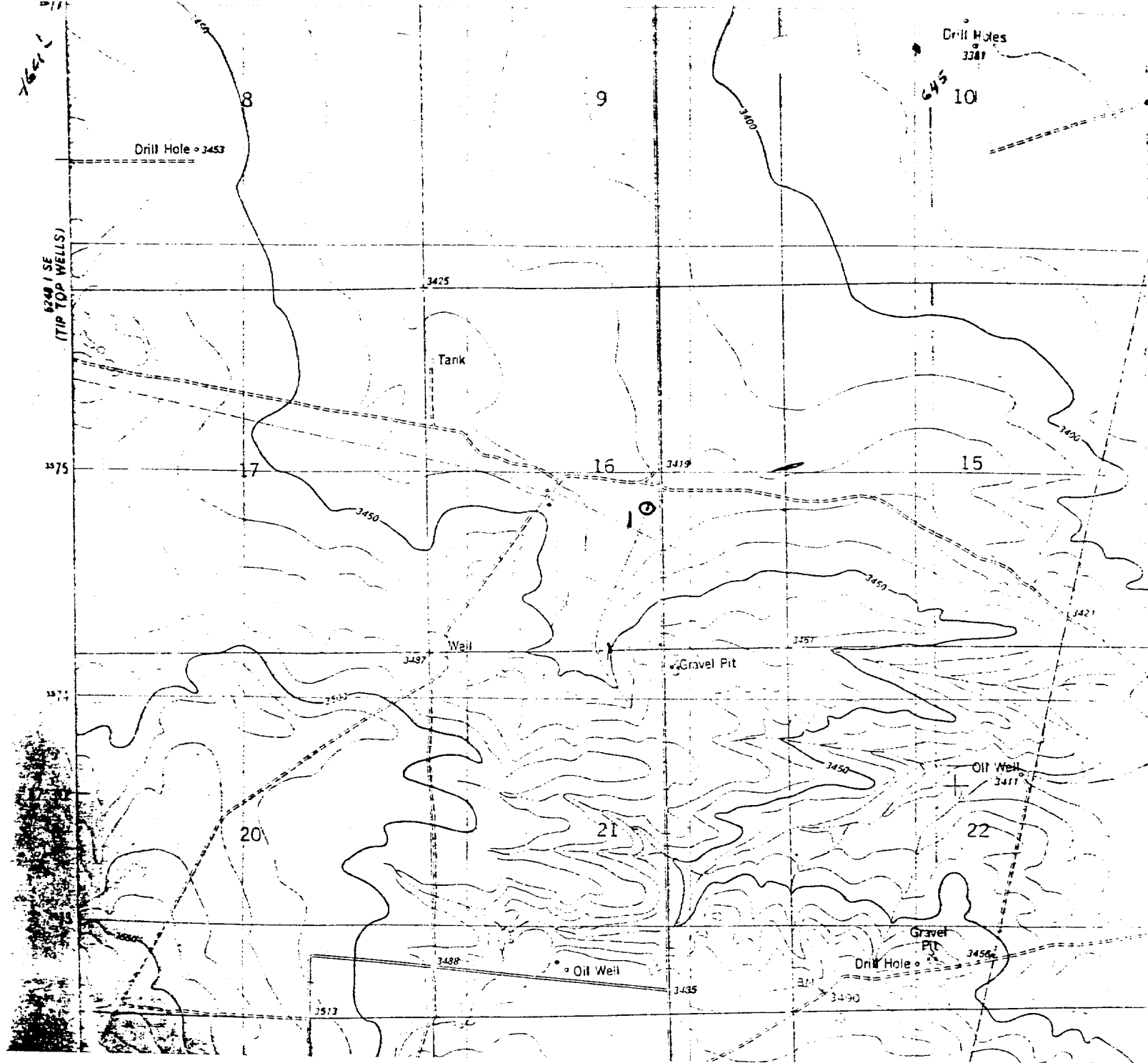
	<p>OPERATOR CERTIFICATION</p> <p>I hereby certify the the information contained herein is true and complete to the best of my knowledge and belief.</p> <p><i>Joe T Janica</i> Signature Joe T. Janica Printed Name Agent Title 01/05/98 Date</p>
	<p>SURVEYOR CERTIFICATION</p> <p>I hereby certify that the well location shown on this plat was plotted from field notes of actual surveys made by me or under my supervision, and that the same is true and correct to the best of my belief.</p> <p>December 14, 1997 Date Surveyed Signature of Surveyor Professional Surveyor No. 77380 Certificate No. 7977 BASIN SURVEYS</p>

SECTION 16, TOWNSHIP 23 SOUTH, RANGE 34 EAST, N.M.P.M.,
LEA COUNTY, NEW MEXICO.



Penwell Energy Inc.	
REF: Gazelle "16" State No. 1/ Well Pad Top	
THE GAZELLE "16" STATE No. 1 LOCATED 1980'	
FROM THE SOUTH LINE AND 1980' FROM THE EAST LINE	
SECTION 16, TOWNSHIP 23 SOUTH, RANGE 34 EAST,	
N.M.P.M., LEA COUNTY, NEW MEXICO.	
W.O. Number: 7731	Survey Date: 12-11-97
Date: 12-12-97	Sheet 1 of 1

BASIN SURVEYS	
P.O. BOX 1786 - HOBBS, NEW MEXICO	
Drawn By: S.C. NICHOLS	Disk: SCN #39 - 7731AA.DWG



Penwell Energy Inc.
 Gazelle "16" State No. 1
 1980' FSL & 1980' FEL
 Sec. 16, T-23-S, R-34-E,
 Lea County, New Mexico.



SCALE: 1"=2000'

BASIN SURVEYS

P.O. BOX 1786-HOBBS, NEW MEXICO

2000' 0 2000' 4000 Feet

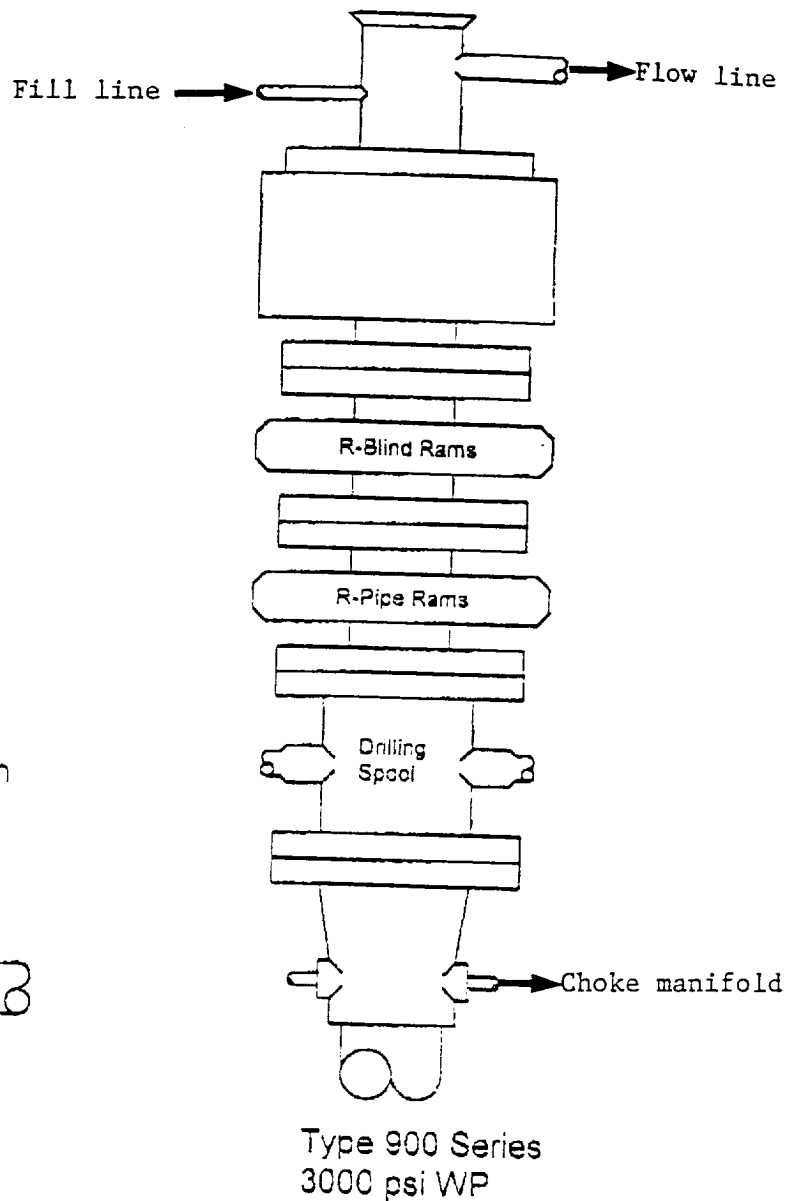
W.O. Number: 7731

Drawn By: S.C. Nichols

Survey Date: 11-11-97

Sheet 1 of 1 Sheets

BLOWOUT PREVENTER SYSTEM



Choke Manifold Assembly for 3M WP System

