

District I
PO Box 1980, Hobbs, NM 88241-1980
District II
PO Drawer DD, Artesia, NM 88211-0719
District III
1000 Rio Brazos Rd., Aztec, NM 87410
District IV
PO Box 2088, Santa Fe, NM 87504-2088

State of New Mexico
Energy, Minerals & Natural Resources Department

OIL CONSERVATION DIVISION
PO Box 2088
Santa Fe, NM 87504-2088

Form C-101
Revised February 10, 1994
Instructions on back
Submit to Appropriate District Office
State Lease - 6 Copies
Fee Lease - 5 Copies

☐ AMENDED REPORT

APPLICATION FOR PERMIT TO DRILL, RE-ENTER, DEEPEN, PLUGBACK, OR ADD A ZONE

Operator Name and Address. PENWELL ENERGY, INC. 600 NORTH MARIENFELD SUITE 1100 MIDLAND, TEXAS 79701		OGRID Number 147380
		API Number 30-025-34306
Property Code 20582	Property Name TOMCAT "16" STATE	
		Well No. 2

7 Surface Location

UL or lot no.	Section	Township	Range	Lot Ida	Feet from the	North/South line	Feet from the	East/West line	County
M	16	23S	32E		660'	South	660'	West	LEA

8 Proposed Bottom Hole Location If Different From Surface

UL or lot no.	Section	Township	Range	Lot Ida	Feet from the	North/South line	Feet from the	East/West line	County

Proposed Pool 1 DIAMONDTAIL-DELAWARE 17647 Wildcat	Proposed Pool 2
--	-----------------

Work Type Code N	Well Type Code O	Cable/Rotary R	Lease Type Code S	Ground Level Elevation 3679'
Multiple NO	Proposed Depth 8800'	Formation DELAWARE	Contractor UNKNOWN	Spud Date WHEN APPROVED

21 Proposed Casing and Cement Program

Hole Size	Casing Size	Casing weight/foot	Setting Depth	Sacks of Cement	Estimated TOC
25"	20"	Conductor	40'	Redi-mix	Surface
12 1/4"	8 5/8"	24	1250'	700 Sx.	Surface
7 7/8"	5 1/2"	15.5 & 17	8800'	1200 Sx.	1000'

Describe the proposed program. If this application is to DEEPEN or PLUG BACK give the data on the present productive zone and proposed new productive zone. Describe the blowout prevention program, if any. Use additional sheets if necessary.

1. Drill 25" hole to 40'. Set 40' of 20" conductor and cement to surface with Redi-mix.
2. Drill 12 1/4" hole to 1250'. Run and set 1250' of 8 5/8" 24# J-55 ST&C casing. Cement with 500 Sx. of Class "C" Halco Light + additives, tail in with 200 Sx. of Class "C" cement + 2% CaCl, circulate cement to surface.
3. Drill 7 7/8" hole to 8800'. Run and set 8800' of 5 1/2" 15.5 & 17 # N-80 LT&C casing. Cement with 900 Sx of Light cement + additives, tail in with 300 Sx. of 50/50 POZ. Estimate top of cement 1000'.

Permit Expires 1 Year from approval
Date Unless Drilling Underway

I hereby certify that the information given above is true and complete to the best of my knowledge and belief. Signature: <i>Joe T. Janica</i>		OIL CONSERVATION DIVISION	
Printed name: Joe T. Janica		Approved by: ORIGINAL SIGNED BY CHRIS WILLIAMS	
Title: Agent		Title: DISTRICT SUPERVISOR	
Date: 02/16/98		Approval: FEB 17 1998	Expiration Date:
Phone: 505-392-2112		Conditions of Approval: Attached <input type="checkbox"/>	

DISTRICT I
P.O. Box 1980, Hobbs, NM 88240

DISTRICT II
P.O. Drawer DD, Artesia, NM 88210

DISTRICT III
1000 Rio Brazos Rd., Aztec, NM 87410

State of New Mexico
Energy, Minerals and Natural Resources Department

Form C-102
Revised February 10, 1994
Instruction on back
Submit to Appropriate District Office
State Lease - 4 Copies
Fee Lease - 3 Copies

OIL CONSERVATION DIVISION
P.O. Box 2088
Santa Fe, New Mexico 87504-2088

☐ AMENDED REPORT

WELL LOCATION AND ACREAGE DEDICATION PLAT

API Number 30-025-34306	Pool Code 17467	Pool Name DIAMONDTAIL-DELAWARE Wildcat
Property Code 20582	Property Name TOMCAT "16" FEDERAL	Well Number 2
OGRID No. 147380	Operator Name PENWELL ENERGY INC.	Elevation 3679'

Surface Location

UL or lot No. M	Section 16	Township 23 S	Range 32 E	Lot Idn	Feet from the 660	North/South line SOUTH	Feet from the 660	East/West line WEST	County LEA
---------------------------	----------------------	-------------------------	----------------------	---------	-----------------------------	----------------------------------	-----------------------------	-------------------------------	----------------------

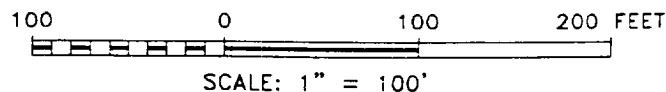
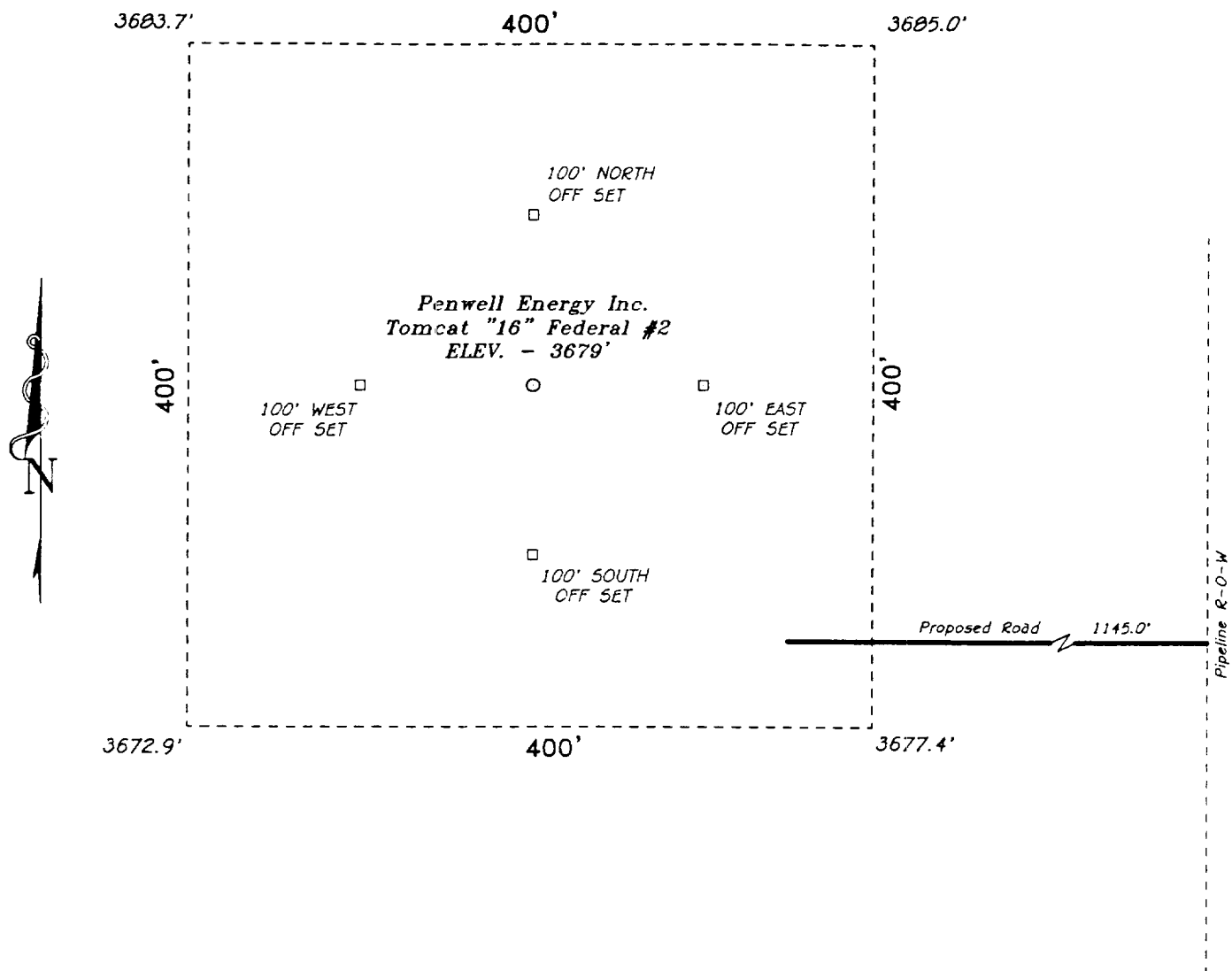
Bottom Hole Location If Different From Surface

UL or lot No.	Section	Township	Range	Lot Idn	Feet from the	North/South line	Feet from the	East/West line	County
Dedicated Acres 40	Joint or Infill	Consolidation Code	Order No.						

NO ALLOWABLE WILL BE ASSIGNED TO THIS COMPLETION UNTIL ALL INTERESTS HAVE BEEN CONSOLIDATED
OR A NON-STANDARD UNIT HAS BEEN APPROVED BY THE DIVISION

	OPERATOR CERTIFICATION I hereby certify the the information contained herein is true and complete to the best of my knowledge and belief. Signature Joe T. Janica Printed Name Agent Title 02/16/98 Date	
	SURVEYOR CERTIFICATION I hereby certify that the well location shown on this plat was plotted from field notes of actual surveys made by me or under my supervision, and that the same is true and correct to the best of my belief. February 11, 1998 Date Surveyed Signature & Seal of Professional Surveyor NEW MEXICO REGISTERED No. 80368 Certificate No. Gary L. Jones 7977 BASIN SURVEYS	

SECTION 16, TOWNSHIP 23 SOUTH, RANGE 32 EAST, N.M.P.M.,
LEA COUNTY, NEW MEXICO.



Penwell Energy Inc.

REF: Tomcat "16" Federal No. 2 / Well Pad Topc

THE TOMCAT "16" FEDERAL No. 2 LOCATED 660' FROM THE
SOUTH LINE AND 660' FROM THE WEST LINE OF
SECTION 16, TOWNSHIP 23 SOUTH, RANGE 32 EAST,
N.M.P.M., LEA COUNTY, NEW MEXICO.

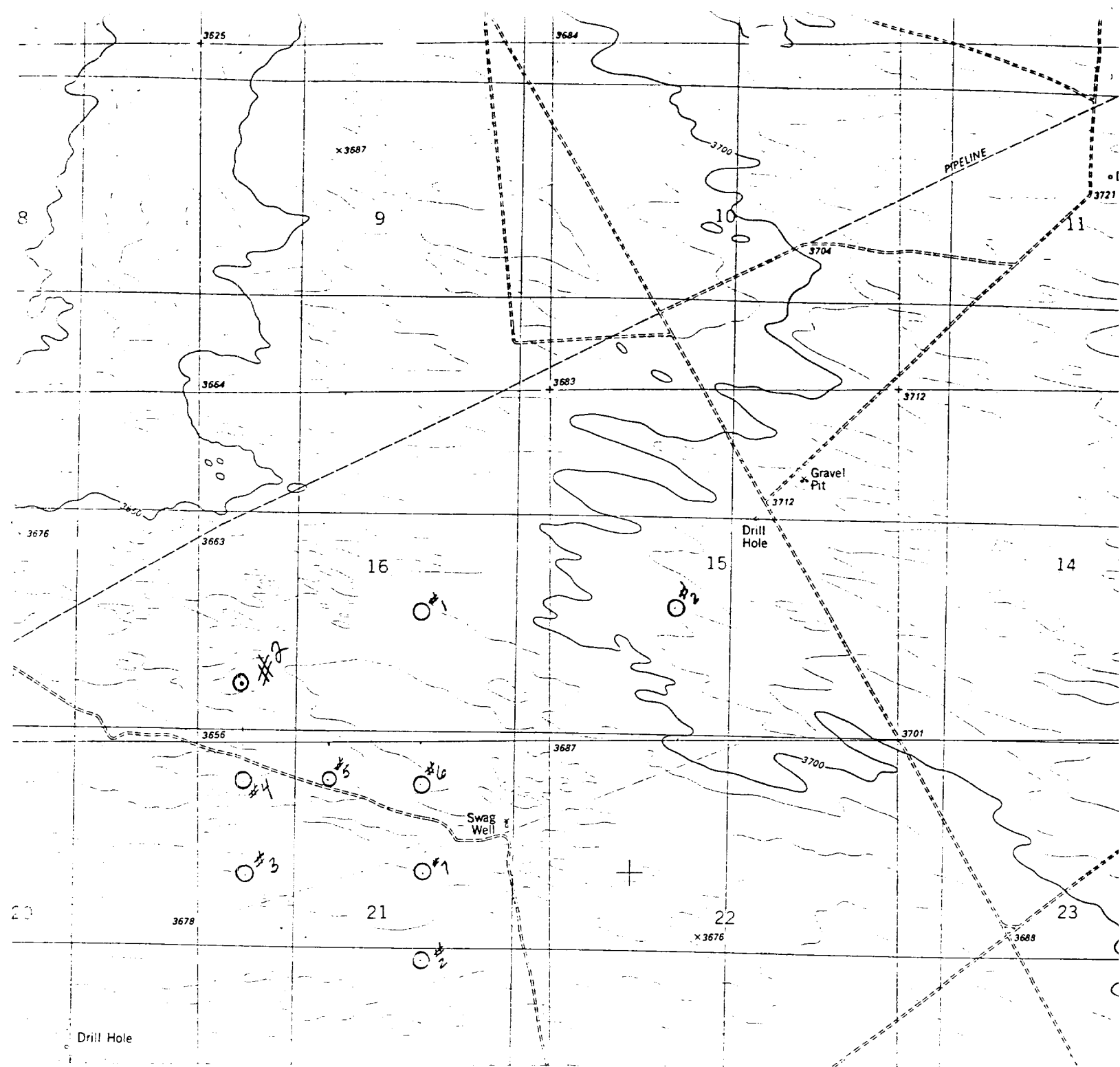
BASIN SURVEYS P.O. BOX 1786-HOBBS, NEW MEXICO

W.O. Number: 8036 Drawn By: K. GOAD

Date: 02-12-98 Disk: KJG #90 - 8036B.DWG

Survey Date: 02-11-98

Sheet 1 of 1 Sheets



PENWELL ENERGY INC.
 TOMCAT "16" FEDERAL #2
 660' FSL & 660' FWL
 Sec. 16, T-23-S, R-32-E,
 Lea County, New Mexico.

SCALE: 1"=2000'

BASIN SURVEYS

P.O. BOX 1786 - HOBBS, NEW MEXICO

2000' 0 2000' 4000 Feet

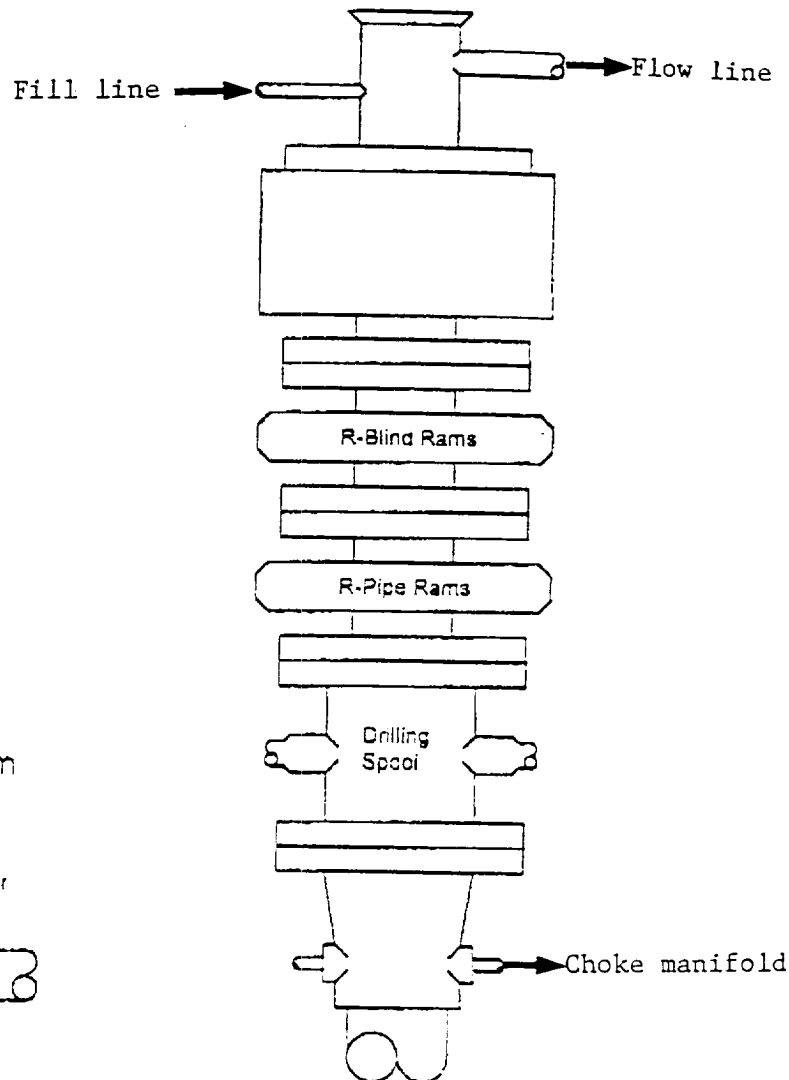
W.O. Number: 8036

Drawn By: K. GOAD

Survey Date: 02-11-98

Sheet 1 of 1 Sheets

BLOWOUT PREVENTER SYSTEM



Type 900 Series
3000 psi WP

Choke Manifold Assembly for 3M WP System

