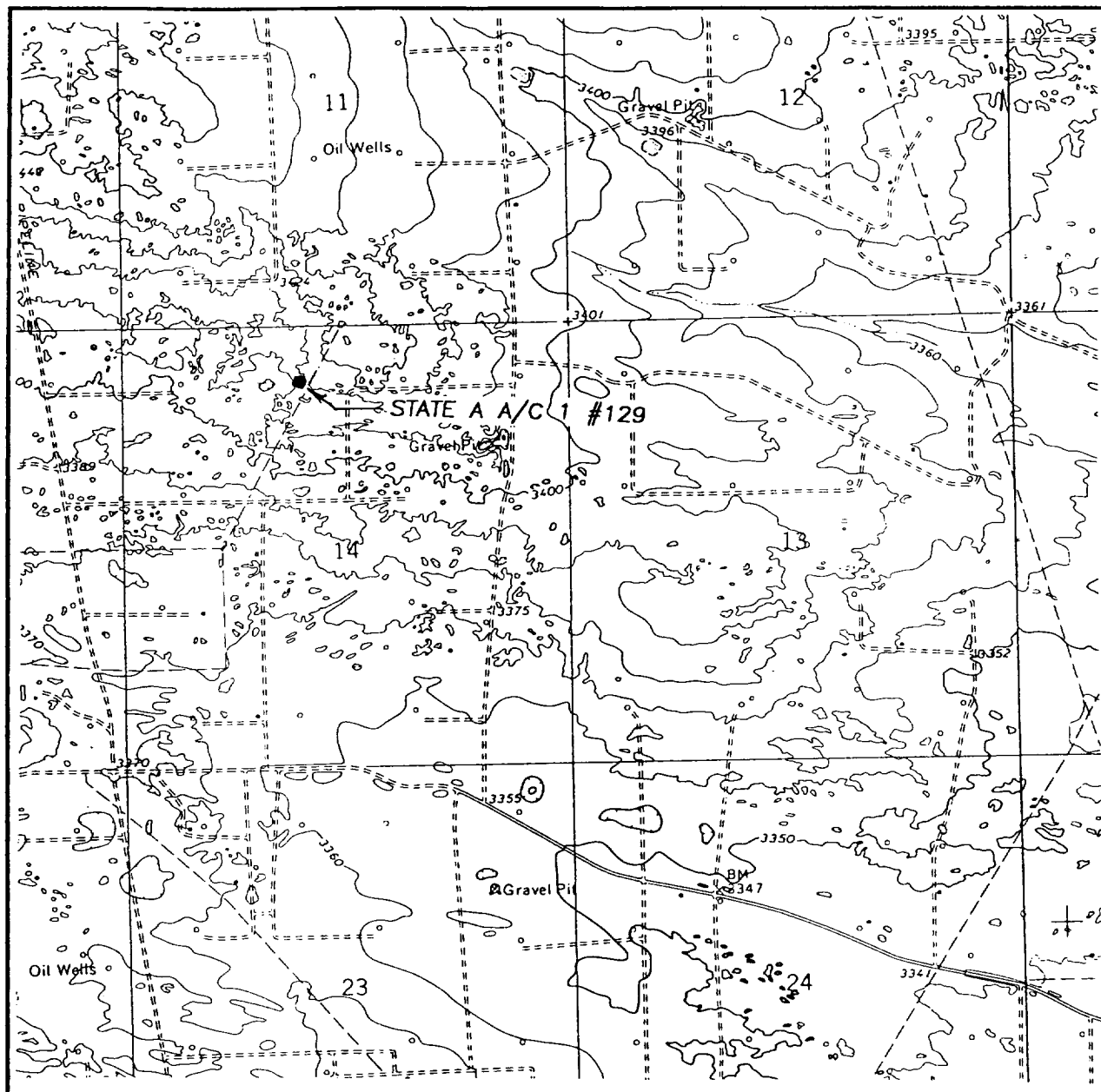


LOCATION VERIFICATION MAP



SCALE: 1" = 2000'

CONTOUR INTERVAL:
RATTLESNAKE CANYON, N.M. - 10'

SEC. 14 TWP. 23-S RGE. 36-E

SURVEY N.M.P.M.

COUNTY LEA

DESCRIPTION 660' FNL & 2130' FWL

ELEVATION 3420

OPERATOR RAPTOR RESOURCES, INC.

LEASE STATE A A/C 1

U.S.G.S. TOPOGRAPHIC MAP
RATTLESNAKE CANYON, N.M.

JOHN WEST SURVEYING
HOBBS, NEW MEXICO
(505 393-3117)

Proposed Well Plan
State "A" A/C 1, Well # 129
660' FNL & 2130' FWL, Sec. 14, T 23S, R 36E, Unit Ltr 'C', Lea Co.

1. Drill 12 ¼" hole from surface to 600'.
2. Run 8 5/8" 24# casing to 600' cement W/ 240 sx cement with additives to Surface.
3. Drill 7 7/8" hole to 3800'.
4. Run 5 ½" 15.5# casing to 3800' cement W/ 490 sx cement with additives to surface.
5. Perforate the Queen formation from 3500' to 3700'
6. Acid and Frac treatment will be determined after looking at the Logs.
7. Complete and put on production.