

District I
PO Box 196J, Hobbs, NM 88241-1980

District II
811 South First, Artesia, NM 88210

District III
1000 Rio Brazos Rd., Aztec, NM 87410

District IV
2040 South Pacheco, Santa Fe, NM 87505

State of New Mexico
Energy, Minerals & Natural Resources Department

OIL CONSERVATION DIVISION
2040 South Pacheco
Santa Fe, NM 87505

Form C-101
Revised October 18, 1994
Instructions on back
Submit to Appropriate District Office
State Lease - 6 Copies
Fee Lease - 5 Copies

☐ AMENDED REPORT

APPLICATION FOR PERMIT TO DRILL, RE-ENTER, DEEPEN, PLUGBACK, OR ADD A ZONE

¹ Operator Name and Address CONCHO RESOURCES INC. 110 W. LOUISIANA STE 410 MIDLAND TX 79701		² OGRID Number 166111
		³ API Number 30 - 025- 34949
⁴ Property Code 24223	⁵ Property Name TOMCAT '16' STATE	⁶ Well No. 6

⁷Surface Location

UL or lot no.	Section	Township	Range	Lot Idn	Feet from the	North/South line	Feet from the	East/West Line	County
H	16	23S	32E		1980	NORTH	660	EAST	LEA

⁸Proposed Bottom Hole Location If Different From Surface

UL or lot no.	Section	Township	Range	Lot Idn	Feet from the	North/South line	Feet from the	East/West Line	County
H	16	23S	32E		1980	NORTH	660	EAST	LEA
⁹ Proposed Pool 1 DIAMONDTAIL DELAWARE SW					¹⁰ Proposed Pool 2				

¹¹ Work Type Code N	¹² Well Type Code O	¹³ Cable/Rotary C	¹⁴ Lease Type Code S	¹⁵ Ground Level Elevation 1850
¹⁶ Multiple No	¹⁷ Proposed Depth 9100	¹⁸ Formation DELAWARE	¹⁹ Contractor	²⁰ Spud Date

²¹Proposed Casing and Cement Program

Hole Size	Casing Size	Casing weight/foot	Setting Depth	Sacks of Cement	Estimated TOC
25"	20"	CONDUCTOR	40'	REDI MIX	SURF
17-1/2"	13-3/8	48	650'	550 sx	SURF
11"	8-5/8	32	4900'	1400 sx	450'
7-7/8"	5-1/2	15.5 & 17	9100'	550 sx	7600'

²²Describe the proposed program. If this application is to DEEPEN or PLUG BACK give the data on the present productive zone and proposed new productive zone. Describe the blowout prevention program, if any. Use additional sheets if necessary.

CONCHO RESOURCES INC. RESPECTFULLY REQUESTS APPROVAL TO DRILL THE TOMCAT 16 STATE #6 WELL
ACCORDING TO THE FOLLOWING PROCEDURE:

1. Drill 25" hole to 40'. Set 40' of 20" conductor & cmt to surf.
2. Drill 17-1/2" hole to 650'. Run & set 650' of 13-3/8" 48# csg. Cmt w/ 550 sx C cmt. Circ cmt to surf.
2. Drill 11" hole to 4900'. Run & set 4900' of 8-5/8" 32# csg. Cmt w/ 1400 sx C cmt. Est. top of cmt @ 450'.
3. Drill 7-7/8" hole to 9100'. Run & set 9100' of 5-1/2" 15.5# & 17# csg. Cmt w/ 550 sx C cmt. Est. top of cmt @ 7600'.

²³I hereby certify that the information given above is true and complete to the best of my knowledge and belief.

Signature:

Printed name: Terri Stathem

Title: Production Analyst

Date: 02-23-00

Phone: 915-683-7443

OIL CONSERVATION DIVISION

Approved By:

Title:

Approval Date:

Expiration Date:

Conditions of Approval:
Attached: ☐

Permit Expires 1 Year From Approval
Date Unless Drilling Underway

DISTRICT I
P. O. Box 1980
Hobbs, NM 88241-1980

DISTRICT II
P. O. Drawer DD
Artesia, NM 88211-0719

DISTRICT III
1000 Rio Brazos Rd.
Aztec, NM 87410

DISTRICT IV
P. O. Box 2088
Santa Fe, NM 87507-2088

State of New Mexico
Energy, Minerals, and Natural Resources Department

Form C-102
Revised 02-10-94
Instructions on back

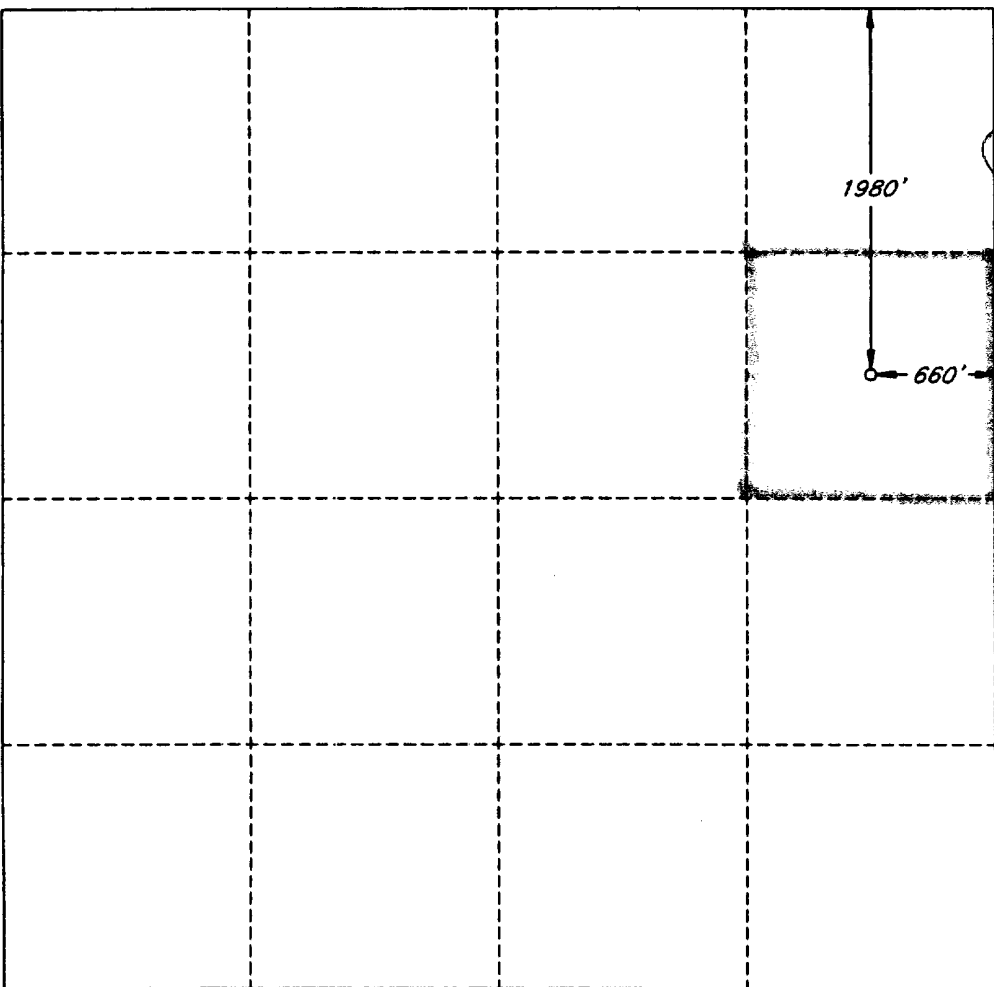
Submit to the Appropriate
District Office
State Lease - 4 copies
Fee Lease - 3 copies

OIL CONSERVATION DIVISION

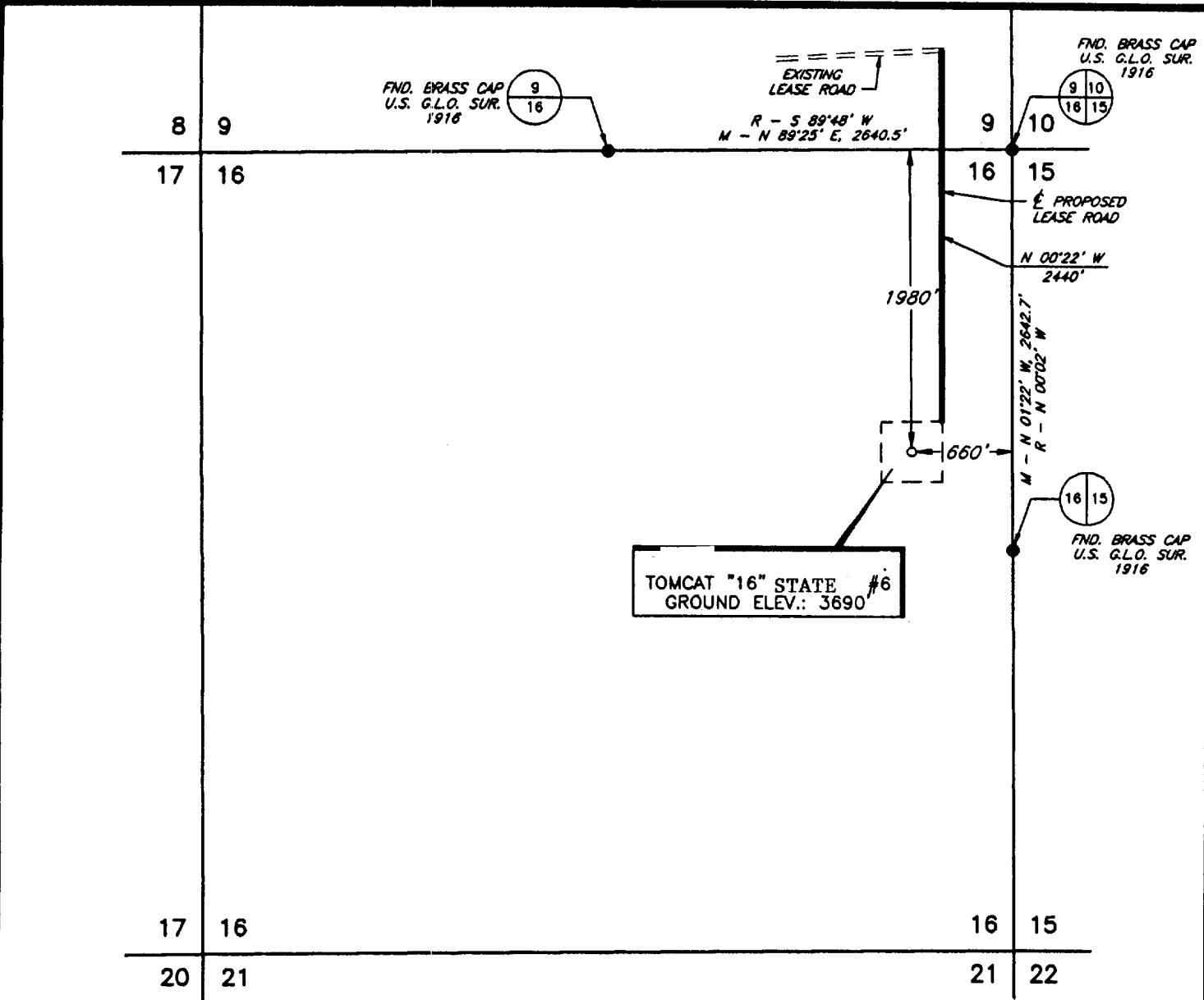
P. O. Box 2088
Santa Fe, New Mexico 87504-2088

☐ AMENDED REPORT

WELL LOCATION AND ACREAGE DEDICATION PLAT

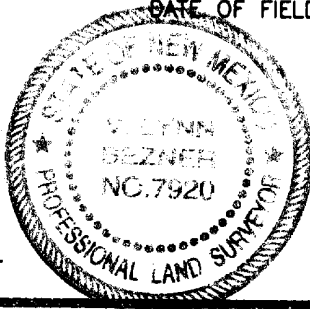
1 API Number 30-025-34949		2 Pool Code 96916		3 Pool Name Diamondtail Delaware SW					
4 Property Code 24223		5 Property Name TOMCAT '16' STATE						6 Well Number 6	
7 OGRID No. 166111		8 Operator Name Concho Resources Inc.						9 Elevation 1850'	
10 SURFACE LOCATION									
UL or lot no. H	Section 16	Township 23 SOUTH	Range 32 EAST, N.M.P.M.	Lot Ida	Feet from the 1980'	North/South line NORTH	Feet from the 660'	East/West line EAST	County LEA
"BOTTOM HOLE LOCATION IF DIFFERENT FROM SURFACE"									
UL or lot no.	Section	Township	Range	Lot Ida	Feet from the	North/South line	Feet from the	East/West line	County
12 Dedicated Acres 40		13 Joint or Infill		14 Consolidation Code		15 Order No.			
NO ALLOWABLE WELL BE ASSIGNED TO THIS COMPLETION UNTIL ALL INTERESTS HAVE BEEN CONSOLIDATED OR A NON-STANDARD UNIT HAS BEEN APPROVED BY THE DIVISION									
						OPERATOR CERTIFICATION I hereby certify that the information contained herein is true and complete to the best of my knowledge and belief. Signature: <i>[Signature]</i> Printed Name: Terri Statnem Title: Production Analyst Date: 2/24/00			
						SURVEYOR CERTIFICATION I hereby certify that the well location shown on this plat was plotted from field notes of actual surveys made by me or under my supervision, and that the same is true and correct to the best of my belief.			
						Date of Survey FEBRUARY 8, 2000			
						Signature and Seal of Professional Surveyor <i>[Signature]</i> Certificate No. V. L. BEZNER R.P.S. #7920 JOB #67529 / 47 SW / V.H.B.			

PLAT SHOWING PROPOSED
WELL LOCATION AND LEASE RO. IN
SECTION 16, T-23-S, R-32-E, N.M.P.M.
LEA COUNTY, NEW MEXICO

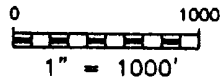


I, V. L. BEZNER, A PROFESSIONAL SURVEYOR IN THE STATE OF NEW MEXICO AND AUTHORIZED AGENT OF TOPOGRAPHIC LAND SURVEYORS, HEREBY CERTIFY THIS PLAT TO BE A TRUE REPRESENTATION OF A SURVEY PERFORMED IN THE FIELD UNDER MY SUPERVISION, THAT I AM RESPONSIBLE FOR THIS SURVEY, THAT THIS SURVEY IS TRUE AND CORRECT TO THE BEST OF MY KNOWLEDGE AND BELIEF AND THAT THIS PLAT AND FIELD SURVEY UPON WHICH IT IS BASED MEET THE MINIMUM STANDARDS FOR SURVEYING IN NEW MEXICO. (RULE 500.6 EASEMENT SURVEYING)

V. L. BEZNER, P.S. NO. 7920



DATE OF FIELD WORK: FEBRUARY 8, 2000



NO.	REVISION	DATE	BY
SURVEYED BY: R.J.O.			
DRAWN BY: V.H.B.			
APPROVED BY: V.L.B.			

CONCHO RESOURCES INC.

SURVEYING AND MAPPING BY
TOPOGRAPHIC LAND SURVEYORS
MIDLAND, TEXAS

SCALE:	AS SHOWN
DATE:	FEBRUARY 8, 2000
JOB NO.:	67529-F
QUAD NO.:	47 SW
SHEET :	1 OF 1

ELF
ABOVE DATE DOES NOT
INDICATE WHEN
CONFIDENTIAL LOGS
WILL BE RELEASED

CONFIDENTIAL
LOGS