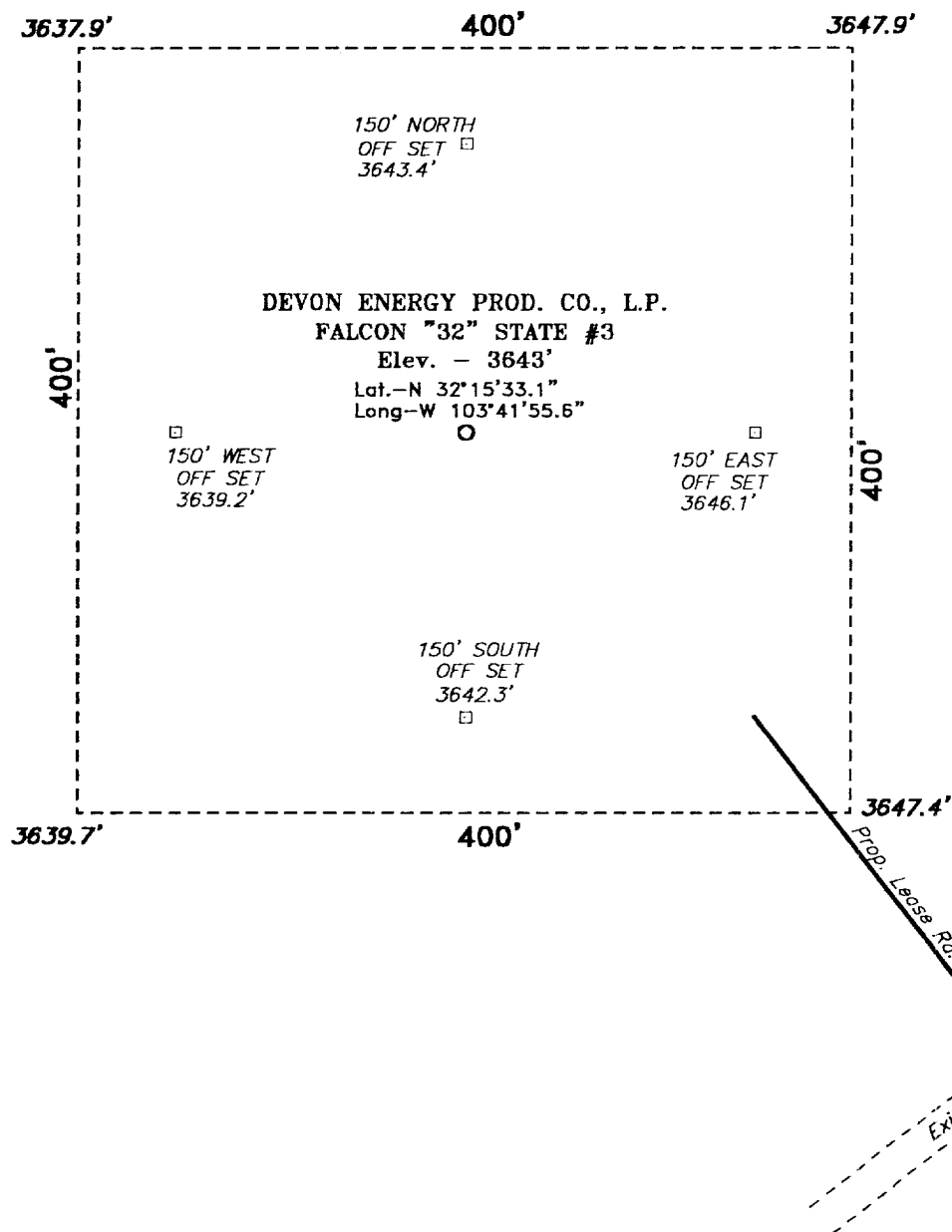
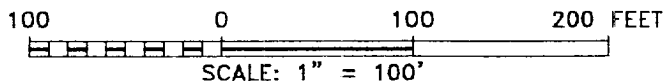


**SECTION 32, TOWNSHIP 23 SOUTH, RANGE 32 EAST, N.M.P.M.,  
LEA COUNTY, NEW MEXICO.**



**Directions to Location:**

FROM THE JUNCTION OF STATE HWY 128 AND CO.  
RD. 787, GO SOUTHEAST ON STATE HWY 128 FOR  
APPROX. 6.25 MILES TO A LEASE ROAD; THENCE  
NORTHEAST ON LEASE ROAD FOR APPROX. 2.0 MILES  
TO THE PROPOSED LEASE ROAD.



**DEVON ENERGY PROD. CO., L.P.**

REF: FALCON "32" STATE No. 3 / Well Pad Topo

THE FALCON "32" STATE No. 3 LOCATED 1980' FROM THE  
SOUTH LINE AND 1980' FROM THE WEST LINE OF  
SECTION 32, TOWNSHIP 23 SOUTH, RANGE 32 EAST,  
N.M.P.M., LEA COUNTY, NEW MEXICO.

**BASIN SURVEYS** P.O. BOX 1786 - HOBBS, NEW MEXICO

W.O. Number: 1625 Drawn By: **K. GOAD**

Date: 07-03-2001 Disk: KJG CD#4 - 1625A.DWG

Survey Date: 06-28-2001

Sheet 1 of 1 Sheets