

APPROVED

COPY TO O. C. C.

Budget Bureau No. 42-R358.4.
Approval expires 12-31-60.

Form 9-331a
(Feb. 1951)

MAR 21 1961 (SUBMIT IN TRIPLICATE)

HOBBS

Land Office Las Cruces

Lease No. LC 062269-4

Unit E

E. W. STANDLEY
DISTRICT ENGINEER

UNITED STATES
DEPARTMENT OF THE INTERIOR
GEOLOGICAL SURVEY

| | | | | |
|---|--|--|--|--|
| | | | | |
| | | | | |
| X | | | | |
| | | | | |
| | | | | |

SUNDRY NOTICES AND REPORTS ON WELLS

| | | | |
|--|-------------------------------------|--|--|
| NOTICE OF INTENTION TO DRILL | <input checked="" type="checkbox"/> | SUBSEQUENT REPORT OF WATER SHUT-OFF | |
| NOTICE OF INTENTION TO CHANGE PLANS | | SUBSEQUENT REPORT OF SHOOTING OR ACIDIZING | |
| NOTICE OF INTENTION TO TEST WATER SHUT-OFF | | SUBSEQUENT REPORT OF ALTERING CASING | |
| NOTICE OF INTENTION TO RE-DRILL OR REPAIR WELL | | SUBSEQUENT REPORT OF RE-DRILLING OR REPAIR | |
| NOTICE OF INTENTION TO SHOOT OR ACIDIZE | | SUBSEQUENT REPORT OF ABANDONMENT | |
| NOTICE OF INTENTION TO PULL OR ALTER CASING | | SUPPLEMENTARY WELL HISTORY | |
| NOTICE OF INTENTION TO ABANDON WELL | | | |

(INDICATE ABOVE BY CHECK MARK NATURE OF REPORT, NOTICE, OR OTHER DATA)

March 20, 19 61

U. S. Smelting-USA

Well No. 2 is located 1980 ft. from [N] line and 660 ft. from [W] line of sec. 22

SW 1/4 of NW 1/4 Sec. 22

(1/4 Sec. and Sec. No.)

24-S

(Twp.)

32-E

(Range)

RMPN

(Meridian)

Undesignated

(Field)

Lee

(County or Subdivision)

New Mexico

(State or Territory)

The elevation of the derrick floor above sea level is 3590 ft. est.

DETAILS OF WORK

(State names of and expected depths to objective sands; show sizes, weights, and lengths of proposed casings; indicate mudding jobs, cementing points, and all other important proposed work)

See attached program and plats.

I understand that this plan of work must receive approval in writing by the Geological Survey before operations may be commenced.

Company TEENECO CORPORATION

Address Box 307

Hobbs, New Mexico

By A. W. Lang A. W. Lang

Title District Production Superintendent

NEW MEXICO OIL CONSERVATION COMMISSION
WELL LOCATION AND ACREAGE DEDICATION PLAT

FORM C-128
Revised 5/1/57

SEE INSTRUCTIONS FOR COMPLETING THIS FORM ON THE REVERSE SIDE

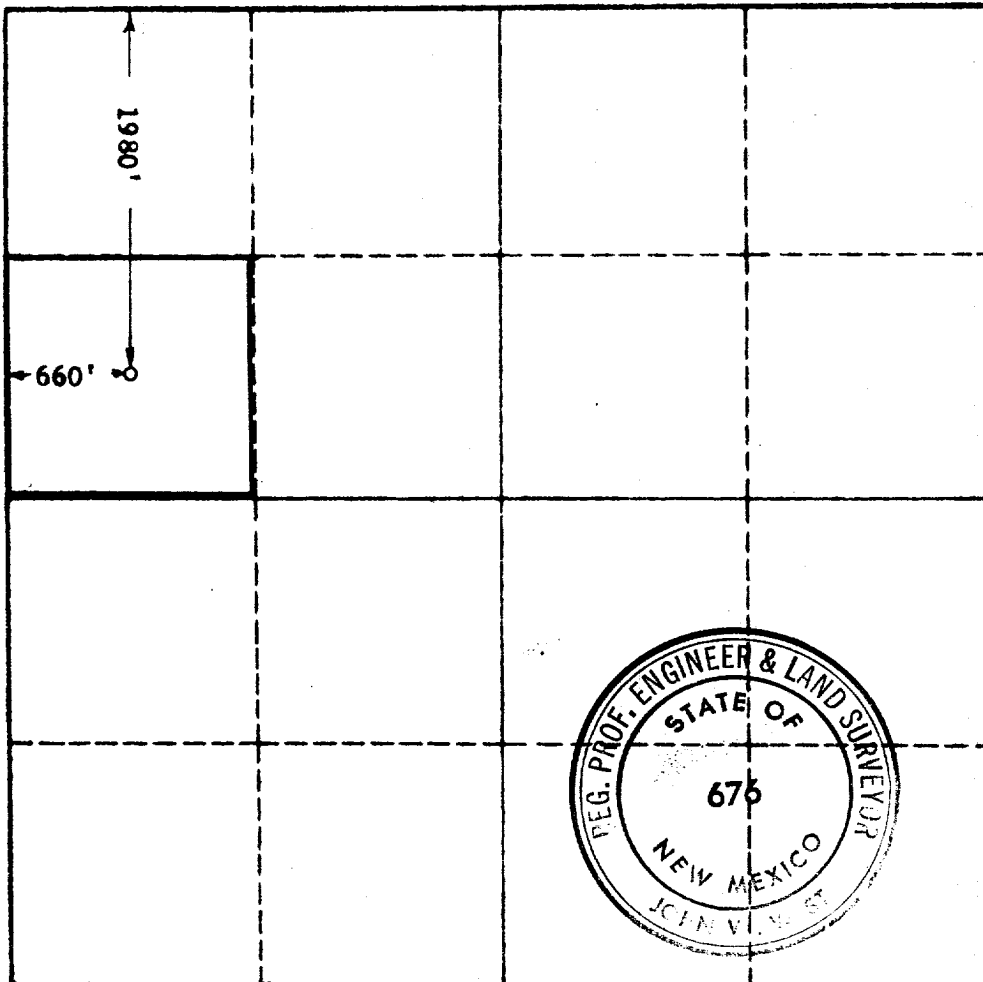
SECTION A

| | | | | |
|---|---|------------------------------------|-----------------------------|----------------------|
| Operator TENNECO CORPORATION | | Lease U. S. SMELTING USA | | Well No. 2 |
| Unit Letter E | Section 22 | Township 24 SOUTH | Range 32 EAST | County LEA |
| Actual Footage Location of Well: 1980 feet from the NORTH line and 660 feet from the WEST line | | | | |
| Ground Level Elev. 3770 | Producing Formation Schumann Sand | Pool Undiscovered | Dedicated Acreage: Acres | |

1. Is the Operator the only owner in the dedicated acreage outlined on the plat below? YES ☒ NO ☐ "Owner" means the person who has the right to drill into and to produce from any pool and to appropriate the production either for himself or for himself and another. (65-3-29 (e) NMSA 1955 Comp.)
2. If the answer to question one is "no," have the interests of all the owners been consolidated by communitization agreement or otherwise? YES ☐ NO ☐ If answer is "yes," Type of Consolidation _____
3. If the answer to question two is "no," list all the owners and their respective interests below:

| Owner | Land Description |
|-------|------------------|
| | |
| | |

SECTION B



CERTIFICATION

I hereby certify that the information in SECTION A above is true and complete to the best of my knowledge and belief

Name **A. V. Lang**
Position **Asst. Prof. Superintendent**
TENNECO CORPORATION
Date **March 20, 1961**

I hereby certify that the well location shown on the plat in SECTION B was plotted from field notes of actual surveys made by me or under my supervision, and that the same is true and correct to the best of my knowledge and belief.

Date Surveyed **3-18-1961**
Registered Professional Engineer and/or Land Surveyor, **JOHN W. WEST**
John W. West
Certificate No. **N.M. - P.E. & L.S. NO. 676**

0 330 660 990 1320 1650 1980 2310 2640 2000 1500 1000 500 0

**TENNECO OIL COMPANY
PROGNOSIS TO DRILL AND COMPLETE**

Lease: U. S. Smelting-USA

Well No.: 2

District: Hobbs

Field: Double "X" Area

Location: 1980' FWL & 660' FWL, Sec. 22, T-24-S, R-32-E, Lea County, New Mexico

Projected Horizon: Delaware Sand

Estimated TD: 5300'

Estimated Elevation: 3590' GL

Drilling, Casing, and Cement:

1. Drill 12-1/4" hole to approx. 375'.
2. Cement 8-5/8" csg @ approx. 375' w/sufficient volume to circulate.
3. WOC 24 hrs. Release pressure and install BOP after 12 hrs. Pressure test csg w/600 psi after WOC 18 hrs.
4. Drill 7-7/8" hole to Delaware Sand core point @ approx. 4875'. Exact core depth to be determined by wellsite Exploitation Engineer.
5. Core from 4875' to 5300' w/7-13/16" diamond core bit.
6. Set 5-1/2" csg @ TD and cement w/100 sz of 50-50 Pennix "S" and regular w/2% gal followed by 50 sz of regular Latex cement.
7. WOC 18 hrs. Run temperature survey, release pressure if float holds; otherwise, hold pressure on csg for 8 hrs.
8. Run tbg and pressure test csg w/1500 psi for 30 minutes after 18 hrs.
9. Displace water w/oil.
10. Proceed w/completion prognosis (to be determined at TD).

Drilling Mud:

1. Drill w/fresh water native mud to TD. Mud properties will be adjusted to meet requirements for good samples, coring and drill stem tests. Prior to coring or running a drill stem test, the mud should have the following properties: Viscosity 35-40, water loss 10cc or less in 30 minutes, filter cake 2/32" or less.
2. No oil will be added without consent of wellsite Exploitation Engineer.

Coring:

1. Eight cores will be cut from 4875' to 5275'.

Drilling Time:

1. Record 1' drilling time from surface to TD using geolograph.
2. Record 2' drilling time in addition to geolograph while coring.

Drill Pipe Measurements:

1. Tally drill pipe on last two trips prior to reaching casing point.
2. Tally drill pipe in strain under company supervision at all casing points, coring points, drill stem test points, and at TD.

... ..

... ..

... ..

... ..

... ..

... ..

... ..

... ..

... ..

... ..

... ..

... ..

... ..

... ..

... ..

... ..

... ..

... ..

... ..

... ..

... ..

... ..

... ..

... ..

... ..

... ..

... ..

Samples:

1. Catch one set of 10' drilling samples from 4750' to TD unless otherwise directed by wellsite Exploitation Engineer.
2. No time lag will be made in catching samples and 15 minute circulating samples will be caught for a period of one hour while circulating unless otherwise directed by wellsite Exploitation Engineer.
3. Samples will be washed thoroughly, sacked and labeled as directed by the wellsite Exploitation Engineer.
4. Two one-quart samples will be caught and labeled of any fluid recovered by drill stem tests.

Hole Deviation:

1. Run hole deviation every 100' on surface hole.
2. Run hole deviation survey on each trip for bit or every 500', whichever occurs sooner.
3. Maximum hole deviation from surface to TD will be 4 degrees.
4. If hole deviation changes more than 1-1/2 degrees in any 100' interval, a string runner will be run to wipe out dog leg.
5. If hole deviation changes more than 2 degrees in any 100' interval, the hole shall be plugged back and straightened out.

Survey:

1. Run GR/Sonic log from casing to TD and Laterolog from approx. 4850' to TD.
2. Run temperature survey on 5-1/2" casing string after WOC 6 hrs.
3. Run GR correlation log through pay section after cementing 5-1/2" casing.

Completion:

To be determined at TD.

APPROVED: ORIGINAL
SIGNED BY A. W. LANG
A. W. Lang

APPROVED: ORIGINAL SIGNED BY:
C. W. MANCE
C. W. Mance

LEL/nl

1. The first part of the document is a letter from the President of the United States to the Congress, dated January 1, 1861. It is a very important document, as it sets out the President's policy for the new year. The President, Abraham Lincoln, is very clear in his statement of policy. He says that he will not interfere with the rights of the States, but he will also not allow the States to secede from the Union. He says that he will maintain the Union, and he will do so by the sword if necessary. This is a very strong statement, and it shows that the President is determined to maintain the Union at all costs.

2. The second part of the document is a report from the Secretary of the Interior, dated January 1, 1861. It is a very important document, as it sets out the Secretary's policy for the new year. The Secretary, John P. Kennedy, is very clear in his statement of policy. He says that he will not interfere with the rights of the States, but he will also not allow the States to secede from the Union. He says that he will maintain the Union, and he will do so by the sword if necessary. This is a very strong statement, and it shows that the Secretary is determined to maintain the Union at all costs.

3. The third part of the document is a report from the Secretary of the Treasury, dated January 1, 1861. It is a very important document, as it sets out the Secretary's policy for the new year. The Secretary, William A. Richardson, is very clear in his statement of policy. He says that he will not interfere with the rights of the States, but he will also not allow the States to secede from the Union. He says that he will maintain the Union, and he will do so by the sword if necessary. This is a very strong statement, and it shows that the Secretary is determined to maintain the Union at all costs.

4. The fourth part of the document is a report from the Secretary of the War, dated January 1, 1861. It is a very important document, as it sets out the Secretary's policy for the new year. The Secretary, John C. Breckinridge, is very clear in his statement of policy. He says that he will not interfere with the rights of the States, but he will also not allow the States to secede from the Union. He says that he will maintain the Union, and he will do so by the sword if necessary. This is a very strong statement, and it shows that the Secretary is determined to maintain the Union at all costs.

5. The fifth part of the document is a report from the Secretary of the Navy, dated January 1, 1861. It is a very important document, as it sets out the Secretary's policy for the new year. The Secretary, Gideon Welles, is very clear in his statement of policy. He says that he will not interfere with the rights of the States, but he will also not allow the States to secede from the Union. He says that he will maintain the Union, and he will do so by the sword if necessary. This is a very strong statement, and it shows that the Secretary is determined to maintain the Union at all costs.

6. The sixth part of the document is a report from the Secretary of the State, dated January 1, 1861. It is a very important document, as it sets out the Secretary's policy for the new year. The Secretary, William L. Gales, is very clear in his statement of policy. He says that he will not interfere with the rights of the States, but he will also not allow the States to secede from the Union. He says that he will maintain the Union, and he will do so by the sword if necessary. This is a very strong statement, and it shows that the Secretary is determined to maintain the Union at all costs.

7. The seventh part of the document is a report from the Secretary of the War, dated January 1, 1861. It is a very important document, as it sets out the Secretary's policy for the new year. The Secretary, John C. Breckinridge, is very clear in his statement of policy. He says that he will not interfere with the rights of the States, but he will also not allow the States to secede from the Union. He says that he will maintain the Union, and he will do so by the sword if necessary. This is a very strong statement, and it shows that the Secretary is determined to maintain the Union at all costs.