

District I  
1625 N. French Dr., Hobbs. NM 88240

State of New Mexico  
Energy, Minerals & Natural Resources Department

Revised February 21, 1994  
instructions on back

District II  
PO Drawer DD, Artesia, NM 88211-0719

District III  
1000 Rio Brazos Rd. Aztec, NM 87410

District IV  
PO Box 2088, Santa Fe. NM 87504-2088

OIL CONSERVATION DIVISION  
PO Box 2088  
Santa Fe, NM 87504-2088

Submit to Appropriate District Office  
State Lease - 4 Copies  
Fee Lease - 3 Copies

☐ AMENDED REPORT

WELL LOCATION AND ACREAGE DEDICATION PLAT

API Number 30-025- 09407		2 Pool Code 79240	3 Pool Name Jalmat Tansill Yates 7 Rvrs (Pro Gas)	
4 Property Code 24669	5 Property Name State A A/C 1			6 Well Number 53
7 OGRID No. 162791	8 Operator Name Raptor Resources			9 Elevation

10 Surface Location

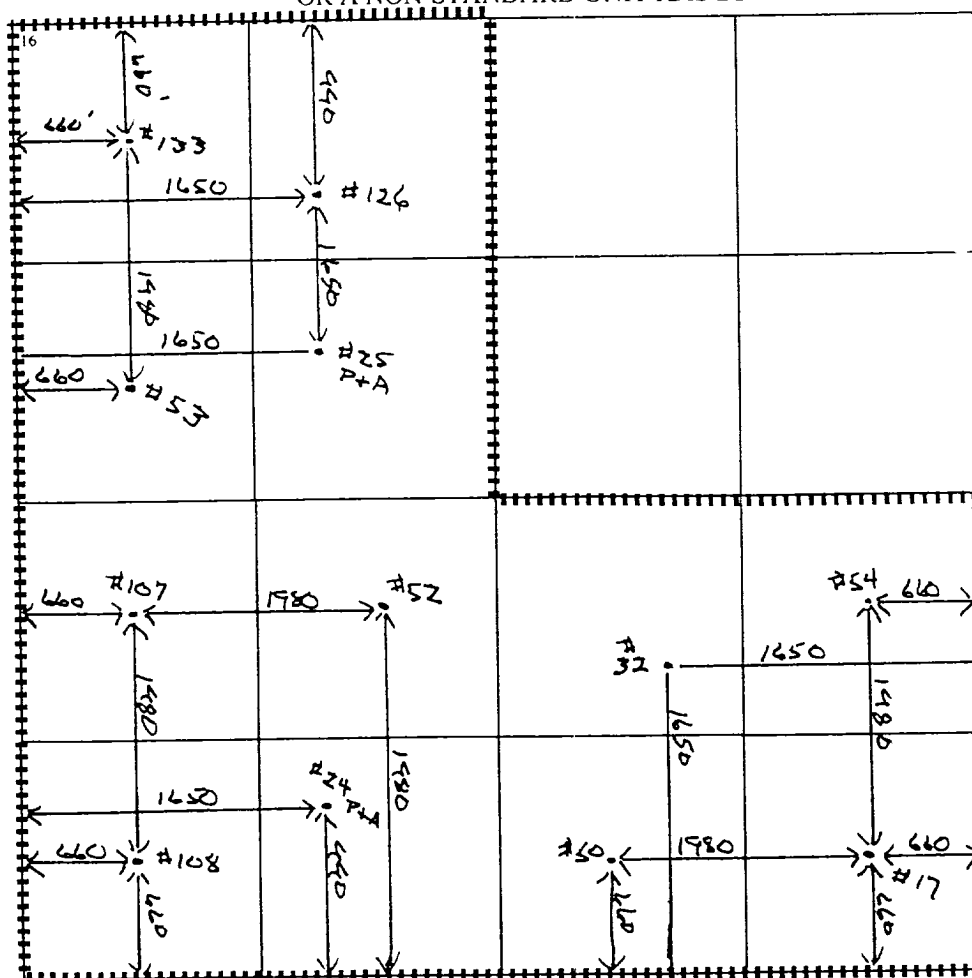
UL or lot no.	Section	Township	Range	Lot Idn	Feet from the	North/South line	Feet from the	East/West line	County
E	24	23S	36E		1980	North	660	West	Lea

11 Bottom Hole Location If Different From Surface

UL or lot no.	Section	Township	Range	Lot Idn	Feet from the	North/South line	Feet from the	East/West line	County

12 Dedicated Acres 480	13 Joint or Infill	14 Consolidation Code	15 Order No. R-11590	Applied For
---------------------------	--------------------	-----------------------	-------------------------	-------------

NO ALLOWABLE WILL BE ASSIGNED TO THIS COMPLETION UNTIL ALL INTERESTS HAVE BEEN CONSOLIDATED  
OR A NON-STANDARD UNIT HAS BEEN APPROVED BY THE DIVISION



17 OPERATOR CERTIFICATION

I hereby certify that the information contained herein is true and complete to the best of my knowledge and belief

*Bill R. Keathly*  
Signature  
Bill R. Keathly  
Printed Name  
Regulatory Agent  
Title  
8-6-01  
Date

18 SURVEYOR CERTIFICATION

I hereby certify that the well location shown on this plat was plotted from field notes of actual surveys made by me or under my supervision, and that the same is true and correct to the best of my belief.

Date of Survey  
Signature and Seal of Professional Surveyor:

Certificate Number

District IV  
PO Box 2088, Santa Fe. NM 87504-2088

OIL CONSERVATION DIVISION  
PO Box 2088  
Santa Fe, NM 87504-2088

Submit to Appropriate District Office  
State Lease - 4 Copies  
Fee Lease - 3 Copies

☐ AMENDED REPORT

API Number 30-025-09407		2 Pool Code 79240	3 Pool Name Jalmat, Tnsl, Yts, 7-Rivers (Pro Gas)	
4 Property Code 24669	5 Property Name State 'A' A/C 1		6 Well Number 53	
7 OGRID No. 162791	8 Operator Name Raptor Resources, Inc,		9 Elevation	

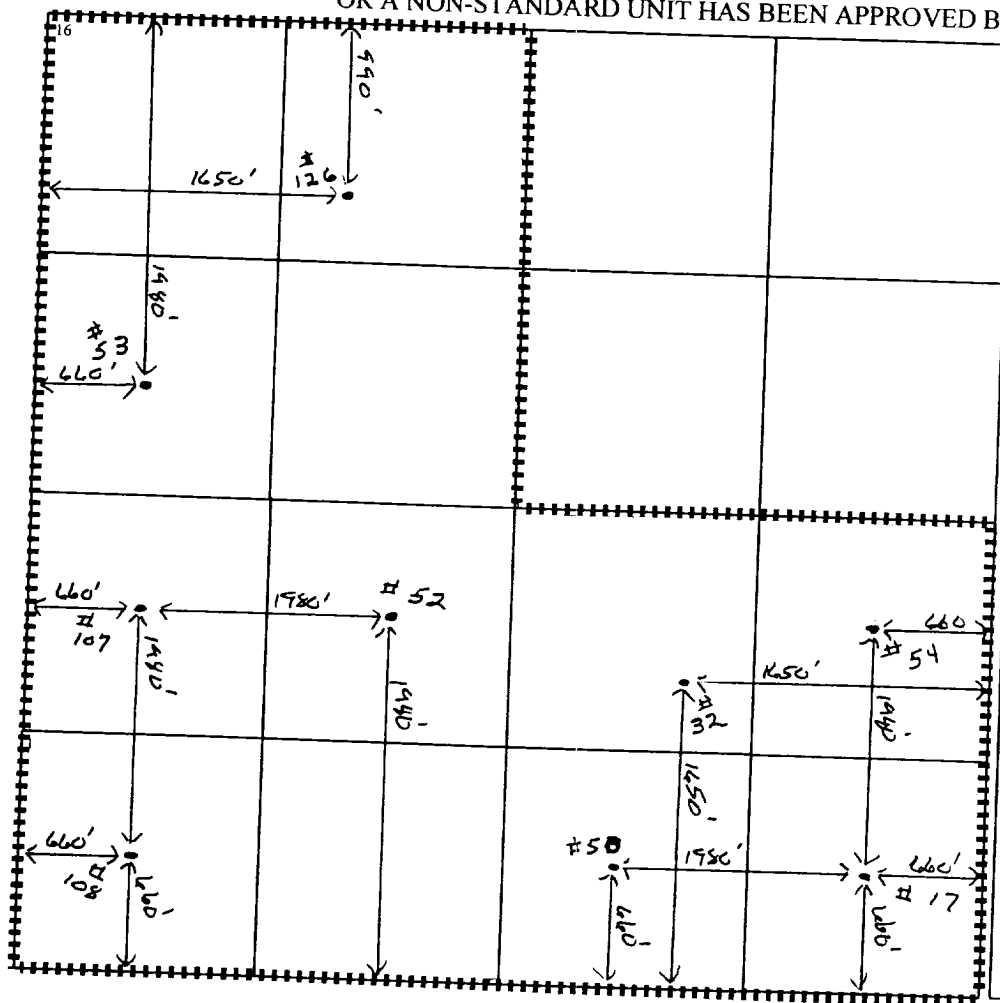
10 Surface Location									
UL or lot no.	Section	Township	Range	Lot Idn	Feet from the	North/South line	Feet from the	East/West line	County
E	24	23S	36E		1480	North	660	West	Lea

11 Bottom Hole Location If Different From Surface	
Range	Latitude

11 Bottom Hole Location If Different From Surface									
UL or lot no.	Section	Township	Range	Lot Idn	Feet from the	North/South line	Feet from the	East/West line	County
12 Dedicated Acres	13 Joint or Infill	14 Consolidation Code		15 Order No.					
480									

Applied For

NO ALLOWABLE WILL BE ASSIGNED TO THIS COMPLETION UNTIL ALL INTERESTS HAVE BEEN CONSOLIDATED  
OR A NON-STANDARD UNIT HAS BEEN APPROVED BY THE DIVISION



## 17 OPERATOR CERTIFICATION

I hereby certify that the information contained herein is true and complete to the best of my knowledge and belief

Signature

**Bill R. Keathly**

Printed Name \_\_\_\_\_

Regulatory Agent - Raptor

Title

9-22-99

Date \_\_\_\_\_

## 18 SURVEYOR CERTIFICATION

*I hereby certify that the well location shown on this plat was plotted from field notes of actual surveys made by me or under my supervision, and that the same is true and correct to the best of my belief.*

Date of Survey

Signature and Seal of Professional Surveyor:

Certificate Number

Submit to Appropriate  
District Office  
State Lease - 4 copies  
Fee Lease - 3 copies

State of New Mexico  
Energy, Minerals and Natural Resources Department

Form C-102  
Revised 1-1-89

OIL CONSERVATION DIVISION

P.O. Box 2088

Santa Fe, New Mexico 87504-2088

DISTRICT I

P.O. Box 1980, Hobbs, NM 88240

DISTRICT II

P.O. Drawer DD, Artesia, NM 88210

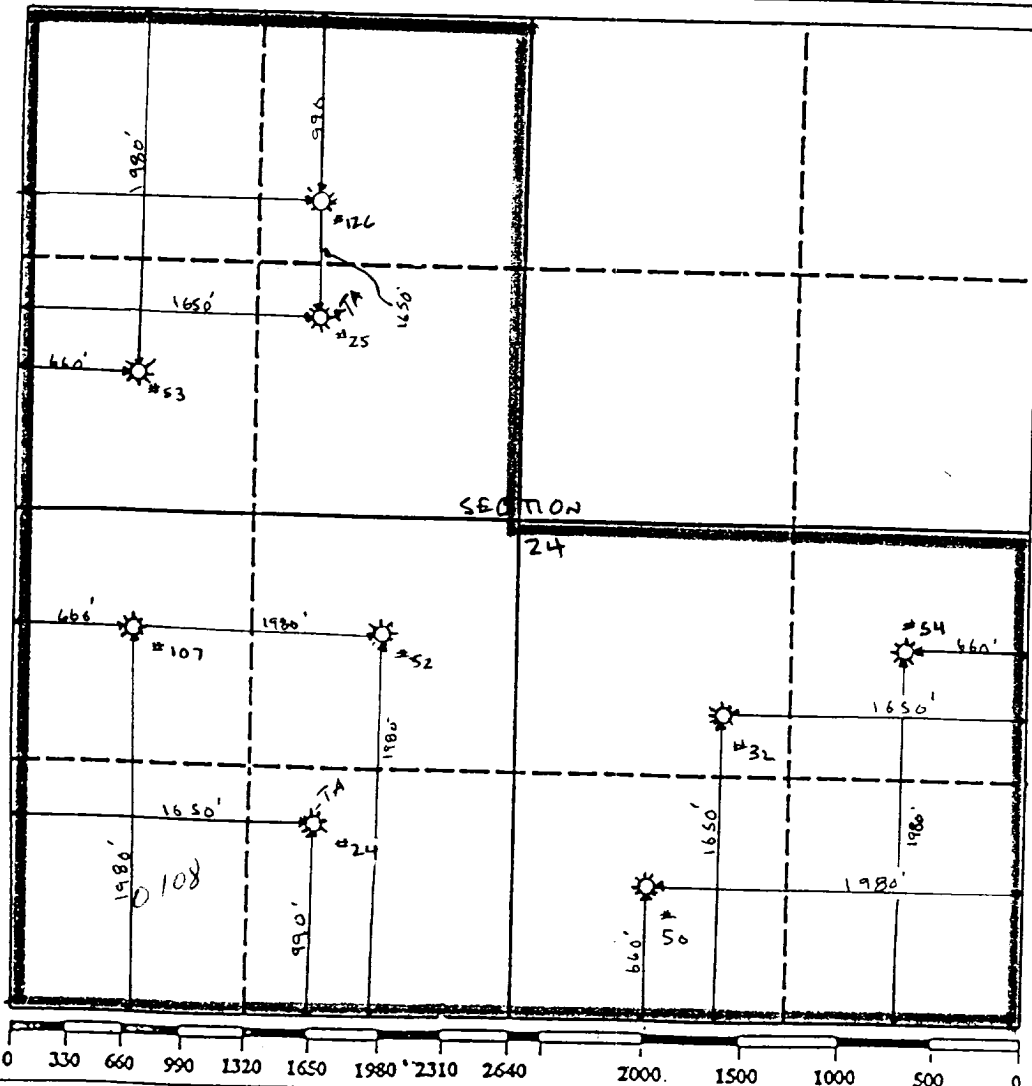
DISTRICT III

1000 Rio Brazos Rd., Aztec, NM 87410

WELL LOCATION AND ACREAGE DEDICATION PLAT

All Distances must be from the outer boundaries of the section

Operator Hal J. Rasmussen Operating, Inc.			Lease STATE "A" ACCOUNT 1		Well No. 53
Unit Letter E	Section 24	Township 23 S	Range 36 E	County Lea	
Actual Footage Location of Well: 1980 feet from the NORTH line and 660 feet from the WEST line					
Ground level Elev. YATES		Pool Jalmat-TNSL-YTS-7R		Dedicated Acreage: 480 Acres	
<p>1. Outline the acreage dedicated to the subject well by colored pencil or hatchure marks on the plat below.</p> <p>2. If more than one lease is dedicated to the well, outline each and identify the ownership thereof (both as to working interest and royalty).</p> <p>3. If more than one lease of different ownership is dedicated to the well, have the interest of all owners been consolidated by communitization, unitization, force-pooling, etc.? <input type="checkbox"/> Yes <input type="checkbox"/> No If answer is "yes" type of consolidation _____</p> <p>If answer is "no" list the owners and tract descriptions which have actually been consolidated. (Use reverse side of this form if necessary.) _____</p> <p>No allowable will be assigned to the well until all interests have been consolidated (by communitization, unitization, forced-pooling, or otherwise) or until a non-standard unit, eliminating such interest, has been approved by the Division.</p>					



<b>OPERATOR CERTIFICATION</b> I hereby certify that the information contained herein is true and complete to the best of my knowledge and belief.	
Signature	
Printed Name	Jay D. Cherski
Position	Agent
Company	Hal J. Rasmussen Operating, Inc.
Date	11/27/90
<b>SURVEYOR CERTIFICATION</b> I hereby certify that the well location shown on this plat was plotted from field notes of actual surveys made by me or under my supervision, and that the same is true and correct to the best of my knowledge and belief.	
Date Surveyed	
Signature & Seal of Professional Surveyor	
Certificate No.	0-9073

Submit to Appropriate  
District Office  
State Lease - 4 copies  
Fee Lease - 3 copies

State of New Mexico  
Energy, Minerals and Natural Resources Department

Form C-102  
Revised 1-1-89

OIL CONSERVATION DIVISION

P.O. Box 2088  
Santa Fe, New Mexico 87504-2088

DISTRICT I  
P.O. Box 1980, Hobbs, NM 88240

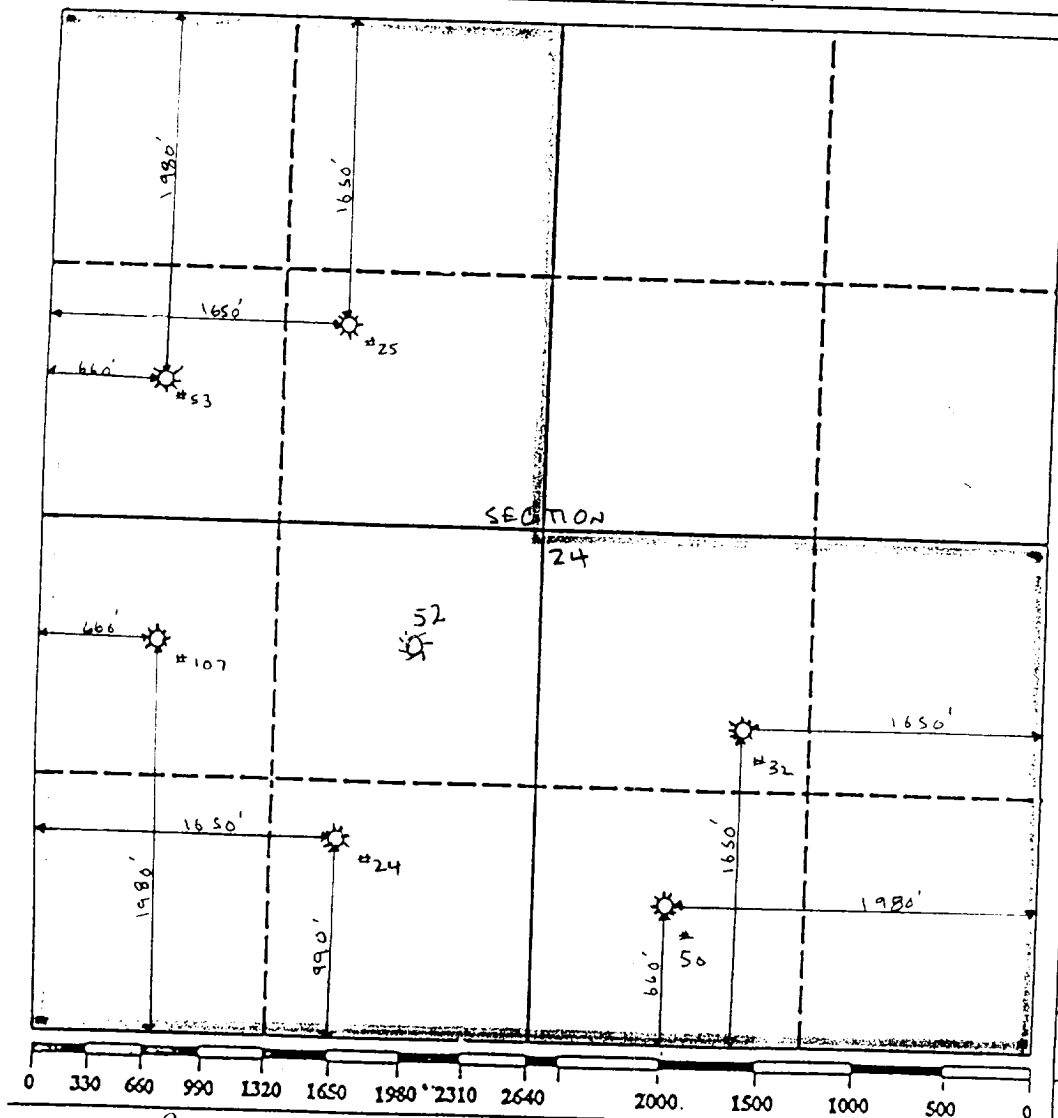
DISTRICT II  
P.O. Drawer DD, Artesia, NM 88210

DISTRICT III  
1000 Rio Brazos Rd., Aztec, NM 87410

WELL LOCATION AND ACREAGE DEDICATION PLAT

All Distances must be from the outer boundaries of the section

Operator Hal J. Rasmussen Operating, Inc.			Lease STATE "A" ACCOUNT 1		Well No. 53
Unit Letter E	Section 24	Township 23 S	Range 36 E	County Lea	
Actual Footage Location of Well: 1980 feet from the NORTH line and 660 feet from the WEST line					
Ground level Elev. YATES		Pool Jalmat-TNSL-YTS-7R		Dedicated Acreage: 480 Acres	
<p>1. Outline the acreage dedicated to the subject well by colored pencil or hatchure marks on the plat below.</p> <p>2. If more than one lease is dedicated to the well, outline each and identify the ownership thereof (both as to working interest and royalty).</p> <p>3. If more than one lease of different ownership is dedicated to the well, have the interest of all owners been consolidated by communitization, unitization, force-pooling, etc.? <input type="checkbox"/> Yes <input type="checkbox"/> No If answer is "yes" type of consolidation _____</p> <p>If answer is "no" list the owners and tract descriptions which have actually been consolidated. (Use reverse side of this form if necessary.) _____</p> <p>No allowable will be assigned to the well until all interests have been consolidated (by communitization, unitization, forced-pooling, or otherwise) or until a non-standard unit, eliminating such interest, has been approved by the Division.</p>					



<b>OPERATOR CERTIFICATION</b> I hereby certify that the information contained herein is true and complete to the best of my knowledge and belief.	
Signature	
Printed Name	Jay D. Cherski
Position	Agent
Company	Hal J. Rasmussen Operating, Inc
Date	8/20/90
<b>SURVEYOR CERTIFICATION</b> I hereby certify that the well location shown on this plat was plotted from field notes of actual surveys made by me or under my supervision, and that the same is true and correct to the best of my knowledge and belief.	
Date Surveyed	
Signature & Seal of Professional Surveyor	
Certificate No.	

NEW MEXICO OIL CONSERVATION COMMISSION  
WELL LOCATION AND ACREAGE DEDICATION PLAT

Form C-102  
Supersedes C-128  
Effective 1-1-65

All distances must be from the outer boundaries of the Section.

Operator Texas Pacific Oil Company, Inc.			Lease State "A" A/c-1		Well No. 53
Unit Letter E	Section 24	Township 23-S	Range 36-E	County Lea	
Actual Footage Location of Well: 1980 feet from the north line and 660 feet from the west line					
Ground Level Elev. 3345	Producing Formation Jalmat		Pool Jalmat Yates		Dedicated Acreage 480 Acres

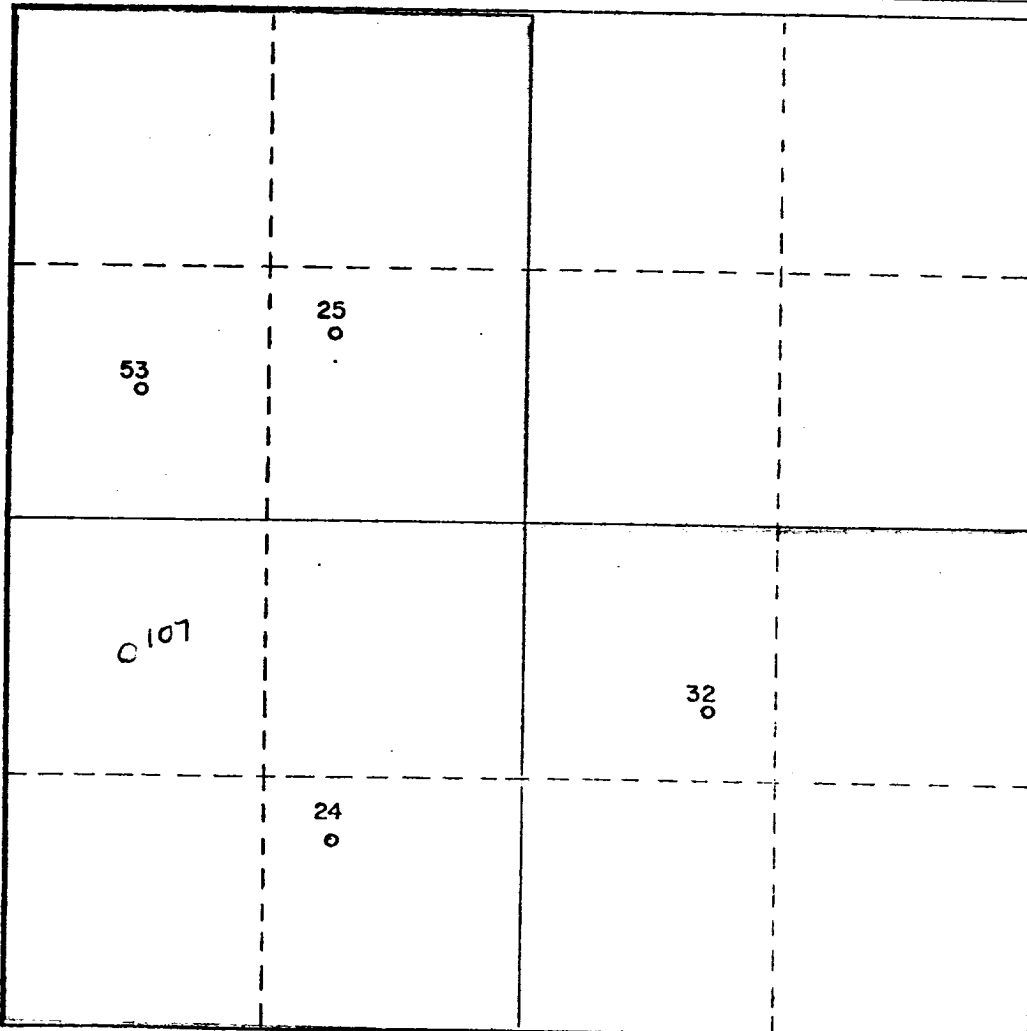
1. Outline the acreage dedicated to the subject well by colored pencil or hachure marks on the plat below.
2. If more than one lease is dedicated to the well, outline each and identify the ownership thereof (both as to working interest and royalty).
3. If more than one lease of different ownership is dedicated to the well, have the interests of all owners been consolidated by communitization, unitization, force-pooling, etc?

☐ Yes ☐ No If answer is "yes," type of consolidation \_\_\_\_\_

If answer is "no," list the owners and tract descriptions which have actually been consolidated. (Use reverse side of this form if necessary.) \_\_\_\_\_

No allowable will be assigned to the well until all interests have been consolidated (by communitization, unitization, forced-pooling, or otherwise) or until a non-standard unit, eliminating such interests, has been approved by the Commission.

NSP 1044



CERTIFICATION

I hereby certify that the information contained herein is true and complete to the best of my knowledge and belief.

*W. J. McClintock*  
Name  
W. J. McClintock

Position  
Dist. Operations Supt.

Company  
Texas Pacific Oil Co., Inc.

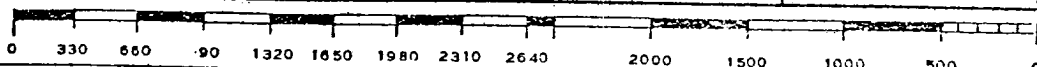
Date  
8-23-77

I hereby certify that the well location shown on this plat was plotted from field notes of actual surveys made by me or under my supervision, and that the same is true and correct to the best of my knowledge and belief.

Date Surveyed

Registered Professional Engineer  
and/or Land Surveyor

Certificate No.



RECEIVED

1977 JUN 7

OIL CONSERVATION COMM.  
HOBBBS, A. W.