

DISTRICT I  
P.O. Box 1980, Hobbs, NM 88240

DISTRICT II  
P.O. Drawer DD, Artesia, NM 88210

DISTRICT III  
1000 Rio Brazos Rd., Aztec, NM 87410

**OIL CONSERVATION DIVISION**  
P.O. Box 2088  
Santa Fe, New Mexico 87504-2088

WELL API NO.  
30 - 025 - 09480

5. Indicate Type of Lease  
STATE ☒ FEE ☐

6. State Oil & Gas Lease No.  
B-1431

7. Lease Name or Unit Agreement Name

MYERS LANGLIE MATTIX UNIT

8. Well No.

66

9. Pool name or Wildcat

LANGLIE MATTIX 7 RIVERS QUEEN

**SUNDRY NOTICES AND REPORTS ON WELLS**  
(DO NOT USE THIS FORM FOR PROPOSALS TO DRILL OR TO DEEPEN OR PLUG BACK TO A  
DIFFERENT RESERVOIR. USE "APPLICATION FOR PERMIT"  
(FORM C-101) FOR SUCH PROPOSALS.)

1. Type of Well:  
OIL WELL ☒ GAS WELL ☐ OTHER ☐

2. Name of Operator  
Texaco Exploration and Production Inc.

3. Address of Operator  
P. O. Box 730 Hobbs, NM 88240

4. Well Location  
Unit Letter D : 650 Feet From The NORTH Line and 660 Feet From The WEST Line

Section 36 Township 23-S Range 36-E NMPM LEA

10. Elevation (Show whether DF, RKB, RT, GR, etc.)

3336' DF

11. Check Appropriate Box to Indicate Nature of Notice, Report, or Other Data

**NOTICE OF INTENTION TO:**

PERFORM REMEDIAL WORK ☐ PLUG AND ABANDON ☒  
TEMPORARILY ABANDON ☐ CHANGE PLANS ☐  
PULL OR ALTER CASING ☐  
OTHER: ☐

**SUBSEQUENT REPORT OF:**

REMEDIAL WORK ☐ ALTERING CASING ☐  
COMMENCE DRILLING OPNS. ☐ PLUG AND ABANDONMENT ☐  
CASING TEST AND CEMENT JOB ☐  
OTHER: ☐

12. Describe Proposed or Completed Operations (Clearly state all pertinent details, and give pertinent dates, including estimated date of starting any proposed work) SEE RULE 1103.

- 1) Inform NMOCDD 24 hours prior to commencement of plugging.
- 2) MIRU. TIH with workstring. Tag cement at 3393'.
- 3) Load hole with salt gel mud; 10# brine and 25# gel / Bbl.
- 4) By wireline, shoot squeeze holes above TOC at 2055'.
- 5) Go in hole, pump 12 sx plug from 2815'-2715'. WOC. Tag plug.
- 6) Establish circulation through perfs and estimate annular volume. Squeeze annulus with 300 sx class 'C' cement and circulate to surface.
- 7) Pump 20 sx class "C" cement plug from 1320'-1169'. WOC. Tag plug.
- 8) Pump 35 sx class "C" cement plug from 339' to surface.
- 9) Fill 13-3/8"-8-5/8" annulus from surface with 100 sx using 1" tubing.
- 10) Cutoff wellhead and install marker. Clean location.

I hereby certify that the information above is true and complete to the best of my knowledge and belief.

SIGNATURE Robert McNaughton TITLE Production Engineer DATE 5-22-92

TYPE OR PRINT NAME Robert McNaughton TELEPHONE NO. 397-0428

(This space for State Use)

APPROVED BY Robert McNaughton TITLE Production Engineer DATE 5-22-92

CONDITIONS OF APPROVAL, IF ANY:

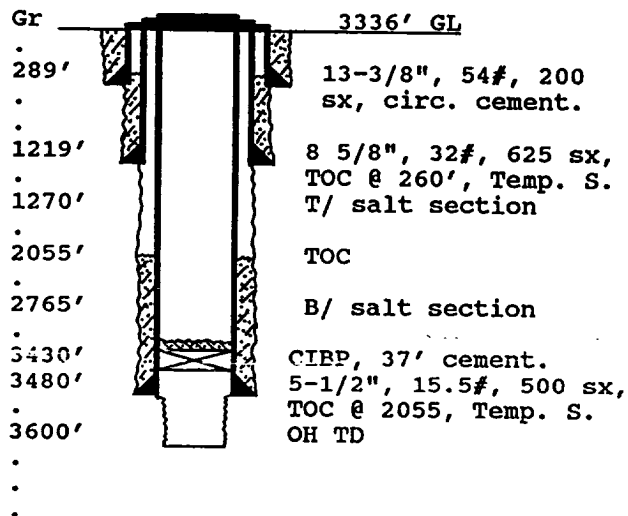
# WELL DATA SHEET

OPERATOR: Texaco Exploration & Prod. Inc Lease: Myers Langlie Mattix Unit #66

FOOTAGE LOCATION: 660 FNLx 660 FWL Sec./Twn/Rng: Unit D, Sec 36, T-23-S, R-36-E

Former Amerada Petroleum State LM "T" #8 Lea County, New Mexico

## SCHEMATIC



Tops: (from #65-Y)

Salt 1270'-2765'  
Yates 2930'  
Queen 3540'

## TABULAR DATA

Surface Casing: Set at 289'  
Size 13-3/8", 54# Cemented with 200' sx.  
TOC surface ' determined by calculated  
Hole Size 17 1/4" Comp. Date 10-05-49  
Intermediate casing: Set at 1219'  
Size 8 5/8", 32# Cemented with 625 sx.  
TOC 260 ' determined by Temp. S.  
Hole Size 11"  
Production Casing: Set at 3480'  
Size 5-1/2", 15.5# Cemented with 500 sx.  
TOC 2055 ' determined by Temp. S.  
Hole Size 7 3/8"  
Open Hole Interval:  
3480' to 3600' Size 6 1/4" ?  
Nitro Shot 657 Ots, 4 stages

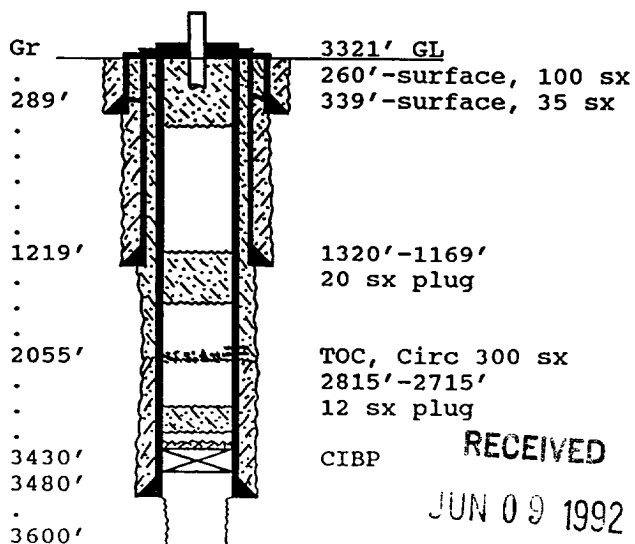
## RECOMMENDED PLUG AND ABANDON PROCEDURE

OPERATOR: Texaco Exploration & Prod. Inc LEASE: Myers Langlie Mattix Unit #66

FOOTAGE LOCATION: 660 FNLx 660 FWL Sec./Twn/Rng: Unit D, Sec 36, T-23-S, R-36-E

8-21-86: CIBP set at 3430', 37' cement. Casing tested OK. Lea County, New Mexico

## SCHEMATIC



## PLUGGING DATA

Surface Plug:  
Size 339'-surf. Cemented with 35 sx.  
260'-surf. (Annulus) 100 sx.  
Class 'C' Cement, 1.32 cu ft/ sx  
Intermediate Plug(s):  
Size 1320'-1169' Cemented with 20 sx.  
2815'-2715' 12 sx.  
Circulate cement through annulus, 300 sx.  
Producing Zone Plugs:  
Size CIBP, 37' Cemented with sx.

RECEIVED

JUN 09 1992

300 HOURS OFF