

DISTRICT I

P.O. Box 1980, Hobbs NM 88241-1980

DISTRICT II

P.O. Box Drawer DD, Artesia, NM 88211-0719

DISTRICT III

1000 Rio Brazos Rd., Aztec, NM 87410

DISTRICT IV

P.O. Box 2088, Santa Fe, NM 87504-2088

State of New Mexico
Energy, Minerals and Natural Resources Department

OIL CONSERVATION DIVISION

P.O. Box 2088

Santa Fe, New Mexico 87504-2088

Form C-102

Revised February 10, 1994

Instructions on back

Submit to Appropriate District Office

State Lease - 4 Copies

Fee Lease - 3 Copies

☐ AMENDED REPORT

WELL LOCATION AND ACREAGE DEDICATION PLAT

¹ API Number 30 025 09558 09556	² Pool Code 33820	³ Pool Name JALMAT TANSILL YATES SEVEN RIVERS
⁴ Property Code 10917	⁵ Property Name COOPER JAL UNIT	⁶ Well No. 107 303
⁷ OGRID Number 022351	⁸ Operator Name TEXACO EXPLORATION & PRODUCTION INC.	⁹ Elevation 3327' KB

¹⁰ Surface Location

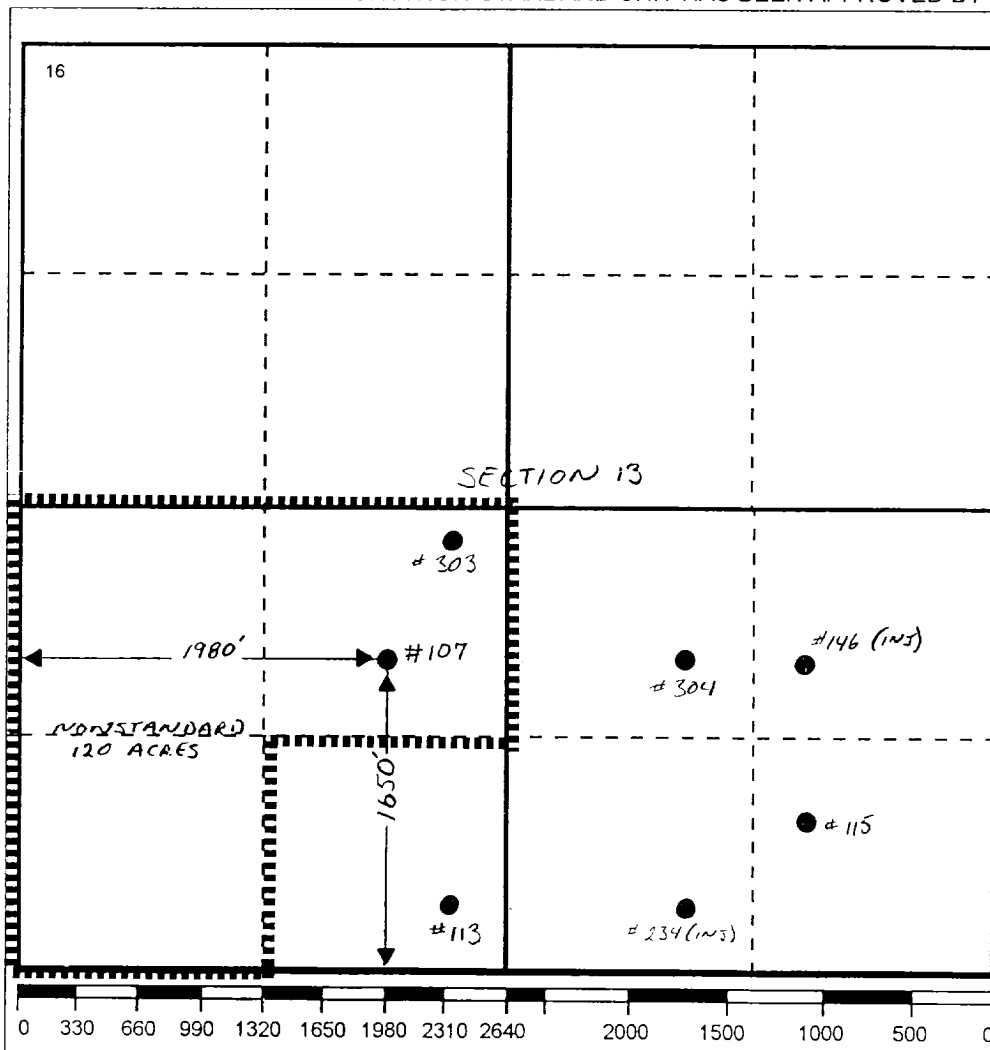
UI or lot no.	Section	Township	Range	Lot./dn	Feet From The	North/South Line	Feet From The	East/West Line	County
K	13	24S	36E		1650 2310	SOUTH	1980 2310	WEST	LEA

¹¹ Bottom Hole Location If Different From Surface

UI or lot no.	Section	Township	Range	Lot./dn	Feet From The	North/South Line	Feet From The	East/West Line	County

¹² Dedicated Acres 120	¹³ Joint or Infill No	¹⁴ Consolidation Code	¹⁵ Order No.
--------------------------------------	-------------------------------------	----------------------------------	-------------------------

NO ALLOWABLE WILL BE ASSIGNED TO THIS COMPLETION UNTIL ALL INTERESTS HAVE BEEN CONSOLIDATED
OR A NON-STANDARD UNIT HAS BEEN APPROVED BY THE DIVISION



17 OPERATOR CERTIFICATION

I hereby certify that the information
contained herein is true and complete to the
best of my knowledge and belief

Signature

Printed Name

Darrell J. Carriger

Position

Engineering Assistant

Date

3/6/95

18 SURVEYOR CERTIFICATION

I hereby certify that the well location shown
on this plat was plotted from field notes of
actual surveys made by me or under my
supervision, and that the same is true and
correct to the best of my knowledge and
belief.

Date Surveyed

Signature & Seal of
Professional Surveyor

Certificate No.

NEW MEXICO
OIL CONSERVATION COMMISSION

Gas Well Plat

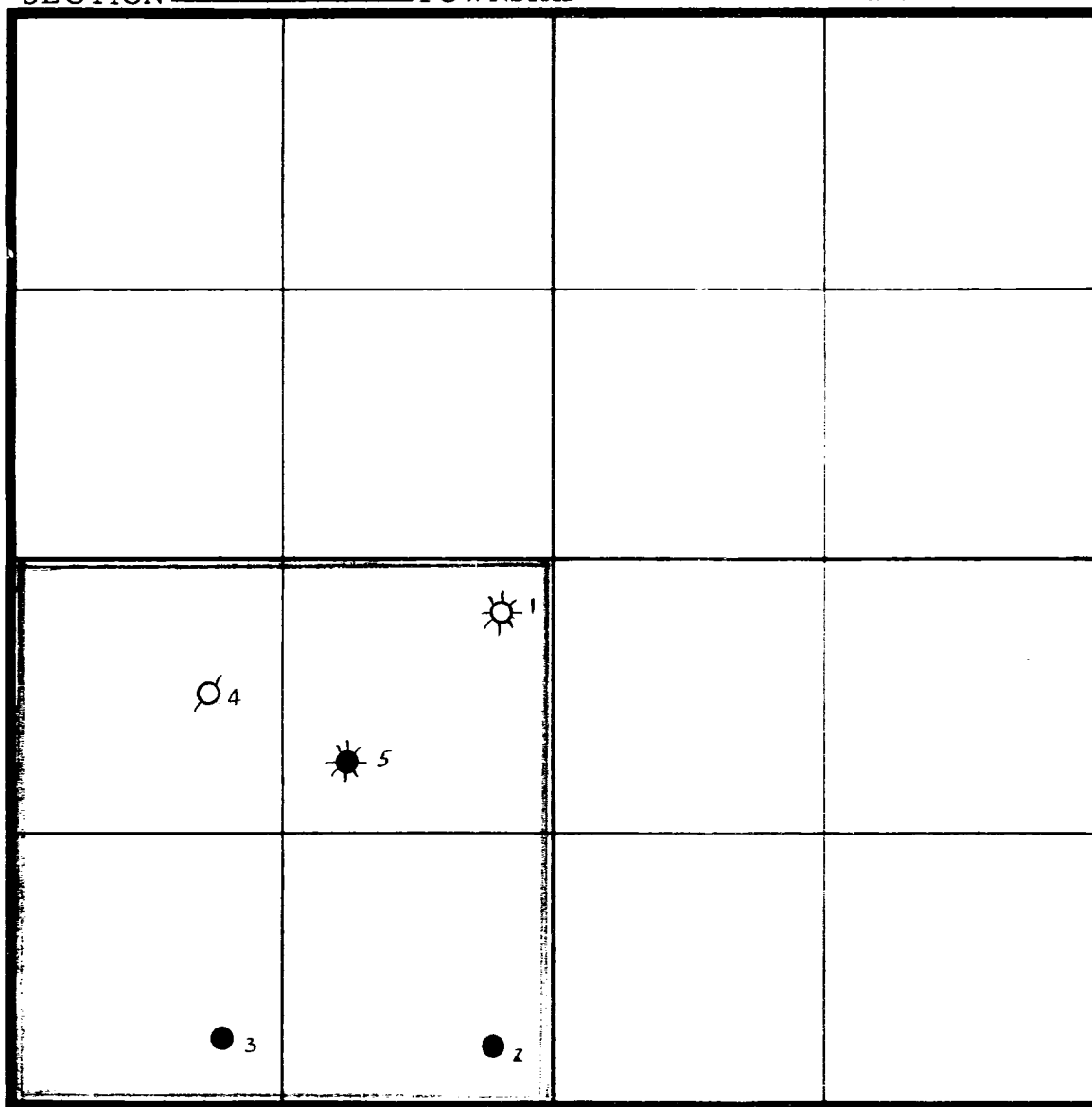
Date Dec. 28, 1953

SOUTHERN CALIFORNIA PETROLEUM CORP. Hunter 1
Operator Lease Well No.

Name of Producing Formation Yates Pool Langmat

No. Acres Dedicated to the Well 160

SECTION 13 TOWNSHIP 24S RANGE 36E



I hereby certify that the information given above is true and complete to the best of my knowledge.

Name F. P. Mannon
Position Petroleum Engineer
Representing S. CAL. PET. CORP.
Address Box 1071, Midland, Texas

(over)

INSTRUCTIONS

1. Is this gas well a dual completion? Yes No X
2. If the answer to Question 1 is Yes, are there any other dually completed wells within the dedicated acreage? Yes No

A separate plat must be filed for each gas well, outlining the area dedicated to such well and showing the location of all other wells (oil and gas) within the outlined area.

Mail in duplicate to the district office for the district in which the well is located.

