

STRICT I

P.O. Box 1980, Hobbs, NM 71-1980

DISTRICT II

P.O. Box Drawer DD, Artesia, NM 88211-0719

DISTRICT III

1000 Rio Brazos Rd., Aztec, NM 87410

DISTRICT IV

P.O. Box 2088, Santa Fe, NM 87504-2088

State of New Mexico
Energy, Minerals and Natural Resources Department

OIL CONSERVATION DIVISION

P.O. Box 2088
Santa Fe, New Mexico 87504-2088

Form C-102

Revised February 10, 1994

Instructions on back

Submit to Appropriate District Office

State Lease - 4 Copies

Fee Lease - 3 Copies

☐ AMENDED REPORT

WELL LOCATION AND ACREAGE DEDICATION PLAT

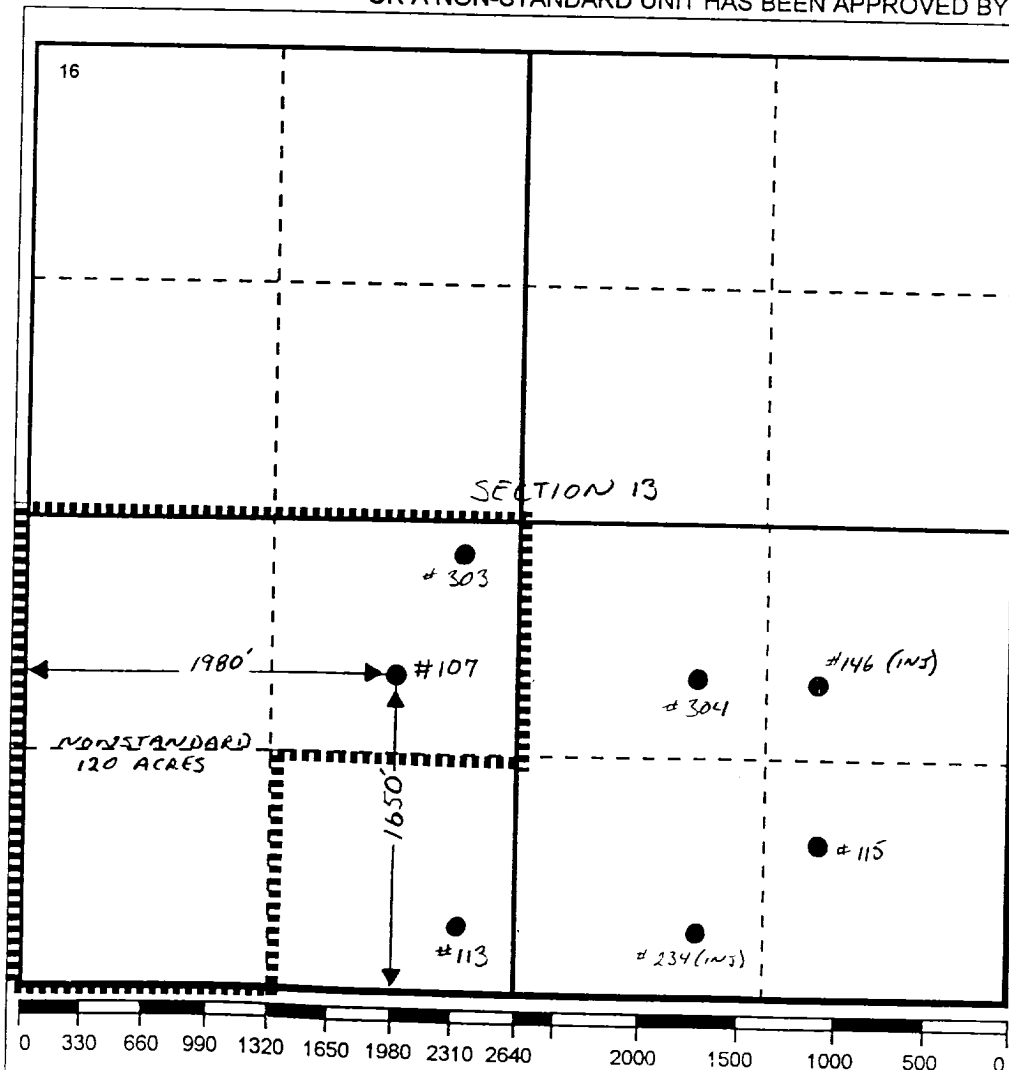
¹ API Number 30 025 09558		² Pool Code 33820		³ Pool Name JALMAT TANSILL YATES SEVEN RIVERS	
⁴ Property Code 10917		⁵ Property Name COOPER JAL UNIT			⁶ Well No. 107
⁷ OGRID Number 022351		⁸ Operator Name TEXACO EXPLORATION & PRODUCTION INC.			⁹ Elevation 3327' KB

¹⁰ Surface Location

UI or lot no. K	Section 13	Township 24S	Range 36E	Lot.Idn	Feet From The 1650	North/South Line SOUTH	Feet From The 1980	East/West Line WEST	County LEA
--------------------	---------------	-----------------	--------------	---------	-----------------------	---------------------------	-----------------------	------------------------	---------------

¹¹ Bottom Hole Location If Different From Surface

UI or lot no.	Section	Township	Range	Lot.Idn	Feet From The	North/South Line	Feet From The	East/West Line	County
¹² Dedicated Acres 120	¹³ Joint or Infill No	¹⁴ Consolidation Code	¹⁵ Order No.						

NO ALLOWABLE WILL BE ASSIGNED TO THIS COMPLETION UNTIL ALL INTERESTS HAVE BEEN CONSOLIDATED
OR A NON-STANDARD UNIT HAS BEEN APPROVED BY THE DIVISION

17 OPERATOR CERTIFICATION

I hereby certify that the information
contained herein is true and complete to the
best of my knowledge and belief

Signature

Printed Name

Darrell J. Carriger

Position

Engineering Assistant

Date

3/6/95

18 SURVEYOR CERTIFICATION

I hereby certify that the well location shown
on this plat was plotted from field notes of
actual surveys made by me or under my
supervision, and that the same is true and
correct to the best of my knowledge and
belief.

Date Surveyed

Signature & Seal of
Professional Surveyor

Certificate No.