

**NEW MEXICO OIL CONSERVATION COMMISSION
WELL LOCATION AND ACREAGE DEDICATION PLAT**

Form C-102
Supersedes C-128
Effective 1-1-65

All distances must be from the outer boundaries of the Section.

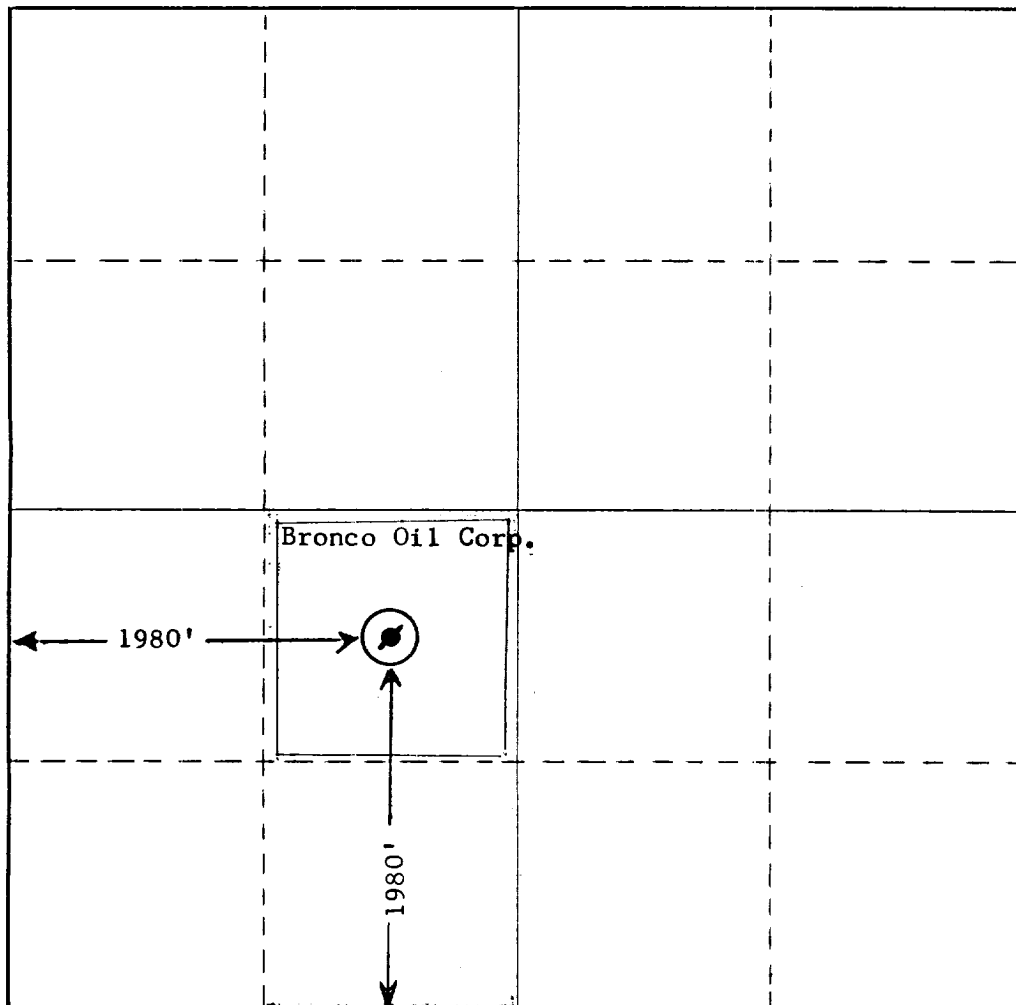
Operator Bronco Oil Corporation			Lease E. C. Hill "B"		Well No. 1
Unit Letter K	Section 27	Township 23S	Range 37E	County Lea	
Actual Footage Location of Well: <div style="display: flex; justify-content: space-between;"> 1980' feet from the South line and 1980' feet from the West line of Section </div>					
Ground Level Elev. 3242.6L	Producing Formation McKee		Pool Teague (McKee)/		Dedicated Acreage: 40 Acres Acres

1. Outline the acreage dedicated to the subject well by colored pencil or hachure marks on the plat below.
2. If more than one lease is dedicated to the well, outline each and identify the ownership thereof (both as to working interest and royalty).
3. If more than one lease of different ownership is dedicated to the well, have the interests of all owners been consolidated by communitization, unitization, force-pooling, etc?

☐ Yes ☐ No If answer is "yes," type of consolidation _____

If answer is "no," list the owners and tract descriptions which have actually been consolidated. (Use reverse side of this form if necessary.) _____

No allowable will be assigned to the well until all interests have been consolidated (by communitization, unitization, forced-pooling, or otherwise) or until a non-standard unit, eliminating such interests, has been approved by the Commission.



CERTIFICATION

I hereby certify that the information contained herein is true and complete to the best of my knowledge and belief.

Name *Max E. Curry*
Position
Exec. Vice-President
Company
Bronco Oil Corporation
Date
10-12-67

I hereby certify that the well location shown on this plat was plotted from field notes of actual surveys made by me or under my supervision, and that the same is true and correct to the best of my knowledge and belief.

THIS IS A RE-ENTRY OF A WELL DRILLED BY GULF OIL CORP. KNOWN AS THEIR E. C. HILL, WELL No. 1., AND WAS SURVEYED BY GULF. THEIR PLAT IS ON FILE IN THE HOBBS NMOCC OFFICE.

Certificate No. _____

