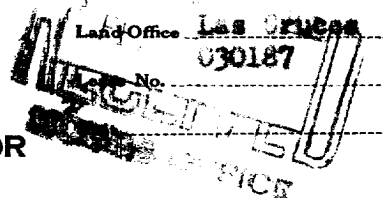


(SUBMIT IN TRIPLICATE)

UNITED STATES
DEPARTMENT OF THE INTERIOR
GEOLOGICAL SURVEY

SUNDRY NOTICES AND REPORTS ON WELLS

NOTICE OF INTENTION TO DRILL.....	SUBSEQUENT REPORT OF WATER SHUT-OFF.....	<input checked="" type="checkbox"/>
NOTICE OF INTENTION TO CHANGE PLANS.....	SUBSEQUENT REPORT OF SHOOTING OR ACIDIZING.....	
NOTICE OF INTENTION TO TEST WATER SHUT-OFF.....	SUBSEQUENT REPORT OF ALTERING CASING.....	
NOTICE OF INTENTION TO RE-DRILL OR REPAIR WELL.....	SUBSEQUENT REPORT OF REDRILLING OR REPAIR.....	
NOTICE OF INTENTION TO SHOOT OR ACIDIZE.....	SUBSEQUENT REPORT OF ABANDONMENT.....	
NOTICE OF INTENTION TO PULL OR ALTER CASING.....	SUPPLEMENTARY WELL HISTORY.....	
NOTICE OF INTENTION TO ABANDON WELL.....		

(INDICATE ABOVE BY CHECK MARK NATURE OF REPORT, NOTICE, OR OTHER DATA)

January 30

1950

Well No. 12 is located 1980 ft. from N line and 600 ft. from W line of sec. 27
1 of 27 23 S 37 E NAPM
(1/4 Sec. and Sec. No.) (Twp.) (Range) (Meridian)
Teague Lea New Mexico
(Field) (County or Subdivision) (State or Territory)

The elevation of the derrick floor above sea level is ft.

DETAILS OF WORK

(State names of and expected depths to objective sands; show sizes, weights, and lengths of proposed casings; indicate mudding jobs, cementing points, and all other important proposed work)

On January 26, 1950, ran 219 joints of 7" 50 new 33 casing from bottom up as follows: 45 joints of 26# 8-80 casing with long thread and collars; 47 joints of 23# N.Y. 8-80 A.J. Smith casing with short thread and collars; 97 joints of 23# J-35 J&L casing with long thread and collars; 29 joints of N.Y. 23# Smith casing with short thread and collars; and 1 joint of 26# 8-80 casing with long thread and collar. Total tallies 9294', 8-14', set at 9308'. Placed one Baker centralizer, 7", spaced at 8850'. Cemented by Halliburton with 675 sacks of 23 howeogel and 125 sacks of common portland bulk cement. Plug at 9281'. Job started at 9:15 a.m. and completed at 8:45 p.m. after waiting 72 hours, the 7" casing was tested with 1000 pressure applied for 30 minutes. The plug was drilled and the casing and cement were tested with 1000 pressure for 30 minutes. There was no pressure drop on either test, any preparations were being made to complete the well.
Top of cement back of 7" casing at 5050' per temperature survey.

I understand that this plan of work must receive approval in writing by the Geological Survey before operations may be commenced.

Company Gulf Oil CorporationAddress Box 1667Hobbs, New MexicoORIGINAL SIGNED BY
E. J. GALLAGHER

By

Title District Superintendent