

UNITED STATES  
DEPARTMENT OF THE INTERIOR  
BUREAU OF LAND MANAGEMENT

FORM APPROVED  
Budget Bureau No. 1004-0135  
Expires: September 30, 1990

SUNDRY NOTICES AND REPORTS ON WELLS

Do not use this form for proposals to drill or to deepen or reentry to a different reservoir.  
Use "APPLICATION FOR PERMIT—" for such proposals

SUBMIT IN TRIPLICATE

1. Type of Well

☐ Oil Well ☐ Gas Well ☐ Other Water Injection Well

2. Name of Operator

Texaco Exploration & Production Inc.

3. Address and Telephone No.

P.O. Box 730, Hobbs, NM 88241-0730 (505) 393-7191

4. Location of Well (Footage, Sec., T., R., M., or Survey Description)

Unit C, 1980 FWL, 330 FNL

Sec 30, T-23-S, R-37-E

5. Lease Designation and Serial No.

LC- 060825 A

6. If Indian, Allottee or Tribe Name

7. If Unit or CA, Agreement Designation

8. Well Name and No. Myers Langlie

Mattix Unit #7

9. API Well No.

30 - 025 - 10893

10. Field and Pool, or Exploratory Area

Langlie Mattix 7R Q GB

11. County or Parish, State

Lea County, NM

12. CHECK APPROPRIATE BOX(s) TO INDICATE NATURE OF NOTICE, REPORT, OR OTHER DATA

TYPE OF SUBMISSION

- ☒ Notice of Intent  
☐ Subsequent Report  
☐ Final Abandonment Notice

TYPE OF ACTION

- ☒ Abandonment  
☐ Recompletion  
☐ Plugging Back  
☐ Casing Repair  
☐ Altering Casing  
☐ Other  
☐ Change of Plans  
☐ New Construction  
☐ Non-Routine Fracturing  
☐ Water Shut-Off  
☐ Conversion to Injection

(Note: Report results of multiple completion on Well Completion or  
Recompletion Report and Log form.)

13. Describe Proposed or Completed Operations (Clearly state all pertinent details, and give pertinent dates, including estimated date of starting any proposed work. If well is directionally drilled, give subsurface locations and measured and true vertical depths for all markers and zones pertinent to this work.)\*

- 1) Inform BLM and OCD 24 hours prior to commencement of plugging.
- 2) TIH with open-ended work string. Tag CIBP at 3480' (50' cement on top).
- 3) Load hole with salt gel mud; 10# brine and 25# gel/ Bbl. POH.
- 4) By wireline, perf two squeeze holes at 1300'.
- 5) Go in hole and pump 100' plug, 12 sx, from approximately 2705'-2805' across the base of the salt section. WOC. Tag plug.
- 6) Set retainer at 1250'. Establish circulation through squeeze holes. Squeeze 21 sx through retainer. Sting out and spot 4 sx on top.
- 7) Move up hole. Circulate 105 sx cement from 407' to the surface through the annulus and fill the casing. Lay down work string and ND BOP.
- 8) Cut off wellhead and install dry hole marker. Clean location.

14. I hereby certify that the foregoing is true and correct

Signed [Signature]

Title Production Engineer

Date 6-9-92

(This space for Federal or State office use)

Approved by \_\_\_\_\_  
Conditions of approval, if any:

Title \_\_\_\_\_

Date 6-17-92

Title 18 U.S.C. Section 1001, makes it a crime for any person knowingly and willfully to make to any department or agency of the United States any false, fictitious or fraudulent statements or representations as to any matter within its jurisdiction.

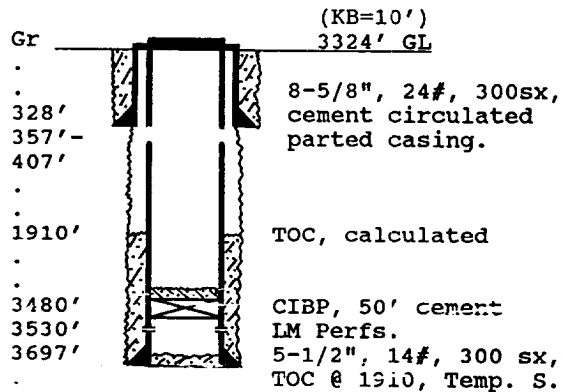
\*See Instruction on Reverse Side

## WELL DATA SHEET

PO-113  
(3/92)

OPERATOR: Texaco Exploration & Prod. Inc Lease: Myers Langlie Mattix Unit #7 WIW  
 FOOTAGE LOCATION: 1980 FWL X 330 FNL Sec./Twn/Rng: Unit C, Sec 30, T-23-S, R-37-E  
 Former Texas Pacific O&G Inc. Blinbry Fed. 'A' #10 Lea County, New Mexico

## SCHEMATIC



Tops:  
 Salt 1250'-2755'  
 Yates 2840'  
 7 Rivers 3115'  
 Queen 3505'

## TABULAR DATA

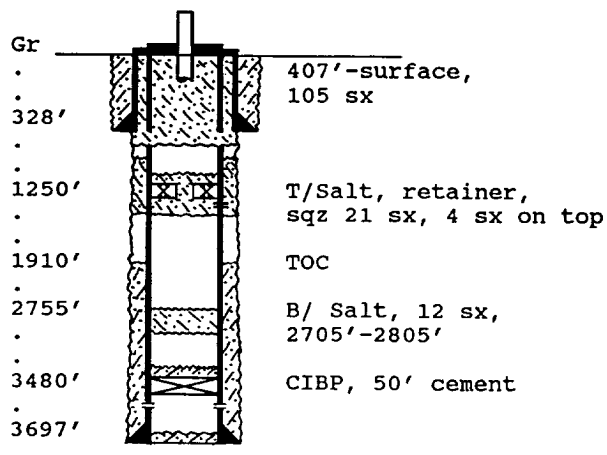
Surface Casing: Set at 328'  
 Size 8-5/8", 24# Cemented with 300 sx.  
 TOC surface ' determined by circulation  
 Hole Size ?? Comp. Date 5-06-61.  
 Intermediate casing: Set at  
 Size NONE Cemented with sx.  
 TOC ' determined by  
 Hole Size  
 Production Casing: Set at 3626'  
 Size 5-1/2", 14# Cemented with 300 sx.  
 TOC 1910' ' determined by Temp. Surv.  
 Hole Size 7 7/8", 4 cores from 3489'-3630'  
 Present Completion: (Injection Interval)  
 3530' to 3644' 2-4 spf, 88 holes

## PLUG AND ABANDON DATA

PO-113  
(3/92)

OPERATOR: Texaco E&P Inc. LEASE: Myers Langlie Mattix Unit #7 WIW  
 FOOTAGE LOCATION: 1980 FWL X 330 FNL Sec./Twn/Rng: Unit C, Sec 30, T-23-S, R-37-E  
 Casing parted from 357'-421'; 5-17-92. Lea County, New Mexico

## SCHEMATIC



## PLUGGING DATA

Surface Plug:  
 Size 407'-surf. Cemented with 105 sx.  
 Circ. 60 sx through annulus, fill casing.  
 Class 'C' Cement, 1.32 cu ft/ sx.  
 Intermediate Plug(s):  
 Size retainer Cemented with 21 sx.  
 (on top) 4 sx  
 2705'-2805' 12 sx  
 Class 'C' cement, 1.32 cu ft/ sx.  
 Producing Zone Plugs:  
 Size CIBP Cemented with 50'