

UNITED STATES  
DEPARTMENT OF THE INTERIOR  
BUREAU OF LAND MANAGEMENT

FORM APPROVED  
Budget Bureau No. 1004-0135  
Expires: September 30, 1990

SUNDRY NOTICES AND REPORTS ON WELLS

Do not use this form for proposals to drill or to deepen or reentry to a different reservoir.  
Use "APPLICATION FOR PERMIT—" for such proposals

SUBMIT IN TRIPLICATE

1. Type of Well

☒ Oil Well ☐ Gas Well ☐ Other

2. Name of Operator

Texaco Exploration & Production Inc.

3. Address and Telephone No.

P.O. Box 730, Hobbs, NM 88241-0730 (505) 393-7191

4. Location of Well (Footage, Sec., T., R., M., or Survey Description)

Unit Letter C, 330 FNL, 2310 FWL  
Sec. 34, T-23-S, R-37-E

5. Lease Designation and Serial No.  
LC- 060825 - 6

6. If Indian, Allottee or Tribe Name

7. If Unit or CA, Agreement Designation

8. Well Name and No. Myers

Langlie Mattix Unit #49

9. API Well No.

30-025-10953

10. Field and Pool, or Exploratory Area

Langlie Mattix 7R Queen 68

11. County or Parish, State

Lea County, NM

12. CHECK APPROPRIATE BOX(S) TO INDICATE NATURE OF NOTICE, REPORT, OR OTHER DATA

TYPE OF SUBMISSION

- ☒ Notice of Intent  
☐ Subsequent Report  
☐ Final Abandonment Notice

TYPE OF ACTION

- ☒ Abandonment  
☐ Recompletion  
☐ Plugging Back  
☐ Casing Repair  
☐ Altering Casing  
☐ Other  
☐ Change of Plans  
☐ New Construction  
☐ Non-Routine Fracturing  
☐ Water Shut-Off  
☐ Conversion to Injection

(Note: Report results of multiple completion on Well Completion or  
Recompletion Report and Log form.)

13. Describe Proposed or Completed Operations (Clearly state all pertinent details, and give pertinent dates, including estimated date of starting any proposed work. If well is directionally drilled, give subsurface locations and measured and true vertical depths for all markers and zones pertinent to this work.)

- 1) Inform BLM 24 hours prior to commencement of plugging.
- 2) MIRU. Install bop. TIH with work string. Tag plug at 3548'.
- 3) Load hole with salt gel mud; 10# brine and 25# gel/ sb
- 4) By wireline, set CIBP at approximately 2845'.
- 5) GIH. Pump 13 sx, 40 cement on top of CIBP. WOC.
- 6) Pump 40 sx plug from 2450'-2350'. WOC. Tag plug.
- 7) Pump 40 sx plug from 1220'-1120'. WOC. Tag plug.
- 8) Pump 40 sx plug from 346'-246'. WOC. Tag plug.
- 9) Pump 50' surface plug of 20 sx. Lay down work string ND BOP.
- 10) Cutoff wellhead and install dry hole marker. Restore surface.

14. I hereby certify that the foregoing is true and correct

Signed [Signature]

Title Production Engineer

Date 3-31-92

(This space for Federal or State office use)

Approved by \_\_\_\_\_  
Conditions of approval, if any:

Title \_\_\_\_\_

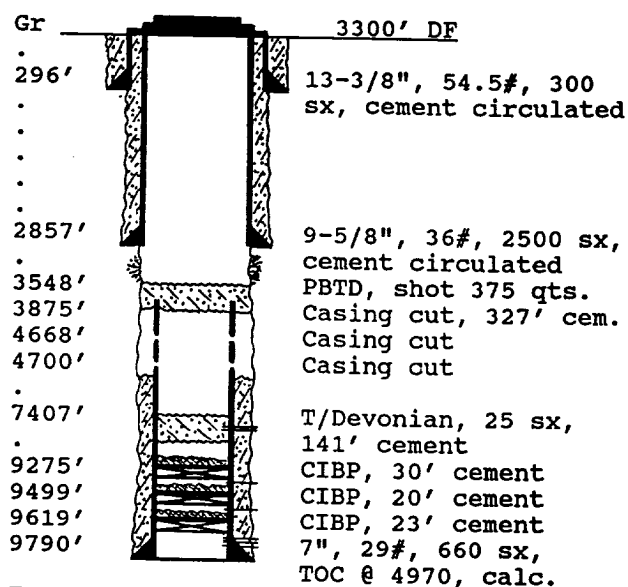
Date 4/3/92

## WELL DATA SHEET

PO-113  
(3/92)

OPERATOR: Texaco E&P Inc. Lease: Myers Langlie Mattix Unit #49  
 FOOTAGE LOCATION: 2310 FWL X 330 FNL Sec./Twn/Rng: Unit C, Sec 34, T-23-S, R-37-E  
Former R. Olson Oil Company Blinebry 'B' #3 Lea County, New Mexico

## SCHEMATIC



Tops:  
 Salt 1170'-2400' (Estimated)  
 Yates 2550'  
 Queen 3380'  
 Ellenberger 9655'

## TABULAR DATA

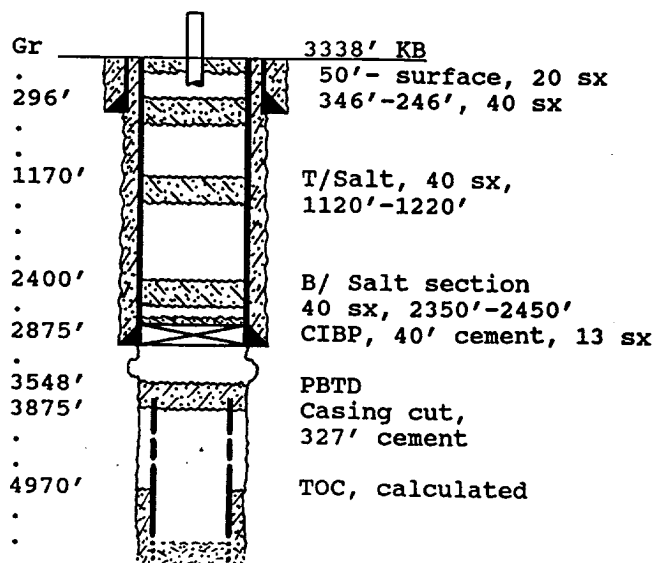
Surface Casing: Set at 285'  
 Size 13 3/8, 54.5# Cemented with 300 sx.  
 TOC surface ' determined by circulation  
 Hole Size ??? Comp. Date 2-16-54  
 Intermediate casing: Set at 2857'  
 Size 9 5/8, 36# Cemented with 2500 sx.  
 TOC surface ' determined by circulation  
 Hole Size 12-1/4"  
 Production Casing: Set at 9790'  
 Size 7", 29# Cemented with 660 sx.  
 TOC 4970 ' determined by calculated  
 Hole Size 8-3/4", Open hole shot w/ 375 qts  
 Present Completion:  
2871' to 3548' Open hole

## PLUG AND ABANDON DATA

PO-113  
(3/92)

OPERATOR: Texaco E&P Inc. LEASE: Myers Langlie Mattix Unit #49  
 FOOTAGE LOCATION: 2310 FWL X 330 FNL Sec./Twn/Rng: Unit C, Sec 34, T-23-S, R-37-E  
SI 10/62, converted to monitor well on 5-16-68. Lea County, New Mexico

## SCHEMATIC



## PLUGGING DATA

Surface Plug:  
 Size 50'-surf. Cemented with 20 sx.  
346'-246' 40 sx.  
 Includes 10% extra cement volume.  
 Class 'C' Cement, 1.32 cu ft/ sx  
 Intermediate Plug(s):  
 Size 1220'-1120' Cemented with 40 sx.  
2450'-2350' 40 sx.  
 Class 'C' cement, 1.32 cu ft/ sx  
 Producing Zone Plugs:  
 Size CIBP, 40' Cemented with 113 sx.  
 Set @ approximately 2845'