

UNITED STATES
DEPARTMENT OF THE INTERIOR
BUREAU OF LAND MANAGEMENT

FORM APPROVED
Budget Bureau No. 1004-0135
Expires: September 30, 1990

SUNDRY NOTICES AND REPORTS ON WELLS

Do not use this form for proposals to drill or to deepen or reentry to a different reservoir.
Use "APPLICATION FOR PERMIT—" for such proposals

5. Lease Designation and Serial No.
LC-060825B

6. If Indian, Allottee or Tribe Name

7. If Unit or CA, Agreement Designation

8. Well Name and No. Myers
Langlie Mattix Unit #84
9. API Well No.

30-025-10957
10. Field and Pool, or Exploratory Area
Langlie Mattix 7R Queen

11. County or Parish, State GB
Lea County, NM

SUBMIT IN TRIPLICATE

1. Type of Well
☒ Oil Well ☐ Gas Well ☐ Other

2. Name of Operator
Texaco Exploration & Production Inc.

3. Address and Telephone No.
P.O. Box 730, Hobbs, NM 88241-0730 (505) 393-7191

4. Location of Well (Footage, Sec., T., R., M., or Survey Description)
Unit F, 2310 FNL, 1650 FWL
Sec 34, T-23-S, R-37-E

12. CHECK APPROPRIATE BOX(S) TO INDICATE NATURE OF NOTICE, REPORT, OR OTHER DATA

TYPE OF SUBMISSION

- ☒ Notice of Intent
☐ Subsequent Report
☐ Final Abandonment Notice

TYPE OF ACTION

- ☒ Abandonment
☐ Recompletion
☐ Plugging Back
☐ Casing Repair
☐ Altering Casing
☐ Other
☐ Change of Plans
☐ New Construction
☐ Non-Routine Fracturing
☐ Water Shut-Off
☐ Conversion to Injection

(Note: Report results of multiple completion on Well Completion or
Recompletion Report and Log form.)

13. Describe Proposed or Completed Operations (Clearly state all pertinent details, and give pertinent dates, including estimated date of starting any proposed work. If well is directionally drilled, give subsurface locations and measured and true vertical depths for all markers and zones pertinent to this work.)

- 1) Inform BLM 24 hours prior to commencement of plugging.
- 2) Rig up unit, install bop. TIH with tubing and tag CIBP.
- 3) Load hole with salt gel mud; 10# brine and 25# gel/ Bbl.
- 4) Pump 15 sx plug from 2160'-2260'. WOC and tag plug.
- 5) By wireline, perf 2 squeeze holes at 1300'.
- 6) GIH with tubing. Establish circulation through perfs and pump 30" sx class "C" cement from 1200' to 1300'. WOC and tag plug.
- 7) Perf 2 squeeze holes at 373. Establish circulation and pump 100 sx cement. Fill casing and annulus to surface.
- 8) Cutoff wellhead and install marker. Clean location.

14. I hereby certify that the foregoing is true and correct

Signed [Signature] Title Production Engineer Date 3-31-92

(This space for Federal or State office use)

Approved by _____ Title _____ Date 4/3/92
Conditions of approval, if any:

Title 18 U.S.C. Section 1001, makes it a crime for any person knowingly and willfully to make to any department or agency of the United States any false, fictitious or fraudulent statements or representations as to any matter within its jurisdiction.

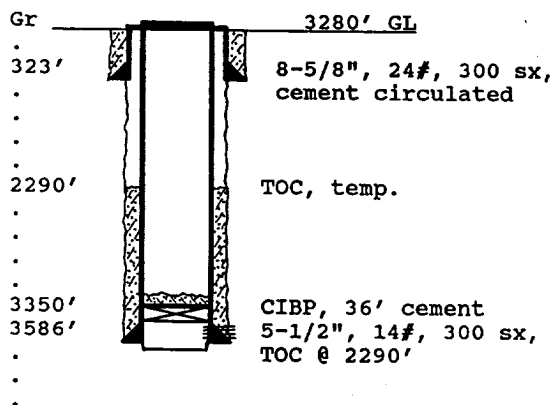
*See Instruction on Reverse Side

WELL DATA SHEET

PO-113
(3/92)

OPERATOR: Texaco E&P Inc. Lease: Myers Langlie Mattix Unit #84
 FOOTAGE LOCATION: 2310 FNL X 1650 FWL Sec./Twn/Rng: Unit F, Sec 34, T-23-S, R-37-E
Former Texas Pacific Pipeline 'B' #7 Lea County, New Mexico

SCHEMATIC



Tops:
 Salt 1250'-2415'
 Yates 2520'
 7 Rivers 2802'
 Queen 3302'

TABULAR DATA

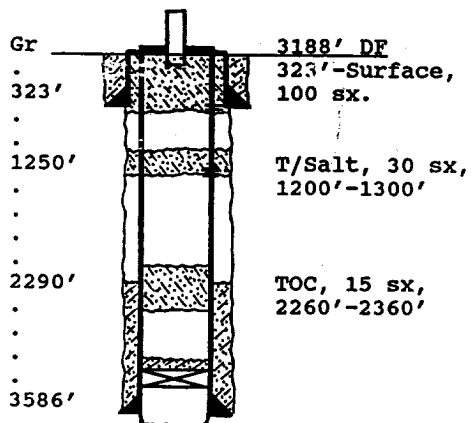
Surface Casing: Set at 323'
 Size 8 5/8, 24# Cemented with 300 sx.
 TOC surface ' determined by circulation
 Hole Size ??? Comp. Date 9-29-61
 Intermediate casing: Set at _____
 Size NONE Cemented with _____ sx.
 TOC _____ ' determined by _____
 Hole Size _____
 Production Casing: Set at 3586'
 Size 5 1/2", 14# Cemented with 300 sx.
 TOC 2290 ' determined by Temp log
 Hole Size 7 7/8"
 Present Completion:
3420 ' to 3566 ' perfs, 1-4 SPF

PLUG AND ABANDON DATA

PO-113
(3/92)

OPERATOR: Texaco E&P Inc. LEASE: Myers Langlie Mattix Unit #84
 FOOTAGE LOCATION: 2310 FNL X 1650 FWL Sec./Twn/Rng: Unit F, Sec 34, T-23-S, R-37-E
Classified TRO on 1-06-89, CIBP set at 3350' Lea County, New Mexico

SCHEMATIC



PLUGGING DATA

Surface Plug:
 Size 373'-surf. Cemented with 100 sx.
 Includes 10% extra cement volume.
 Class 'C' Cement, 1.32 cu ft/ sx
 Intermediate Plug(s):
 Size 1200'-1300' Cemented with 30 sx.
2260'-2360' 15 sx
 Class 'C' cement, 1.32 cu ft/ sx
 Producing Zone Plugs:
 Size CIBP, 36' Cemented with _____ sx.

APR 07 1992

CSC