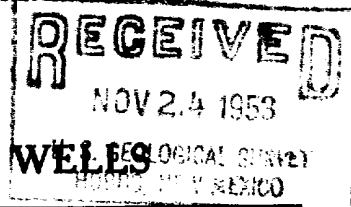


(SUBMIT IN TRIPLICATE)

UNITED STATES
DEPARTMENT OF THE INTERIOR
GEOLOGICAL SURVEY

Land Office Las CrucesLease No. 064118

Unit



SUNDRY NOTICES AND REPORTS ON WELLS

NOTICE OF INTENTION TO DRILL	<input checked="" type="checkbox"/>	SUBSEQUENT REPORT OF WATER SHUT-OFF	
NOTICE OF INTENTION TO CHANGE PLANS		SUBSEQUENT REPORT OF SHOOTING OR ACIDIZING	
NOTICE OF INTENTION TO TEST WATER SHUT-OFF		SUBSEQUENT REPORT OF ALTERING CASING	
NOTICE OF INTENTION TO RE-DRILL OR REPAIR WELL		SUBSEQUENT REPORT OF RE-DRILLING OR REPAIR	
NOTICE OF INTENTION TO SHOOT OR ACIDIZE		SUBSEQUENT REPORT OF ABANDONMENT	
NOTICE OF INTENTION TO PULL OR ALTER CASING		SUPPLEMENTARY WELL HISTORY	
NOTICE OF INTENTION TO ABANDON WELL			

(INDICATE ABOVE BY CHECK MARK NATURE OF REPORT, NOTICE, OR OTHER DATA)

HILL NO. 7November 21, 1953Well No. 7 is located 990 ft. from N line and 330 ft. from E/W line of sec. 35N 1/4 NW 1/4 Sec. 35
(1/4 Sec. and Sec. No.)23-S
(Twp.)37-E
(Range)NMPH
(Meridian)Teague Ellenburger
(Field)Lee
(County or Subdivision)New Mexico
(State or Territory)

The elevation of the derrick floor above sea level is _____ ft.

DETAILS OF WORK

(State names of and expected depths to objective sands; show sizes, weights, and lengths of proposed casings; indicate mudding jobs, cementing points, and all other important proposed work)

It is our intention to drill a well with rotary tools at the above location to a depth of approximately 9,800 feet unless commercial oil or gas production is encountered at a lesser depth. All casing will be cemented in accordance with methods approved by the U. S. Geological Survey. Any other special requirements will be complied with. The following casing pattern will be used:

13-3/8" Casing to be set at approximately 300 feet, cemented with 175 sacks.

9-5/8" Casing to be set at approximately 2,900 feet, cemented with 1400 sacks.

7" Casing to be set at approximately 9,600 feet, cemented with 500 sacks.

NOTE - (October 9, 1953, U. S. G. S. approval was granted to drill a well in the Teague Ellenburger Field, located 990 ft. from the North line and 660 ft. from the West line of section 35, Twp 23-S, range 37-E, NMPH, which well is now being completed in the Devonian horizon.)

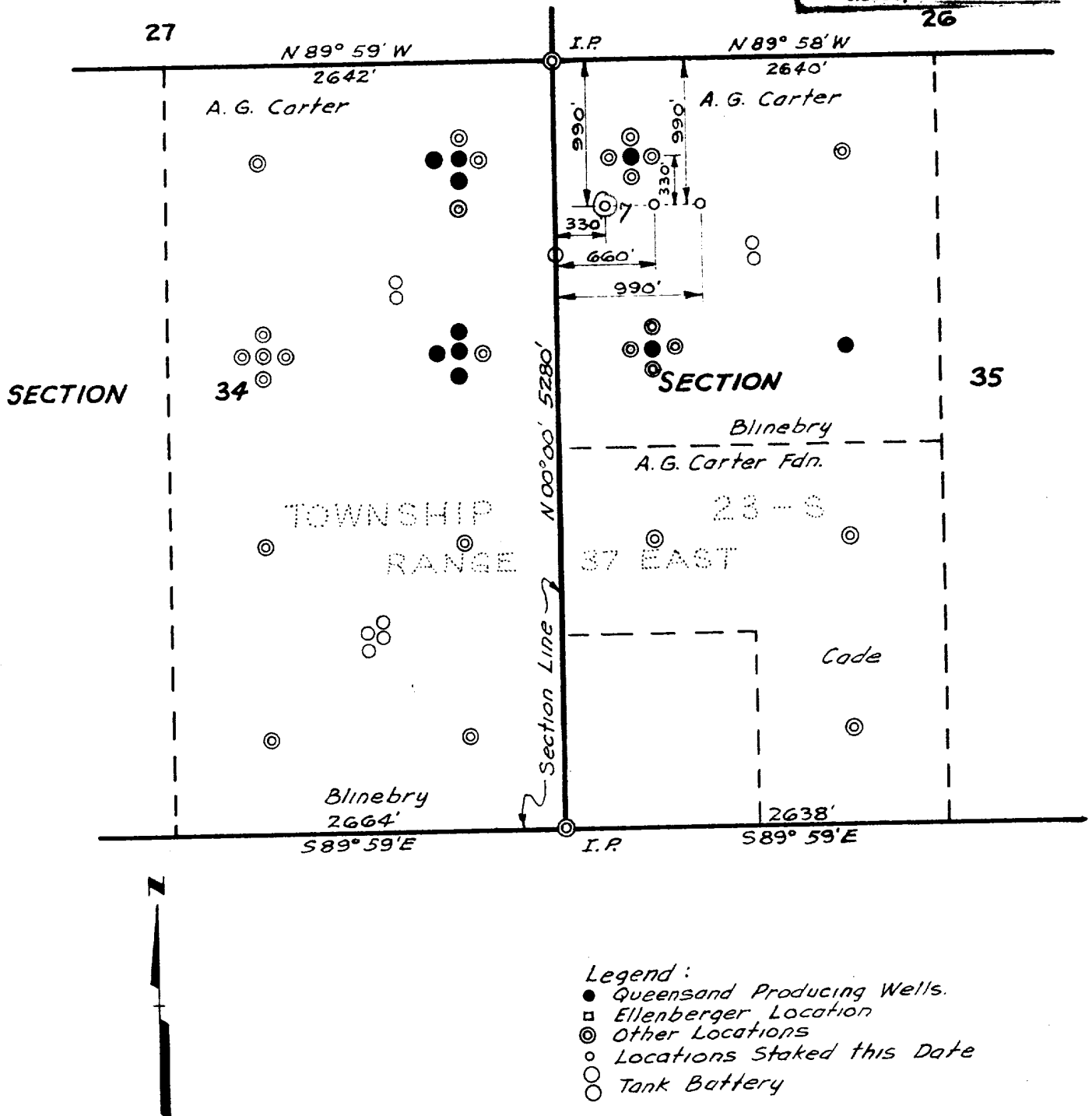
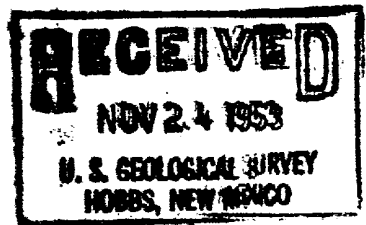
Company Acme G. CarterAddress P. O. Box 1688Kermit, Texas

By

Title

Roy A. Carter
Field manager

AMON G. CARTER
WELL LOCATIONS IN SECTION 35
TOWNSHIP 23-SOUTH, RANGE 37 EAST
LEA COUNTY, NEW MEXICO



Scale: 1"=1000'

STATE OF NEW MEXICO
COUNTY OF LEA

I, Kenneth E. Esmond, a Registered Land Surveyor of the State of New Mexico, do hereby certify that the above plat showing the "Amon G. Carter Well No. ____", 990' from the North line and 330' from the West line; "Amon G. Carter Well No. ____", 990' from the North line and 660' from the West line; "Amon G. Carter Well No. ____", 990' from the North line and 990' from the West line, all of the NW 1/4 of Section 35, Tsp-23-South, Range 37 East, Lea County, New Mexico, represents a survey made by me on the ground on October 5, 1953.

Kenneth E. Esmond