

Submit 3 Copies  
to Appropriate  
District Office

State of New Mexico  
Energy, Minerals and Natural Resources Department

Form C-103  
Revised 1-1-89

DISTRICT I  
P.O. Box 1980, Hobbs, NM 88240

DISTRICT II  
P.O. Drawer DD, Artesia, NM 88210

DISTRICT III  
1000 Rio Brazos Rd., Aztec, NM 87410

OIL CONSERVATION DIVISION  
P.O. Box 2088  
Santa Fe, New Mexico 87504-2088

WELL API NO. 30 - 025 - 12355
5. Indicate Type of Lease STATE <input checked="" type="checkbox"/> FEE <input type="checkbox"/>
6. State Oil & Gas Lease No. B-1732
7. Lease Name or Unit Agreement Name WEST DOLLARHIDE DRINKARD UNIT
8. Well No. 86
9. Pool name or Wildcat DOLLARHIDE TUBB/DRINKARD
10. Elevation (Show whether DF, RKB, RT, GR, etc.) 3155' GL, KB=12'

SUNDRY NOTICES AND REPORTS ON WELLS  
(DO NOT USE THIS FORM FOR PROPOSALS TO DRILL OR TO DEEPEN OR PLUG BACK TO A  
DIFFERENT RESERVOIR. USE "APPLICATION FOR PERMIT"  
(FORM C-101) FOR SUCH PROPOSALS.)

1. Type of Well: OIL WELL <input type="checkbox"/> GAS WELL <input type="checkbox"/> OTHER water injection well
2. Name of Operator Texaco Exploration and Production Inc.
3. Address of Operator P. O. Box 730 Hobbs, NM 88240
4. Well Location Unit Letter F : 1980 Feet From The NORTH Line and 630 Feet From The EAST Line Section 4 Township 25-S Range 38-E NMPM LEA

11. Check Appropriate Box to Indicate Nature of Notice, Report, or Other Data
NOTICE OF INTENTION TO:
PERFORM REMEDIAL WORK <input type="checkbox"/> PLUG AND ABANDON <input checked="" type="checkbox"/>
TEMPORARILY ABANDON <input type="checkbox"/> CHANGE PLANS <input type="checkbox"/>
PULL OR ALTER CASING <input type="checkbox"/>
OTHER: <input type="checkbox"/>
SUBSEQUENT REPORT OF:
REMEDIAL WORK <input type="checkbox"/> ALTERING CASING <input type="checkbox"/>
COMMENCE DRILLING OPNS. <input type="checkbox"/> PLUG AND ABANDONMENT <input type="checkbox"/>
CASING TEST AND CEMENT JOB <input type="checkbox"/>
OTHER: <input type="checkbox"/>

12. Describe Proposed or Completed Operations (Clearly state all pertinent details, and give pertinent dates, including estimated date of starting any proposed work) SEE RULE 1103.

- 1) Inform NMOCDD 24 hours prior to commencement of plugging.
- 2) Set retainer at approximately 5880' and establish pump-in rate. Squeeze Drinkard with 200 sx class "C" cement. Sting out and spot 10 sx on top. Circulate casing with 10# salt gel mud and displace to surface.
- 3) Run bond log and verify cement top at surface.
- 4) By wireline, set CIBP at 3900'. Spot 75 sx and fill casing to top of Queen at 3540. WOC. Tag cement.
- 5) Pump 20 sx from 2530'-2430' across base of salt section. WOC. Tag plug. Pump 20 sx from 1275'-1175'. WOC. Tag plug. Pump 65 sx from 348' to the surface. Circulate cement through annulus if possible and bring to surface.
- 6) Refill casing annulus from surface with 1" tubing if necessary.
- 7) Cut off wellhead and install marker. Clean location and restore surface.

I hereby certify that the information above is true and complete to the best of my knowledge and belief.

SIGNATURE Robert McNaughton TITLE Production Engineer DATE 6-22-93

TYPE OR PRINT NAME Robert McNaughton TELEPHONE NO. 397-0428

(This space for State Use)

ORIGINAL SIGNED BY JERRY SEXTON  
DISTRICT I SUPERVISOR

APPROVED BY \_\_\_\_\_ TITLE \_\_\_\_\_ DATE \_\_\_\_\_

CONDITIONS OF APPROVAL, IF ANY: \_\_\_\_\_

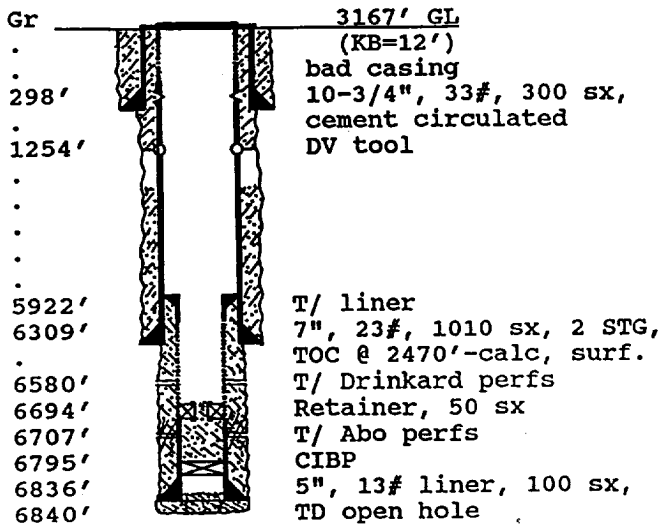
JUN 24 1993

## INJECTION WELL DATA SHEET

PO-113  
(6/93)

OPERATOR: Texaco Exploration & Production Inc. WELL: West Dollarhide Drinkard Unit #86  
 FOOTAGE LOCATION: 1980 FNL, 630 FEL Sec./Twn/Rng: Unit F, Sec 4, T-25-S, R-38-E  
Former Gulf Oil Co. H. Leonard NCT-G #12 Lea County, New Mexico

## SCHEMATIC



Tops:  
 Salt 1225'-2480'  
 Queen 3540'-3890'  
 Tubbs 6147'  
 Drinkard 6458'  
 Abo 6692'

## TABULAR DATA

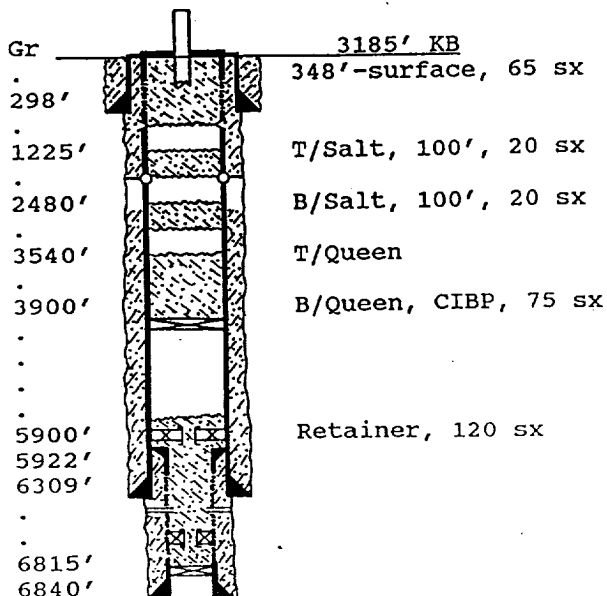
Surface Casing: Set at: 298'  
 Size 10-3/4", 33# Cemented with 300 sx.  
 TOC surface ' determined by circulation  
 Hole Size 13-3/4" Spud Date: 5-28-53  
 Intermediate casing: Set at: \_\_\_\_\_  
 Size \_\_\_\_\_ Cemented with \_\_\_\_\_ sx.  
 TOC \_\_\_\_\_ ' determined by \_\_\_\_\_  
 Hole Size (DV tool at 1254', 2nd stage circ.)  
 Production Casing: Set at: 6309'  
 Size 7", 23# Cemented with 1010 sx.  
 TOC 2470'/surf. determined by calc/ circ.  
 Hole Size 8-3/4, 5" liner from 5922'-6836'  
 Injection Interval: Lower Drinkard  
6580' to 6684' through: perforations  
 Tubing: \_\_\_\_\_

## Recommended Plug and Abandon Procedure

PO-113  
(6/93)

OPERATOR: Texaco Exploration & Production Inc WELL: West Dollarhide Drinkard Unit #86  
 FOOTAGE LOCATION: 1980 FNL, 630 FEL Sec./Twn/Rng: Unit F, Sec 4, T-25-S, R-38-E  
Lea County, New Mexico

## SCHEMATIC



## TABULAR DATA

Surface Plugs:  
 Size 348'-surface Cemented with 65 sx.  
 \* IF TOC is not at surface, fill annulus and circulate through casing holes.  
 Intermediate Plugs:  
 Size 1275'-1175' Cemented with 20 sx.  
2530'-2430' 20 sx  
3900'-3490' 75 sx  
 Class 'C' Cement, 1.32 ft<sup>3</sup> / sx  
 Producing Zone Plugs:  
 Size Retainer Cemented with 120 sx.  
 \* Fill liner with cement through tubing. If flowing, set retainer above liner.