

STATE OF NEW MEXICO
ENERGY AND MINERALS DEPARTMENT

OIL CONSERVATION DIVISION

P. O. BOX 2088

SANTA FE, NEW MEXICO 87501

Form C-101
Revised 10-1-78

NO. OF COPIES RECEIVED	
DISTRIBUTION	
SANTA FE	
FILE	
U.S.G.S.	
LAND OFFICE	
OPERATOR	

5A. Indicate Type of Lease
STATE ☒ FEE ☐

5. State Oil & Gas Lease No.
B-9312

APPLICATION FOR PERMIT TO DRILL, DEEPEN, OR PLUG BACK

1a. Type of Work

DRILL ☒ RE-ENTER

DEEPEN ☐

PLUG BACK ☐

b. Type of Well

OIL WELL ☐

GAS WELL ☐

OTHER Water injection well SINGLE ZONE ☒

MULTIPLE ZONE ☐

2. Name of Operator

Sirgo-Collier, Inc.

3. Address of Operator

P. O. Box 3531, Midland, Texas 79702

4. Location of Well

UNIT LETTER E LOCATED 1942 FEET FROM THE North LINE

AND 660 FEET FROM THE West LINE OF SEC. 5 TWP. 25-S RGE. 38-E NMPM

7. Unit Agreement Name
West Dollarhide Queen Sand Unit

8. Farm or Lease Name

9. Well No.
59

10. Field and Pool, or Wildcat
Dollarhide Queen

12. County
Lea

11. Elevations (Show whether DF, RT, etc.)

3121'. DF

21A. Kind & Status Plug. Bond

Cash Statewide

19. Proposed Depth

3960'

19A. Formation

Queen

20. Rotary or C.T.

Rotary

22. Approx. Date Work will start

January 28, 1988

23.

PROPOSED CASING AND CEMENT PROGRAM

SIZE OF HOLE	SIZE OF CASING	WEIGHT PER FOOT	SETTING DEPTH	SACKS OF CEMENT	EST. TOP
12-1/4"	* 9-5/8"	36#	1171'	400 sx	Surface
8-3/4"	* 7"	20#	3605'	250 sx	Unknown
6-1/8"	4-1/2"	10.5#	TD	500 sx	Surface

Sirgo-Collier, Inc. plans to re-enter and deepen to 3960' this P&A (12-29-72) Queen water injection well. New 4-1/2" casing will be run to TD and cemented to surface, the Queen zone will be selectively perforated and acidized, and a Baker AD-1 packer will be run on 2-3/8" tubing, set approximately 100' above the top perf.

* Casing already present in the wellbore.

ABOVE SPACE DESCRIBE PROPOSED PROGRAM; IF PROPOSAL IS TO DEEPEN OR PLUG BACK, GIVE DATA ON PRESENT PRODUCTIVE ZONE AND PROPOSED NEW PRODUCTION ZONE. GIVE BLOWOUT PREVENTER PROGRAM, IF ANY.

hereby certify that the information above is true and complete to the best of my knowledge and belief.

Signed Amy L. Whitley Title Agent Date December 14, 1987

(This space for State Use)

ORIGINAL SIGNED BY JERRY SEXTON

DISTRICT 1 SUPERVISOR

APPROVED BY

TITLE

DATE

CONDITIONS OF APPROVAL, IF ANY:

SUBJECT TO APPROVAL OF AUTHORITY TO INJECT

JAN - 4 1988

Permit Expires 6 Months From Approval
Date Unless Drilling Underway.

**NEW MEXICO OIL CONSERVATION COMMISSION
WELL LOCATION AND ACREAGE DEDICATION PLAT**

Form C-102
Supersedes C-128
Effective 1-1-65

All distances must be from the outer boundaries of the Section.

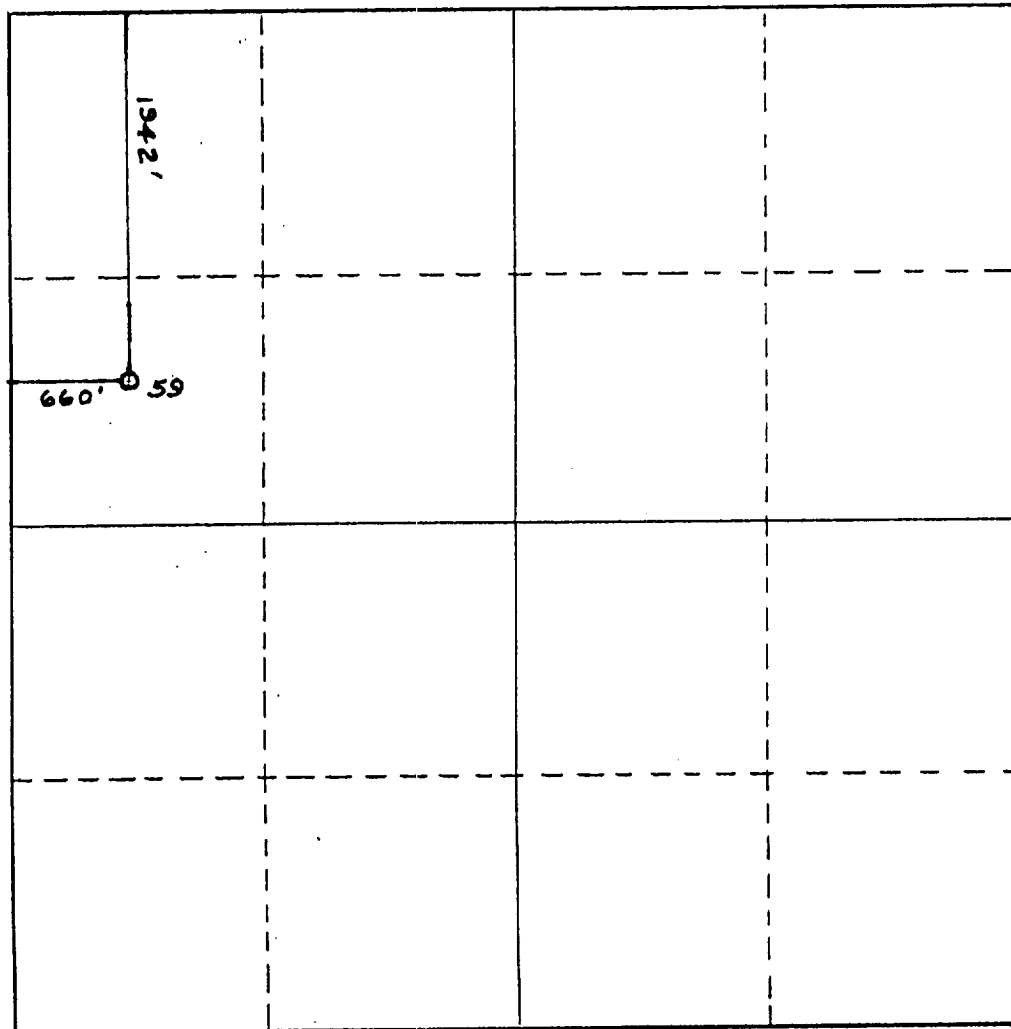
Operator Sirgo-Collier, Inc.			Lease West Dollarhide Queen Sand Unit		Well No. 59
Unit Letter E	Section 5	Township 25S	Range 38E	County Lea	
Actual Footage Location of Well: 1942 feet from the North line and 660 feet from the West line					
Ground Level Elev. 3111'	Producing Formation Queen		Pool Dollarhide Queen		Dedicated Acreage 40 Acres

1. Outline the acreage dedicated to the subject well by colored pencil or hatchure marks on the plat below.
2. If more than one lease is dedicated to the well, outline each and identify the ownership thereof (both as to working interest and royalty).
3. If more than one lease of different ownership is dedicated to the well, have the interests of all owners been consolidated by communitization, unitization, force-pooling, etc?

☒ Yes ☐ No If answer is "yes," type of consolidation Unitization, R-2356

If answer is "no," list the owners and tract descriptions which have actually been consolidated. (Use reverse side of this form if necessary.) _____

No allowable will be assigned to the well until all interests have been consolidated (by communitization, unitization, forced-pooling, or otherwise) or until a non-standard unit, eliminating such interests, has been approved by the Commission.



CERTIFICATION

I hereby certify that the information contained herein is true and complete to the best of my knowledge and belief.

Amy L. Whitley

Name
Amy L. Whitley

Position
Agent

Company
Sirgo-Collier, Inc.

Date
December 29, 1987

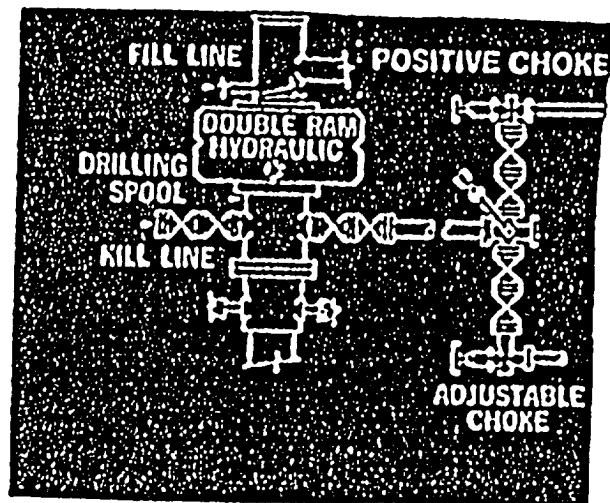
I hereby certify that the well location shown on this plat was plotted from field notes of actual surveys made by me or under my supervision, and that the same is true and correct to the best of my knowledge and belief.

Date Surveyed _____

Registered Professional Engineer and/or Land Surveyor _____

Certificate No. _____

BOP



RECEIVED

DEC 30 1987

OCD

HOBBS OFFICE