

DUPLICATE

N. MEXICO OIL CONSERVATION COMMISSION
Santa Fe, New Mexico

RECEIVED

NOTICE OF INTENTION TO DRILL OR RECOMPLETE

Notice must be given to the District Office of the Oil Conservation Commission and approval obtained before drilling or recompletion begins. If changes in the proposed plan are considered advisable, a copy of this notice showing such changes will be returned to the sender. Submit this notice in QUINTUPLICATE. One copy will be returned following approval. See additional instructions in Rules and Regulations of the Commission.

Midland, Texas

(Place)

February 25, 1954

(Date)

OIL CONSERVATION COMMISSION
SANTA FE, NEW MEXICO

Gentlemen:

You are hereby notified that it is our intention to commence the (Drilling) (Recompletion) of a well to be known as

W. F. Stricklin

(Company or Operator)

Whitten

(Lease)

Well No. 1

Unit D

(Unit)

located 660 feet from the North line and 660 feet from the

West

line of Section 5

T. -24-S

R. -36-E, NMPM.

(GIVE LOCATION FROM SECTION LINE)

Undesignated

Pool,

Lea

County

If State Land the Oil and Gas Lease is No.

If patented land the owner is. Fee Land - Whitten fee.

Address.

We propose to drill well with drilling equipment as follows: Cable Tools.

The status of plugging bond is one-well bond. ~~Five-well bond~~
~~submitted with XXXXX~~ \$5,000 Plugging Bond.Drilling Contractor W. F. Stricklin, 140 Allen Bldg.,
Midland, TexasWe intend to complete this well in the Queen
formation at an approximate depth of 3800 feet.

CASING PROGRAM

We propose to use the following strings of Casing and to cement them as indicated:

Size of Hole	Size of Casing	Weight per Foot	New or Second Hand	Depth	Sacks Cement
12"	10-3/4"	40#	New	400'	200
10"	8-5/8"	28#	New	900'	400

If changes in the above plans become advisable we will notify you immediately.

ADDITIONAL INFORMATION (If recompletion give full details of proposed plan of work.)

This unit contains 40.62 acres.

Approved APR 20 1954, 19.....
Except as follows:

OIL CONSERVATION COMMISSION

By

Engineer District 1

Sincerely yours,

W. F. Stricklin

(Company or Operator)

By

Position

Agent

Send Communications regarding well to

Name

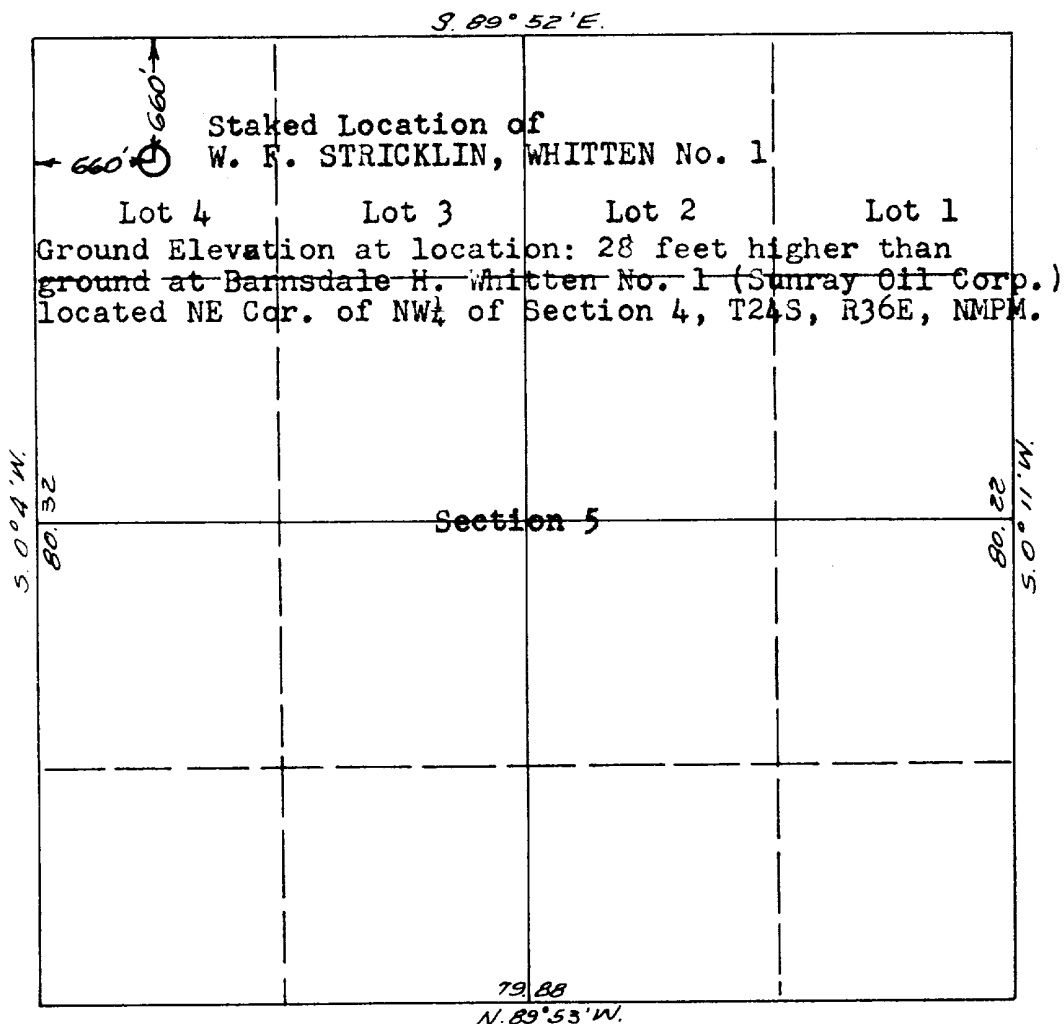
K. Yarbrough

Address

Box 1471

Midland, Texas

W. F. STRICKLIN
 WHITTEN NO. 1
 NW $\frac{1}{4}$ NW $\frac{1}{4}$ Section 5
 Twp. 24 S., Rge. 36 E.,
 N. M. P. M.
 Lea County, New Mexico



I, James T. Bridgforth hereby certify that I am the Registered Professional Engineer and Land Surveyor who prepared the above plat from field notes of actual surveys made under my direction and the same are true and correct to the best of my knowledge and belief.

James T. Bridgforth
 Registered Professional Engineer and
 Land Surveyor - License No. 726

LEA ENGINEERING CO.
 P. O. Box 141
 Lovington, New Mex.