

NUMBER OF COPIES RECEIVED

DISTRIBUTION

SANTA FE		
FILE		
U.S.G.S.		
LAND OFFICE		
TRANSPORTER	OIL	
	GAS	
PRODUCTION OFFICE		
OPERATOR		

NEW MEXICO OIL CONSERVATION COMMISSION

FORM C-103
(Rev 3-55)

MISCELLANEOUS REPORTS ON WELLS

(Submit to appropriate District Office as per Commission Rule 1106)

Name of Company Astec Oil & Gas Company				Address P. O. Box 837, Hobbs, New Mexico			
Lease State SR	Well No. 3	Unit Letter F	Section 16	Township 24-S	Range 36-E		
Date Work Performed 12-21-64	Pool Undesignated			County Lea			

THIS IS A REPORT OF: (Check appropriate block)

- ☐ Beginning Drilling Operations
 ☒ Casing Test and Cement Job
 ☐ Other (Explain):
- ☐ Plugging
 ☐ Remedial Work

Detailed account of work done, nature and quantity of materials used, and results obtained.

T.D. 3820'. Ran 90 joints 5 $\frac{1}{2}$ ", 14 $\frac{1}{2}$ ", J-55 Casing to 3819. Cemented with 125 sacks Incoor with 4% gel and 6 pounds salt per sack and 75 sacks Incoor with 2% gel and 2% Calcium Chloride. Pumped plug to 3776 at 1:00 p.m. 12-21-64. After 6 hours tested casing to 1000 psi for 30 minutes. O.K. Ran temperature survey. Top cement at 3160.

18 hr. min.

Witnessed by Jerry Rakov	Position District Engineer	Company Astec Oil & Gas Company
------------------------------------	--------------------------------------	---

FILL IN BELOW FOR REMEDIAL WORK REPORTS ONLY

ORIGINAL WELL DATA

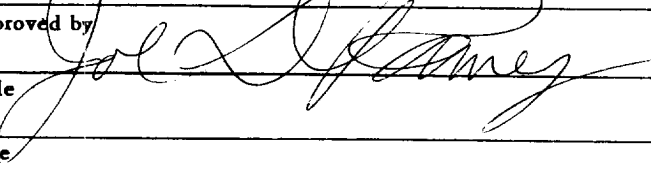
D F Elev.	T D	P B T D	Producing Interval	Completion Date
Tubing Diameter	Tubing Depth	Oil String Diameter	Oil String Depth	
Perforated Interval(s)				
Open Hole Interval		Producing Formation(s)		

RESULTS OF WORKOVER

Test	Date of Test	Oil Production BPD	Gas Production MCFPD	Water Production BPD	GOR Cubic feet/Bbl	Gas Well Potential MCFPD
Before Workover						
After Workover						

OIL CONSERVATION COMMISSION

I hereby certify that the information given above is true and complete to the best of my knowledge.

Approved by 	Name original signed by: LETTER NAME
Title	Position District Superintendent
Date	Company Astec Oil & Gas Company

NUMBER OF COPIES RECEIVED			
DISTRIBUTION			
SANTA FE			
FILE			
U.S.G.S.			
LAND OFFICE			
TRANSPORTER	OIL		
	GAS		
PRORATION OFFICE			
OPERATOR			

NEW MEXICO OIL CONSERVATION COMMISSION
Santa Fe, New Mexico

Form C-101
Revised 12/1/55

NOTICE OF INTENTION TO DRILL

Notice must be given to the District Office of the Oil Conservation Commission and approval obtained before drilling or recompletion begins. If changes in the proposed plan are considered advisable, a copy of this notice showing such changes will be returned to the sender. Submit this notice in QUINTUPLICATE. One copy will be returned following approval. See additional instructions in Rules and Regulations of the Commission. If State Land submit 6 Copies. Attach Form C-128 in triplicate to first 3 copies of Form C-101.

Hobbs, New Mexico
(Place)

December 8, 1964
(Date)

OIL CONSERVATION COMMISSION
SANTA FE, NEW MEXICO

Gentlemen:

You are hereby notified that it is our intention to commence the Drilling of a well to be known as

Artec Oil & Gas Company

(Company or Operator)

State 22

(Lease)

, Well No. 3, in 7 The well is

(Unit)

located 1980 feet from the North line and 1980 feet from the West line of Section 16, T. 24, R. 36, NMPM.

(GIVE LOCATION FROM SECTION LINE)

Undesignated Pool, Lee County

D	C	B	A
E	D	G	H
L	K	J	I
M	N	O	P

If State Land the Oil and Gas Lease is No. 00-3819

If patented land the owner is _____

Address _____

We propose to drill well with drilling equipment as follows: Rotary Tools

from surface to total depth.

The status of plugging bond is State Wide

Drilling Contractor Not determined

We intend to complete this well in the Seven Rivers formation at an approximate depth of 3750 feet.

CASING PROGRAM

We propose to use the following strings of Casing and to cement them as indicated:

Size of Hole	Size of Casing	Weight per Foot	New or Second Hand	Depth	Sacks Cement
<u>12-1/4</u>	<u>8-5/8"</u>	<u>24 1/2</u>	<u>New</u>	<u>350</u>	<u>250 (Circulated)</u>
<u>7-7/8</u>	<u>4 1/2</u>	<u>9-5/8</u>	<u>New</u>	<u>3750</u>	<u>300 ex NOT</u>

If changes in the above plans become advisable we will notify you immediately.

ADDITIONAL INFORMATION (If recompletion give full details of proposed plan of work.)

Sufficient cement on 4 1/2" casing to bring cement top to base salt.

Approved 12/15/64, 19____
Except as follows:

Sincerely yours,

Artec Oil & Gas Company

By ESTER L. SUKE

Position District Superintendent

Send Communications regarding well to

Name Artec Oil & Gas Company

Address P. O. Box 837, Hobbs, New Mexico

OIL CONSERVATION COMMISSION

By _____

NEW MEXICO OIL CONSERVATION COMMISSION
WELL LOCATION AND ACREAGE DEDICATION PLAT

FORM C-128
Revised 5/1/57

SEE INSTRUCTIONS FOR COMPLETING THIS FORM ON THE REVERSE SIDE

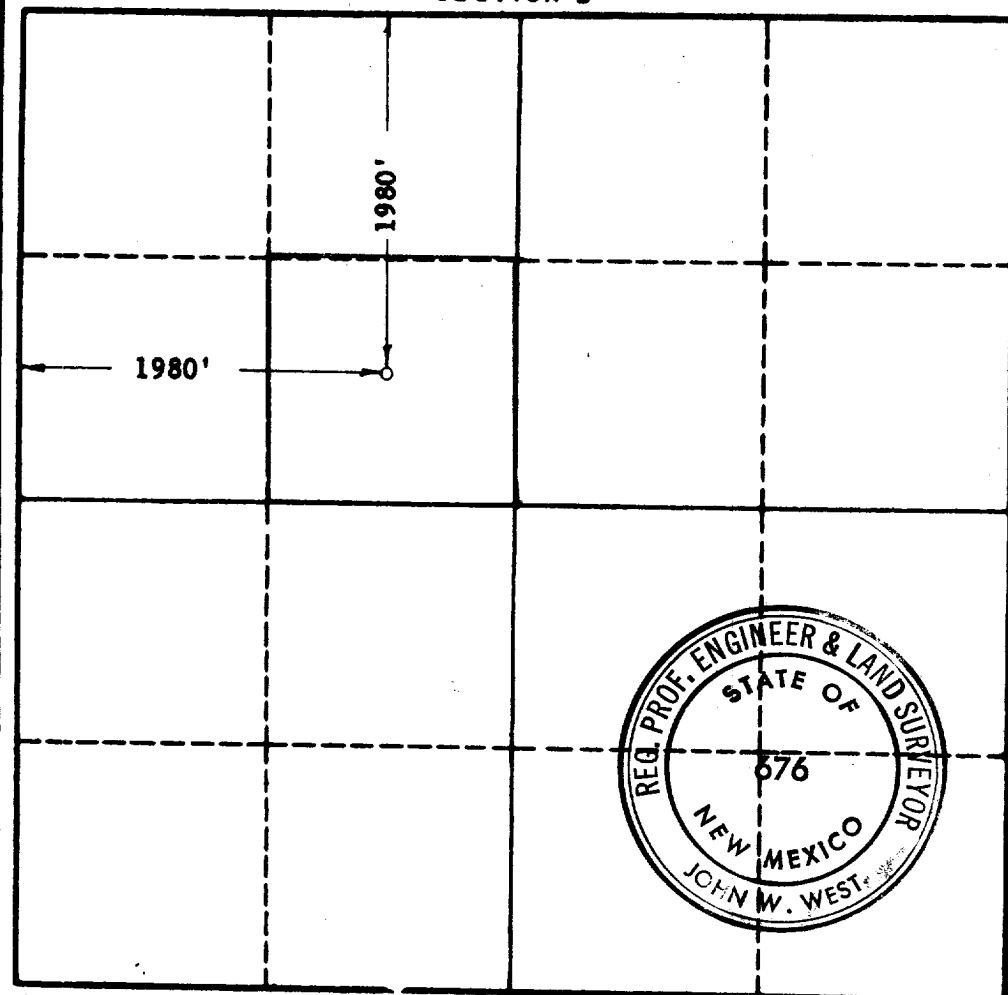
SECTION A

Operator AZTEC OIL & GAS COMPANY		Lease STATE "SR"		Well No. 3
Unit Letter F	Section 16	Township 24 SOUTH	Range 36 EAST	County LEA
Actual Footage Location of Well: 1980 feet from the NORTH line and 1980 feet from the WEST line				
Ground Level Elev. 3380.7	Producing Formation Seven Rivers	Pool Undesignated	Dedicated Acreage: 40 Acres	

1. Is the Operator the only owner in the dedicated acreage outlined on the plat below? YES ☒ NO ____ . ("Owner" means the person who has the right to drill into and to produce from any pool and to appropriate the production either for himself or for himself and another. (65-3-29 (e) NMSA 1955 Comp.)
2. If the answer to question one is "no," have the interests of all the owners been consolidated by communitization agreement or otherwise? YES ____ NO ____ . If answer is "yes," Type of Consolidation ____
3. If the answer to question two is "no," list all the owners and their respective interests below:

Owner	Land Description

SECTION B



CERTIFICATION

I hereby certify that the information in SECTION A above is true and complete to the best of my knowledge and belief.

Name original signed by:
LESTER L. DUKE

Position
District Superintendent

Company
Artec Oil & Gas Company

Date
December 9, 1964

I hereby certify that the well location shown on the plat in SECTION B was plotted from field notes of actual surveys made by me or under my supervision, and that the same is true and correct to the best of my knowledge and belief.

Date Surveyed
DECEMBER 8, 1964

Registered Professional Engineer and/or Land Surveyor, **JOHN W. WEST**

John W. West

Certificate No.
N. M. - P. E. & L. S. NO. 676

0 330 660 990 1320 1650 1980 2310 2640 2970 3300 3630 3960 4290 4620 4950 5280 5610 5940 6270 6600