

District I  
1625 N. French Dr., Hobbs, NM 88240

State of New Mexico  
Energy, Minerals & Natural Resources Department

Revised February 21, 1994  
instructions on back

District II  
PO Drawer DD, Artesia, NM 88211-0719

## OIL CONSERVATION DIVISION

Submit to Appropriate District Office

District III  
1000 Rio Brazos Rd. Aztec, NM 87410

PO Box 2088

State Lease - 4 Copies

District IV  
PO Box 2088, Santa Fe, NM 87504-2088

Santa Fe, NM 87504-2088

Fee Lease - 3 Copies

☐ AMENDED REPORT

## WELL LOCATION AND ACREAGE DEDICATION PLAT

API Number 30-025- 20976		2 Pool Code 79240	3 Pool Name Jalmat Tansill Yates 7 Rvrs (Pro Gas)	
4 Property Code 24669	5 Property Name State A A/C 1			6 Well Number 108
7 OGRID No. 162791	8 Operator Name Raptor Resources			9 Elevation

## 10 Surface Location

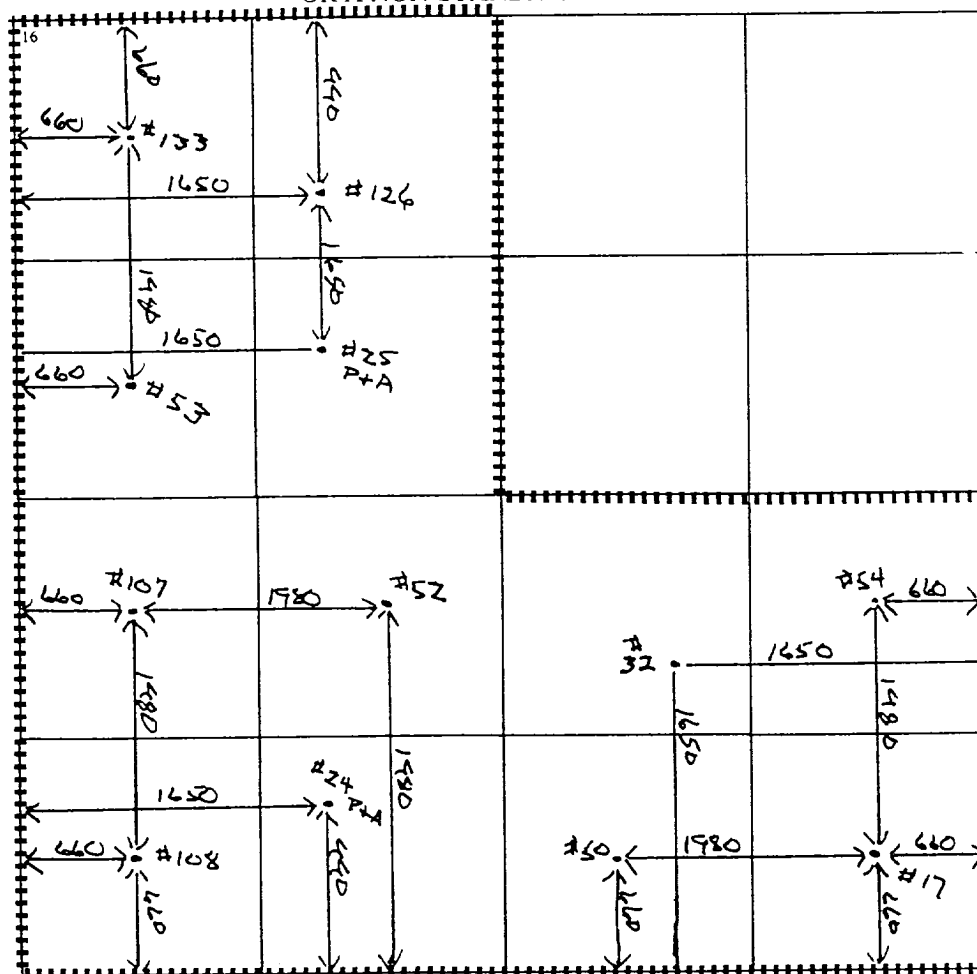
UL or lot no.	Section	Township	Range	Lot Idn	Feet from the	North/South line	Feet from the	East/West line	County
M	24	23S	36E		660	South	660	West	Lea

## 11 Bottom Hole Location If Different From Surface

UL or lot no	Section	Township	Range	Lot Idn	Feet from the	North/South line	Feet from the	East/West line	County

12 Dedicated Acres 480	13 Joint or Infill	14 Consolidation Code	15 Order No. R-11590	Applied For
---------------------------	--------------------	-----------------------	-------------------------	-------------

NO ALLOWABLE WILL BE ASSIGNED TO THIS COMPLETION UNTIL ALL INTERESTS HAVE BEEN CONSOLIDATED  
OR A NON-STANDARD UNIT HAS BEEN APPROVED BY THE DIVISION



## 17 OPERATOR CERTIFICATION

I hereby certify that the information contained herein is true and complete to the best of my knowledge and belief

*Bill R. Keathly*  
Signature

Bill R. Keathly

Printed Name

Regulatory Agent

Title

8-6-01

Date

## 18 SURVEYOR CERTIFICATION

I hereby certify that the well location shown on this plat was plotted from field notes of actual surveys made by me or under my supervision, and that the same is true and correct to the best of my belief.

Date of Survey

Signature and Seal of Professional Surveyor:

Certificate Number

District I  
PO Box 1980, Hobbs, NM 88241-1980

District II  
PO Drawer DD, Artesia, NM 88211-0719

District III  
1000 Rio Brazos Rd. Aztec, NM 87410

District IV  
PO Box 2088, Santa Fe, NM 87504-2088

State of New Mexico  
Energy, Minerals & Natural Resources Department

OIL CONSERVATION DIVISION  
PO Box 2088  
Santa Fe, NM 87504-2088

Form C-102

Revised February 21, 1994

instructions on back

Submit to Appropriate District Office

State Lease - 4 Copies

Fee Lease - 3 Copies

☐ AMENDED REPORT

### WELL LOCATION AND ACREAGE DEDICATION PLAT

API Number <b>30-035-20976</b>		2 Pool Code <b>79240</b>	3 Pool Name <b>Jalmat, TnsI, Yts, 7-Rivers (Pro Gas)</b>	
4 Property Code <b>24669</b>	5 Property Name <b>State 'A' A/C I</b>			6 Well Number <b>108</b>
7 OGRID No. <b>162791</b>	8 Operator Name <b>Raptor Resources, Inc.</b>			9 Elevation

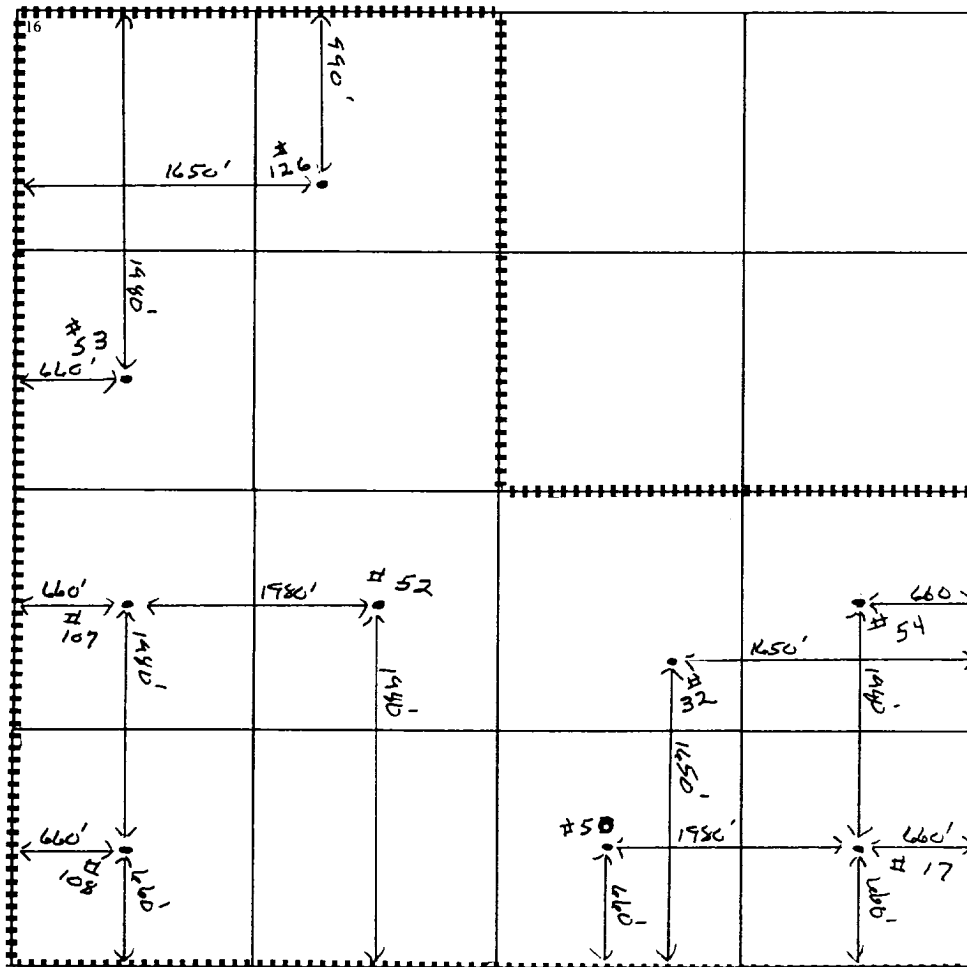
#### 10 Surface Location

UL or lot no. <b>M</b>	Section <b>24</b>	Township <b>23S</b>	Range <b>36E</b>	Lot Idn	Feet from the <b>660</b>	North/South line <b>South</b>	Feet from the <b>660</b>	East/West line <b>West</b>	County <b>Lea</b>
---------------------------	----------------------	------------------------	---------------------	---------	-----------------------------	----------------------------------	-----------------------------	-------------------------------	----------------------

#### 11 Bottom Hole Location If Different From Surface

UL or lot no.	Section	Township	Range	Lot Idn	Feet from the	North/South line	Feet from the	East/West line	County
12 Dedicated Acres <b>480</b>		13 Joint or Infill		14 Consolidation Code		15 Order No.			
Applied For									

NO ALLOWABLE WILL BE ASSIGNED TO THIS COMPLETION UNTIL ALL INTERESTS HAVE BEEN CONSOLIDATED  
OR A NON-STANDARD UNIT HAS BEEN APPROVED BY THE DIVISION



#### 17 OPERATOR CERTIFICATION

I hereby certify that the information contained herein is true and complete to the best of my knowledge and belief

*Bill R. Keathly*  
Signature

Bill R. Keathly  
Printed Name

Regulatory Agent - Raptor  
Title

9-22-99  
Date

#### 18 SURVEYOR CERTIFICATION

I hereby certify that the well location shown on this plat was plotted from field notes of actual surveys made by me or under my supervision, and that the same is true and correct to the best of my belief.

Date of Survey

Signature and Seal of Professional Surveyor:

Certificate Number

Submit to Appropriate  
District Office  
State Lease - 4 copies  
Fee Lease - 3 copies

State of New Mexico  
Energy, Minerals and Natural Resources Department

Form C-102  
Revised 1-1-89

# OIL CONSERVATION DIVISION

DISTRICT I  
P.O. Box 1980, Hobbs, NM 88240

P.O. Box 2088  
Santa Fe, New Mexico 87504-2088

DISTRICT II  
P.O. Drawer DD, Artesia, NM 88210

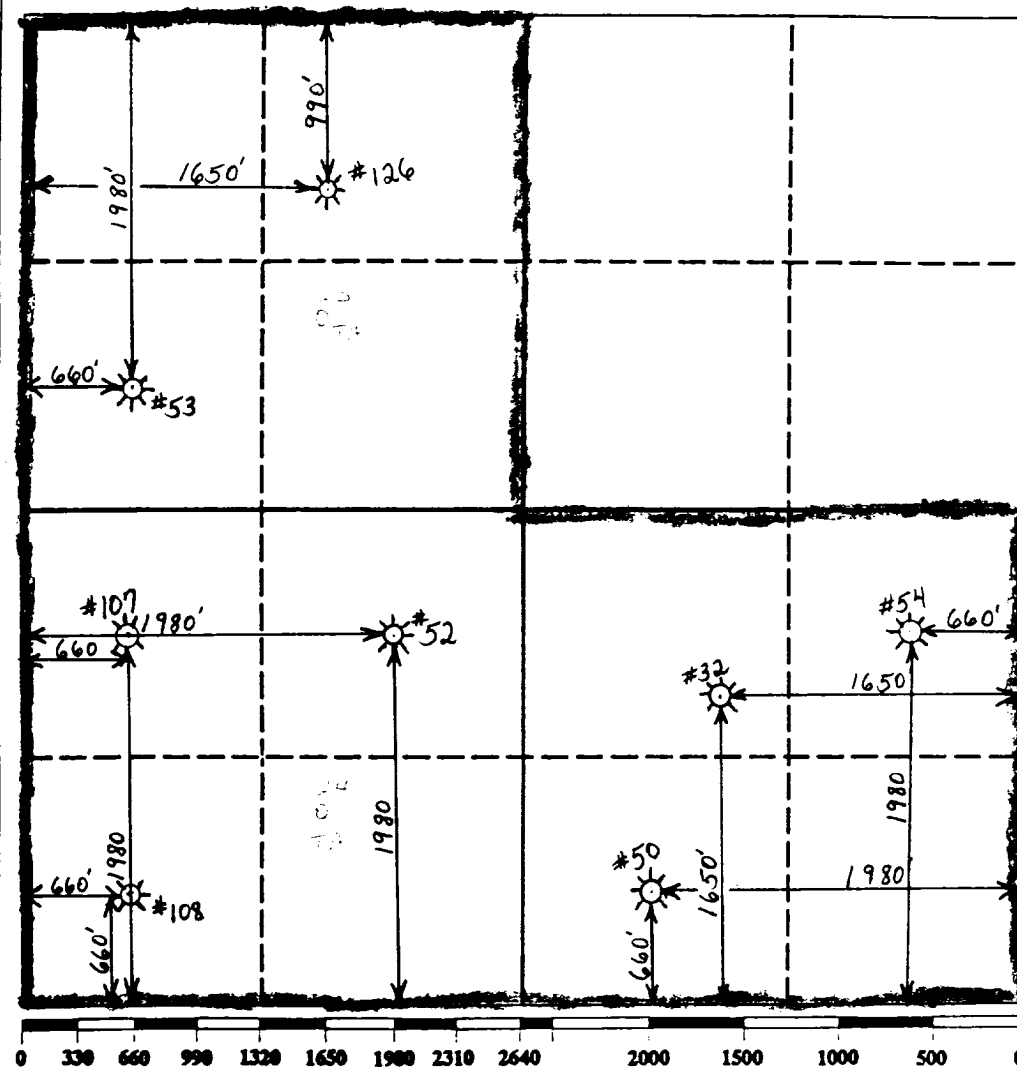
DISTRICT III  
1000 Rio Brazos Rd., Aztec, NM 87410

## WELL LOCATION AND ACREAGE DEDICATION PLAT

All Distances must be from the outer boundaries of the section

Operator <b>Clayton W. Williams, Jr., Inc.</b>			Lease <b>State "A" A/C 1</b>		Well No <b>108</b>
Unit Letter <b>M</b>	Section <b>24</b>	Township <b>23S</b>	Range <b>36E</b>	County <b>NMPM Lea</b>	
Actual Footage Location of Well: <b>660</b> feet from the <b>South</b> line and <b>660</b> feet from the <b>West</b> line					
Ground level Elev. <b>3352'</b>	Producing Formation <b>Tansill-Yates</b>		Pool <b>Jalmat-TNSL-YTS-7R</b>	Dedicated Acreage: <b>480</b> Acres	

- Outline the acreage dedicated to the subject well by colored pencil or hatchure marks on the plat below.
- If more than one lease is dedicated to the well, outline each and identify the ownership thereof (both as to working interest and royalty).
- If more than one lease of different ownership is dedicated to the well, have the interest of all owners been consolidated by communitization, unitization, force-pooling, etc.?  
☐ Yes ☐ No If answer is "yes" type of consolidation \_\_\_\_\_  
If answer is "no" list the owners and tract descriptions which have actually been consolidated. (Use reverse side of this form if necessary).  
No allowable will be assigned to the well until all interests have been consolidated (by communitization, unitization, forced-pooling, or otherwise) or until a non-standard unit, eliminating such interest, has been approved by the Division.



### OPERATOR CERTIFICATION

I hereby certify that the information contained herein is true and complete to the best of my knowledge and belief.

Signature \_\_\_\_\_

Printed Name \_\_\_\_\_

**David G. Grafe**

Position \_\_\_\_\_

**Production Engineer**

Company \_\_\_\_\_

**Clayton W. Williams, Jr., Inc.**

Date \_\_\_\_\_

**11-20-91**

### SURVEYOR CERTIFICATION

I hereby certify that the well location shown on this plat was plotted from field notes of actual surveys made by me or under my supervision, and that the same is true and correct to the best of my knowledge and belief.

Date Surveyed \_\_\_\_\_

Signature & Seal of Professional Surveyor \_\_\_\_\_

Certificate No. \_\_\_\_\_

**WRS COMPLETION REPORT**

COMPLETIONS SEC 24 TWP 23S RGE 36E  
PI# 30-T-0028 02/14/92 30-025-20976-0002 PAGE 1

NMEX LEA \* 660FSL 660FWL SEC SW SW  
STATE COUNTY FOOTAGE SPOT  
WILLIAMS CLAYTON W JR D X DG  
OPERATOR WELL CLASS INIT F N  
108 STATE "A" A/C 1  
WELL NO LEASE NAME  
3352GR JALMAT  
OPER ELEV FIELD POOL AREA

API 30-025-20976-0002  
LEASE NO. PERMIT OR WELL I.D. NO.  
01/20/1992 01/27/1992 WO-UNIT VERT GAS-WO  
SPUD DATE COMP DATE TYPE TOOL HOLE TYPE STATUS  
3320 YATES NOT RPTD  
PROJ. DEPTH PROJ. FORM CONTRACTOR  
DTD 3665 PB 3320 OTD 3665 FM/TD QUEEN  
DRILLERS T.D. LOG T.D. PLUG BACK TD O.D. T.D. FORM T.D.

**LOCATION DESCRIPTION**

10 MI SW EUNICE, NM

**CASING/LINER DATA**

REPLACED 538 FT BAD 4 1/2 CSG W/NEW CSG

**TUBING DATA**

TBG-NO DETAILS

**INITIAL POTENTIAL**

IPF 220 MCFD 10BW 24HRS  
YATES PERF W/ 15/IT 2893- 3107  
PERF 2893- 3107  
ACID 2893- 3107 1500GALS  
15% NEFE  
SWFR 2893- 3107 85500GALS 215000LBS SAND  
GOR DRY ADDTVGELA

GTY (GAS)-NO DETAILS

**PRODUCTION TEST DATA**

SVN R ON PERF 3400- 3460  
PERF 3400- 3460  
UNDG @ 3320 3400- 3460

CONTINUED IC# 300257004392

COMPLETIONS  
PI# 30-T-0028 02/14/92 SEC 24 TWP 23S RGE 36E  
30-025-20976-0002 PAGE 2

WILLIAMS CLAYTON W JR  
108 STATE "A" A/C 1 D X DG

LOGS AND SURVEYS /INTERVAL,TYPE/

LOGS CSNG

DRILLING PROGRESS DETAILS

WILLIAMS CLAYTON W JR  
6 DESTA DRIVE STE 3000  
MIDLAND, TX 79705  
915-682-6324

OWWO: OLD INFO: FORMERLY TEXAS PACIFIC OIL  
#108 STATE "A" A/C 1. ELEV 3352 GR. SPUD  
10/31/67. 7 5/8 @ 324 W/250 SX, 4 1/2 @  
3665 W/250 SX. OTD 3665. COMP 11/20/67.  
IPP 3 BO, 120 BWP. PROD ZONE:  
SEVEN RIVERS-QUEEN 3400-3460.  
02/10 LOC/1992/  
02/10 3665 TD, PB 3320  
COMP 1/27/92, IPF 220 MCFG, 10 BWP, GOR  
DRY, GTY (GAS) (NR)  
PROD ZONE - YATES 2893-3107  
FIRST REPORT & COMPLETION

COUNTY	LEA	FIELD	Langlie-Mattix	STATE	NM	OWWO
OPR	TEXAS PACIFIC OIL CO.					MAP
	108 State "A" Acct. 1					
	Sec. 24, T-23-S, R-36-E					CO. ORD
	660' FSL, 660' FWL of Sec.					
	Re-Spd 10-31-67					CLASS
	Re-Cmp 11-20-67					OWOF EL. [REDACTED]
		FORMATION	DATUM	FORMATION	DATUM	
CSG & SX - TUBING						
7 5/8" 324' 250						
4 1/2" 3665' 250						
LOGS EL GR RA IND HC A						
	TD 3665', PBD 3480'					
Seven Rivers-Queen Perfs 3400-60' - NO NEW POTENTIAL ELI						

Distribution limited and publication prohibited by subscribers' agreement.  
Reproduction rights reserved by Williams & Lee Scouting Service, Inc.

CONT.	PROP. DEPTH	INCL. NO.
DATE		

12-11-67: OWWO  
 (Orig. Cmp 8-8-64 thru perfs 3493-3596'  
 OTD 3665', OPB 3613')  
 12-14-67: TD 3665', PBD 3480', COMPLETE  
 BP @ 3480'  
 Perf @ 3400', 3403', 3405', 3417', 3426',  
 3436', 3439', 3445', 3453', 3460' W/L SPL  
 Acid (3400-60') 1000 gals.  
 Frac (3400-60') 20,000 gals brine +  
 15,000# sd.  
 Pmpd 3 BO + 120 BW in 24 hrs (3400-60')

COUNTY	LEA	FIELD	Langlie-Mattix	STATE	N.M.
OPR	TEXAS PACIFIC OIL COMPANY				MAP
108 State of New Mexico "A" (Acct. 1)					
Sec. 24, T-23-S, R-36-E				CO-ORD	
660' fr S & W Lines of Sec.					
Spud 7-26-64				CLASS	EL 3365
Comp 8-8-64		FORMATION	DATUM	FORMATION	DATUM
CSG & SX - TUBING		LOG:			
		Anhy 1180			
		Yates 2896			
		7-R 3127			
		Queen 3474			
LOGS EL GR RA IND HC A					
TD 3665', PBD 3613'					

IP Queen Perfs 3493-3596' Flwd 78 BOPD + 116 BW. Pot. Based on 24 hr test thru 20/64" chk., TP 460#, CP Pkr, Gravity 30.7.

Distribution limited and publication prohibited by subscribers' agreement.  
Reproduction rights reserved by Williams & Lee Scouting Service, Inc.

CONT. PROP DEPTH 3700' TYPE  
DATE

8-3-64 F.R. 6-25-64  
PD 3700' - Queen  
TD 3665', WOC.  
Cored 3475-3525', rec 50' dolo. & sh., w/scatt. shows.  
Cored 3525-75', rec 50' same.  
Cored 3575-3625', rec 50' same.  
Cored 3625-65', rec 40' same.

8-10-64 TD 3665', PED 3616', tstg.  
Perf @ 3623', 3625', 3627', 3630', 3632', 3635', 3642', 3646', 3654', & 3656' W/1 SPI  
Ac. 1500 gals.  
Frac 20,000 gals oil + 20,000# sd.  
Swbd 54 BLO in 10 hrs & swbd dry.  
Set BP @ 3616'.  
Perf @ 3493', 3500', 3502', 3505', 3508', 3515', 3519', 3522', 3529', 3533', 3555', 3563', 3574', 3587' & 3596' W/1 SPI  
Ac. 2000 gals.  
Flwd 158 BNO + 17 BW/22 hrs thru 16/64" chk., TP 460#

LEA COUNTY Langlie-Mattix N.M. Sec. 24-23S-36E  
TEXAS PACIFIC OIL CO., #108 State of New Mexico "A" (Acct. 1)  
8-17-64 TD 3665', PBD 3616', COMPLETED. Page #2