

NEW MEXICO OIL CONSERVATION COMMISSION
WELL LOCATION AND ACREAGE DEDICATION PLAT

FORM C-128
Revised 5/1/57

SEE INSTRUCTIONS FOR COMPLETING THIS FORM ON THE REVERSE SIDE

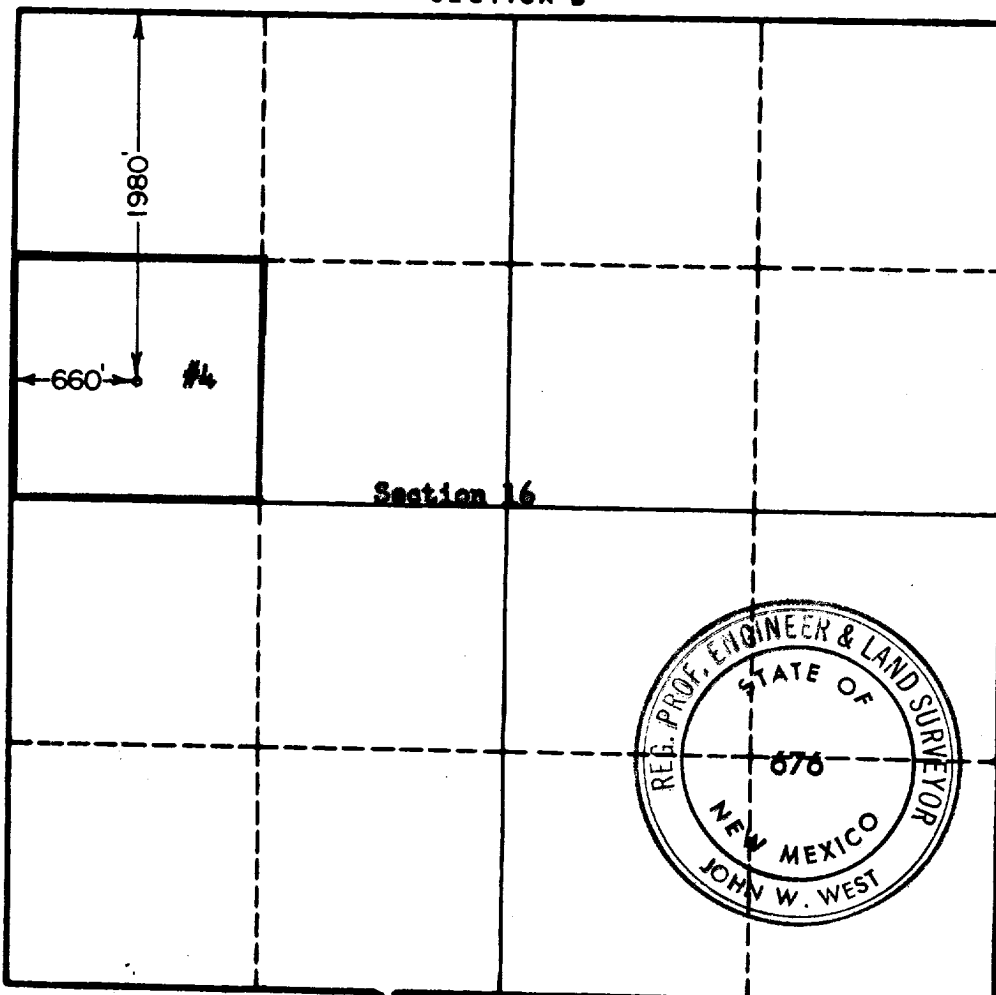
SECTION A

Operator SKELLY OIL COMPANY			Lease HOBBS "Q"		Well No. 4
Unit Letter E	Section 16	Township 24 SOUTH	Range 36 EAST	County LEA	
Actual Footage Location of Well: 1980 feet from the NORTH line and 660 feet from the WEST line					
Ground Level Elev.	Producing Formation Seven Rivers		Pool Jalmat	Dedicated Acreage: 40 Acres	

1. Is the Operator the only owner in the dedicated acreage outlined on the plat below? YES ☒ NO ☐ ("Owner" means the person who has the right to drill into and to produce from any pool and to appropriate the production either for himself or for himself and another. (65-3-29 (a) NMSA 1955 Comp.)
2. If the answer to question one is "no," have the interests of all the owners been consolidated by communitization agreement or otherwise? YES ☐ NO ☐ If answer is "yes," Type of Consolidation _____
3. If the answer to question two is "no," list all the owners and their respective interests below:

Owner	Land Description

SECTION B



CERTIFICATION

I hereby certify that the information in SECTION A above is true and complete to the best of my knowledge and belief.

Name **(ORIGINAL) H. E. Aub**
Position **Dist. Supt.**
Company **Skelly Oil Company**
Date **January 7, 1965**

I hereby certify that the well location shown on the plat in SECTION B was plotted from field notes of actual surveys made by me or under my supervision, and that the same is true and correct to the best of my knowledge and belief.

Date Surveyed **12-31-64**
Registered Professional Engineer and/or Land Surveyor, **JOHN W. WEST**
John W. West
Certificate No. **N. M. - P. E. & L. S. NO. 676**

0 330 660 990 1320 1650 1980 2310 2640 2000 1600 1200 800

COUNTY		LEA		FIELD Undesignated		STATE NM	
OPR		SKELLY OIL COMPANY				MAP	
		4 Hobbs "Q"					
		Sec. 16, T-24-S, R-36-E				CO-ORD	
		1980' fr N Line & 660' fr W Line of Sec.					
		Spud 1-8-65		CLASS		EL <u>3386</u>	
		Comp 2-19-65					
		FORMATION		DATUM		FORMATION	
		DATUM					
CSG & SX - TUBING		LOG:					
		Anhy 1670					
8 5/8" 370' 250		B/Salt					
5 1/2" 3800' 200		3400					
		Yates 3491					
		7-R 3763					
LOGS EL GR RA IND HC A							
		TD 3800', PED 3755'					

IF Seven Rivers Perfs 3743-50' Pmpd 8 BOPD + 124 BW. Pot.
Based on 24 hr test, gravity 29.4, GOR 5500.

Distribution limited and publication prohibited by subscribers' agreement.
Reproduction rights reserved by Williams & Lee Scouting Service, Inc.

CONT. Hende Drlg. Co.		PROP DEPTH 3800'		TYPE	
DATE					

F.R. 1-14-65; Oper's Elev. 3386' DF
PD 3800' - Seven Rivers
1-16-65 TD 3800', prep to perf.
1-23-65 TD 3800', PED 3755', RU Pump
Perf 3743-52', 3757-60', 3762-72' W/2 SPF
Ac. 250 gals.
Swbd 62 B Sul Wtr, w/show gas in 5 hrs.
Squeezed perfs 3743-72' W/75 sx.
Drid out to 3755'
Re-Perf 3743-50' W/2 SPF
Re-Ac. 250 gals.
Swbd 12 BL&AW, 9 BFW + 3 BNO w/fair show gas
in 4 hrs.
Re-Ac. 250 gals.
Frac 10,000 gals oil + 10,000# sd. 3743-50'.
Swbd 29 BLO + 57 BFW in 12 hrs.

LEA COUNTY Undesignated
SKELLY OIL COMPANY

N.M. Sec. 16-24S-36E
#4 Hobbs "Q" Page #2

1-30-65	TD 3800', PBD 3755', ppg. load. Pmpd. 18 BLO + 125 BFW/24 hrs.
2-6-65	TD 3800', PBD 3755', ppg. load. Pmpd. 11 BLO + 104 BFW/20 hrs.
2-13-65	TD 3800', PBD 3755', ppg. load. Pmpd. 8 BLO + 123 BFW/24 hrs.
2-17-65	TD 3800', PBD 3755', ppg. load. Pmpd. 8 BLO + 120 BFW/24 hrs.
3-1-65	TD 3800', PBD 3755', COMPLETED.