

NEW MEXICO OIL CONSERVATION COMMISSION
WELL LOCATION AND ACREAGE DEDICATION PLAT

Form O-102
Supersedes O-128
Effective 1-1-65

All distances must be from the outer boundaries of the Section.

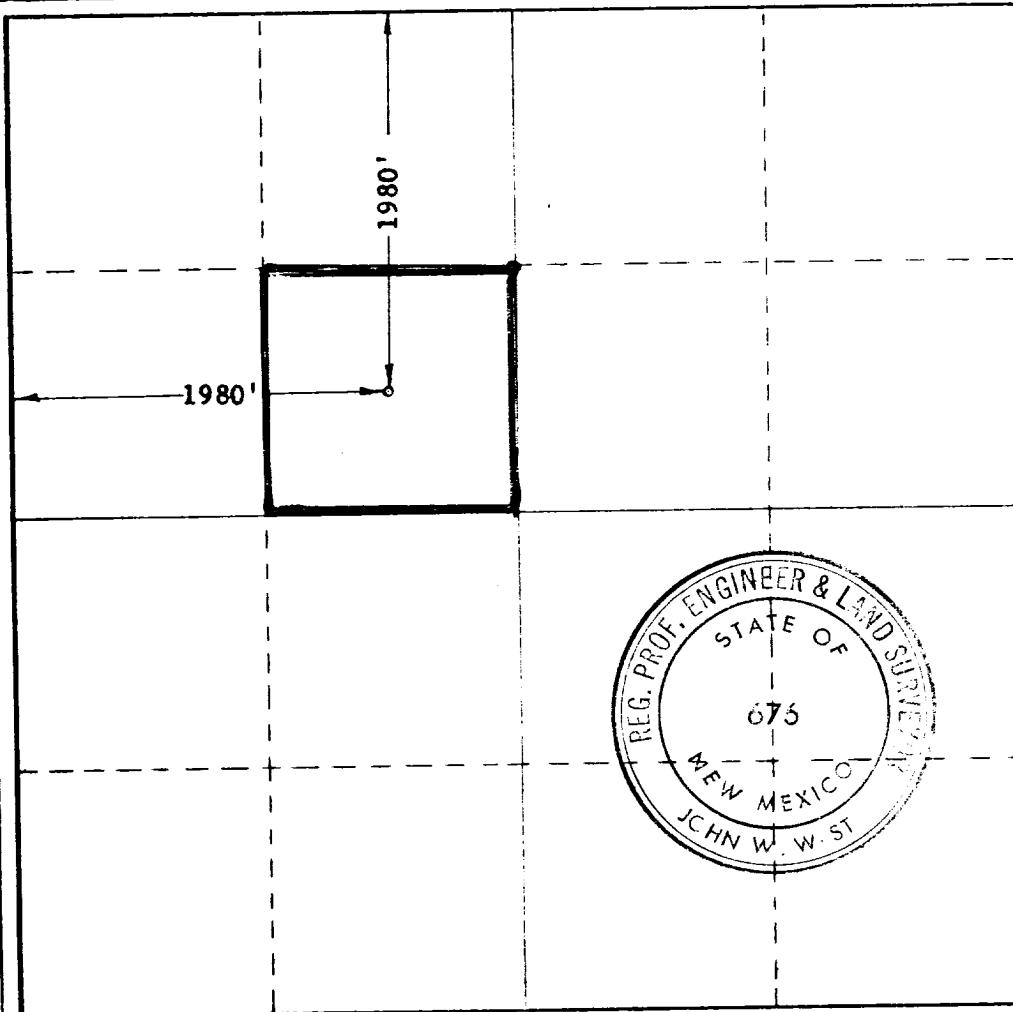
Operator CONTINENTAL OIL CO.		Lease LYNN B 1		Well No. 14
Unit Letter F	Section 26	Township 23 SOUTH	Range 36 EAST	County LEA
Actual Footage Location of Well:				
1980 feet from the NORTH line and		1980 feet from the WEST line		
Ground Level Elev. 3350 Est	Producing Formation Queen	Pool Langlie Mattix	Dedicated Acreage 40- Acres	

1. Outline the acreage dedicated to the subject well by colored pencil or hachure marks on the plat below.
2. If more than one lease is dedicated to the well, outline each and identify the ownership thereof (both as to working interest and royalty).
3. If more than one lease of different ownership is dedicated to the well, have the interests of all owners been consolidated by communitization, unitization, force-pooling, etc?

☒ Yes ☐ No If answer is "yes," type of consolidation **NMFU**

If answer is "no," list the owners and tract descriptions which have actually been consolidated. (Use reverse side of this form if necessary.)

No allowable will be assigned to the well until all interests have been consolidated (by communitization, unitization, forced-pooling, or otherwise) or until a non-standard unit, eliminating such interests, has been approved by the Commission.



CERTIFICATION

I hereby certify that the information contained herein is true and complete to the best of my knowledge and belief.

Name
SIGNED: HAL R. STEPHENS
Position
Staff Supervisor
Company
Continental Oil Co.
Date
September 16, 1965
USOS-5 NMOCC -2 File

I hereby certify that the well location shown on this plat was plotted from field notes of actual surveys made by me or under my supervision, and that the same is true and correct to the best of my knowledge and belief.

Date Surveyed
9-13-65

Registered Professional Engineer and/or Land Surveyor

John W West
Certificate No.
N.M. P.E. & L.S. No 676

0 330 660 990 1320 1650 1980 2310 2640 2970 3300 3630 3960 4290 4620 4950 5280 5610 5940 6270 6600