

NEW MEXICO OIL CONSERVATION COMMISSION
WELL LOCATION AND ACREAGE DEDICATION PLAT

Form C-102
Supersedes C-128
Effective 1-1-65

All distances must be from the outer boundaries of the Section.

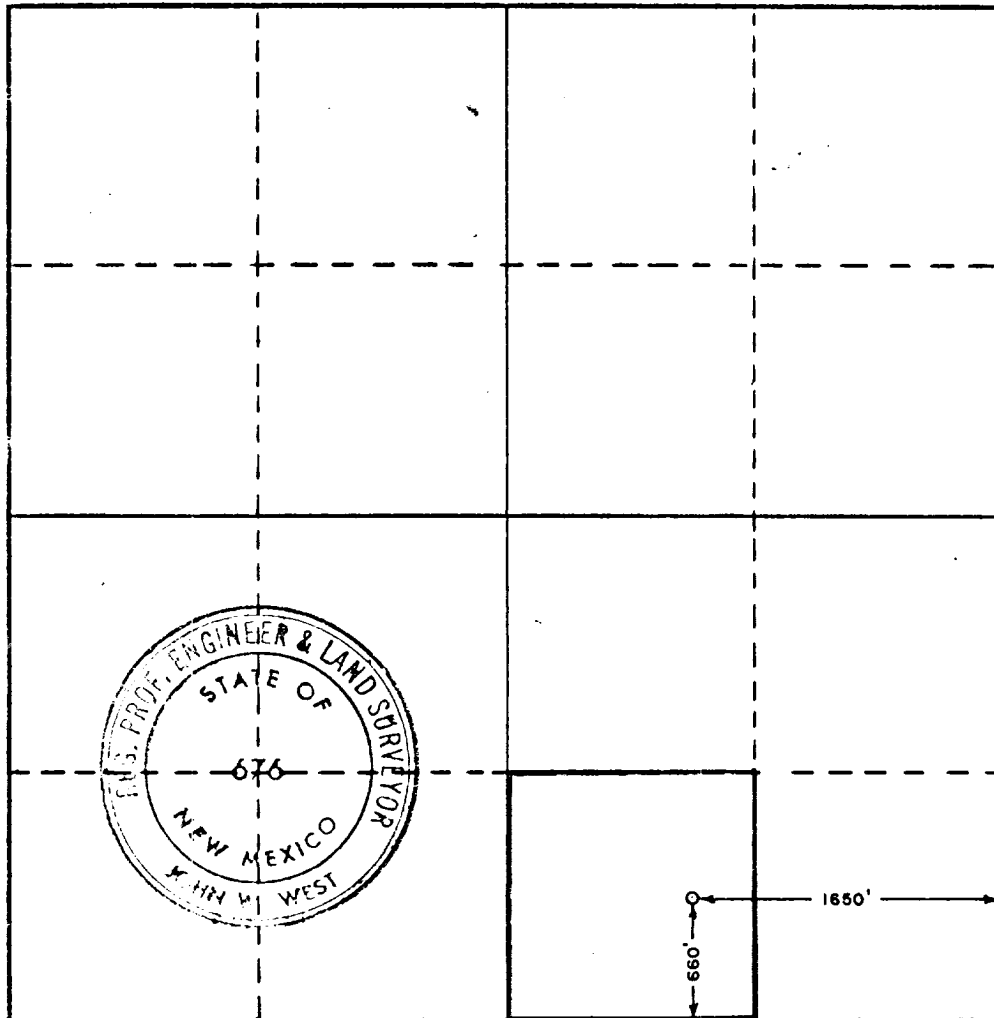
Operator CONTINENTAL OIL COMPANY			Lease STEVENS "B"			Well No. 19		
Unit Letter O	Section 7	Township 23 SOUTH		Range 37 EAST	County LEA			
Actual Footage Location of Well: 660 feet from the SOUTH line and 1650 feet from the EAST line								
Ground Level Elev.		Producing Formation Queen		Pool Langlie Mattix Pool		Dedicated Acreage: 40 Acres		

1. Outline the acreage dedicated to the subject well by colored pencil or hachure marks on the plat below.
2. If more than one lease is dedicated to the well, outline each and identify the ownership thereof (both as to working interest and royalty).
3. If more than one lease of different ownership is dedicated to the well, have the interests of all owners been consolidated by communitization, unitization, force-pooling, etc?

☐ Yes ☐ No If answer is "yes," type of consolidation _____

If answer is "no," list the owners and tract descriptions which have actually been consolidated. (Use reverse side of this form if necessary.) _____

No allowable will be assigned to the well until all interests have been consolidated (by communitization, unitization, forced-pooling, or otherwise) or until a non-standard unit, eliminating such interests, has been approved by the Commission.



CERTIFICATION

I hereby certify that the information contained herein is true and complete to the best of my knowledge and belief.

Name *James H. Hart*
Position
Supervising Engineer
Company
Continental Oil Co.

Date
6-30-67

I hereby certify that the well location shown on this plat was plotted from field notes of actual surveys made by me or under my supervision, and that the same is true and correct to the best of my knowledge and belief.

JUNE 22, 1967

Date Surveyed

Registered Professional Engineer and/or Land Surveyor

John W. West
Certificate No. **676**



COUNTY	LEA	FIELD	Langlie-Mattix	STATE	NM
OPR	CONTINENTAL OIL CO.				MAP
	19 Stevens "B"				
	Sec. 7, T-23-S, R-37-E				CO-ORD
	660' FSL, 1650' FEL of Sec.				30-025-22180
	Spd 7-11-67				
	Cmp 8-3-67				EL- [REDACTED]
	CLASS		EL-		
CSG & SX - TUBING	FORMATION	DATUM	FORMATION	DATUM	
7 5/8" 355' 150					
4 1/2" 3800' 200					
LOGS EL GR RA IND HC A					
	TD 3800', PED 3792'				
IP Penrose Perfs 3627-3734' Flwd 240 EOPD + 2 EW. Pot. Based on 24 hr test thru 16/64" chh., TP 580#, CF 950#.					

Distribution limited and publication prohibited by subscribers' agreement.
Reproduction rights reserved by Williams & Lee Scouting Service, Inc.

CONT. B&L Drlg. Co. PROP DEPTH 3760' TYPE RT

7-17-67 F.R. 7-6-67; Opr's Elev. 3311' DF
PD 3760' - Queen
Contr. - B&L Drlg. Co.
Drlg. 3410' 1m.

7-24-67 TD 3800', PED 3792', swdg load.
Perf @ 3752' & 3758' W/1 SPH
Acid (3752-58') 50' gals.
Swbd 12 ELO in 4 hrs & swbd dry (3752-58')
Frac (3752-58') 5000 gals 1st oil + 5000# sd.
Swbd 47 ELO + 26 EW in 6 hrs.

7-31-67 TD 3800', PED 3792', flwg load.
Swbd 11 ELO + 27 8 ES&W in 11 hrs &
Swbd dry (3752-58') (-12.6 ELO)
Squad perfs 3752-58' W/3" ex.

7-31-67 Cont.
Perf @ 3627', 3647', 3657', 3668', 3693',
3710', 3714', 3726', 3734' W/1 SPI
Acid (3627-3734') 1000 gals.
Frac (3627-3734') 40,000 gals 1se oil +
60,000# sd.
Flwd 272 BLO in 24 hrs thru 16/64" chk.,
(-784 BLO)

8-7-67 TD 3800', PBD 3792', WO Pot.
Flwd 240 BO + 2 BW in 24 hrs thru 16/64" chk.,
TP 580#, CP 950# (3627-3734')

8-14-67 TD 3800', PBD 3792', COMPLETE
LOG: Anhydrite 1203', Yates 2917', Seven
Rivers 3062', Queen 3482', Penrose 3622'.

COUNTY	LEA	FIELD	Langlie-Mattix	STATE	NM
OPR	CONTINENTAL OIL CO.				MAP
	19 Stevens "B"				
	Sec. 7, T-23-S, R-37-E				CO-ORD
	660' ZSL, 1650' FEL of Sec.				30-025-22180

	CLASS		EL	
	FORMATION	DATUM	FORMATION	DATUM
CSG & SX - TUBING				
LOGS EL GR RA IND HC A				

Distribution limited and publication prohibited by subscribers' agreement.
Reproduction rights reserved by Williams & Lee Scouting Service, Inc.

CONT.	PROP DEPTH	3760'	TYPE
DATE			

F.R. 7-6-67
PD 3760' - Queen