

NEW MEXICO OIL CONSERVATION COMMISSION  
WELL LOCATION AND ACREAGE DEDICATION PLAT

Form C-102  
Supersedes C-128  
Effective 1-1-65

All distances must be from the outer boundaries of the Section: 8.  
HOBBBS OFFICE D. C. G.

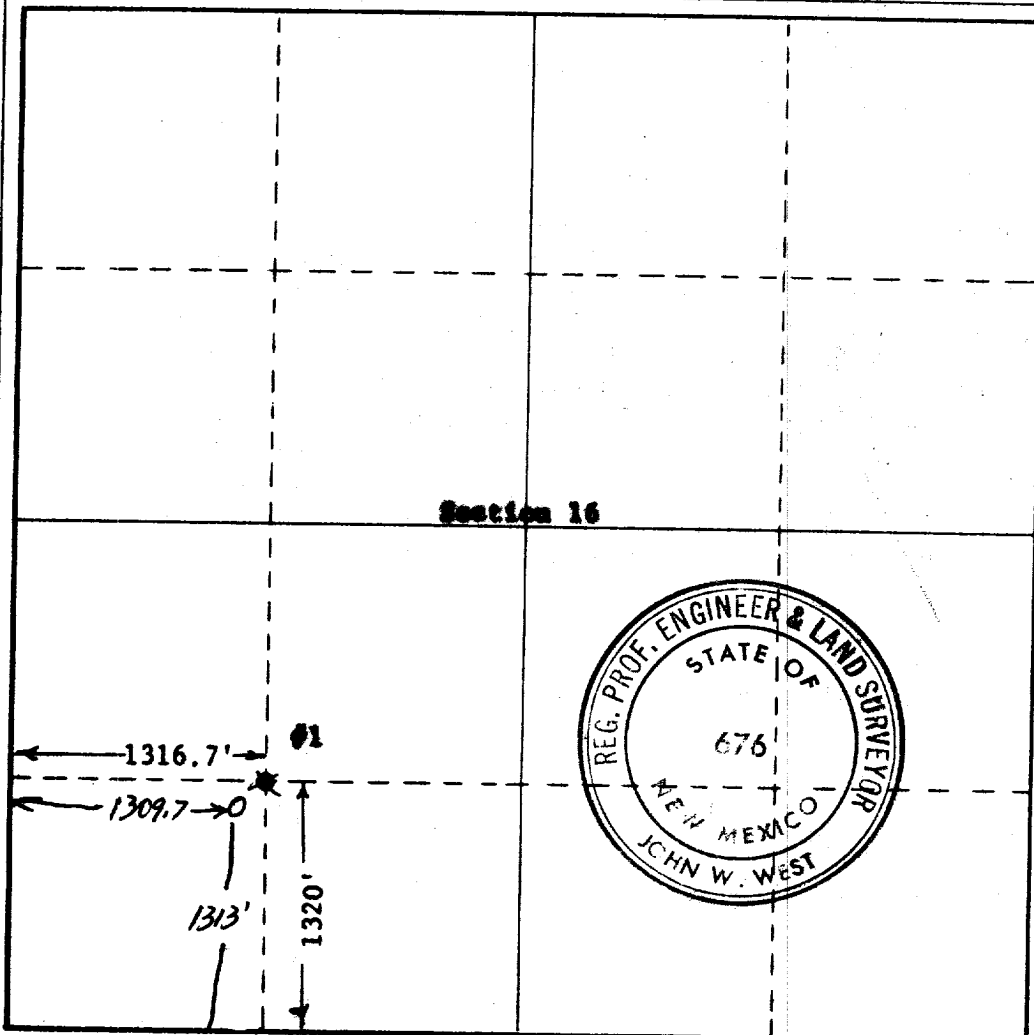
Operator <b>SKELLY OIL COMPANY</b>			Lease <b>JAL WATER SYSTEM, PLANTER SUPPLY</b>		Well No. <b>1</b>
Unit Letter <b>K, L, M, N</b>	Section <b>16</b>	Township <b>24 SOUTH</b>	Range <b>36 EAST</b>	County <b>LEA</b>	
Actual Footage Location of Well: <b>1316.7</b> feet from the <b>SOUTH</b> line and <b>1309.7</b> feet from the <b>WEST</b> line					
Ground Level Elev. <b>Unknown</b>	Producing Formation <b>Capitan Reef</b>	Pool <b>--</b>		Dedicated Acreage: <b>--</b> Acres	

1. Outline the acreage dedicated to the subject well by colored pencil or hatchure marks on the plat below.
2. If more than one lease is dedicated to the well, outline each and identify the ownership thereof (both as to working interest and royalty).
3. If more than one lease of different ownership is dedicated to the well, have the interests of all owners been consolidated by communitization, unitization, force-pooling, etc?

☐ Yes ☐ No If answer is "yes," type of consolidation \_\_\_\_\_

If answer is "no," list the owners and tract descriptions which have actually been consolidated. (Use reverse side of this form if necessary.) \_\_\_\_\_

No allowable will be assigned to the well until all interests have been consolidated (by communitization, unitization, forced-pooling, or otherwise) or until a non-standard unit, eliminating such interests, has been approved by the Commission.



CERTIFICATION

I hereby certify that the information contained herein is true and complete to the best of my knowledge and belief.

Name (ORIGINAL SIGNED) **V. E. Fletcher**

Position **District Superintendent**

Company **Skelly Oil Company**

Date **August 4, 1967**

I hereby certify that the well location shown on this plat was plotted from field notes of actual surveys made by me or under my supervision, and that the same is true and correct to the best of my knowledge and belief.

Date Surveyed **JUNE 13, 1967**

Registered Professional Engineer and/or Land Surveyor

*John W. West*  
Certificate No. **676**

COUNTY LEA FIELD Undesignated STATE NM

OPR <u>SKELLY OIL CO.</u>		MAP				
<u>WS-1 Jal Water System</u>						
<u>Sec. 16, T-24-S, R-36-E</u>		CO-ORD				
<u>1320' FSL, 1316' FWL of Sec.</u>		<u>30-025-22213</u>				
<u>Spd 8-11-67</u>		CLASS				
<u>Comp 9-23-67</u>		EL				
CSG & SX - TUBING	FORMATION	DATUM	FORMATION	DATUM		
LOGS	EL	GR	RA	IND	HC	A
TD 4500'						
Capitan Reef OH 3951-4500' - WATER SUPPLY WELL						

Distribution limited and publication prohibited by subscribers' agreement.  
Reproduction rights reserved by Williams & Lee Scouting Service, Inc.

CONT. Leatherwood Drlg. Co. PROP DEPTH 4500' TYPE 32  
DATE

F.R. 8-10-67; WATER SUPPLY WELL  
PD 4500' - Capitan Reef  
Contr. - Leatherwood  
8-11-67 RURT  
8-21-67 TD 3966', rng 9 5/8" casing.  
8-25-67 TD 4222', prep drill.  
Lost circ @ 4206', 4220' & 4222'  
9-1-67 TD 4500', WC Elec.  
9-8-67 TD 4500', laying supply line.  
9-16-67 TD 4500', prep test.  
9-23-67 TD 4500', COMPLETE  
Complete Natural Open Hole 3951-4500'