

NEW MEXICO OIL CONSERVATION COMMISSION
WELL LOCATION AND ACREAGE DEDICATION PLAT

Form C-102
Supersedes C-128
Effective 1-1-65

All distances must be from the outer boundaries of the Section.

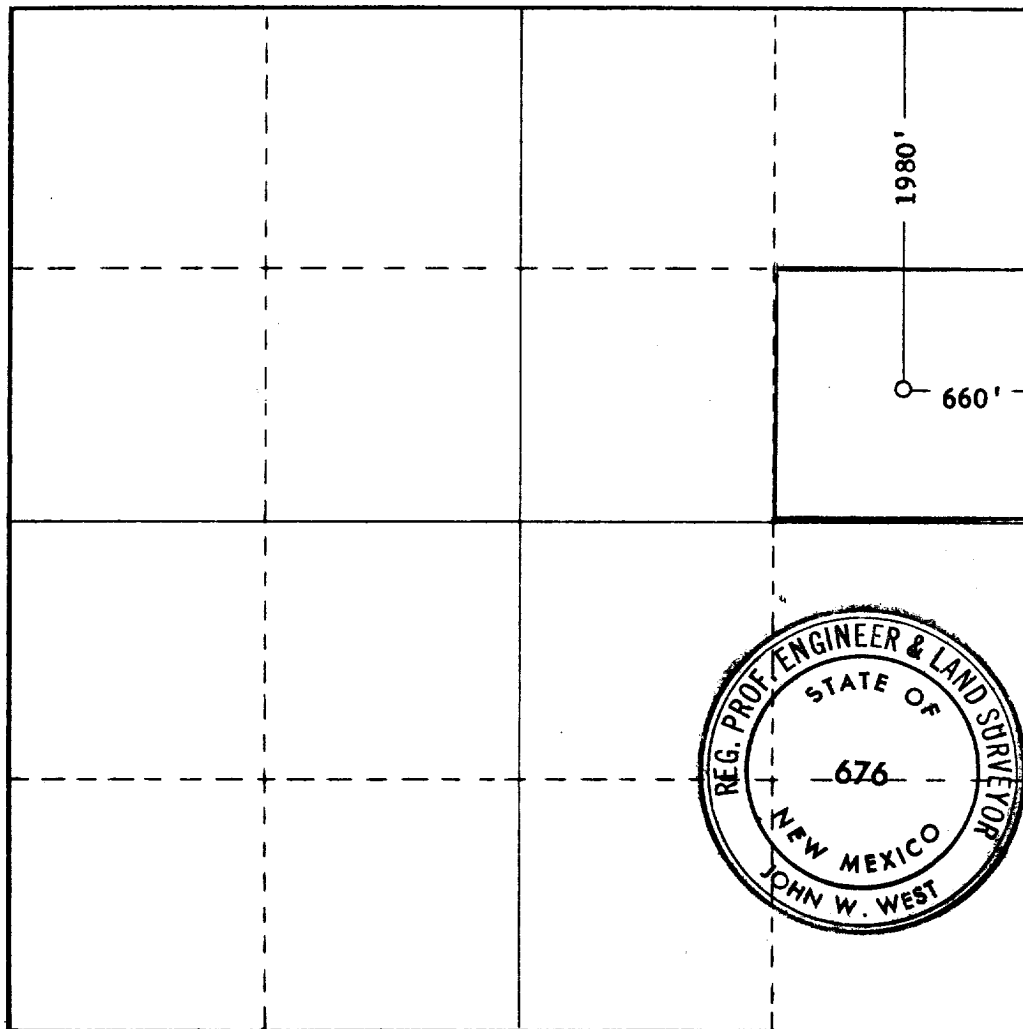
Operator AMERADA PETROLEUM CORP.			Lease FED. H Federal		Well No. 1
Unit Letter H	Section 18	Township 23 SOUTH	Range 37 EAST	County LEA	
Actual Footage Location of Well: 1980 feet from the NORTH line and 660 feet from the EAST line					
Ground Level Elev.	Producing Formation Langlie Mattix	Pool Langlie Mattix	Dedicated Acreage: 40 Acres		

1. Outline the acreage dedicated to the subject well by colored pencil or hachure marks on the plat below.
2. If more than one lease is dedicated to the well, outline each and identify the ownership thereof (both as to working interest and royalty).
3. If more than one lease of different ownership is dedicated to the well, have the interests of all owners been consolidated by communitization, unitization, force-pooling, etc?

☐ Yes ☐ No If answer is "yes," type of consolidation _____

If answer is "no," list the owners and tract descriptions which have actually been consolidated. (Use reverse side of this form if necessary.) _____

No allowable will be assigned to the well until all interests have been consolidated (by communitization, unitization, forced-pooling, or otherwise) or until a non-standard unit, eliminating such interests, has been approved by the Commission.



CERTIFICATION

I hereby certify that the information contained herein is true and complete to the best of my knowledge and belief.

Name
B. J. Ling
Position
District Superintendent
Company
Amerada Petroleum Corp.
Date
8-22-67

I hereby certify that the well location shown on this plat was plotted from field notes of actual surveys made by me or under my supervision, and that the same is true and correct to the best of my knowledge and belief.

Date Surveyed
AUGUST 21, 1967

Registered Professional Engineer and/or Land Surveyor

John W. West
Certificate No. **676**

0 330 660 990 1320 1650 1980 2310 2640 2970 3300 3630 3960 4290 4620 4950 5280 5610 5940 6270 6600

COUNTY	LEA	FIELD	Langlie-Mattix	STATE	NM
OPR	AMERADA PETROLEUM CORP.				MAP
	1 Federal "H"				
	Sec. 18, T-23-S, R-37-E				
	1980' FNL, 660' FEL of Sec.				CO-ORD
	Spd 8-30-67				30-025-22234
	Cmp 9-13-67				
	CLASS		EL		
CSG & SX - TUBING	FORMATION	DATUM	FORMATION	DATUM	
9 5/8" 331' 250					
5 1/2" 3774' 300					
LOGS EL GR RA IND HC A					
	TD 3775', PBD 3769'				
IP Penrose Perfs 3590-3735' Pmpd 27 BOFD + 69 BLW. Pot. Based on 24 hr test, gravity 35., GOR 1166.					

Distribution limited and publication prohibited by subscribers' agreement.
Reproduction rights reserved by Williams & Lee Scouting Service, Inc.

CONT. B&L Drlg. Co.	PROP DEPTH 3800'	IND. R.
DATE		

F.R. 8-31-67; Opr's Elev. 3337' DF
 PD 3800' - Queen
 Contr. - B&L Drlg. Co.
 9-11-67 TD 3775', SI.
 9-18-67 TD 3775', PBD 3769', prep test.
 Perf @ 3590', 3603', 3606', 3611', 3628',
 3631', 3637', 3640', 3671', 3676', 3689',
 3692', 3695', 3699', 3716', 3735' W/1 SPI
 Acid (3590-3735') 250 gals.
 Frac (3590-3735') 29,000 gals gelled wtr +
 29,000# sd.
 Flwd 1 BO in 18 hrs thru 16/64" chk., TP 18#,
 Gas Volume 17,968 CFGPD (3590-3735')

9-25-67 TD 3775', PBD 3769', TOP
 Pmpd 21 BO w/tr. wtr in 24 hrs, GOR 2012,
 Gravity 37.9.
10-2-67 TD 3775', PBD 3769', WO Pot.
10-16-67 TD 3775', PBD 3769', COMPLETE
 LOG: Rustler 1161', Yates 2704, Queen
 3440', Penrose 3580'.