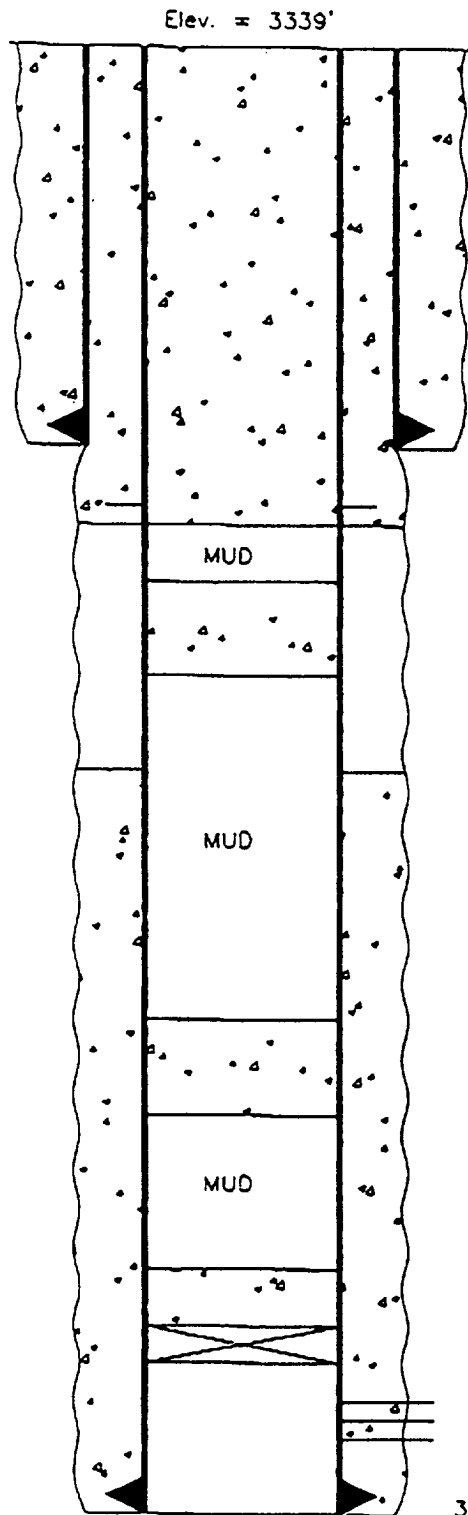


PROPOSED PLUG AND ABANDONMENT
10/31/96



336' - 7 5/8" Casing. Cemented w/150 sxs. Circulated to Surface
PERFORATE @ 400' AND CIRCULATE 75 SXS CEMENT TO SURFACE

SPOT 25 SXS 1300'-975'

T.O.C. @ 2300' (Temp. Survey)

SPOT 25 SXS 3110'-2735'

SPOT 10 SXS CEMENT ON TOP OF R.B.P. @ 3542'

R.B.P. @ 3542'

Perfs 3621'-3717'

3752' - 4 1/2", 9.5#, Casing. Cemented w/200 sxs

T.D. @ 3757'

CONOCO, INC.
Stevens B #20
660' FNL & 1650' FEL
Sec. 18, T-23S, R-37E
Lea County, NM